

800 自动运模车

AUTOMATIC MOLD SEWING MACHINE

零件手册

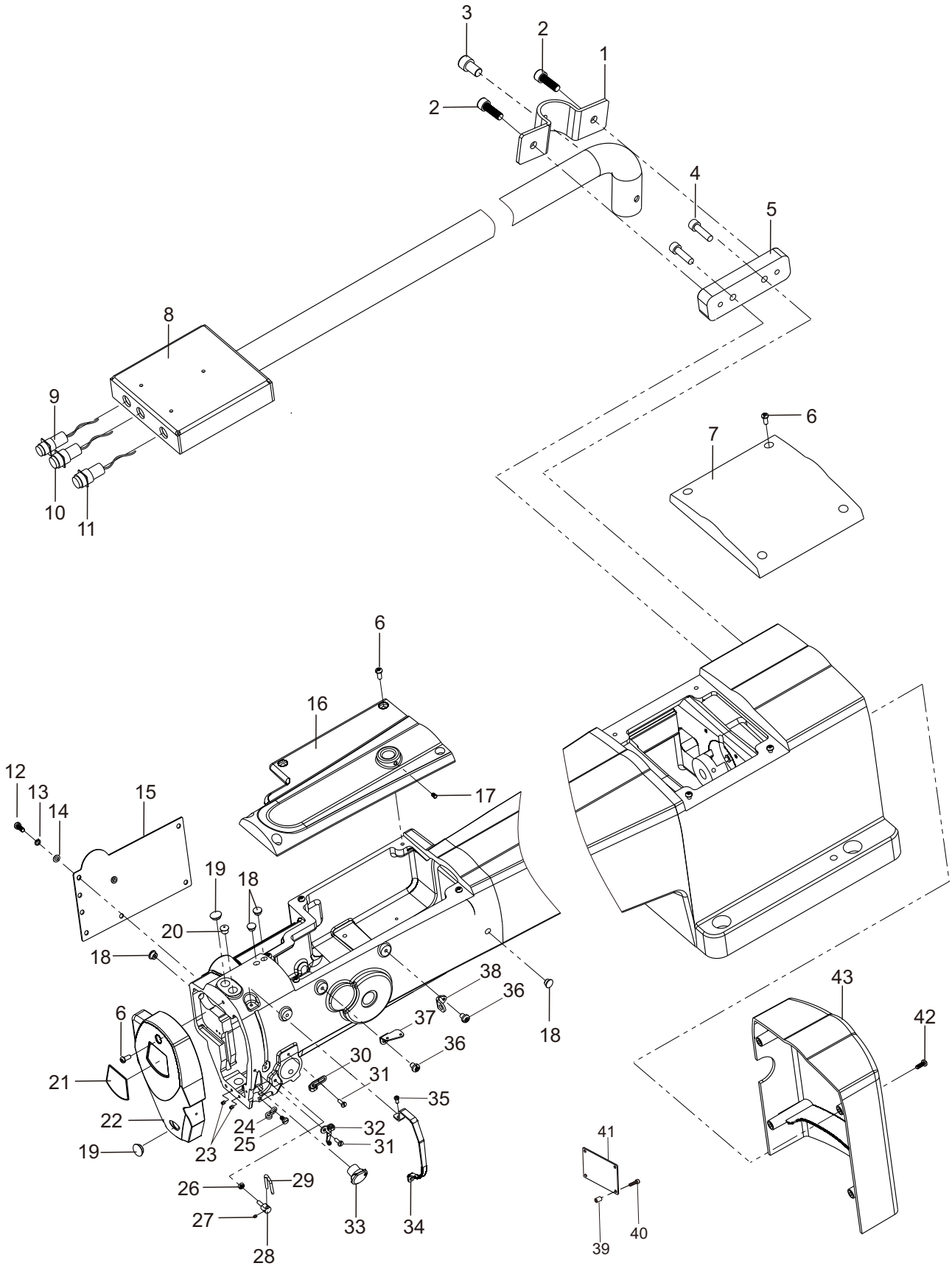
**PARTS BOOK**

# 目 录

## CONTENTS

1. 机头、外装部件.....	1
FRAME & MISCELLANEOUS COVER COMPONENTS	
2. 上轴、针杆部件.....	3
MAIN SHAFT & NEEDLE BAR COMPONENTS	
3. 中压脚部件.....	5
PRESSER MECHANISM & PRESSER VARIABLE COMPONENTS (1)	
4. 辅助压脚部件.....	7
AUXILIARY PRESSER MECHANISM & MARKER PEN COMPONENTS	
5. 松线部件.....	9
TENSION RELEASE & THREAD TENSION COMPONENTS	
6. 下轴剪线部件.....	11
LOWER SHAFT TRIM THREAD COMPONENTS	
7. 润滑部件.....	14
LUBRICATION COMPONENTS	
8. X-Y送料部件(1).....	16
FEEDING COMPONENTS(1)	
9. X-Y送料部件(2).....	18
FEEDING COMPONENTS(2)	
10. X-Y送料部件(3).....	20
FEEDING COMPONENTS(3)	
11. 气动部件.....	22
PNEUMATIC COMPONENTS	
12. 大缝台部件.....	24
BIG SEWING BED COMPONENTS	
13. 机架部件.....	26
MACHINE STAND COMPONENTS	
14. 附件部件.....	28
ACCESSORIES COMPONENTS	

# 1. 机头、外装部件

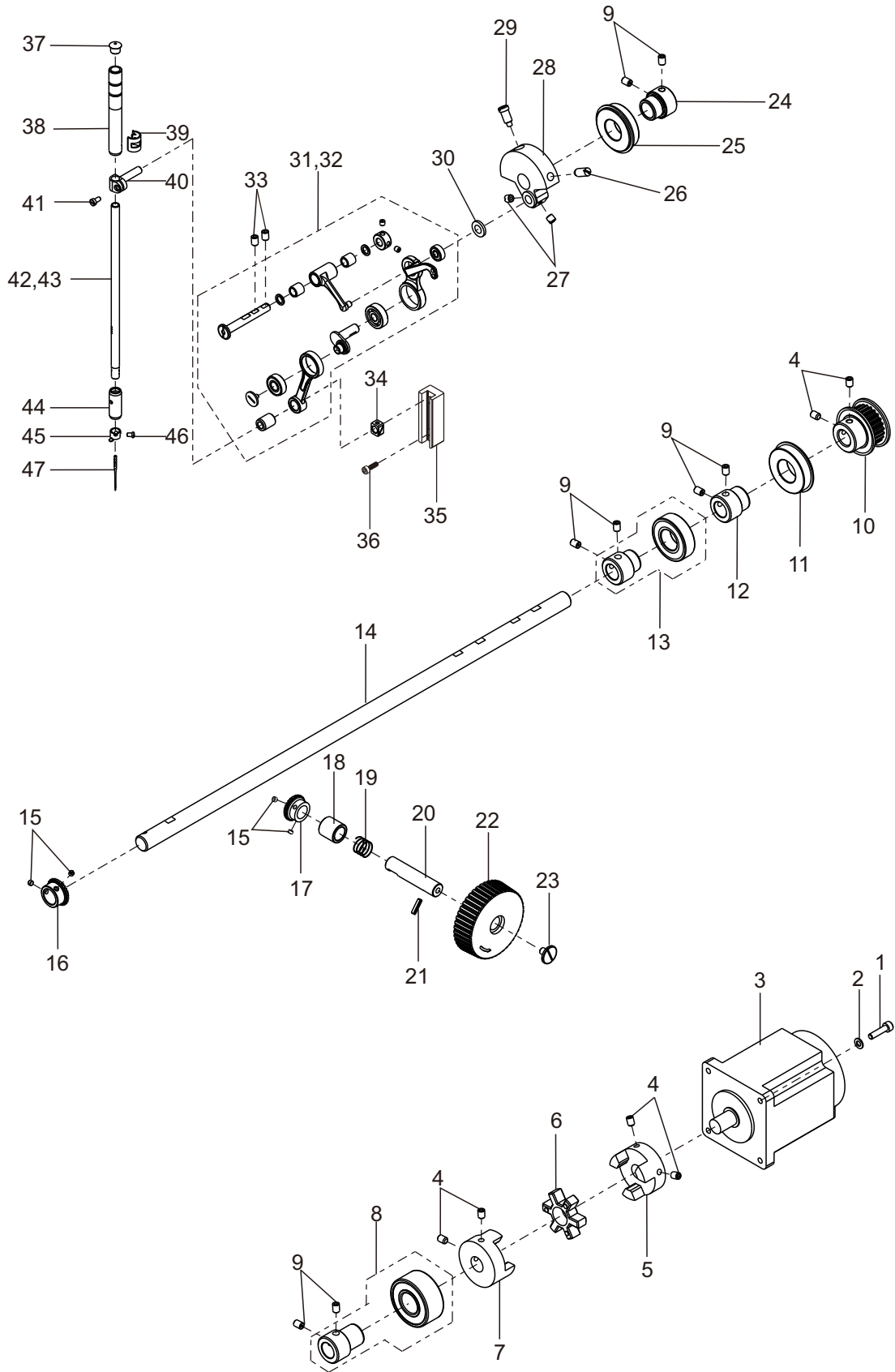


## 机头、外装部件

## FRAME &amp; MISCELLANEOUS COVER COMPONENTS

序号 NO.	件号 Part No.	名称	DESCRIPTION	数量 Qty
1	20019687	固定座夹	CALMP	1
2	10003093	螺钉 M8 L=20	SCREW M8 L=20	2
3	10002232	螺钉 M8 L=14	SCREW M8 L=14	1
4	10003142	螺钉 M8 L=25	SCREW M8 L=25	2
5	20019686	固定座	FIXED BASE	1
6	10008776	螺钉 M5 L=12	SCREW M5 L=12	11
7	20020206	800机壳上后盖喷漆件	TOP COVER REAR	1
8	20020444	操作盒安装座组件	MOUNTING BASE	1
9	10039125	压框开关-黄色	PRESS FOOT FRAME SWITCH (YELLOW)	1
10	10037725	启动开关 (绿色)	STARTING SWITCH (GREEN)	1
11	10028708	急停开关	STOP SWITCH (RED)	1
12	10005350	螺钉 M4 L=8	SCREW M4 L=8	5
13	10009503	4垫圈 (GB/T 859-1987)	WASHER 4	5
14	10002954	4垫圈	WASHER 4	5
15	20013334	运模车后盖板	LEFTWARD COVER	1
16	20019786	900机壳上前盖喷漆件	TOP COVER FRONT	1
17	10011232	螺钉 M6 L=6	SCREW M6 L=6	1
18	10000090	摆动架销油塞	RUBBER PLUG	4
19	10011099	橡胶塞	RUBBER PLUG	2
20	10010587	橡胶塞	RUBBER PLUG	1
21	10005468	面板装饰牌	FACE PLATE	1
22	20012639	运模机面板	FACE COVER	1
23	10000563	螺钉 M4 L=5	SCREW M4 L=5	2
24	10011139	下线钩	ARM THREAD GUIDE DOWN	1
25	10010668	螺钉 SM11/64"×40	SCREW SM11/64"×40	1
26	10009471	螺母 M4	NUT M4	1
27	10051477	线钩座螺钉 M3.5 L=3	SCREW M3.5 L=3	1
28	10049613	线钩座	ARM THREAD GUIDE FIXED BASE	1
29	10049614	线钩	ARM THREAD GUIDE	1
30	10008940	右线钩	ARM THREAD GUIDE RIGHT	1
31	10009691	螺钉 SM9/64"×40 L=10	SCREW SM9/64"×40 L=10	2
32	10055858	750左线钩	ARM THREAD GUIDE LEFT	1
33	10054891	小电子夹线器组件	ELECTRONIC THREAD CLAMP DEVICE	1
34	20014983	750挑线杆防护罩	THREAD TAKE-UP LEVER COVER	1
35	10011143	螺钉 SM9/64"×40	SCREW SM9/64"×40	2
36	10011158	螺钉 SM15/64"×28	SCREW SM15/64"×28	2
37	10011200	上过线板	ARM THREAD GUIDE UP	1
38	10011145	单眼过线板	SINGLE-HOLE THREAD EYELET GUIDE	1
39	10024992	转接板支柱	SUPPORT PILLAR	4
40	10009103	螺钉 M4×16	SCREW M4 L=16	4
41	10061933	机头转接板	SIGNAL SWITCH BOARD	1
42	10003049	螺钉 M4 L=12	SCREW M4 L=12	4
43	20020205	760机壳后罩喷漆件	BACK COVER	1

## 2. 上轴、针杆部件



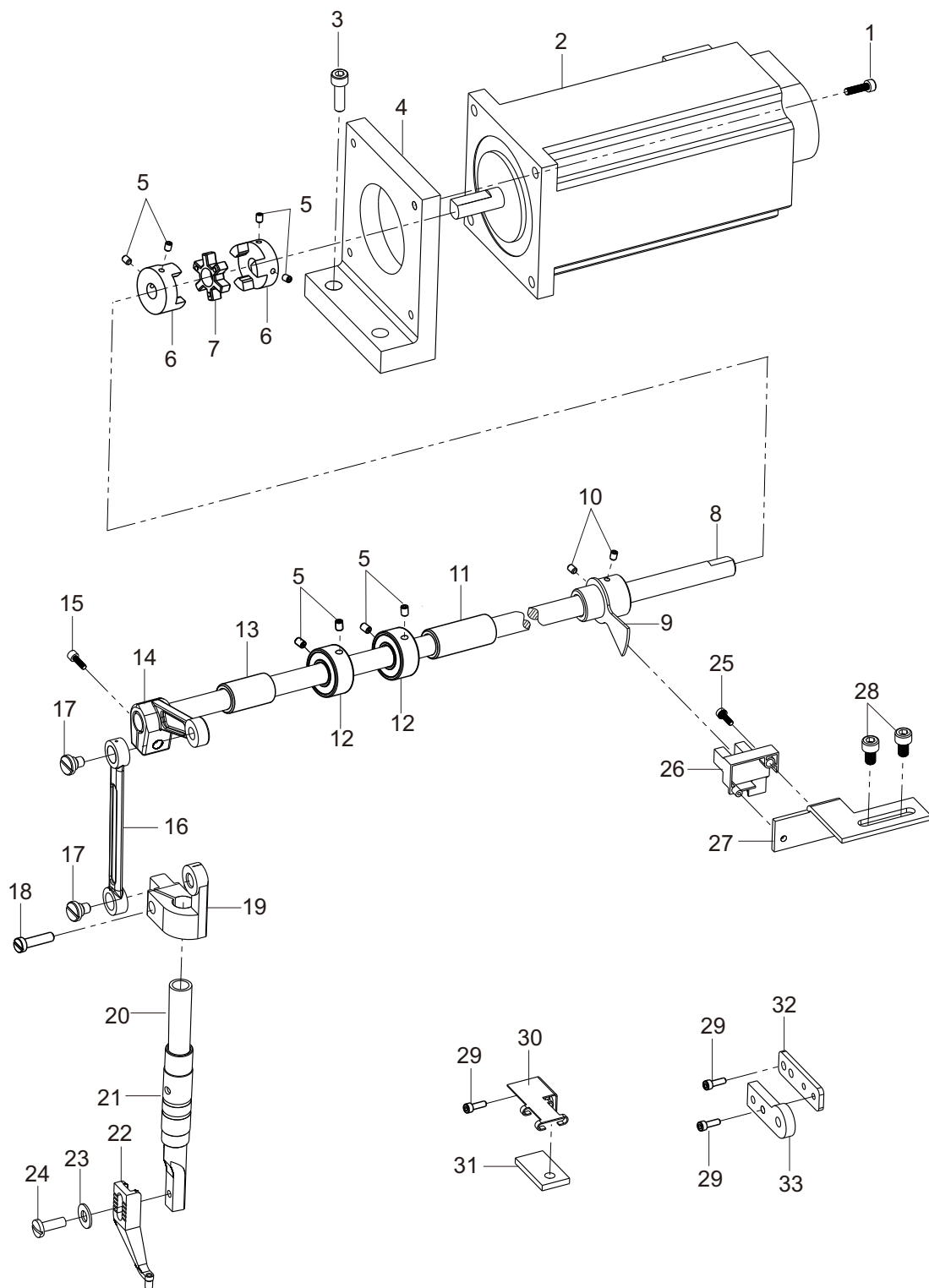
## 上轴、针杆部件

## MAIN SHAFT &amp; NEEDLE BAR COMPONENTS

序号 NO.	件号 Part No.	名称	DESCRIPTION	数量 Qty
1	10001943	螺钉 M5 L=20	SCREW M5 L=20	4
2	10000260	垫圈5.2×9.8×1	WASHER 5.2×9.8×1	4
3	10051272	主轴电机	MAIN SHAFT SERVO MOTOR	1
4	10009187	螺钉 M6 L=8	SCREW M6 L=8	6
5	10012615	联轴器(1)	COUPLING (1)	1
6	10011227	联轴器橡胶块	COUPLING RUBBER	1
7	10012613	联轴器(2)	COUPLING (2)	1
8	10051566	上轴同步齿形带轮组件	UPPER SHAFT TENSION PULLEY ASM	1
9	10029408	轴承 6022VVNR	BEARING 6022VVNR	1
10	10010678	螺钉 SM15/64"×28 L=8	SCREW SM15/64"×28 L=8	6
11	10014362	轴承衬套	BEARING_BUSH	1
12	10050517	轴承 6004ZZ	BEARING 6004ZZ	1
13	10014280	轴承衬套	BEARING_BUSH	1
14	10055051	上轴	MAIN SHAFT	1
15	10027407	齿轮 B	GEAR_B	1
16	10010678	螺钉 SM15/64"×28 L=8	SCREW SM15/64"×28 L=8	4
17	10021312	齿轮 A	GEAR_A	1
18	10027277	轴套	SHAFT SLEEVE	1
19	10011242	弹簧	SPRING	1
20	10027278	手轮轴	HANDWHEEL SHAFT	1
21	10006073	销	SPRING PIN	1
22	10011603	手轮	HANDWHEEL	1
23	10011225	螺钉 M6	HANDWHEEL SETSCREW M6	1
24	10042095	轴承衬套	BEARING_BUSH	1
25	10025882	轴承 6004NR-2RS_BOM	BEARING 6004NR-2RS	1
26	10010082	螺钉 SM9/32"×28 L=16	SCREW SM9/32"×28 L=16	1
27	10005020	螺钉 SM1/4"×40 L=6	SCREW SM1/4"×40 L=6	2
28	10012607	针杆曲柄	COUNTER WEIGHT	1
29	10010545	螺钉 SM9/32"×28 L=15	SCREW SM9/32"×28 L=15	1
30	10011622	垫圈 8×15×0.7	WASHER 8×15×0.7	1
31	10038440	挑线杆组件 <用于-01>	THREAD_TAKE_UP_COMPL	1
32	10049935	双行程挑线杆组件2 <用于-02>	THREAD_TAKE_UP_COMPL	1
33	10009109	螺钉 M4 L=6	SCREW M4 L=6	2
34	10011194	针杆连接轴滑块	SLIDE BLOCK	1
35	10037240	针杆滑块槽	NEEDLE BAR METAL GREASE COVER	1
36	10050541	螺钉 SM3/16"×28 L=12	SCREW SM3/16"×28 L=12	2
37	10010587	橡胶塞	RUBBER PLUG	1
38	10049875	针杆上轴套	NEEDLE_BAR_METAL	1
39	10031678	挡油片	NEEDLE_BAR_METAL_GREASE_COVER	1
40	10038438	针杆连接柱	NEEDLE BAR CONNECTING	1
41	10030286	螺钉	SCREW	1
42	10040641	针杆	NEEDLE BAR	1
43	10040642	针杆	NEEDLE BAR	1
44	10046043	针杆下轴套	NEEDLE_BAR_LOWER_METAL	1
45	10000237	针杆线钩	THREAD GUIDE	1
46	10041770	螺钉 SM1/8"×44 L=4.5	SCREW SM1/8"×44 L=4.5	1
47	10053820	机针 DP×5 10#	NEEDLE DP×5 10#	1
48	10049763	油毡弹簧	SPRING	1
49	10049764	针杆油毡	OIL FELT PAD	1

-01小旋梭 -02大旋梭

### 3. 中压脚部件



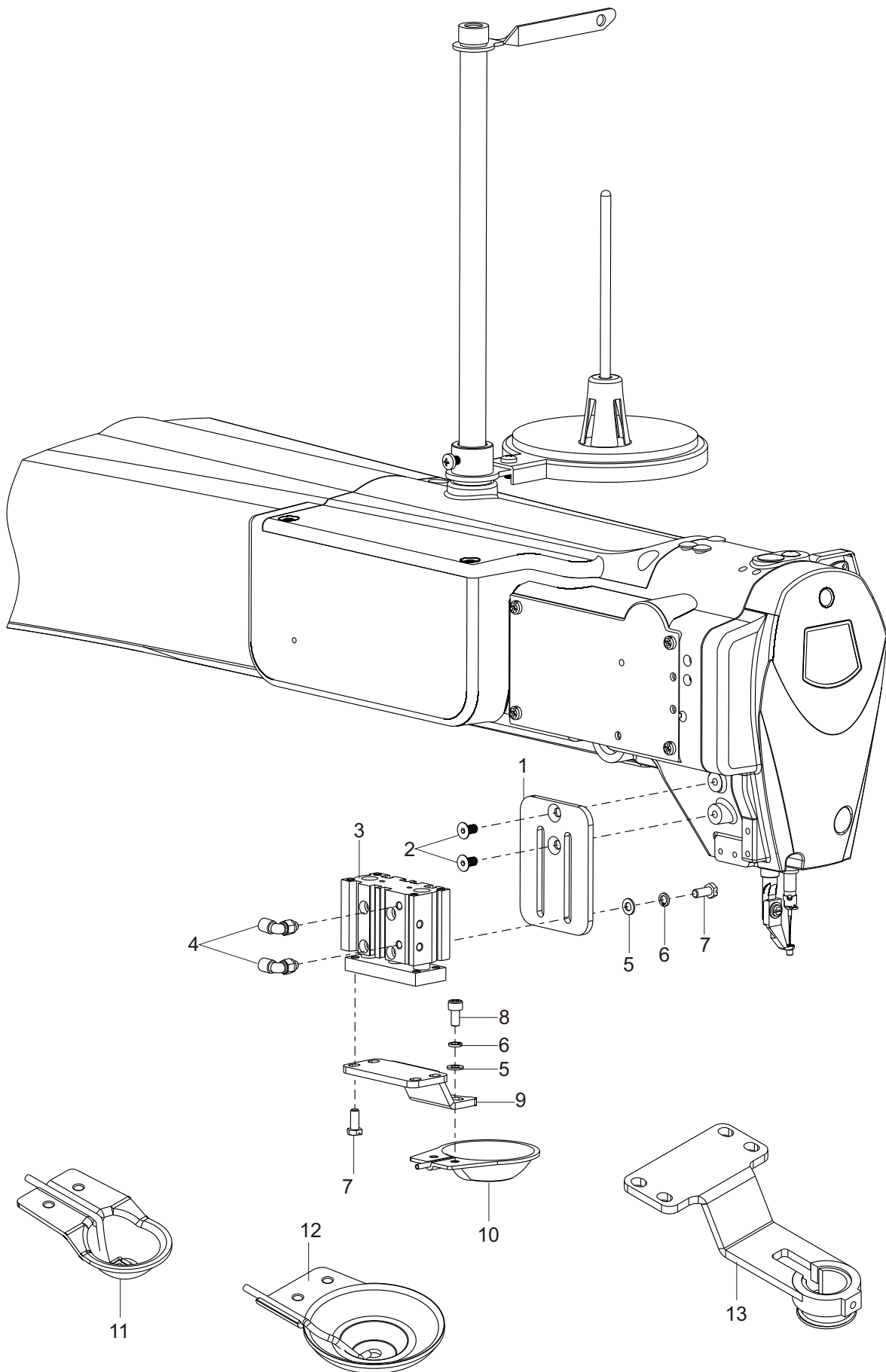
## 中压脚部件

## LOWER SHAFT TRIM THREAD COMPONENTS

序号 NO.	件号 Part No.	名称	DESCRIPTION	数量 Qty
1	10009103	螺钉 M4 L=16	SCREW M4 L=16	4
2	10061929	中压脚步进电机	STEPPING MOTOR	1
3	10002028	螺钉 M6 L=20	SCREW M6 L=20	1
4	10027319	电机座	MOTOR BRACKET	1
5	10012014	螺钉 M5 L=4	SCREW M5 L=4	8
6	10027317	联轴器	COUPLING	2
7	10056286	联轴器橡胶圈	COUPLING RUBBER RING	1
8	10057543	驱动轴	DRIVE SHAFT	1
9	10027334	电机传感片组件	SEVSING PIECE	1
10	10011232	螺钉	SCREW M6 L=6	2
11	10055042	轴套	AXLE SLEEVE	1
12	10027320	挡圈	RETAINING RING	2
13	10048177	轴套	AXLE SLEEVE	1
14	10057545	曲柄	CRANK	1
15	10011410	螺钉 M5 L=10	SCREW M5 L=10	1
16	10057544	连杆	CONNECTING ROD	1
17	10057547	轴位螺钉	AXIAL SCREW	2
18	10000380	螺钉 SM11/64"×40	SCREW SM11/64"×40	1
19	10057541	压杆导架	PRESSURE BAR GUIDE	1
20	10057542	压杆	PRESS ROD	1
21	10057548	压杆下套	PRESS ROD	1
22	10057415	中压脚	MEDIUM PRESSURE FOOT	1
23	10011680	垫圈 4.6×9.7×0.8	WASHER 4.6×9.7×0.8	1
24	10010650	螺钉 SM9/64"×40	SCREW SM9/64"×40	1
25	10000984	螺钉 M3 L=9.5	SCREW M3 L=9.5	1
26	10051271	槽型光耦	GROOVE OPTOCOUPLER	1
27	10057539	传感器安装板	MOUNTING PLATE	1
28	10001239	螺钉组件	SCREW M4 L=8	2
29	10001513	螺钉组件	SCREW M3 L=6	4
30	10058963	油毡安装板	MOUNTING PLATE	1
31	10058965	油毡	LINOLEUM	1
32	10058966	油毡1	LINOLEUM	1
33	10058964	油毡安装板	MOUNTING PLATE	1



#### 4. 辅助压脚部件

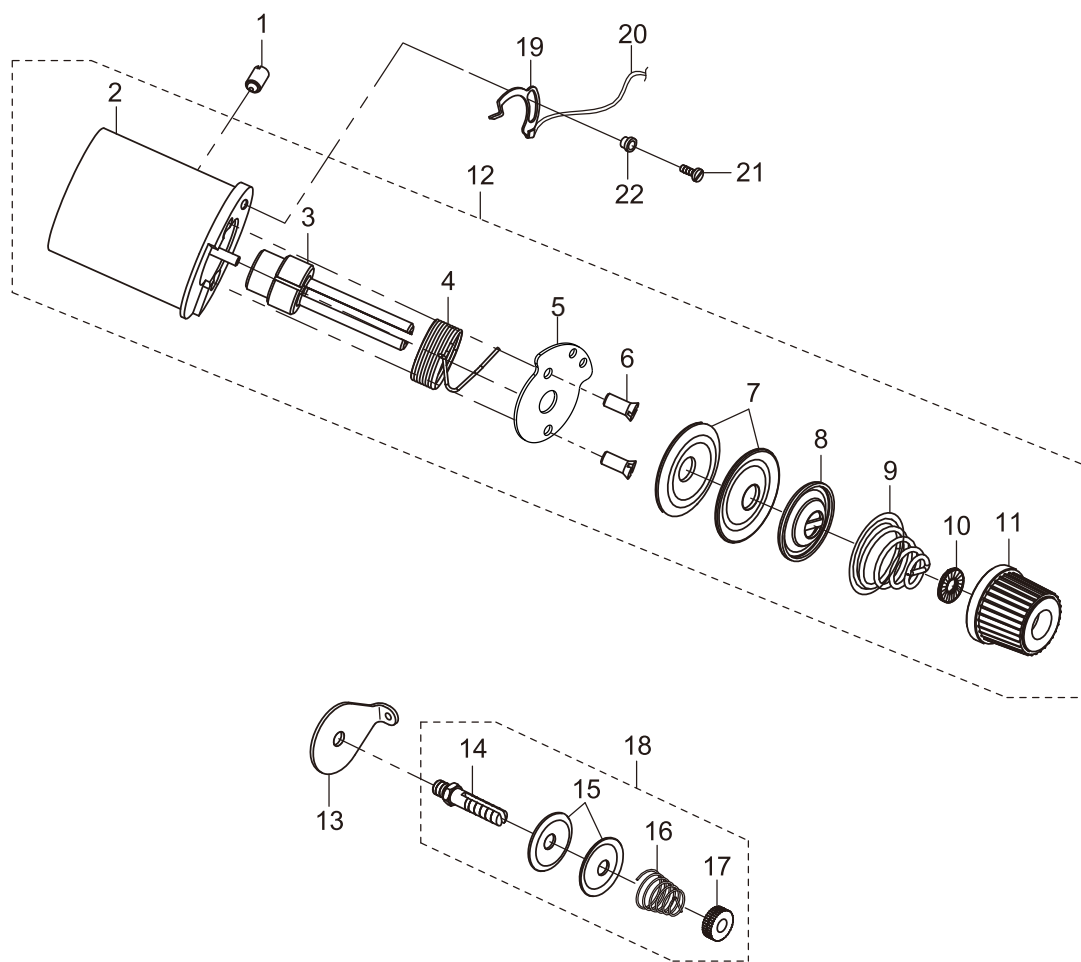


辅助压脚部件

AUXILIARY PRESSER MECHANISM COMPONENTS

序号 NO.	件号 Part No.	名称	DESCRIPTION	数量 Qty
1	10055187	辅助压脚气缸固定板	CYLINDER PLATE	1
2	10057345	螺钉	SCREW	2
3	10039466	辅助压脚气缸	CYLINDER	1
4	10052378	气管接头	TIE-IN	2
5	10005537	5垫圈	SPRING WASHER 5	6
6	10012318	5垫圈	WASHER 5	6
7	10013883	螺钉 M5 L=12	SCREW M5 L=12	8
8	10057345	螺钉 M5 L=10	SCREW M5 L=10	2
9	10055186	辅助压脚连接板3	CYLINDER PLATE	1
10	10054986	辅助压脚组件	AUXILIARY PRESSER FOOT	1
11	10057340	小辅助压脚	AUXILIARY PRESSER FOOT	1
12	10059101	盘形辅助压脚	AUXILIARY PRESSER FOOT	1
13		弹簧辅助压脚	AUXILIARY PRESSER FOOT	1
	10059092	安装板	MOUNTING PLATE	(1)
	10059093	活动底座	ACTIVITY BASE	(1)
	10059263	弹簧	SPRING	(1)

# 5. 松线部件

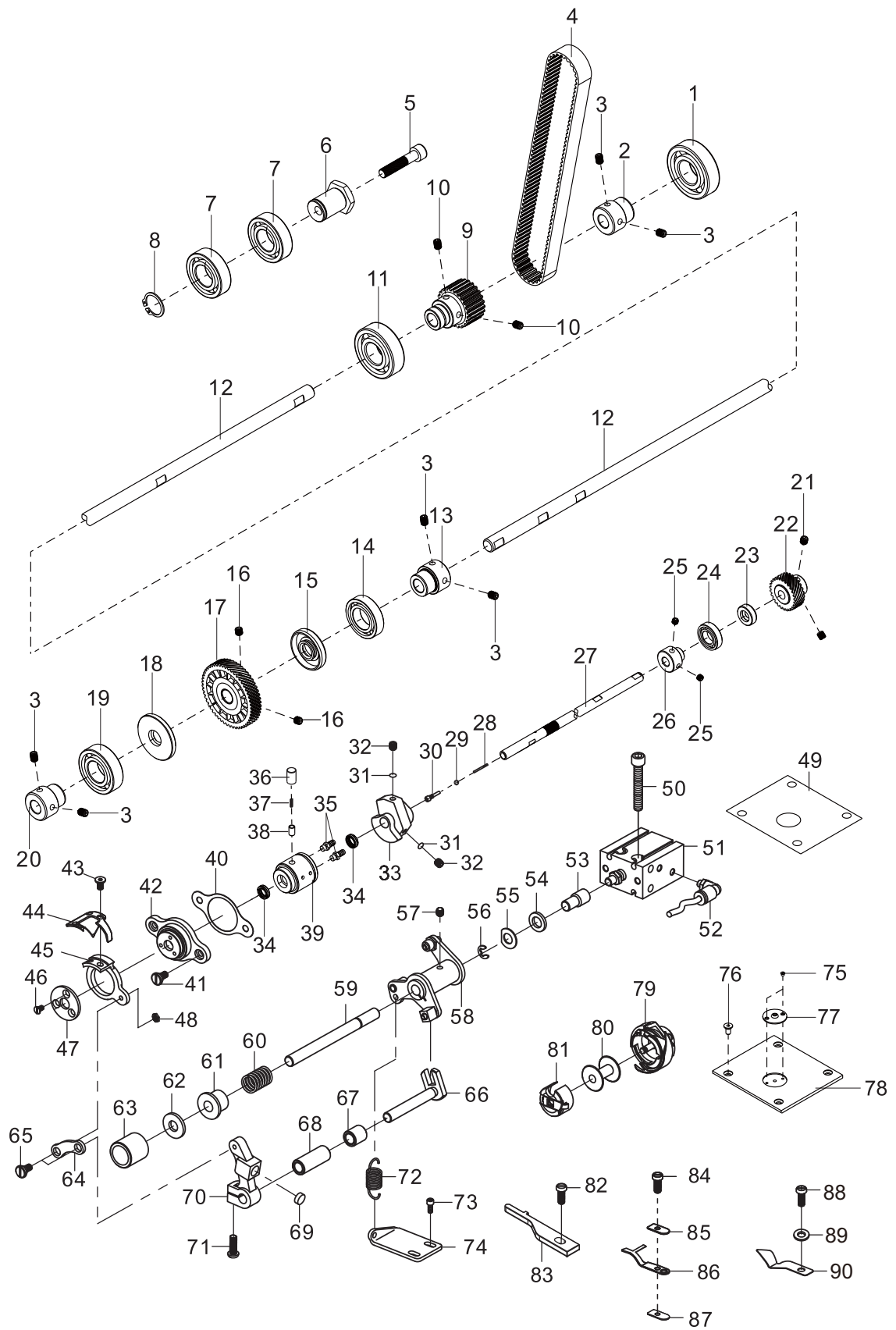


## 松线部件

## TENSION RELEASE &amp; THREAD TENSION COMPONENTS

序号 NO.	件号 Part No.	名称	DESCRIPTION	数量 Qty
1	10039435	螺钉	SCREW	1
2	10054295	全密封电磁铁	THREAD TENSION ELECTROMAGNET	1
3	10037581	夹线螺钉	SCREW	1
4	10049905	运模机挑线弹簧	SPRING	1
5	10049376	锁紧块	LOCK PLATE	1
6	10012730	螺钉	SCREW	2
7	10005489	过线板	THREAD TENSION DISK	2
8	10004625	松线板	THREAD TENSION DISK PRESSER	1
9	10004626	弹簧	SPRING	1
10	10004633	夹线制动板	ROTATING STOPPER	1
11	10004783	夹线螺母组件	THREAD TENSION NUT	1
12	20016296	夹线组件	THREAD NUT	
13	10000541	夹线器过线器	THREAD GUIDE	1
14	10004666	螺钉 SM15/64"×28	SCREW SM15/64"×28	(1)
15	10004393	夹线板	THREAD_TENSION_DISK	(2)
16	10004669	弹簧	SPRING	(1)
17	10004664	螺母 SM1/4"×40	SCREW SM1/4"×40	(1)
18	10011493	夹线组件	THREAD_TENSION_1_ASM	1
19	10049374	感应片	SENSOR CABLE	1
20	10002471	单芯电线	WIRE	1250
21	10002917	螺钉 M2.5 L=6	SCREW M2.5 L=6	2
22	10050978	传感片外绝缘片	BUSHING	1

## 6. 下轴及剪线部件(1)



## 下轴及剪线部件

## PRESSER MECHANISM &amp; PRESSER VARIABLE COMPONENTS

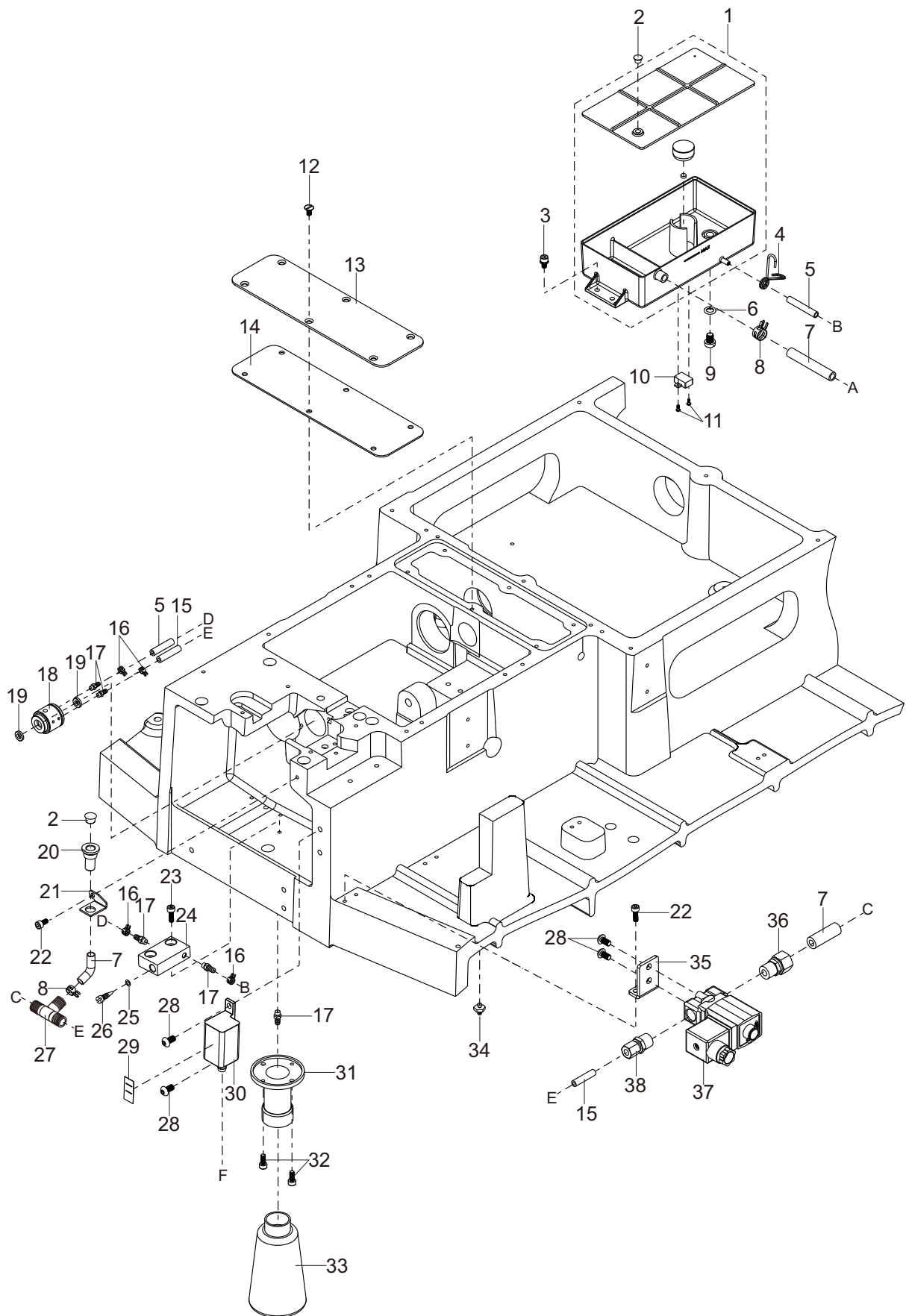
序号 NO.	件号 Part No.	名称	DESCRIPTION	数量 Qty
1	10054088	轴承62/22ZZ	BEARING 62/22ZZ	1
2	10040825	轴承衬套	BEARING SUPPORT	1
3	10010678	SM15/64"×28螺钉	SCREW SM15/64"×28	2
4	10037786	上轴同步带	TIMING BELT	1
5	10002020	M8×40螺钉	SCREW M8 L=10	1
6	10027837	张紧轮套	TENSION PULLEY	1
7	10050517	6004ZZ_BOM轴承	BEARING 6004ZZ_BOM	2
8	10007916	20挡圈	RING 20	1
9	10051566	抬牙轴同步齿形带轮	LOWER SPROCKET	1
10	10009187	M6×8螺钉	SCREW M6 L=8	2
11	10025881	6204NR-2RS_BOM轴承	BEARING 6204NR-2RS	1
12	10055052	下带轮轴	SHAFT	1
13	10037694	轴承衬套	BEARING SUPPORT	1
14	10037722	轴承6904ZZNR	BEARING 6904ZZNR	1
15	10012533	油封	OIL SEAL	1
16	10008862	SM1/4"×40螺钉	SCREW SM1/4"×40	2
17	10012462	齿轮	GEAR	1
18	10012538	油封	OIL SEAL	1
19	10025882	轴承 6004NR-2RS_BOM	BEARING 6004NR-2RS	1
20	10037694	轴承衬套	BEARING SUPPORT	1
21	10008862	SM1/4"×40螺钉	SCREW SM1/4"×40	2
22	10012554	齿轮	GEAR	1
23	10012423	油封	OIL SEAL	1
24	10026221	6901-ZZ_BOM轴承	BEARING 6901-ZZ	1
25	10012014	M5×4螺钉	SCREW M5 L=4	2
26	10049842	下轴后轴承挡圈	RING	1
27	10040498	下轴	SHAFT	1
28	10010063	油芯	OIL WICK	1
29	10000457	旋梭限油螺钉O形圈	O-RING	1
30	10010064	SM3/16"×32螺钉	SCREW SM3/16"×32	1
31	10023739	剪线凸轮垫	THREAD TRIMMER CAM WASHER	2
32	10013465	螺钉 SM1/4"×40	SCREW SM1/4"×40	2
33	10010736	剪线凸轮	THREAD TRIMMER CAM	1
34	10013029	油封	OIL SEAL	2
35	10008779	油管接头	JOINT	2
36	10054194	螺钉 M8×1	SCREW M8×1	1
37	10014386	柱塞簧	PLUNGER SPRING	1
38	10012609	柱塞	PLUNGER	1
39	10054060	900下轴前套	FRONT BUSHING	1
40	10051729	750动刀架座垫片	KNIFE BRACKET MOUNTING BASE GASKET	2
41	10011794	螺钉 M4 L=10	SCREW M4 L=10	2
42	10059306	动刀架座组件	KNIFE BRACKET MOUNTING BASE	1
43	10011588	螺钉 SM11/64"×40	SCREW SM11/64"×40	2
44	10026782	动刀	ROUND KNIFE	1
45	10040497	动刀架	ROUND KNIFE BRACKET	1
46	10009626	螺钉 M3 L=4.35	SCREW M3 L=4.35	3
47	10013026	刀架压板	KNIFE HOLDER	1
48	10009471	螺母	KUT	1
49	10053055	方形针板贴膜	SQUARE NEEDLE PLATE	1

## 下轴及剪线部件

## PRESSER MECHANISM &amp; PRESSER VARIABLE COMPONENTS

序号 NO.	件号 Part No.	名称	DESCRIPTION	数量 Qty
50	10009520	螺钉 M5 L=25	SCREW M5 L=25	2
51	10037705	剪线气缸	AIR CYLINDER	1
52	10052378	气管接头	HOSE ELBOW	2
53	10037640	剪线气缸接头	CYLINDER KNUCKLE	1
54	10011650	垫圈 8.2×15×2	WASHER 8.2×15×2	1
55	10014124	垫圈 8.4×15×5	WASHER 8.4×15×5	1
56	10009654	挡圈 6	E-RING 6	1
57	10008862	螺钉 SM1/4" ×40	SCREW SM1/4" ×40	1
58	10039207	切线凸轮曲柄组件	TRIMMING CAM CRANK ASM	1
59	10011697	切刀驱动轴	TRIMMING SHAFT	1
60	10008812	弹簧	SPRING	1
61	10014196	扭簧端盖	SPRING COVER	2
62	10013008	垫圈 8.2	WASHER 8.2	1
63	10014462	轴套	BUSHING	1
64	10013044	刀轴连杆	KNIFE SHAFT CONNECTING BAR	1
65	10026142	螺钉	SCREW	2
66	10013007	切线驱动曲柄轴	TRIMMING CRANK SHAFT	1
67	10040501	轴套	BUSHING	1
68	10054299	轴套	BUSHING	1
69	10013010	切线驱动曲柄止动块	CRANK BLOCK	1
70	10013013	切线驱动曲柄	TRIMMING CRANK	1
71	10009818	螺钉 SM3/16" ×32	SCREW SM3/16" ×32	1
72	10028226	弹簧	SPRING	1
73	10005350	螺钉 M4 L=8	SCREW M4 L=8	2
74	10038523	剪线拉簧板	FIXED PLATE	1
75	10053634	螺钉	SCREW	2
76	10040655	螺钉	SCREW	4
77	10038528	运模车小针板	SMALL NEEDLE PLATE	1
78	10048793	750针板	NEEDLE PLATE	1
79	10041772	HSM-B1HTR旋梭	HOOK	1
80	10039875	梭芯	BOBBIN	1
81	10039877	BC-DBM(1)-NBL1梭壳	BOBBIN CASE	1
82	10010373	螺钉 SM11/64" ×40	SCREW SM11/64" ×40	1
83	10041951	旋梭定位钩	BOBBIN CASE HOLDER	1
84	10009601	螺钉 SM9/64" ×40	SCREW SM9/64" ×40	1
85	10055264	定刀压板	FIXED KNIFE PLATE	1
86	10011421	定刀	FIXED KNIFE	1
87	10042100	定刀垫片	FIXED KNIFE GASKET	1
88	10046203	定刀座螺钉	FIXED KNIFE SCREW	1
89	10057346	分线器垫片	DISPART THREAN SHUTTLE GASKET	1
90	10026784	分线器	DISPART THREAN SHUTTLE	1

# 7. 润滑部件



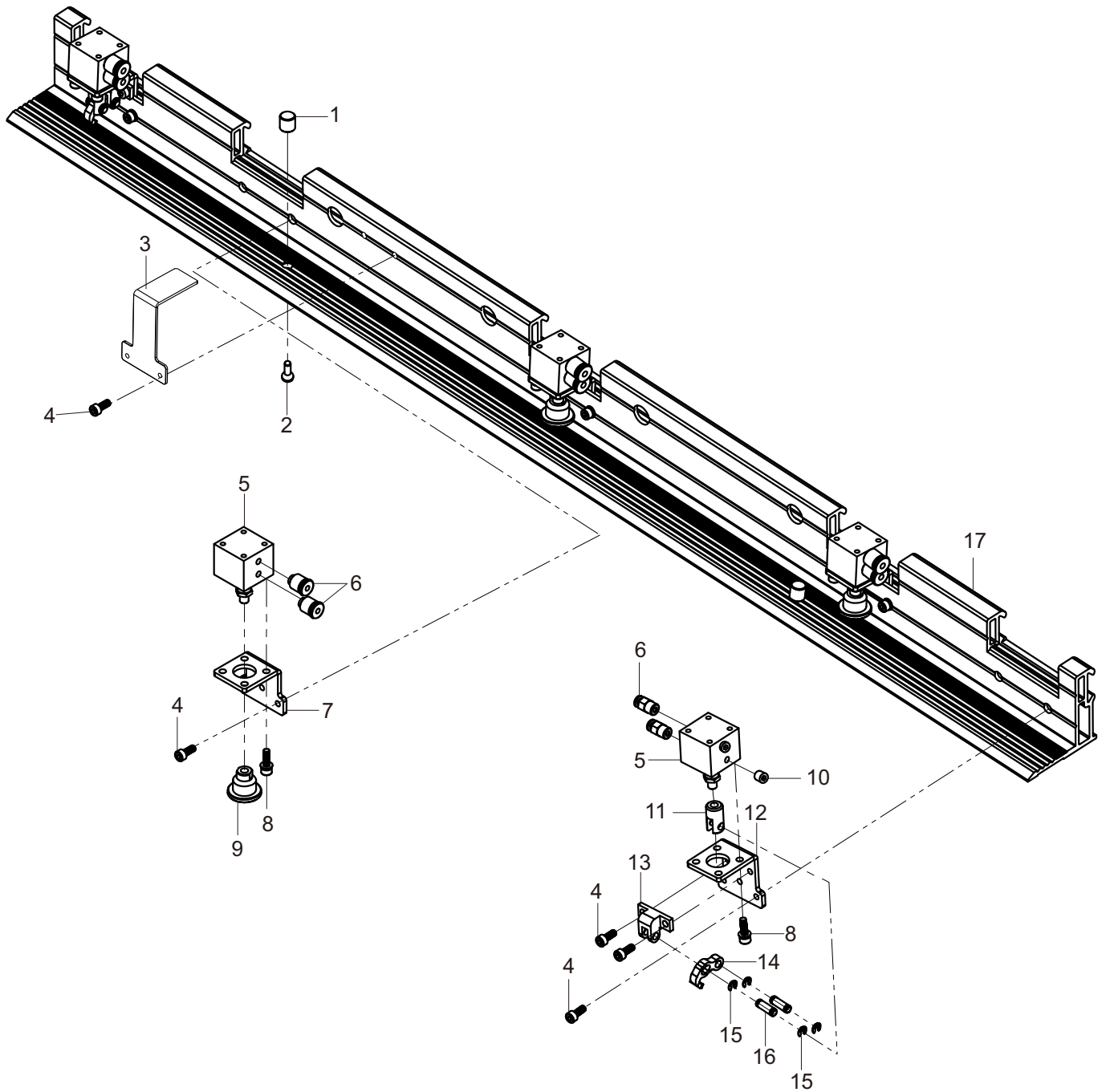


润滑部件

LUBRICATION COMPONENTS

序号 NO.	件号 Part No.	名称	DESCRIPTION	数量 Qty
1	10049823	油箱组件	OIL TANK	1
2	10008943	橡胶塞	RUBBER PLUG	1
3	10001239	螺钉组件	SCREW ASM	5
4	10022469	油管夹	SPRING CLIP	1
5	10007800	φ3×φ5油管	OIL TUBE φ3×φ5	1,500
6	10014461	6.5×20形圈	O-RING	3
7	10007806	φ8×φ10油管	OIL TUBE φ8×φ10	700
8	10013048	弹簧	SPRING	4
9	10008783	SM5/16"×24螺钉	SCREW SM5/16"×24	2
10	10054296	油量报警开关组件	SWITCH	1
11	10053851	PA1.6×6螺钉	SCREW	2
12	10009195	M4×7.80螺钉	SCREW M4 L=7.8	6
13	10037679	齿轮箱盖板	COVER PLATE	1
14	10038525	齿轮箱盖板垫	PLATE	1
15	10007796	φ4×φ6油管	OIL TUBE φ4×φ6	650
16	10012160	弹簧	SPRING	2
17	10008779	油管接头	JOINT	2
18	10054060	900下轴前套	SHAFT SLEEVE	1
19	10013029	7.94×12×3.5油封	OIL SEAL 7.94×12×3.5	2
20	10008780	加油杯	OIL FILLER CUP	1
21	10054049	小油杯架	BRACKET	1
22	10003399	螺钉M4×8	SCREW M4 L=8	3
23	10000863	螺钉M4×12	SCREW M4 L=12	1
24	10010517	油量调节阀	OIL REGULATING VALVE	1
25	10000567	油量调节阀O形圈	O-RING	1
26	10000566	油量调节杆	REGULATING ROD	1
27	10054223	油管三通接头	T-JOINT	1
28	10007096	M5×10螺钉	SCREW M5 L=10	4
29	10048826	油位标贴	OIL LEVEL LABEL	1
30	10005291	小油箱组件	SMALL OIL TANK	1
31	10011683	油杯座	OILCAN HOLDER	1
32	10005041	M4×10内六角圆头螺栓	SCREW M4 L=10	2
33	10011681	油杯	OILCAN	1
34	10048780	油管接头	JOINT	1
35	10055081	电磁阀安装板	MOUNTING PLATE	1
36	10050201	锁母直通终端	JOINT	1
37	10042039	2KW03-08电磁阀	SOLENOID VALVE	1
38	10050200	锁母直通终端	JOINT	1

# 8. X-Y送料部件(1)

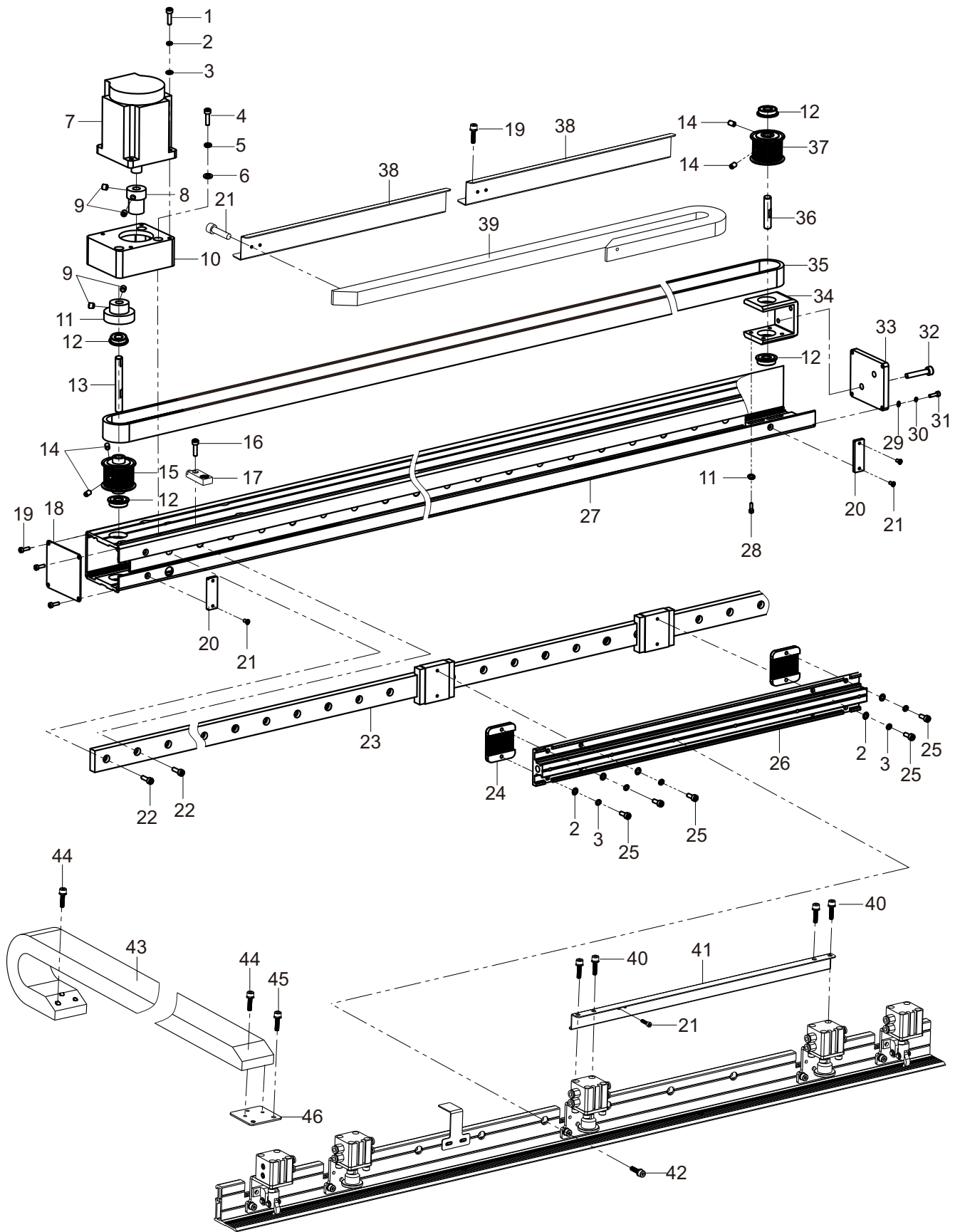


## X-Y送料部件 (1)

## FEEDING COMPONENTS

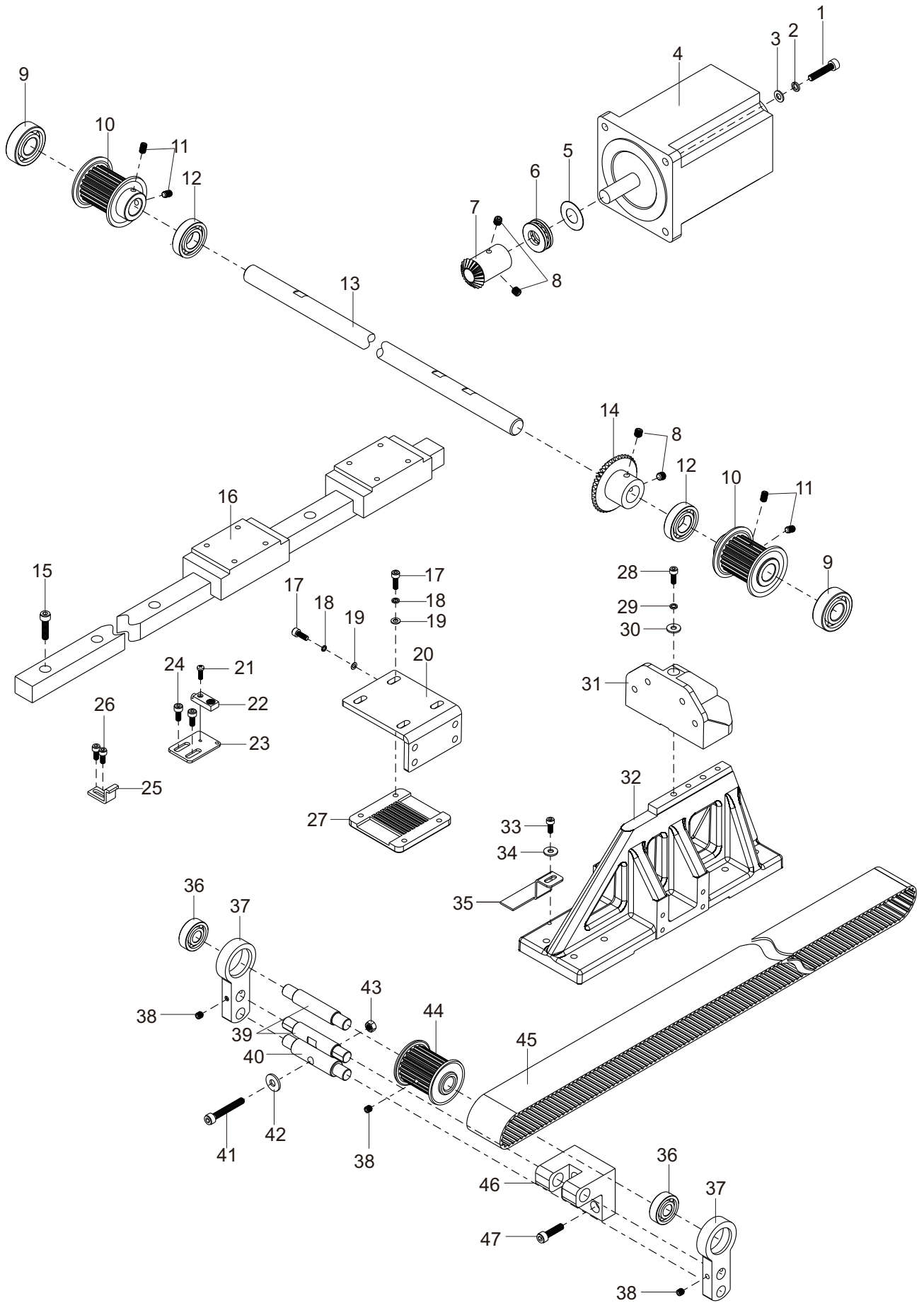
序号 NO.	件号 Part No.	名称	DESCRIPTION	数量 Qty
1	10052200	销	SPRING PIN	2
2	10040655	螺钉	SCREW M4 L=5.5	2
3	10061648	X向传感器感应片	X SENSOR MOUNTING	1
4	10001239	螺钉组件	SCREW M4 L=8	18
5	10060548	气缸	AIR CYLINDER	5
6	10061374	接头_PC04-M5C	JOINT	16
7	10054455	安装板A	MOUNTING PLATE A	3
8	10059054	螺钉组件	SCREW M4 L=16	20
9	10054452	压紧套B	PRESSING BLOCK	3
10	10012162	螺钉	SCREW M5 L=5	4
11	10054451	气缸接头	JOINT	2
12	10054456	安装板B	MOUNTING PLATE B	2
13	10054453	铰接座	HINGE SEAT	2
14	10054454	爪勾	CLAW HOOK	2
15	10003248	3挡圈	E-RING 3	8
16	10000413	短销 5×15.5	SHORT PIN	4
17	10060015	铝型材模板导轨	ALUMINUM PROFILE GUIDE	1

# 9. X-Y送料部件(2)



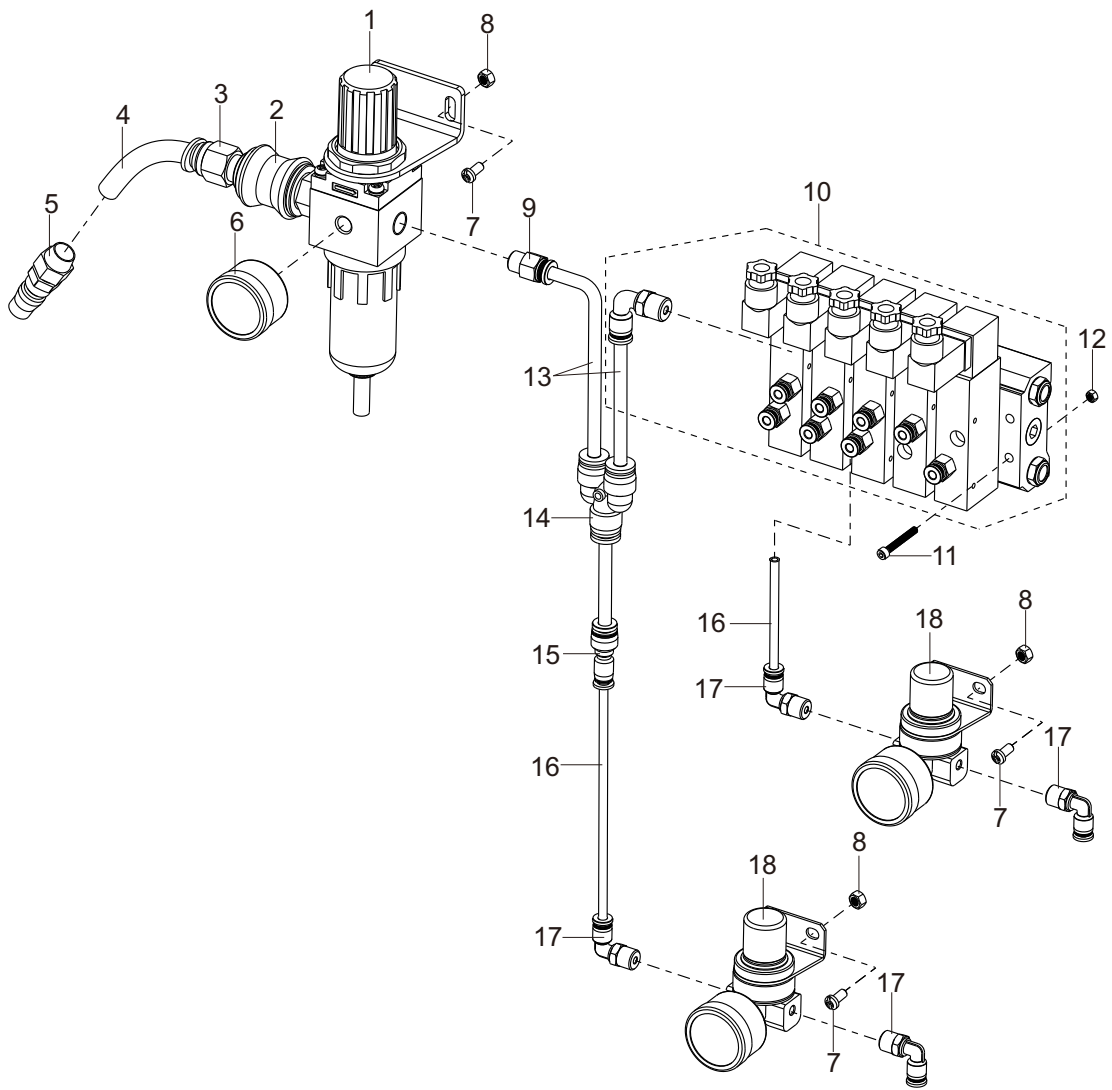
序号 NO.	件号 Part No.	名称	DESCRIPTION	数量 Qty
1	10003107	螺钉	SCREW M4 L=16	4
2	10002991	4垫圈	WASHER 4	16
3	10002954	4垫圈	WASHER 4	20
4	10003164	螺钉	SCREW M6 L=16	3
5	10005537	5弹簧垫圈	WASHER 5	3
6	10012318	5垫圈	WASHER 5	3
7	10061930	X向低压闭环步进电机	STEPPING MOTOR	1
8	10000175	X向电机直齿轮	SPUR GEAR	1
9	10011232	螺钉	SCREW M6 L=6	4
10	20022586	电机座喷漆	MOTOR BASE	1
11	10000551	X向传动直齿轮		1
12	10009776	F698ZZ轴承	BEARING	4
13	10059908	主动销	PIN	1
14	10004949	螺钉	SCREW M5 L=8	4
15	10059924	HTPA20S5M-1	HTPA20S5M-1	1
16	10000984	螺钉	SCREW M3 L=9.5	1
17	10061984	X向传感器	X DIRECTION SENSOR	1
18	10060011	盖板	COVER PLATE	1
19	10001513	螺钉	SCREW M3 L=6	4
20	10060010	限位块	LIMIT BLOCK	2
21	10009667	螺钉	SCREW M3 L=6	8
22	10000863	螺钉	SCREW M4 L=12	15
23	10061274	直线导轨	LINEAR GUIDE RAIL	1
24	10050626	X向同步带压板	PRESS PLATE	2
25	10048800	螺钉	SCREW M4 L=10	8
26	10060016	铝型材送料支撑座	SUPPORT SEAT	1
27	10061273	送料座	FEED SEAT	1
28	10003399	螺钉	SCREW M4 L=8	4
29	10003071	3垫圈	WASHER 3	4
30	10003082	3垫圈	WASHER 3	4
31	10003874	螺钉	SCREW M3 L=14	4
32	10035069	螺钉	SCREW M5 L=28	2
33	10059912	拉紧板	TIGHTEN PLATE	1
34	10059919	张紧轮安装板	MOUNTING PLATE	1
35	10035069	X向开口同步带	SYNCHRO BELT	3500
36	10059903	传动销	PIN	1
37	10059925	HTPA20S5M-2	HTPA20S5M-2	1
38	10060013	挡板	BAFFLE	2
39	10059560	塑料拖链	PLASTIC DRAG CHAIN	1
40	10001239	螺钉	SCREW M4 L=8	4
41	10061094	800同步带款拖链安装板	MOUNTING PLATE	1
42	10003875	螺钉组件	SCREW M4 L=8	6
43	10057727	坦克链15*30	PLASTIC DRAG CHAIN	1
44	10040655	螺钉	SCREW M4 L=5.5	4
45	10012553	螺钉	SCREW M4 L=8	2
46	10060009	拖链过渡板	MOUNTING PLATE	1

# 10. X-Y送料部件(3)



序号 NO.	件号 Part No.	名称	DESCRIPTION	数量 Qty
1	10006118	螺钉 M5 L=25	SCREW M5 L=25	4
2	10012318	5垫圈	WASHER 5	4
3	10005537	5垫圈(GB/T93-1987)	WASHER 5	4
4	10061931	X向低压闭环步进电机	STEPPING MOTOR	1
5	10005109	14调整垫片	WASHER 14	3
6	10003684	51101轴承	BEARING	1
7	10053328	Y向主动齿轮	Y-DRIVE GEAR	1
8	10011232	螺钉 M6 L=6	SCREW M6 L=6	4
9	10003585	6302ZZNR轴承	BEARING	2
10	10053998	900Y向同步带轮	Y-SYNCHRONOUS PULLEY	2
11	10004949	螺钉 M5 L=8	SCREW M5 L=8	4
12	10009787	6202ZZNR轴承	BEARING	2
13	10057437	Y向带轮轴	WHEEL SHAFT	28
14	10050756	Y向从动齿轮	DRIVEN GEAR	2
15	10003141	螺钉 M5 L=20	SCREW M5 L=20	28
16	10055053	直线导轨	LINEAR GUIDE RAIL	2
17	10010958	螺钉 M5 L=14	SCREW M5 L=14	16
18	10005537	5垫圈(GB/T93-1987)	WASHER 5	16
19	10009469	5垫圈	WASHER 5	16
20	10054001	900Y向同步带座	MOUNTING SEAT	2
21	10000984	螺钉	SCREW	1
22	10061949	Y传感器连接线揽	Y SENSOR	1
23	10058286	Y向传感器安装板	SENSOR MOUNTING PLATE	1
24	10003875	螺钉 M4 L=10	SCREW M4 L=10	2
25	10052226	导轨限位块	LIMIT BLOCK	4
26	10003162	螺钉 M5 L=12	SCREW M5 L=12	8
27	10054002	900Y向同步带压板	PRESS PLATE	2
28	10003164	M5×16螺钉	SCREW M5 L=16	16
29	10005537	5垫圈(GB/T93-1987)	WASHER 5	16
30	10012318	5垫圈	WASHER 5	16
31	10058217	支撑座	SUPPORT SEAT	2
32	10058215	送料座	FEED SEAT	2
33	10003875	螺钉	SCREW M4 L=8	1
34	10002954	4垫圈	WASHER 4	1
35	10058216	Y向原点感应片	DETECTION PLATE	1
36	10003576	6000ZZ轴承	BEARING	4
37	10050883	张紧板	TENSIONING PLATE	4
38	10012162	螺钉 M5 L=5	SCREW M5 L=5	12
39	10053997	900张紧轴	TENSIONING SHAFT	4
40	10054000	900张紧轴2	TENSIONING SHAFT 2	2
41	10003100	螺钉	SCREW M5 L=35	2
42	10000480	6垫圈	WASHER 6	2
43	10009467	螺母 M5	NUT M5	2
44	10054003	900Y向同步带从动轮	Y-DRIVEN GEAR	2
45	10054063	900开口橡胶同步带	SYNCHRONOUS BELT	5,020
46	10053999	900张紧座	TENSIONING PLATE	2
47	10003141	螺钉 M5 L=20	SCREW M5 L=20	6

# 11.气动部件



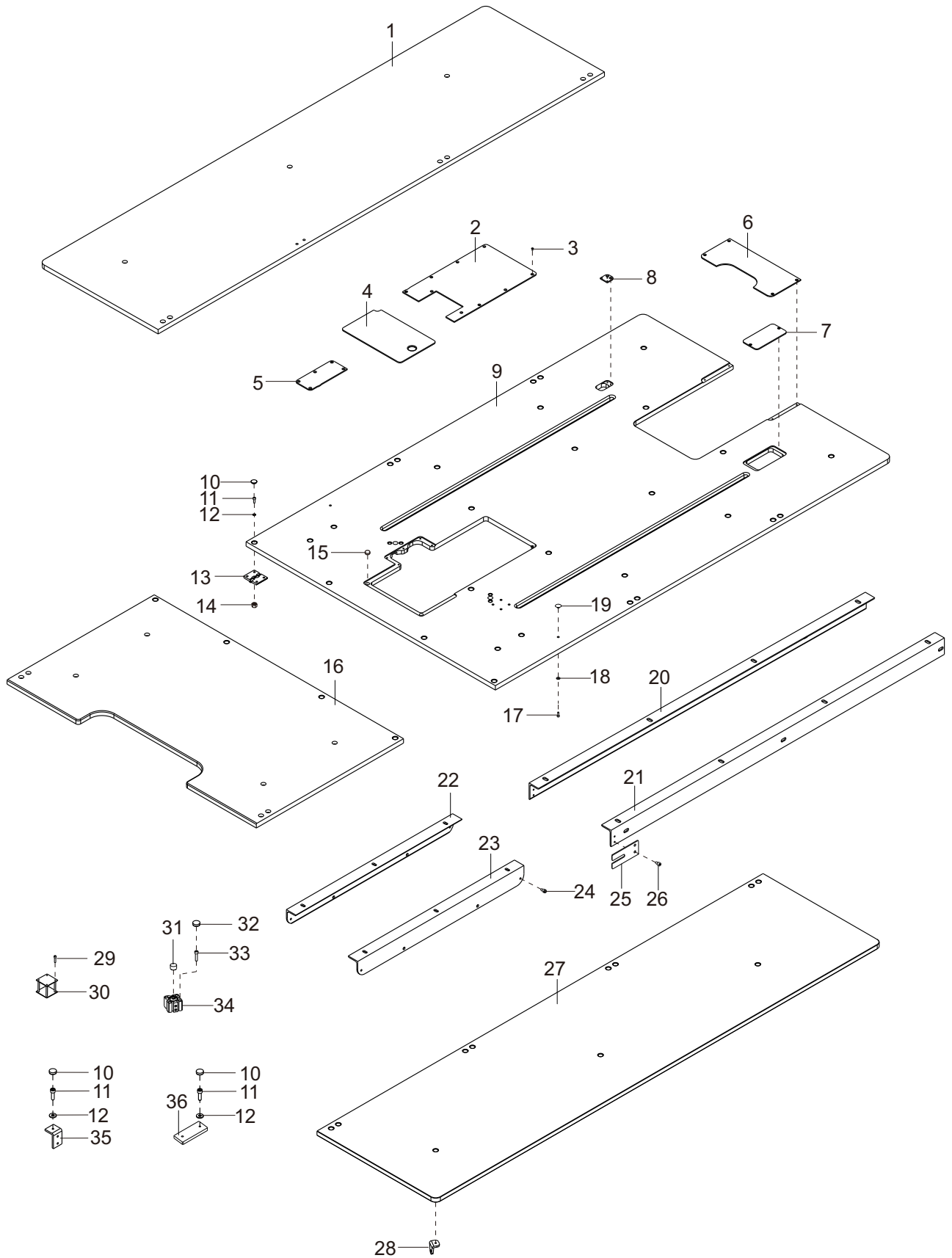


气动部件

PNEUMATIC COMPONENTS

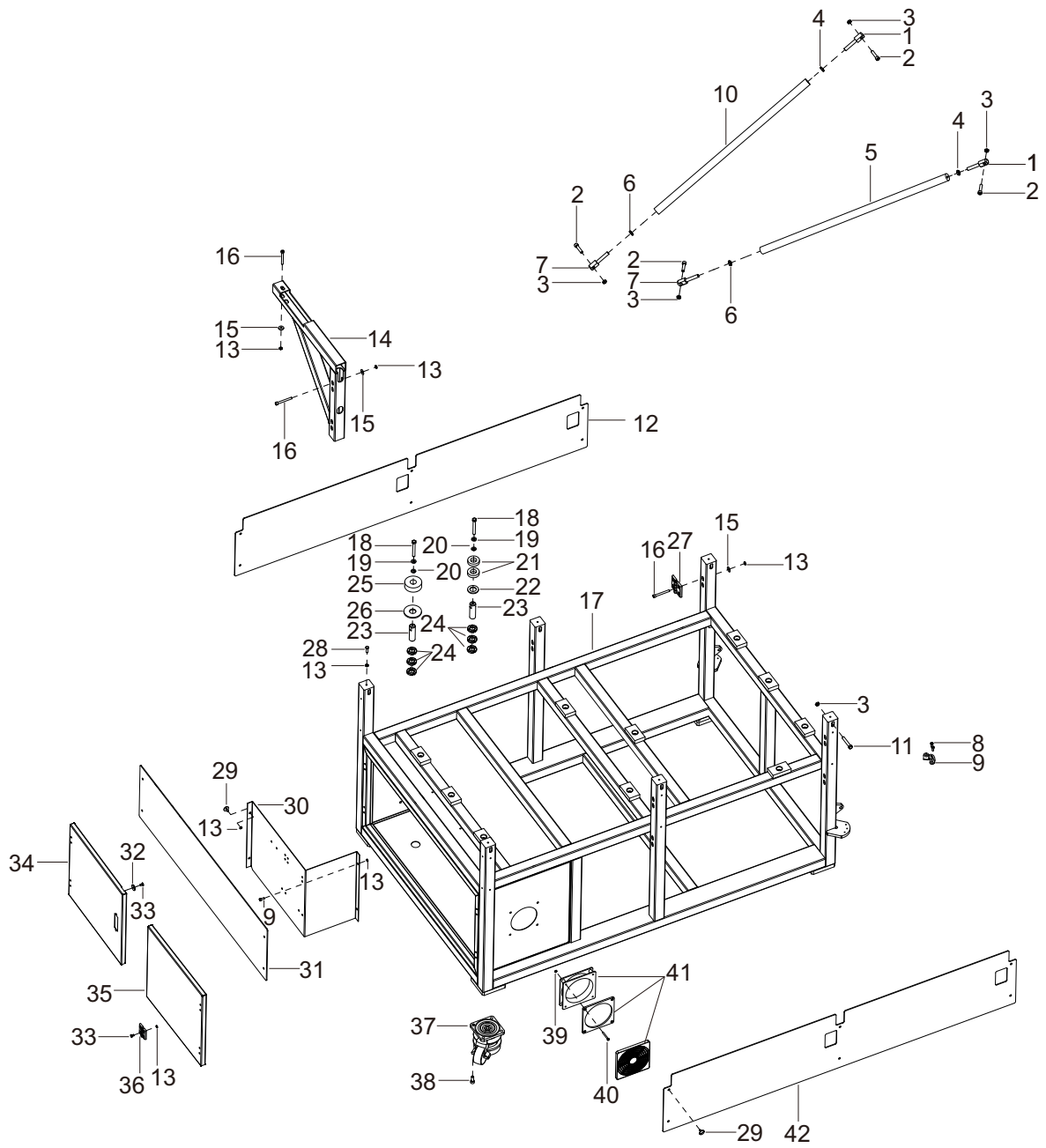
序号 NO.	件号 Part No.	名称	DESCRIPTION	数量 Qty
1	10007604	AW20-02过滤减压阀	FILTER REGULATOR	1
2	10007534	ATC HSV08手滑阀	HAND SLIDE VALVE	1
3	10003458	APC10-02 Φ10阀进气直通接头	PLUG APC10-02	1
4	10008151	ATC PUC1065透明气管	TUBE Φ10×Φ6.5	
5	10024399	接头	PLUG Φ10×R1/4	1
6	10007620	带压力开关的压力表	AIR PRESSURE SWITCH	1
7	10003883	面板螺钉	SCREW	4
8	10009467	螺母 M5	NUT M5	4
9	10031295	接头	HALF UNION APC6-02	1
10	10050465	五电磁阀组件	5 PORT SOLENOID VALVE GROUP	1
11	10002180	螺钉 M4 L=30	SCREW M4 L=30	4
12	10009471	螺母 M4	NUT M4	4
13	10008150	气管	TUBE Φ6×Φ4	
14	10039672	Y型三通接头	Y-QUICK COUPLING	2
15	10054472	IPUG-4-A接头	SCREW M4 L=10	1
16	10008119	气管	TUBE Φ4×Φ2.5	
17	10053405	接头	PLUG PL4-01	3
18	10052370	AR1500压脚压力调节阀	REDUCING VALVE	2

## 12.大縫台部件



序号 NO.	件号 Part No.	名称	DESCRIPTION	数量 Qty
1	10055061	辅助台板左	LEFT TABLE	1
2	10055064	剪线上盖板	COVER LABLE	1
3	10051846	螺钉	SCREW	22
4	10055065	梭芯盖板组件	COVER LABLE	1
5	10056918	800切刀盖板	800-COVER LABLE	1
6	10055063	后台板贴	TABLE LABLE	1
7	10055066	电机盖板	COVER LABLE	1
8	10058223	拖链安装板2	DRAG CHAIN PLATE	1
9	10058220	台板面	TABLE	1
10	10056183	橡胶塞	RUBBER PLUG	64
11	10009008	M6×16螺钉	SCREW M6 L=16	64
12	10012856	6.5×12×1垫圈	WASHER 6.5×12×1	78
13	10060098	锌合金合页	ZINC ALLOY HINGE	8
14	10003032	M6螺母	NUT M6	46
15	10001096	磁铁	MAGNET	4
16	10058250	小台板面	SMALL TABLE	1
17	10001033	M3×10螺钉	SCREW	2
18	10041012	大垫圈3 (GB/T 96.2-2002)	WASGER	2
19	10055663	顶销	APEX PIN	2
20	10055079	4060角铝左	LEFT ALUMINIUM PROFILE	1
21	10055078	4060角铝右	RIGHT ALUMINIUM PROFILE	1
22	10055076	APS-L4060 直角角铝-2-左	LEFT ALUMINIUM PROFILE APS-L4060	1
23	10055077	APS-L4060 直角角铝-2-右	RIGHT ALUMINIUM PROFILE APS-L4060	1
24	10054095	螺钉销2	SHOULDER SCREW	2
25	10054068	连接板	CONNECTING BOLCK	2
26	10003162	M5×12螺钉	SCREW M5 L=12	4
27	10055062	辅助台板右	RIGHT TABLE	1
28	10055075	台板安装板	MOUNTING PLATE	8
29	10000909	M3×8螺钉	SCREW	4
30	10061934	RFID扫码识别器	RFID CODE RECOGNIZER	1
31	10059444	模板顶柱	TOP COLUMN	2
32	10061304	橡胶塞	RUBBER PLUG	4
33	10003141	螺钉M5×20 (GB/T 70.1-2000)	SCREW	4
34	10059341	气缸	AIR CYLINDER	2
35	10055075	台板安装板	MOUNTING PLATE	8
36	10055080	拉紧板	CONNECTING PLATE	2

# 13.机架部件

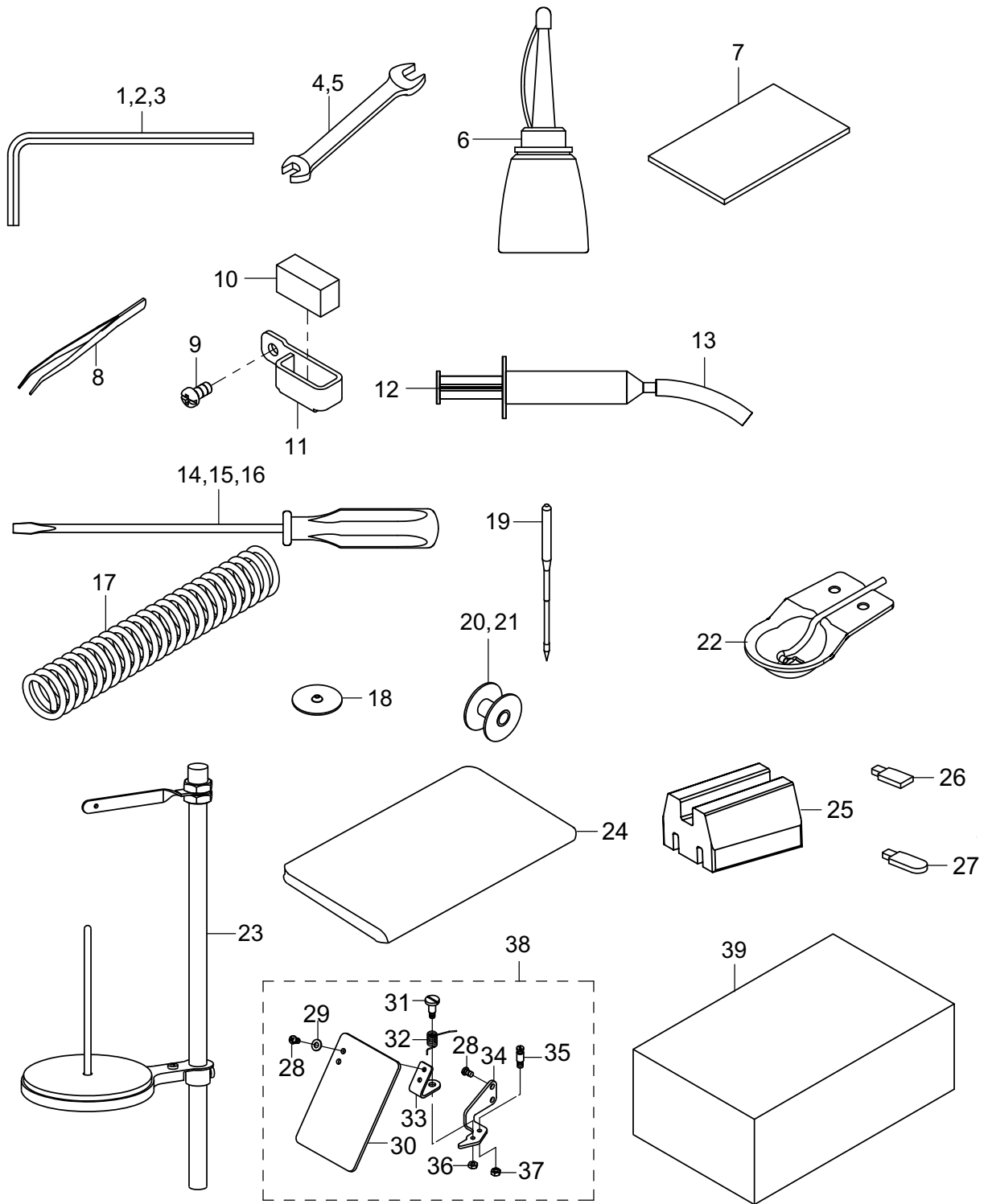


## 机架部件

## MACHINE FRAME COMPONENTS

序号 NO.	件号 Part No.	名称	DESCRIPTION	数量 Qty
1	10054069	接头A	JOINT A	4
2	10006283	M8×35螺钉	SCREW M8 L=35	8
3	10003131	M8螺母	NUT M8	14
4	10054091	M10螺母	NUT M10	4
5	20020207	支撑杆喷漆(短)	SUPPORT ROD (SHORT)	2
6	10054090	M10螺母 左旋	NUT M10-L	4
7	10054070	接头B	JOINT B	4
8	10003162	M5×12螺钉	SCREW M5 L=12	6
9	10055085	支撑板1	SUPPORT BAR 1	2
10	20020208	支撑杆喷漆(长)	SUPPORT ROD (LONG)	2
11	10054084	M8*50螺栓	SCREW M8 L=50	6
12	10055090	右侧挡板	RIGHT BAFFLE	1
13	10003032	M6螺母	NUT M6	42
14	20021221	900辅助台板支撑架组件喷漆件	900-AUXILIARY PLATEN SUPPORT ASSEMBLY	4
15	10003019	6垫圈	WASHER 6	36
16	10003790	M6×55螺钉	SCREW M6 L=55	36
17	20021316	800减重机架组件	800-MACHINE FRAME	1
18	10059271	M8×65螺栓	SCREW M8 L=65	7
19	10054005	橡胶垫B	RUBBER PLATE B	7
20	10002948	8垫圈	WASHES 8	8
21	10054004	橡胶垫A	RUBBER PLATE A	9
22	10054852	Φ20平垫圈	WASHER Φ20	3
23	10054074	M20×1.5螺柱	SCREW M20	9
24	10054086	小圆螺母	RUBBER PLATE A	24
25	10057527	橡胶垫A	RUBBER PLATE A	5
26	10055382	Φ20平垫圈	WASHER Φ20	5
27	10059338	金属合页	METAL HINGE	8
28	10052876	M6×20螺栓	SCREW M6 L=20	6
29	10041876	螺钉	SCREW	19
30	10055525	隔板	PARTITION	1
31	10055091	后挡板	BACK BAFFLE	1
32	10059339	磁铁	MAGNET	2
33	10030193	M5×10螺钉	SCREW M5 L=10	18
34	10055522	电控箱左侧门	ELECTRIC CONTROL BOX LEFT DOOR	1
35	10055523	电控箱右侧门	ELECTRIC CONTROL BOX ON THE RIGHT DOOR	1
36	10059338	金属合页	METAL HINGE	4
37	10057044	一体式脚轮	INTEGRAL ANGLE WHEEL	4
38	10003093	M8×20螺钉	SCREW M8 L=20	16
39	10009471	M4螺母	NUT M4	4
40	10007044	M4×40螺钉	SCREW M4 L=40	4
41	10054081	散热风扇12025	COOLING FAN	1
42	10055089	左侧挡板	LEFT BAFFLE	1

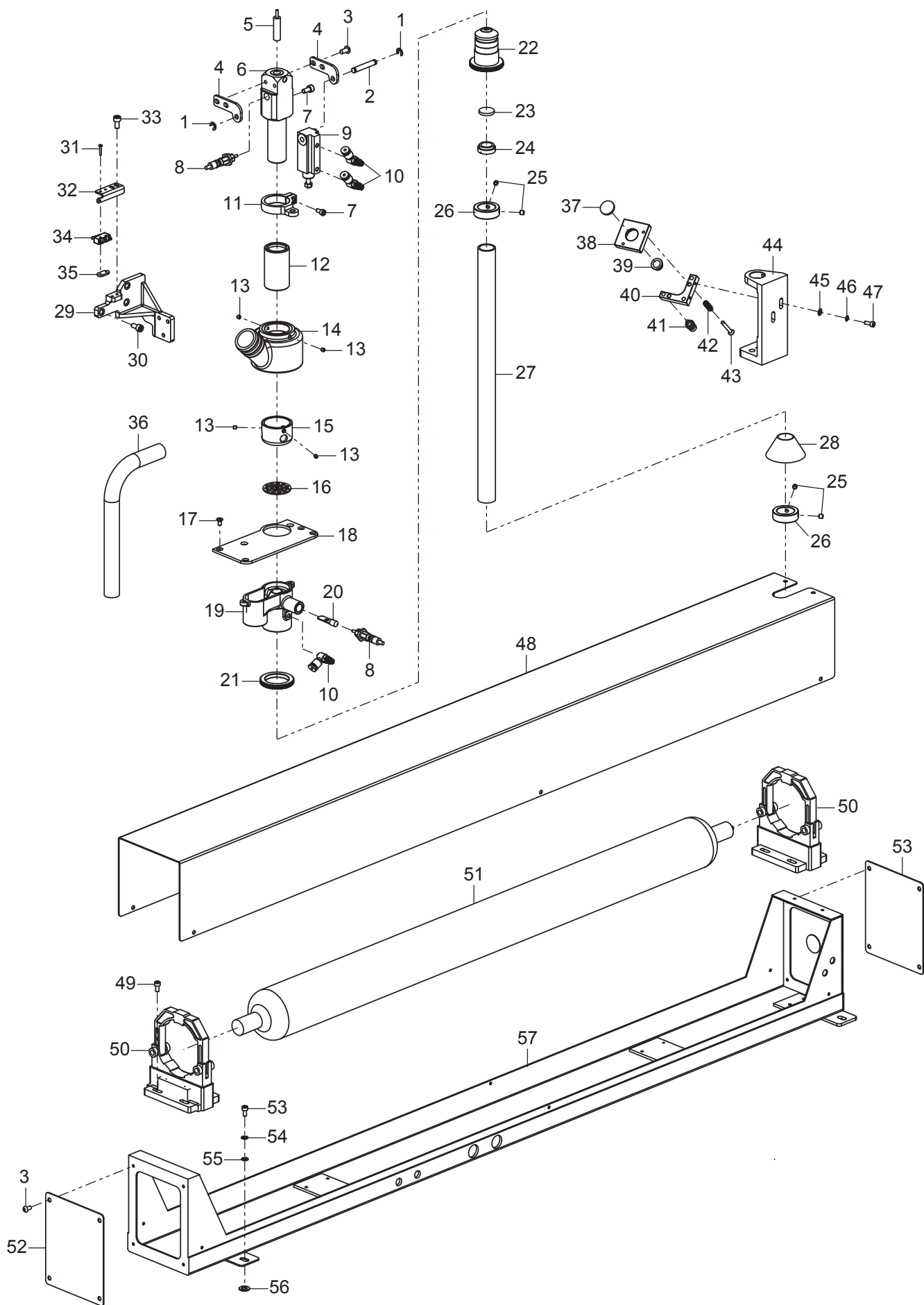
# 15.附件部件



序号 NO.	件号 Part No.	名称	DESCRIPTION	数量 Qty
1	10009685	内六角扳手 3	HEXAGONAL WRENCH 3	1
2	10009687	内六角扳手 4	HEXAGONAL WRENCH 4	1
3	10009689	内六角扳手 5	HEXAGONAL WRENCH 5	1
4	10003369	呆扳手 8×10	WRENCH 8×10	1
5	10003368	呆扳手 9×11	WRENCH 9×11	1
6	10005356	油壶	OLI CAN	1
7	20009052	油脂软盒_加油脂后	OIL BOX	1
8	10004247	镊子组件	TWEEZERS	1
9	10011143	螺钉 SM9/64"×40 L=7	SCREW SM9/64"×40 L=7	1
10	10000396	硅油毡	FELT	1
11	10000398	硅油板	THREAD GUIDE	1
12	10003361	注射器	INJECTOR	1
13	10007800	油管 φ3×φ5	TUBE φ3×φ5	60
14	10010994	大螺丝刀	SCREW DRIVER LARGE	1
15	10010995	中螺丝刀	SCREW DRIVER MIDDLE	1
16	10013185	小螺丝刀	SCREW DRIVER SMALL	1
17	60000115	吹气管	INPUT TUBE	1
18	10038528	运模车小针板	SMALL NEEDLE PLATE	2
19	10053820	机针 DP×5 10#	NEEDLE DP×5 10#	10
20	10025484	梭心	BOBBIN	2
		<用于-01>		
21	10039875	梭心	BOBBIN	2
		<用于-02>		
22	10055183	小辅助压脚组件	AUXILIARY PRESSER FOOT	1
23	10050764	线架部件	THREAD STAND	1
24	10051549	5775防雨罩	5775-COVER	1
25	10041496	机头发泡	NOSE FOAM	1
26	10040794	U盘	U DISK	1
27	10047881	加密狗	ENCRYPTION DOG	1
28	10011570	螺钉 SM11/64"×40 L=7	SCREW SM11/64"×40 L=7	(4)
29	10011680	垫圈 4.6×9.7×0.8	WASHER 4.6×9.7×0.8	(2)
30	10011636	安全板	SAFETY PLATE	(1)
31	10011677	螺钉轴	HINGE SCREW	(1)
32	10011678	弹簧	SPRING	(1)
33	10011684	安全板架组件	SAFETY PLATE INSTALLING PLATE B	(1)
34	10011632	安全板座	SAFETY PLATE INSTALLING PLATE A	(1)
35	10011633	销钉	SCREW PIN	(1)
36	10010370	螺母 SM11/64"×40	NUT SM11/64"×40	(1)
37	10011682	螺母 SM3/16"×28	NUT SM3/16"×28	(1)
38	20004358	眼睛防护罩组件	SAFETY PLATE ASM	1
39	10000400	附件箱	FCESSORY FOX	1

-01小旋梭 -02大旋梭

# 16. 激光部件 (1)



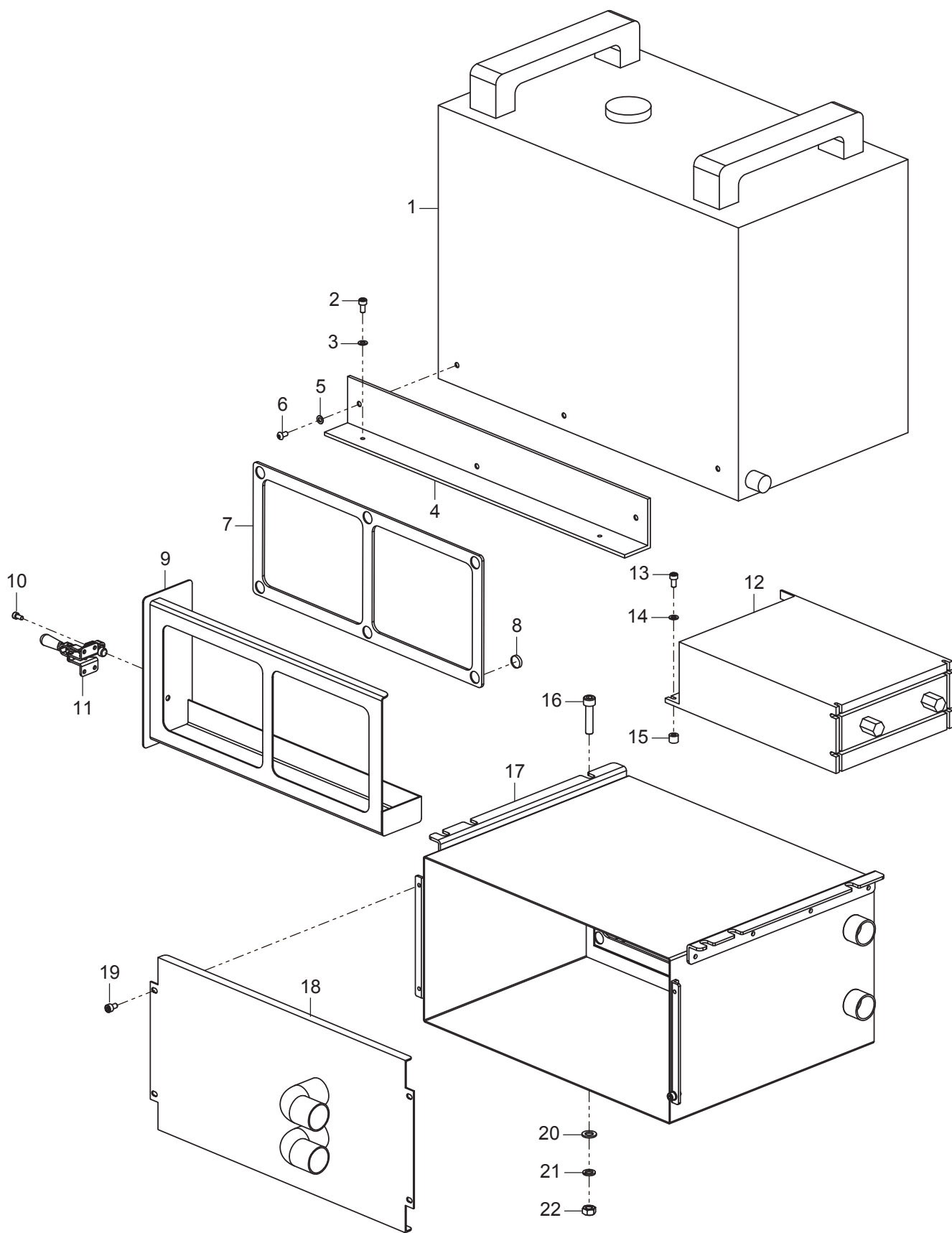


## 激光部件 (1)

## WIPER MECHANISM COMPONENTS

序号 No.	件号 Part No.	名称	DESCRIPTION	数量 Qty
1	10003289	挡圈 12	RING 12	2
2	10058755	气缸固定销	PIN	1
3	10007096	螺钉 M5 L=10	SCREW M5 L=10	20
4	10058754	气缸固定板		2
5	10058759	激光灯		1
6	10058751	压料导向座		1
7	10003399	螺钉 M4 L=8	SCREW M4 L=8	4
8	10058870	针型气缸组件		2
9	10001263	气缸组件	AIR CYLINDER	1
10	10052378	气管接头	JOINT	3
11	10058756	连接环		1
12	10058752	压料导向套		1
13	10001514	螺钉 M4 L=4	SCREW M4 L=4	4
14	10061438	侧吸风罩		1
15	10058753	压料座		1
16	10058749	下吸气蜂窝板		1
17	10051846	螺钉 M4 L=8	SCREW M4 L=8	6
18	10061210	激光切刀盖板		1
19	10061432	下吸气座		1
20	10058746	下防尘盖组件		1
21	10058743	聚光镜锁紧螺母		1
22	10059299	聚光镜安装座		1
23	10059420	聚光镜		1
24	10058744	聚光镜固定螺母		1
25	10012162	螺钉 M5 L=5	SCREW M5 L=5	4
26	10059552	激光保护管固定挡圈		2
27	10059424	激光保护管		1
28	10059789	塔型防尘套		1
29	20021975	吸气压料组件固定座		1
30	10007096	螺钉 M5 L=10	SCREW M5 L=10	3
31	10003052	螺钉 M2 L=12	SCREW M2 L=12	2
32	10059414	激光安全开关固定板		1
33	10003875	螺钉 M4 L=8	SCREW M4 L=8	2
34	10059419	激光安全开关		1
35	10005877	螺母		1
36	10061357	波纹管		4
37	10059421	反光镜		1
38	10059416	激光反光镜安装板		1
39	10059417	激光反光镜盖		1
40	10059418	反光镜调节座		1
41	10059423	反光镜调节铜螺钉		3
42	10059422	反光镜调节弹簧		2
43	10003416	螺钉 M4 L=30	SCREW M4 L=30	2
44	10059415	激光反光镜安装座		1
45	10002954	垫圈 4	WASHER 4	2
46	10002991	弹簧垫圈 4	SPRING WASHER 4	2
47	10005041	螺钉 M4 L=10	SCREW M4 L=10	2
48	10058867	激光管罩壳盖		1
49	10003098	螺钉 M5 L=6	SCREW M5 L=6	8
50	10058826	激光管固定座		2
51	10058816	激光管		1
52	10059431	Z-91-382648-07\激光罩壳端盖		2
53	10003141	螺钉 M5 L=20	SCREW M5 L=20	4
54	10005537	弹簧垫圈	SPRING WASHER 5	4
55	10010954	垫圈 5.2×15×2	WASHER 5.2×15×28.2	4
56	10013008	橡胶垫圈 8.2	WASHER 8.2	4
57	10058866	激光管罩壳		1
58				
59				
60				

# 17. 激光部件 (2)



## 激光部件 (2)

## WIPER MECHANISM COMPONENTS

序号 No.	件号 Part No.	名称	DESCRIPTION	数量 Qty
1	10058818	水冷机		1
2	10003093	螺钉 M8 L=20	SCREW M8 L=20	2
3	10002986	垫圈 8	WASHER 8	2
4	10059413	水箱安装角铁		1
5	10012318	垫圈 5	WASHER 5	3
6	10003141	螺钉 M5 L=20	SCREW M5 L=20	3
7	20023543	过滤毡压板		1
8	10001096	磁铁		6
9	10061228	过滤毡固定架		1
10	10056112	肘夹头		1
11	10001239	螺钉 M4 L=8	SCREW M4 L=8	4
12	10058817	激光管电源		1
13	10009103	螺钉 M4 L=16	SCREW M4 L=16	4
14	10002954	垫圈 4	WASHER 4	4
15	10024992	转接板支柱		4
16	10006283	螺钉 M8 L=35	SCREW M8 L=35	4
17	10061226	过滤器箱		1
18	10062075	烟雾过滤装置罩壳前盖_大风量		1
19	10003101	螺钉 M5 L=8	SCREW M5 L=8	4
20	10002948	垫圈 8	WASHER 8	4
21	10002986	弹簧垫圈 8	SPRING WASHER 8	4
22	10003131	螺母 M8	NUT M8	4
23				
24				
25				
26				
27				
28				
29				
30				