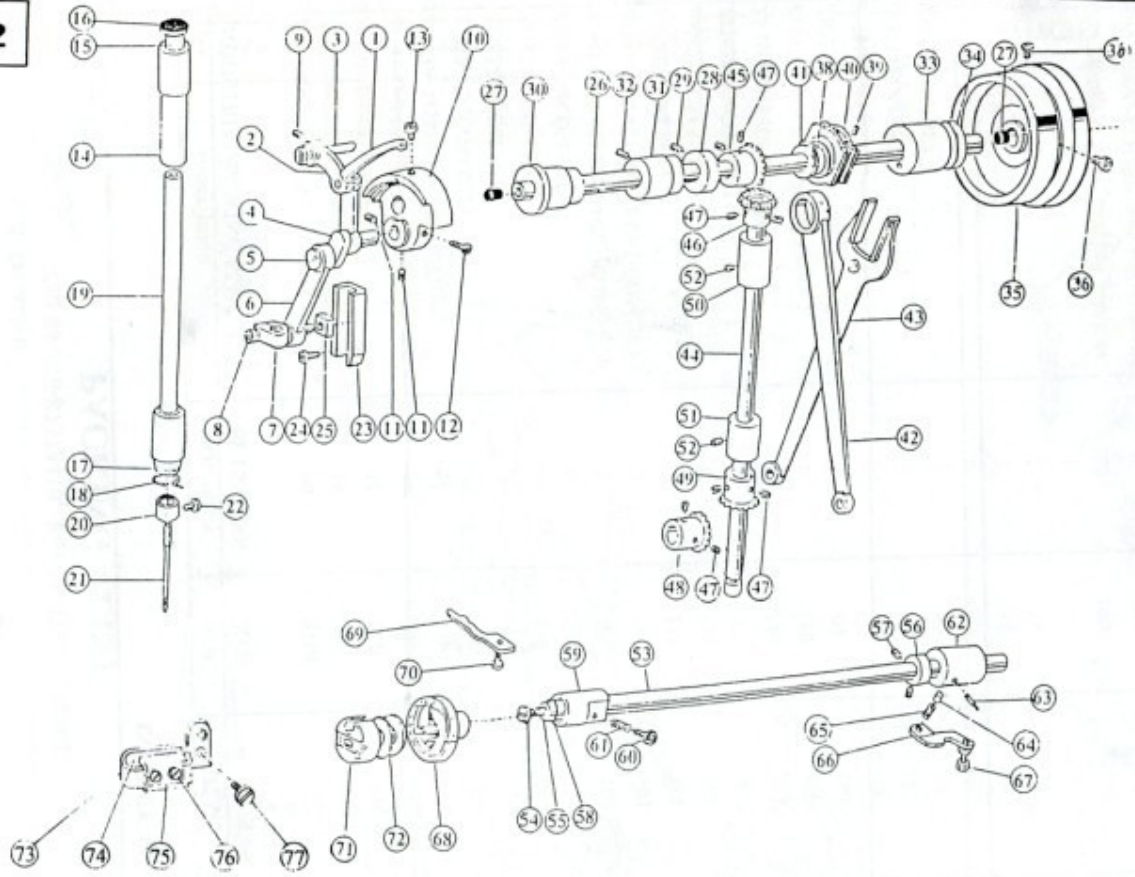


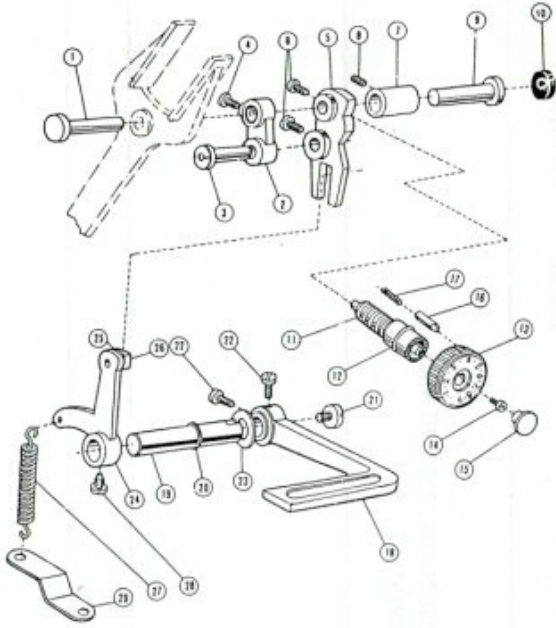
1.ARM BED AND ITS ACCESSORIES

2



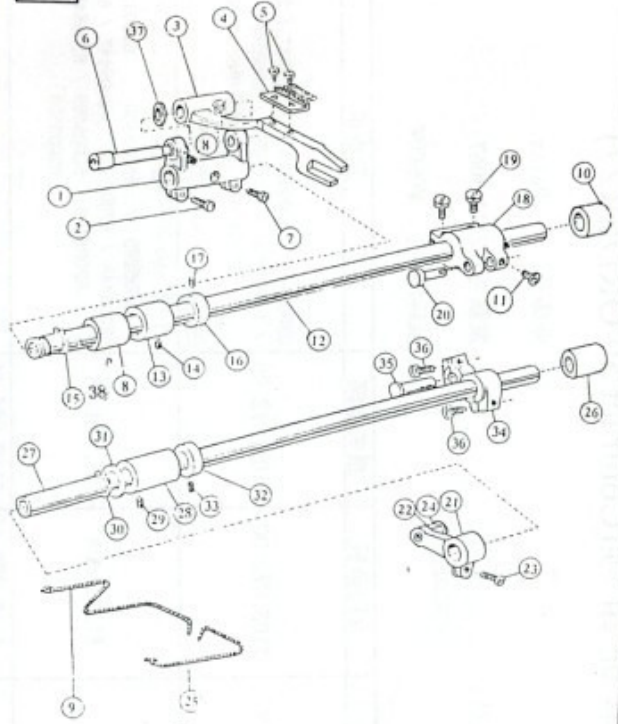
2. NEEDLE BAR AND TAKE-UP, ARM SHAFT AND VERTICAL SHAFT MECHANISM

3



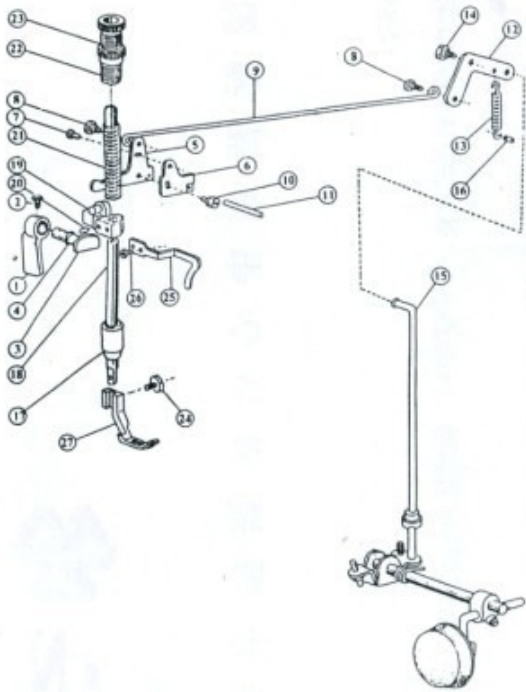
3. STITCH LENGTH REGULATING MECHANISM

4



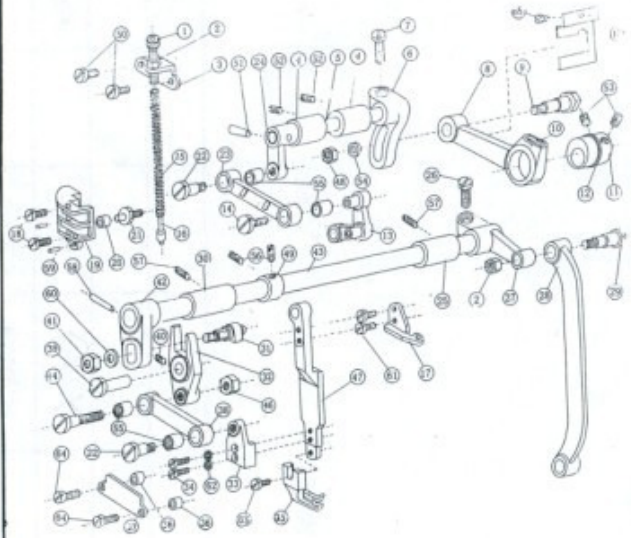
4. FEEDING AND FEED LIFTING MECHANISM

5



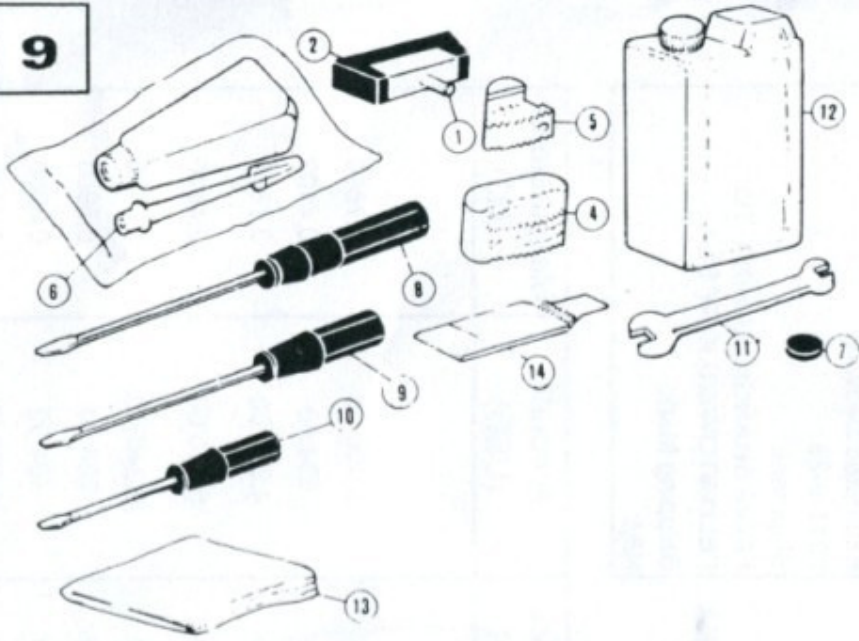
5. PRESSER FOOT MECHANISM

6

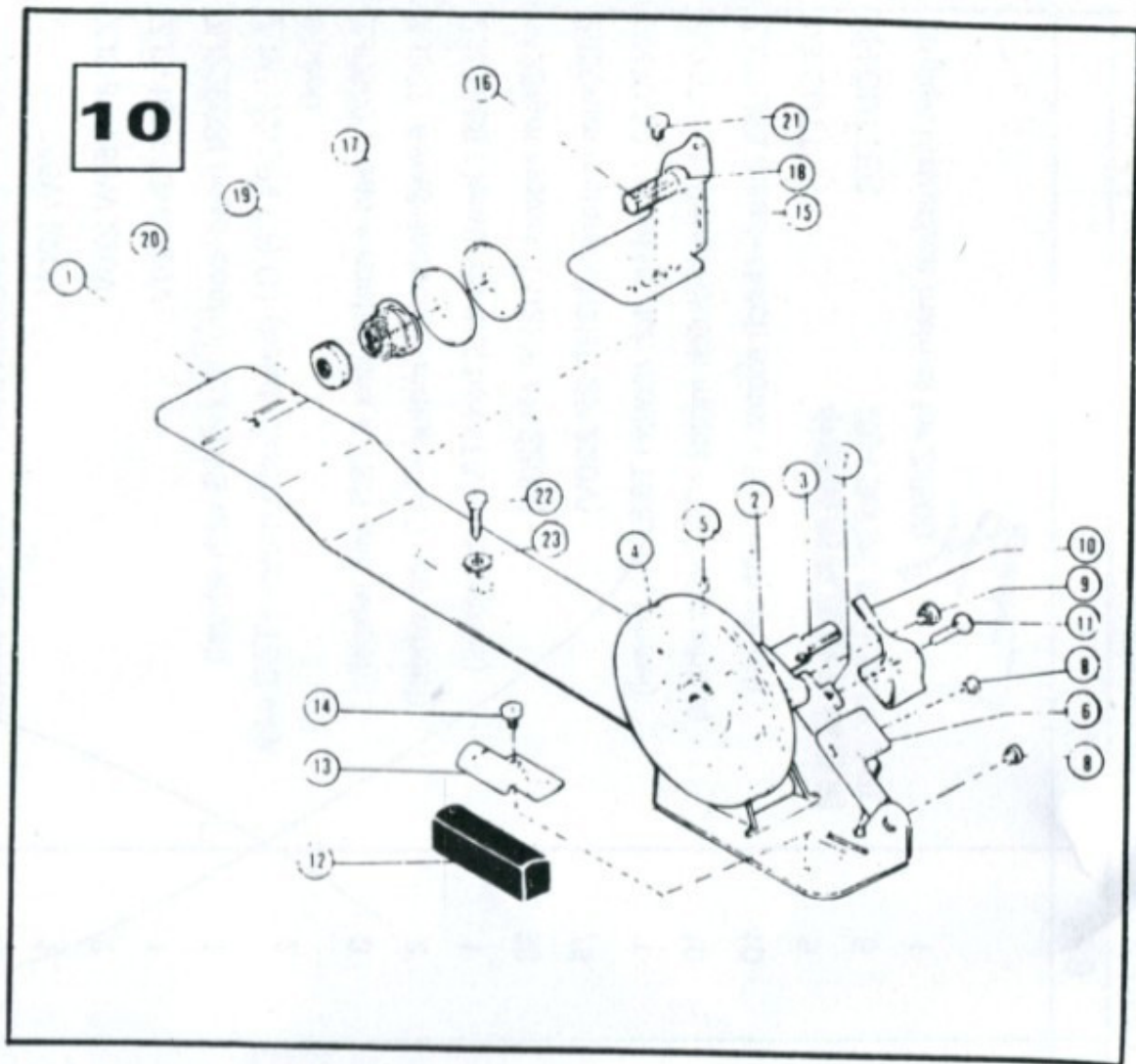


6. PRESSER LIFTING, FEEDING MECHANISM

9



9. OTHER ACCESSORIES



10. BOBBIN WINDER MECHANISM

LARM BED AND ITS ACCESSORIES

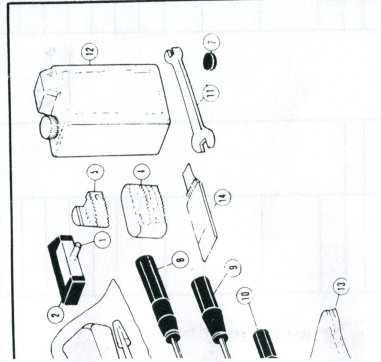
No.	Ref. No.	Description	Pcs.	Remarks
1	Z102-01-001A	Arm	1	
2	Z102-01-001	Trade mark plate	1	
3	GB827-86	Trade mark plate rivet	4	2.5 X 5
4	GB937-76	Spring washer	2	6
5	Z102-01-003	Face plate	1	
6	Z102-01-004	Rubber plug (φ 11.8)	1	
6	Z102-01-004C	Rubber plug (φ 11.8)	1	
6	Z102-01-004C	Rubber plug (φ 11.8)	1	
7	Z102-01-004C	Rubber plug (φ 11.8)	1	
7	Z102-01-004C	Rubber plug (φ 11.8)	1	
8	Z102-01-004C	Rubber plug (φ 11.8)	1	
8	Z102-01-004C	Rubber plug (φ 11.8)	1	
9	Z102-01-004C	Rubber plug (φ 11.8)	1	
9	Z102-01-004C	Rubber plug (φ 11.8)	1	
10	Z102-01-004	Arm side cover(left)	1	SM9/64"(3.57)×40/6
11	Z102-01-002	Arm side cover(right)	1	SM11/64"(4.37)×40/20
12	Z103-01-003	Gasket for arm side cover	1	
13	Z103-01-003	Gasket for arm side cover	1	
14	Z103-01-003	Gasket for arm side cover	1	
15	Z103-01-003	Gasket for arm side cover	1	
16	Z103-01-003	Gasket for arm side cover	1	SM11/64"(4.37)×40/9
17	Z103-01-003	Gasket for arm side cover	1	
18	Z103-01-003	Gasket for arm side cover	1	
19	Z103-01-003	Gasket for arm side cover	1	
20	Z103-01-003	Gasket for arm side cover	1	
21	Z103-01-003	Gasket for arm side cover	1	
22	Z103-01-003	Gasket for arm side cover	1	
23	Z103-01-003	Gasket for arm side cover	1	
24	Z103-01-003	Gasket for arm side cover	1	
25	Z103-01-003	Gasket for arm side cover	1	
26	Z103-01-003	Gasket for arm side cover	1	SM11/64"(4.37)×40/5
27	Z103-01-003	Gasket for arm side cover	1	
28	Z103-01-003	Gasket for arm side cover	1	
29	Z103-01-003	Gasket for arm side cover	1	
30	Z103-01-003	Gasket for arm side cover	1	
31	Z103-01-003	Gasket for arm side cover	1	
32	Z103-01-003	Gasket for arm side cover	1	
33	Z103-01-003	Gasket for arm side cover	1	
34	Z103-01-003	Gasket for arm side cover	1	
35	Z103-01-003	Gasket for arm side cover	1	
36	Z103-01-003	Gasket for arm side cover	1	
37	Z103-01-003	Gasket for arm side cover	1	
38	Z103-01-003	Gasket for arm side cover	1	
39	Z103-01-003	Gasket for arm side cover	1	
40	Z103-01-003	Gasket for arm side cover	1	
41	Z103-01-003	Gasket for arm side cover	1	
42	Z103-01-003	Gasket for arm side cover	1	
43	Z103-01-003	Gasket for arm side cover	1	
44	Z103-01-003	Gasket for arm side cover	1	
45	Z103-01-003	Gasket for arm side cover	1	
46	Z103-01-003	Gasket for arm side cover	1	
47	Z103-01-003	Gasket for arm side cover	1	
48	Z103-01-003	Gasket for arm side cover	1	
49	Z103-01-003	Gasket for arm side cover	1	
50	Z103-01-003	Gasket for arm side cover	1	
51	Z103-01-003	Gasket for arm side cover	1	
52	Z103-01-003	Gasket for arm side cover	1	
53	Z103-01-003	Gasket for arm side cover	1	
54	Z103-01-003	Gasket for arm side cover	1	
55	Z103-01-003	Gasket for arm side cover	1	
56	Z103-01-003	Gasket for arm side cover	1	

2. NEEDLE BAR AND TAKE-UP. AR

No.	Ref. No.	Description	Pcs.	Remarks
1	11H2-001A1	Thread take-up lever	1	
2	11H2-001A1	Thread take-up lever link	1	
3	22T2-001A3	Hinge pin	1	
4	22T2-001A5	Thread take-up crank	1	
5	22T2-001A6	Needle bearing	1	
6	22T2-001A3	Set screw(left hand)	1	
7	22T2-001A8	Needle bar link	1	
8	22T1-001A9	Needle bar adaptor	1	
9	22T2-002	Set screw	1	
10	22T2-00481	Needle bar crank	1	
11	22T2-00482	Needle bar crank	1	
12	22T2-006	Set screw	1	
13	22T2-007	Set screw	1	
14	22T2-008	Needle bar bushing (upper)	1	
15	22T2-010	Felt plug	1	
16	22T2-005	Staple gun	1	
17	22T2-001A2	Rubber plug	1	
18	22T2-006	Needle bar bushing(lower)	1	
19	Z102-02-001	Lower thread guide	1	
20	22T2-003	Needle bar	1	
21	22T2-007	Thread guide for needle bar	1	
22	22T2-017	Needle clamp screw	1	
23	22T2-018	Guide for slide block	1	
24	22T2-019	Set screw	1	
25	22T2-020	Slide block	1	
26	22T2-001A1	Arm shaft	1	
27	22T2-001A2	Rubber plug (φ 7.4 X 10)	1	
28	22T2-005B1	Collar for arm shaft	1	
29	22T2-002B2	Set screw	1	
30	22T2-003	Arm shaft bushing(left)	1	
31	22T2-004	Arm shaft bushing (middle)	1	
32	22T2-002	Set screw	1	
33	22T2-005	Arm shaft bushing(right)	1	
34	22T2-006F	Oil seal	1	
35	Z102-03-001	Balance wheel	1	
36	22T2-007C2	Set screw	1	
37	22T2-008	Set screw	1	
38	11H1-002B1a1	Feed and feed lifting eccentric	1	

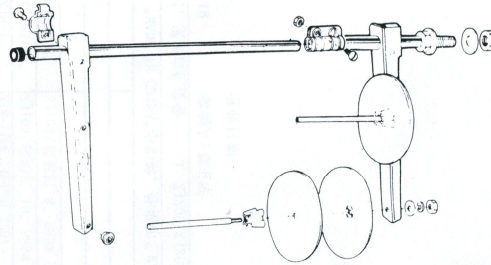
ZOJE SEWING MACHINE CO.

No.	Description	Pcs.	Remarks
1	pin for knee lifter	1	
1	lifter lifting rod	1	
2	lifter stop bracket	2	SM15/64"(5.95)×28/28
2	nut	2	
3	lifter bell crank	1	
4	set for knee lifter plate	1	SM15/64"(5.95)×18/16
1	lifter plate	1	
1	set for knee lifter plate	1	SM15/64"(5.95)×28/8
1	cover bracket	1	
1	cover plate	1	
3	* ring	3	SM11/64"(4.37)×40/9
3	* ring	3	SM15/64"(5.95)×28/8
1	ring	1	



No.	Description	Pcs.	Remarks
2	ing of machine head	2	
2	ubber socket for hinge	2	
2	ubber cushion(big)	2	
2	ubber cushion(small)	2	
1	lifter	1	
1	lignnet	1	
1	crew driver(long)	1	
1	crew driver(medium)	1	
1	crew driver(short)	1	
1	ouble-end wrench	1	
1	oil container	1	
1	oil cover	1	
4	needle	4	

11



No.	Description	Pcs.	Remarks
1	Staff for bobbin winder arm	1	
1	Spring	1	
3	22T9-006D4	3	
4	22T9-006D5	4	
5	22T9-006D6	5	
6	22T9-006D7	6	
7	22T9-006D8	7	
8	22T9-006D9	8	
9	22T9-006D10	9	
10	22T9-006D11	10	
11	22T9-006D12	11	
12	22T9-006D13	12	
13	22T9-006D14	13	
14	22T9-006D15	14	
15	22T9-006D16	15	
16	22T9-006D17	16	
17	22T9-006D18	17	
18	22T9-006D19	18	
19	22T9-006D20	19	
20	22T9-006D21	20	
21	22T9-006D22	21	
22	22T9-006D23	22	
23	Wood screw	23	
23	Washer	23	

2. NEEDLE BAR AND TAKE-UP, ARM SHAFT AND VERTICAL SHAFT MECHANISM

No.	Ref. No.	Description	Pcs.	Remarks	No.	Ref. No.	Description	Pcs.	Remarks
1	11H2-001A1a1	Thread take-up lever	1		39	72T3-005D1a3	Set screw	2	SM15/64"(5.95)×28/
2	11H2-001A1b1	Thread take-up lever link	1		40	72T3-005D1a2	Eccentric sleeve	1	
3	22T2-001A3	Hinge pin	1		41	22T3-009D1b	Retaining ring	1	
4	73T2-001A1	Thread take-up crank	1		42	22T3-009D1c	Crank rod for feed lifting rock	1	
4	22T2-001A5	Needle bearing	2		43	ZJ03-03-001	Feed forked connection	1	
5	22T2-001A6	Set screw(left handed)	1		44	11H3-003	Vertical shaft	1	
6	72T2-001A3	Needle bar link	1		45	22T3-010E2a1-2	Bevel gear for arm shaft	1	Z=27
7	22T2-001A8	Needle bar adaptor	1		46	22T3-010E2a2-2	Bevel gear for vertical shaft	1	Z=18
8	22T1-001A9	Set screw	1	SM9/64"(3.57)×40/6	47	22T2-005B3	Set screw	8	SM1/4"(6.35)×40/7
9	22T2-002	Set screw	1	SM15/64"(5.95)×28/10	48	22T3-010E2b1-2	Bevel gear for hook shaft	1	Z=21
10	72T2-004B1	Needle bar crank	1		49	22T3-010E2b2-2	Bevel gear for vertical shaft	1	Z=28
11	72T2-004B2	Set screw	2	SM1/4"(6.35)×40/6	50	22T3-011	Vertical shaft bushing(upper)	1	
12	22T2-006	Set screw	1	SM9/32"(7.14)×28/13	51	74T3-001	Vertical shaft bushing(lower)	1	
13	22T2-007	Set screw	1	SM9/32"(7.14)×28/14	52	22T2-002	Set screw	2	SM15/64"(5.95)×28/1
14	22T2-008	Needle bar bushing (upper)	1		53	74T4-001A1	Rotating hook shaft	1	
15	22T2-010	Felt plug	1		54	22T4-001A1a1	Filter screw	1	
16	72T2-005	Rubber plug	1	φ 8.8	55	22T4-001A1a2	Filter	1	
17	83T1-001A2	Needle bar bushing(lower)	1		56	72T4-002B1	Collar for hook shaft	1	GC6-1
18	73T2-006	Lower thread guide	1		57	72T4-002B2	Set screw	2	SM15/64"(5.95)×28/4
19	ZJ02-02-001	Needle bar	1		58	22T4-003G	Oil seal for rotating hook shaft	1	
20	73T2-003	Thread guide for needle bar	1		59	22T4-004	Hook shaft bushing(left)	1	
21		Needle	1	DP×17#22	60	72T4-003	Oil adjusting screw	1	
22	22T2-017	Needle clamp screw	1	SM1/8"(3.18)×44/4.5	61	22T4-006	Spring for oil adjuster	1	
23	22T2-018	Guide for slide block	1		62	72T4-008C	Hook shaft bushing(right)	1	
24	22T2-019	Set screw	2	SM11/64"(4.37)×40/8	63	22T4-007C2	Oil pipe for hook shaft bus	1	
25	22T2-020	Slide block	1		64	72T4-010	Plunger	1	
26	72T3-001A1	Arm shaft	1		65	72T4-011	Plunger spring	1	
27	22T3-001A2	Rubber plug(φ 7.4×10)	2		66	74T4-002	Guide plate	1	
28	22T6-005B1	Collar for arm shaft	1		67	22T5-001A4	Screw	1	SM15/64"(5.95)×28/10
29	22T3-002B2	Set screw	2	SM1/4"(6.35)×40/4	68	11H4-002B	Rotating hook complete	1	
30	22T3-003	Arm shaft bushing(left)	1		69	74T4-004	Rotating hook positioner	1	
31	22T3-004	Arm shaft bushing (middle)	1		70	22T4-015	Set screw	1	SM11/64"(4.37)×40/10
32	22T2-002	Set screw	1	SM15/64"(5.95)×28/10	71	74T4-005C	Bobbin case	1	
33	22T3-005	Arm shaft bushing(right)	1		72	11H4-001	Bobbin	1	
34	22T3-006F	Oil seal	1		73	ZJ03-02-001A1	Thread guide bracket	1	
35	ZJ02-03-001	Balance wheel	1		74	ZJ03-02-001A3	Felt	1	
36	22T3-007C2	Set screw	2		75	ZJ03-02-001A2	Thread guide plate	1	
37	22T3-008	Set screw	1	SM11/32"(8.73)×28/10	76	22T1-021G3	Set screw	2	SM3/32"(2.38)×56/2.2
38	11H3-002B1a1	Feed and feed lifting eccentric	1		77	73T2-007	Set screw	1	SM9/64"(3.57)×40/5

3. STITCH LENGTH REGULATING MECHANISM

No.	Ref. No.	Description	Pcs.	Remarks
1	22T5-001A1	Hinge pin	1	
2	22T5-001A2	Feed connecting link	1	
3	22T5-001A3	Hinge pin for feed connecting link	1	
4	22T5-001A4	Set screw	1	SM15/64"(5.95)×28/10
5	73T5-002B1	Feed regulator	1	
6	22T5-001A4	Set screw	2	SM15/64"(5.95)×28/10
7	72T5-002	Feed regulator bushing	1	
8	22T2-002	Set screw	1	SM15/64"(5.95)×28/10
9	22T5-004	Hinge pin for feed regulator	1	
10	72T5-003	Rubber plug(φ20×4)	1	
11	73T5-003C1	Feed regulator screw bar	1	
12	22T5-006C4	O-ring	2	φ14×2.4
13	ZJ03—05—001	Dial	1	
14	22T5-006C3	Screw	1	SM3/16"(4.76)×28/8
15	72T5-005	Rubber plug	1	
16	22T5-008	Stopper pin	1	
17	22T5-009	Spring for stopper pin	1	
18	72T5-006C1	Reverse feed lever	1	
19	22T5-010D2a	Reverse feed lever shaft	1	
20	22T5-010D2b	O-ring	1	φ9×1.9
21	22T5-010D3	Screw	1	SM3/16"(4.76)×28/6.5
22	22T5-001A4	Screw	2	SM15/64"(5.95)×28/10
23	22T5-011	Washer	1	
24	22T5-012E1	Reverse feed crank	1	
25	22T5-012E1a1	Slide block pin	1	
26	22T5-012E1a2	Slide block	1	
27	ZJ02—05—002	Spring for reverse feed crank	1	
28	22T5-013	Screw	1	SM15/64"(5.95)×28/14
29	22T5-014	Bracket for spring	1	

4. FEEDING AND FEED LIFTING MECHANISM

No.	Ref. No.	Description	Pcs.	Remarks
1	22T6-001A1a	Feed rock shaft crank	1	
2	72T6-001A6	Screw	2	SM3/16"
3	20H11-001B1	Feed bar	1	
4	11H6-011-B2C2	Feed dog	1	
5	22T6-001A4	Screw	2	SM1/8"
6	11H6-004	Shaft for feed bar	1	
7	22T2-019	Screw	1	SM11/16"
8	11H6-007	Bushing for feed rock shaft(left)	1	
9	72T6-001A5	Oil braid	1	φ2.5×
10	11H6-006	Bushing for feed rock shaft(right)	1	
11	22T5-001A4	Screw	1	SM15/16"
12	11H6-001	Feed rock shaft	1	
13	11H6-008	Bushing for feed rock shaft	1	
14	72T4-002B2	Screw	1	SM15/16"
15	GB894-76	C-type stop ring	1	
16	22T6-005B1	Collar	1	
17	22T3-002B2	Screw	2	SM1/4"
18	ZJ03-06-001	Feed rock shaft crank	1	
19	22T6-001A1b	Screw	2	SM3/16"
20	ZJ03—06—002	Hinge pin	1	
21	72T6-002B1a	Feed lifting rock shaft crank(left)	1	
22	72T6-002B1b	Hinge pin	1	
23	22T6-008D3	Screw	1	SM11/16"
24	72T6-007D1a	Feed lifting connection sleeve	1	
25	72T6-002B4	Oil braid	1	φ2.5×
26	11H6-010	Bushing for feed lifting rock shaft	1	
27	54T6-002	Feed rock lifting shaft	1	
28	22T6-012	Bushing for feed lifting rock shaft	1	
29	22T2-002	Screw	1	SM15/16"
30	GB894-76	C-type stop ring	1	15
31	22T6-013	Washer	1	
32	22T6-005B1	Collar for feed lifting rock shaft	1	
33	22T3-002B2	Screw	2	SM1/4"
34	72T6-003C1	Feed lifting rock shaft crank(right)	1	
35	22T6-007	Hinge pin	1	
36	22T6-001A1b	Screw	2	SM3/16"
37	22T6-001A6	Washer	1	
38	72T4-002B2	Screw	1	SM15/16"

MECHANISM

Pcs.	Remarks
1	
1	
1	
1	SM15/64"(5.95)×28/10
1	
2	SM15/64"(5.95)×28/10
1	
1	SM15/64"(5.95)×28/10
1	
2	φ 14×2.4
1	
1	SM3/16"(4.76)×28/8
1	
1	
1	φ 9×1.9
1	SM3/16"(4.76)×28/6.5
1	SM15/64"(5.95)×28/10
1	
1	
1	SM15/64"(5.95)×28/14

4.FEEDING AND FEED LIFTING MECHANISM

No.	Ref. No.	Description	Pcs.	Remarks
1	22T6-001A1a	Feed rock shaft crank	1	
2	72T6-001A6	Screw	2	SM3/16"(4.76)×28/15
3	20H11-001B1	Feed bar	1	
4	11H6-011-B2C2	Feed dog	1	
5	22T6-001A4	Screw	2	SM1/8"(3.18)×44/6
6	11H6-004	Shaft for feed bar	1	
7	22T2-019	Screw	1	SM11/64"(4.37)×40/8
8	11H6-007	Bushing for feed rock shaft(left)	1	
9	72T6-001A5	Oil braid	1	φ 2.5×315
10	11H6-00b	Bushing for feed rock shaft(right)	1	
11	22T5-001A4	Screw	1	SM15/64"(5.95)×28/10
12	11H6-001	Feed rock shaft	1	
13	11H6-008	Bushing for feed rock shaft	1	
14	72T4-002B2	Screw	1	SM15/64"(5.95)×28/4.5
15	GB894-76	C-type stop ring	1	
16	22T6-005B1	Collar	1	
17	22T3-002B2	Screw	2	SM1/4"(6.35)×40/4
18	ZJ03-06-001	Feed rock shaft crank	1	
19	22T6-001A1b	Screw	2	SM3/16"(4.76)×28/12
20	ZJ03-06-002	Hinge pin	1	
21	72T6-002B1a	Feed lifting rock shaft crank(left)	1	
22	72T6-002B1b	Hinge pin	1	
23	22T6-008D3	Screw	1	SM11/64"(4.37)×40/12
24	72T6-007D1a	Feed lifting connection sleeve	1	
25	72T6-002B4	Oil braid	1	φ 2.5×265
26	11H6-010	Bushing for feed lifting rock shaft	1	
27	54T6-002	Feed rock lifting shaft	1	
28	22T6-012	Bushing for feed lifting rock shaft	1	
29	22T2-002	Screw	1	SM15/64"(5.95)×28/10
30	GB894-76	C-type stop ring	1	15
31	22T6-013	Washer	1	
32	22T6-005B1	Collar for feed lifting rock shaft	1	
33	22T3-002B2	Screw	2	SM1/4"(6.35)×40/4
34	72T6-003C1	Feed lifting rock shaft crank(right)	1	
35	22T6-007	Hinge pin	1	
36	22T6-001A1b	Screw	2	SM3/16"(4.76)×28/12
37	22T6-001A6	Washer	1	
38	72T4-002B2	Screw	1	SM15/64"(5.95)×26/4.5

5.PRESSER FOOT MECHANISM

No	Ref. No.	Description	Pcs.	Remarks
1	ZJ02-07-001A1	Presser bar lifter	1	
2	22T1-011	Set screw	1	SM11/64"(4.37)×40/5
3	ZJ02-07-001B1	Presser bar lifter cam	1	
4	72T7-008	Oil seal for press bar lifter cam	1	φ 8 × 1.9
5	22T7-004B1a	Knee lifter lever(left)	1	
6	72T7-002B1-1	Tension releasing cam	1	
7	22T7-004B1c	Screw	1	SM11/64"(4.37)×40/6
8	22T7-004B2	Hinged screw	2	SM3/16"(4.76)×28/3.5
9	22T7-004B3	Knee lifter rod	1	
10	22T7-005	Bolt	1	SM15/64"(5.95)×28/13
11	22T7-006	Tension releasing pin	1	
12	22T7-007C1	Knee lifter lever(right)	1	
13	22T7-007C2	Spring	1	
14	22T7-005	Bolt for knee lifter lever	1	SM15/64"(5.95)×28/10
15	72T7-003C1	Knee lifter connecting rod	1	
16	22T7-008	Pin for spring	1	
17	72T7-009	Presser bar bushing	1	
18	20H8-001	Presser bar	1	
19	ZJ02-07-004A	Presser bar lifting bracket	1	
20	72T3-005D1a3	Set screw	1	SM15/64"(5.95)×28/7
21	11H7-002	Presser bar spring	1	
22	20H8-002A	Pressure regulating thumb screw	1	
23	22T7-014E2	Lock nut	1	
24	22T7-015	Set screw	1	SM9/64"(3.57)×40/11
25	72T7-012	Upper thread guide	1	
26	22T2-004	Screw	1	SM11/64"(4.37)×40/7
27	ZJ02-07-006	inner presser	1	

6.PRESSER LIFTING、FEEDING MECH

No.	Ref. No.	Description	Pc
1	ZJ02-08-001	lifting presser adjusting screw	1
2	ZJ02-08-002	lifting presser adjusting nut	2
3	ZJ02-08-003	lifting presser bracket for spring	1
4	ZJ02-08-004	Presser lifting shaft bushing	2
5	ZJ02-08-005	Presser lifting shaft	1
6	ZJ02-08-006	Adjusting crank for eccentric wheel rod	1
7	ZJ02-08-007	Set screw	1
8	ZJ02-08-008	Eccentric wheel rod	1
9	ZJ02-08-009	Set screw	1
10	ZJ02-08-010A1	Oil felt clamp	1
11	ZJ02-08-011	Eccentric wheel	1
12	ZJ02-08-012	Washer	2
13	ZJ02-08-013	Presser feed crank	1
14	ZJ02-08-014	Screw	1
15	ZJ02-08-015	lifting presser spring	1
16	ZJ02-08-016B	Presser spring guide	1
17	ZJ02-08-017	lifting presser guide plate	1
18	ZJ02-08-018	Screw	2
19	ZJ02-08-019	lifting presser plate	1
20	ZJ02-08-020	Lifting presser spring guide pin	1
21	ZJ02-08-021	Feed crank guide shaft	1
22	ZJ02-08-022	Screw	2
23	ZJ02-08-023	Presser feed crank link	1
24	ZJ02-08-024	Presser lifting crank	1
25	ZJ02-08-025	Presser swing shaft bushing(right)	1
26	ZJ02-08-026	Screw	1
27	ZJ02-08-027	Presser swing crank(right)	1
28	ZJ02-08-028	Presser swing crank(right) rod	1
29	ZJ02-08-029	Screw	1
30	ZJ02-08-030	Presser swing shaft bushing(left)	1
31	ZJ02-08-031C	Lifting presser sway crank shaft complete	1
32	ZJ02-08-032	Lifting presser sway crank	1
33	ZJ02-08-033	Presser rod guide	1
34	ZJ02-08-034	Screw	2
35	ZJ02-08-035	Out presser	1
36	ZJ02-08-036	Space for presser rod plate	2
37	ZJ02-08-037	Lifting presser rod plate	1
38	ZJ02-08-038	Presser swing crank link	1
39	ZJ02-08-039	Lifting presser sawy crank guide pin	1
40	ZJ02-08-040	Screw	1
41	ZJ02-08-041	Presser crank connecting nut	1
42	ZJ02-08-042	Presser swing crank(left)	1
43	ZJ02-08-043	Presser swing shaft	1
44	ZJ02-08-044	Screw	1
45	ZJ02-08-045	Oil seal plate	1
46	ZJ02-08-046	Lock nut	1
47	ZJ02-08-047	Presser rod	1
48	ZJ02-08-048	Nut	1
49	22T6-005B1	Collar for presser swing shaft	1
50	72T2-003	Screw	2
51	GB117-76	pin	1
52	22T1-011	Screw	2
53	72T2-004B2	Screw	2
54	GB97-76	Washer	1
55	22T2-001A5	Needle bearing	4
56	22T3-002B2	Screw	2
57	22T1-011	Screw	2
58	GB117-76	pin	1
59	GB879-86	pin	2
60	22T8-005	Washer	1
61	22T7-015	Screw	2
62	22T8-005	Washer	1
63	22T7-015	Screw	1
64	22T6-008D3	Screw	2
65	22T2-004	Screw	1

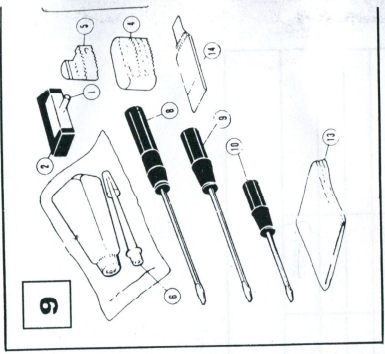
6.PRESSER LIFTING、FEEDING MECHANISM

No.	Ref. No.	Description	Pcs.	Remarks
1	ZJ02-08-001	lifting presser adjusting screw	1	20H9-007A
2	ZJ02-08-002	lifting presser adjusting nut	2	20H9-007B
3	ZJ02-08-003	lifting presser bracket for spring	1	20H9-006
4	ZJ02-08-004	Presser lifting shaft bushing	2	
5	ZJ02-08-005	Presser lifting shaft	1	
6	ZJ02-08-006	Adjusting crank for eccentric wheel rod	1	
7	ZJ02-08-007	Set screw	1	SM1/4"(6.35)×24/16
8	ZJ02-08-008	Eccentric wheel rod	1	21H8-001A
9	ZJ02-08-009	Set screw	1	
10	ZJ02-08-010A1	Oil felt clamp	1	
11	ZJ02-08-011	Eccentric wheel	1	20H9-011A2
12	ZJ02-08-012	Washer	2	20H9-010A
13	ZJ02-08-013	Presser feed crank	1	
14	ZJ02-08-014	Screw	1	SM3/16"(4.76)×28/10
15	ZJ02-08-015	lifting presser spring	1	20H9-005
16	ZJ02-08-016B	Presser spring guide	1	20H9-004B
17	ZJ02-08-017	lifting presser guide plate	1	20H9-001A8
18	ZJ02-08-018	Screw	2	72T2-003
19	ZJ02-08-019	lifting presser plate	1	20H9-002
20	ZJ02-08-020	Lifting presser spring guide pin	1	20H9-003
21	ZJ02-08-021	Feed crank guide shaft	1	20H9-001A5
22	ZJ02-08-022	Screw	2	
23	ZJ02-08-023	Presser feed crank link	1	
24	ZJ02-08-024	Presser lifting crank	1	
25	ZJ02-08-025	Presser swing shaft bushing(right)	1	20H1-006B
26	ZJ02-08-026	Screw	1	21H13-009A2
27	ZJ02-08-027	Presser swing crank(right)	1	
28	ZJ02-08-028	Presser swing crank(right) rod	1	21H8-003
29	ZJ02-08-029	Screw	1	20H13-009B
30	ZJ02-08-030	Presser swing shaft bushing(left)	1	21H8-006
31	ZJ02-08-031C	Lifting presser sway crank shaft complete	1	20H13-010A1
32	ZJ02-08-032	Lifting presser sway crank	1	
33	ZJ02-08-033	Presser rod guide	1	20H9-001B1
34	ZJ02-08-034	Screw	2	SM9/64"(3.57)×40/8
35	ZJ02-08-035	Out presser	1	
36	ZJ02-08-036	Space for presser rod plate	2	20H13-004
37	ZJ02-08-037	Lifting presser rod plate	1	20H13-003
38	ZJ02-08-038	Presser swing crank link	1	
39	ZJ02-08-039	Lifting presser sawy crank guide pin	1	20H13-010B
40	ZJ02-08-040	Screw	1	SM3/16"(4.76)×32/7
41	ZJ02-08-041	Presser crank connecting nut	1	SM1/4"(6.35)×28
42	ZJ02-08-042	Presser swing crank(left)	1	
43	ZJ02-08-043	Presser swing shaft	1	20H13-006B
44	ZJ02-08-044	Screw	1	
45	ZJ02-08-045	Oil seal plate	1	21H8-005
46	ZJ02-08-046	Lock nut	1	SM1/4"(6.35)×40
47	ZJ02-08-047	Presser rod	1	20H9-001A4
48	ZJ02-08-048	Nut	1	SM15/64"(3.95)×28
49	22T6-005B1	Collar for presser swing shaft	1	
50	72T2-003	Screw	2	SM11/64"(4.37)×40/8
51	GB117-76	pin	1	
52	22T1-011	Screw	2	SM11/64"(4.37)×40/5.5
53	72T2-004B2	Screw	2	SM1/4"(6.35)×40/7
54	GB97-76	Washer	1	
55	22T2-001A5	Needle bearing	4	
56	22T3-002B2	Screw	2	SM1/4"(6.35)×40/4
57	22T1-011	Screw	2	SM11/64"(4.37)×40/5.5
58	GB117-76	pin	1	
59	GB879-86	pin	2	
60	22T8-005	Washer	1	
61	22T7-015	Screw	2	SM9/64"(3.57)×40/11
62	22T8-005	Washer	1	
63	22T7-015	Screw	1	SM9/64"(3.57)×40/11
64	22T6-008D3	Screw	2	SM11/64"(4.37)×40/12
65	22T2-004	Screw	1	SM11/64"(4.37)×40/5.5

7.LUBRICATION MECHANISM

No.	Ref. No.	Description	Pcs.
1	ZJ03-09-001	Oil pump body	1
2	11H8-003	Oil pump body plate	1
3	72T2-003	Screw	3 S
4	ZJ03-09-002	Oil pump shaft	1
5	ZJ03-09-003	Oil pump pin guide plate	1
6		Inner gear	1
7		Gear	1
8	22T1-007	Washer	3
9	72T2-003	Screw	3 S
10	ZJ03-09-004A	Oil braid fitting plate	1 2
11	22T7-015	Screw	2 S1
12	11H8-006A	Oil pipe for arm shaft	1
13	72T8-002B1	Oil return pipe	1 φ
14	22T8-015	Felt pouch	1
15	72T8-006	Pipe hold	1
16	22T8-010B	Oil pipe for hook shaft	1
17	11H8-008B	Oil pump screen complete	1
18	11H8-010	Screw	3 S1

11	Z279-003B1	Knee lifter lifting rod	1	
12	Z279-003B2	Knee lifter bell crank	1	
13	Z279-003B3	Joint for knee lifter bell crank	1	
14	Z279-018	Set screw	2	
15	Z279-003B6	Bracket for knee lifter plate	1	
16	Z279-003B5	Knee lifter plate	1	
17	Z279-003B7	Set screw	1	
18	Z279-003B8	Pad for knee lifter plate	1	
19	Z279-004C1	Belt cover bracket	1	
20	Z279-004C2	Belt cover plate	1	
21	Z279-017	Screw	3	
22	Z279-028	Screw	3	
23	GB896-76	Stopping	1	

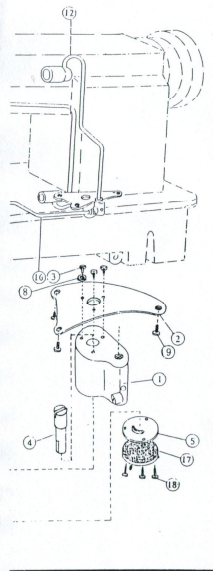


9. OTHER ACCESSORIES

No.	Ref. No.	Description	Pcs.
1	Z279-007F1	Hinge of machine head	2
2	Z279-004C1	Rubber socket for hinge	2
4	Z279-005	Rubber cushion(big)	2
5	Z279-006	Rubber cushion(small)	2
6	Z279-011	Oiler	1
7	Z279-012	Magnet	1
8	Z279-007	Screw driver(long)	1
9	Z279-020	Screw driver(medium)	1
10	Z279-021	Screw driver(short)	1
11	Z279-022	Double-end wrench	1
12	Z279-017	Oil container	1
13	Z279-018	Vial cover	1
14	Z279-004	Needle	4

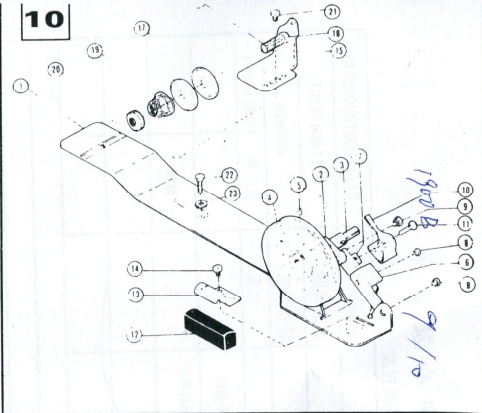
7. LUBRICATION MECHANISM

No.	Ref. No.	Description	Pcs.	Remarks
1	ZJ05-09-001	Oil pump body	1	
2	11H8-003	Oil pump body plate	1	
3	Z1T2-003	Screw	3	SM11/64"(4.37)×40/8
4	ZJ05-09-002	Oil pump shaft	1	
5	ZJ05-09-003	Oil pump pin guide plate	1	
6		Inner gear	1	
7		Gear	1	
8	Z2T1-007	Washer	3	
9	Z2T2-003	Screw	3	SM11/64"(4.37)×40/8
10	ZJ05-09-004A	Oil braid fitting plate	1	21H9-001A
11	Z2T7-015	Screw	2	SM9/64"(3.57)×40/11
12	11H8-006A	Oil pipe for arm shaft	1	
13	Z1T8-002B1	Oil return pipe	1	φ 3 × 650
14	Z2T8-015	Felt pouch	1	
15	Z2T8-006	Pipe hold	1	
16	Z2T8-010B	Oil pipe for hook shaft	1	
17	11H8-008B	Oil pump screen complete	1	
18	11H8-010	Screw	3	SM1/8"(3.18)×44/8



8. OIL RESERVOIR AND OTHER ACCESSORIES

No.	Ref. No.	Description	Pcs.	Remarks
1	Z4T9-001A	Oil reservoir	1	
2	Z2T9-001A2	Oil drain screw	1	SM5/64"(7.94)×28/10
3	Z2T9-001A3	Washer	1	
4	Z2T9-001A4	Gasket for oil reservoir(small)	1	
5	Z2T9-001A5	Gasket for oil reservoir(big)	1	
6	Z2T9-016	Hinge pin for knee lifter	1	
7	Z2T9-001A7	Backspring for knee lifter	1	
8	Z2T9-001A8	Knee lifter stop bracket	1	
9	Z2T9-001A9	Adjusting screw	2	SM15/64"(5.95)×28/28
10	Z2T9-001A10	Lock nut	2	
11	Z2T9-003B1	Knee lifter lifting rod	1	
12	Z2T9-003B2	Knee lifter bell crank	1	
13	Z2T9-003B3	Joint for knee lifter bell crank	1	
14	Z279-018	Set screw	2	SM15/16"(7.94)×18/16
15	Z279-003B6	Bracket for knee lifter plate	1	
16	Z279-003B5	Knee lifter plate	1	
17	Z279-003B7	Set screw	1	SM15/64"(5.95)×28/8
18	Z279-003B8	Pad for knee lifter plate	1	
19	Z279-004C1	Belt cover bracket	1	
20	Z279-004C2	Belt cover plate	1	
21	Z2T1-017	Screw	3	SM11/64"(4.37)×40/9
22	Z279-028	Screw	3	SM15/64"(5.95)×28/8
23	GB896-76	Stopping	1	



10. BOBBIN WINDER MECHANISM

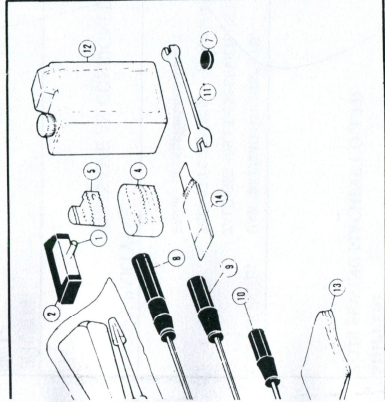
No.	Ref. No.	Description	Pcs.	Remarks
1	Z2T9-006D1	Bobbin winder base	1	
2	Z2T9-006D2	Bobbin winder arm	1	
	Z2T9-006D3	Shaft for bobbin winder arm	1	
	Z2T9-006D4	Spring	1	
3	Z2T9-006D5	Bobbin winder spindle	1	
4	Z2T9-006D6	Bobbin winder pulley	1	
5	Z2T9-006D7	Screw	1	
6	Z2T9-006D8	Bobbin winder stop latch lever	1	
7	Z2T9-006D9	Bobbin winder connecting bar	2	
8	Z2T9-006D10	Rivet	1	
9	Z2T9-006D11	Screw	1	
10	Z2T9-006D12	Bobbin winder stop latch	1	
11	Z2T9-006D13	Adjusting screw	1	
12	Z2T9-006D14	Stopper block	1	
13	Z2T9-006D15	Fixture for stonner block	1	

Pcs.	Remarks
1	
1	
3	SM11/64"(4.37)×40/8

10. BOBBIN WINDER MECHANISM

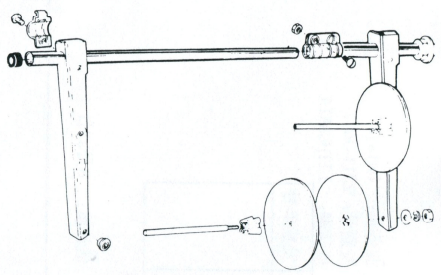
No.	Ref. No.	Description	Pcs.	Remarks
1	22T9-006D1	Bobbin winder base	1	
2	22T9-006D2	Bobbin winder arm	1	
3	22T9-006D3	Shaft for bobbin winder arm	1	
4	22T9-006D4	Spring	1	
5	22T9-006D5	Bobbin winder spindle	1	
6	22T9-006D6	Bobbin winder pulley	1	
7	22T9-006D7	Screw	1	
8	22T9-006D8	Bobbin winder stop latch lever	1	
9	22T9-006D9	Bobbin winder connecting bar	2	
10	22T9-006D10	Rivet	1	
11	22T9-006D11	Screw	1	
12	22T9-006D12	Bobbin winder stop latch	1	
13	22T9-006D13	Adjusting screw	1	
14	22T9-006D14	Stopper block	1	
15	22T9-006D15	Fixture for stopper block	1	
16	22T9-006D16	Set screw	1	
17	22T9-006D17	Bobbin winder tension brack	1	
18	22T9-006D18	Bobbin winder tension stud	1	
19	22T9-006D19	Bobbin winder tension disc	2	
20	22T9-006D20	Tension stud bushing	1	
21	22T9-006D21	Bobbin winder tension spring	1	
22	22T9-006D22	Tension stud nut	1	
23	22T9-006D23	Tension bracket screw	1	
24		Wood screw	2	
25		Washer	2	

Description	Pcs.	Remarks
Oil reservoir	1	
Oil drain screw	1	SM5/64"(7.94)×28/10
Washer	1	
Gasket for oil reservoir(small)	1	
Gasket for oil reservoir(big)	1	
Hinge pin for knee lifter	1	
Backspring for knee lifter	1	
Knee lifter stop bracket	1	
Adjusting screw	2	SM15/64"(5.95)×28/28
Lock nut	2	
Knee lifter lifting rod	1	
Knee lifter belt crank	1	
Joint for knee lifter belt crank	1	
Bracket for knee lifter plate	2	SM15/16"(7.94)×18/16
Knee lifter plate	1	
Set screw	1	SM15/64"(5.95)×28/8
Pad for knee lifter plate	1	
Belt cover bracket	1	
Belt cover plate	3	SM11/64"(4.37)×40/9
Screw	3	SM15/64"(5.95)×28/8
Stopring	1	

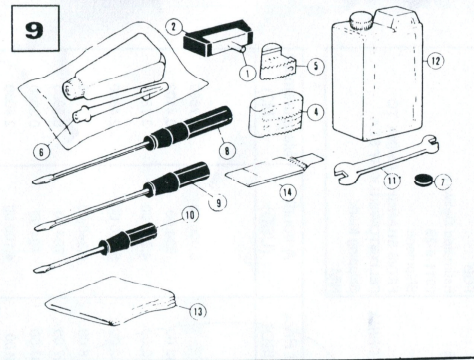


Description	Pcs.	Remarks
Hinge of machine head	2	
Rubber socket for hinge	2	
Rubber cushion(big)	2	
Rubber cushion(small)	2	
Oiler	1	
Magnet	1	
Screw driver(long)	1	
Screw driver(medium)	1	
Screw driver(short)	1	
Double-end wrench	1	
Oil container	1	

11



4	ZJ03-09-002	Oil pump shaft	1	
5	ZJ03-09-003	Oil pump pin guide plate	1	
6		Inner gear	1	
7		Gear	1	
8	22T1-007	Washer	3	
9	72T2-003	Screw	3	SM11/64"(4.37)×40/8
10	ZJ03-09-004A	Oil braid fitting plate	1	21H9-001A
11	22T7-015	Screw	2	SM9/64"(3.57)×40/11
12	11H8-006A	Oil pipe for arm shaft	1	
13	72T8-002B1	Oil return pipe	1	φ 3 × 650
14	22T8-015	Felt pouch	1	
15	72T8-006	Pipe hold	1	
16	22T8-010B	Oil pipe for hook shaft	1	
17	11H8-008B	Oil pump screen complete	1	
18	11H8-010	Screw	3	SM1/8"(3.18)×44/8



9 OTHER ACCESSORIES

No.	Ref. No.	Description	Pcs.	Remarks
1	22T9-007F1	Hinge of machine head	2	
2	72T9-004C1	Rubber socket for hinge	2	
4	72T9-005	Rubber cushion(big)	2	
5	72T9-006	Rubber cushion(small)	2	
6	22T9-011	Oiler	1	
7	22T9-012	Magnet	1	
8	72T9-007	Screw driver(long)	1	
9	72T9-020	Screw driver(medium)	1	
10	72T9-021	Screw driver(short)	1	
11	72T9-022	Double-end wrench	1	
12	22T9-017	Oil container	1	
13	22T9-018	Vinyl cover	1	
14	73T2-004	Needle	4	

14	22T9-006D16	Set screw
15	22T9-006D17	Bobbin winder tension b
16	22T9-006D18	Bobbin winder tension s
17	22T9-006D19	Bobbin winder tension d
18	22T9-006D20	Tension stud bushing
19	22T9-006D21	Bobbin winder tension s
20	22T9-006D22	Tension stud nut
21	22T9-006D23	Tension bracket screw
22		Wood screw
23		Washer

