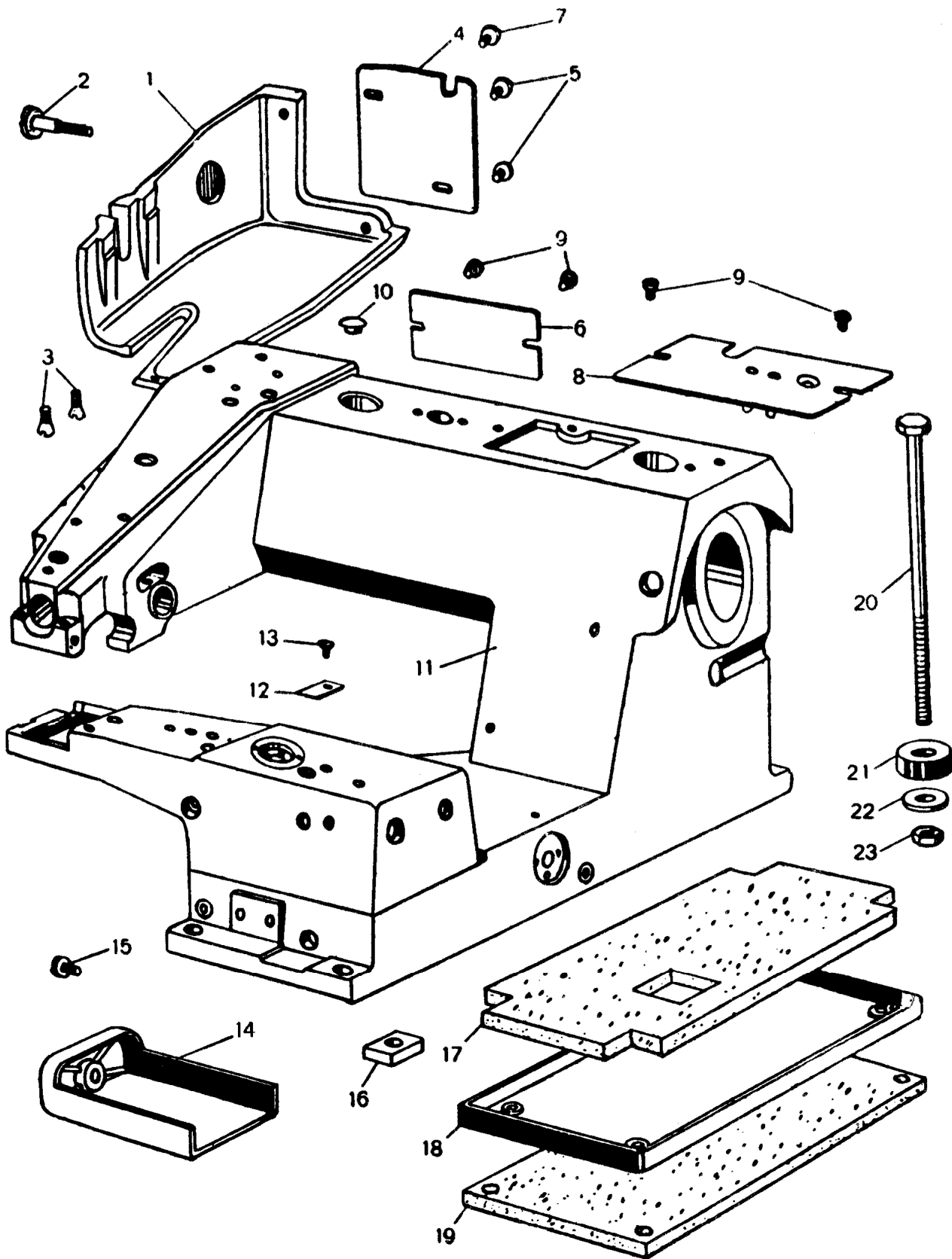


1. 机壳和润滑组件

Machine casing and lubrication components

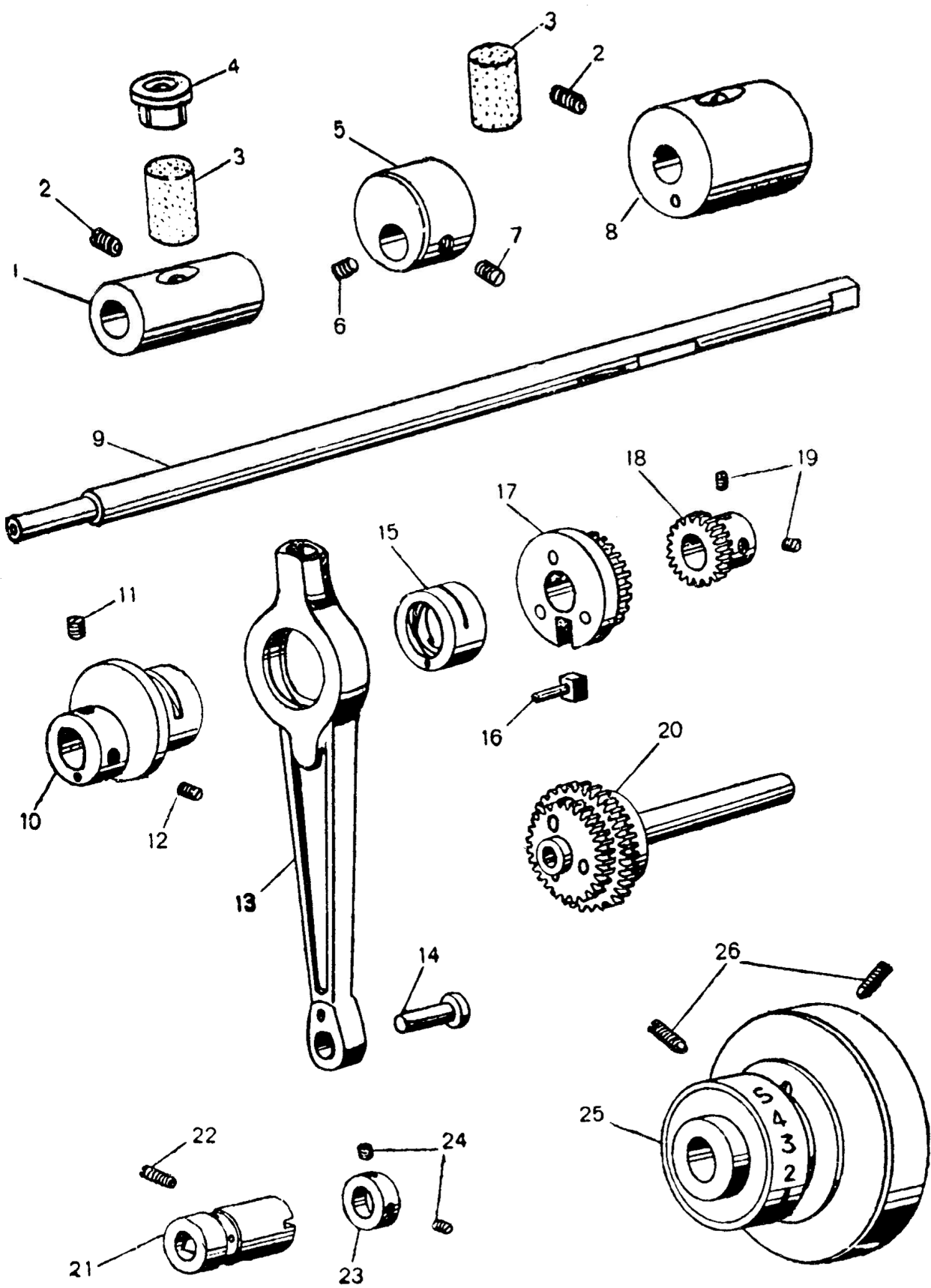
序号	件号	名称	数量
Ref. No.	Part No.	Description	Amt.
1	GK1-2	上臂罩壳..... Upper arm cover.....	1
2	GS1-2	上臂罩壳螺钉..... Upper arm cover screw.....	1
3	GS7-2	圆锥螺钉..... Taper cone screw	2
4	GK3-2	上臂后盖..... Upper arm rear cover	1
5	S40	盖板螺钉..... Cover plate screw.....	2
6	GK4-2	底座后盖板..... Rear cover plate of base frame	1
7	GS6-2	上臂后盖螺钉..... Upper arm rear cover screw	1
8	GK2-2	盖板..... Cover plate.....	1
	GR3-2	紫铜管..... Red copper tube.....	2
9	S40	盖板螺钉..... Cover plate screw.....	4
10	GR10-2	上臂橡胶塞..... Upper arm rubber plug.....	1
11	GQ1-2	底座..... Base frame	1
12	GK6-2	油孔盖..... Oil-hole cover	1
13	GS6-2	螺钉..... Screw.....	1
14	GK5-2	下臂罩壳..... Lower arm cover.....	1
15	GS2-2	下臂罩壳螺钉..... Lower arm cover screw.....	1
16	GR14-2	防震胶垫..... Shockproof rubber pad.....	4
17	GR15-2	底盘防震垫..... Shockproof pad of base pan	1
18	GR16-2	机壳底盘..... Machine casing base pan.....	1
19	GR17-2	机座防震垫..... Machine casing shockproof pad.....	1
20	GS103-2	小六角头螺栓..... Hexagon head bolt with small head ...	4
21	GR18-2	防松胶垫..... Rubber pad	4
22	GR201-2	平垫..... Washer	4
23	GL101-2	螺母..... Nut.....	4



2 主轴组件

Main shaft components

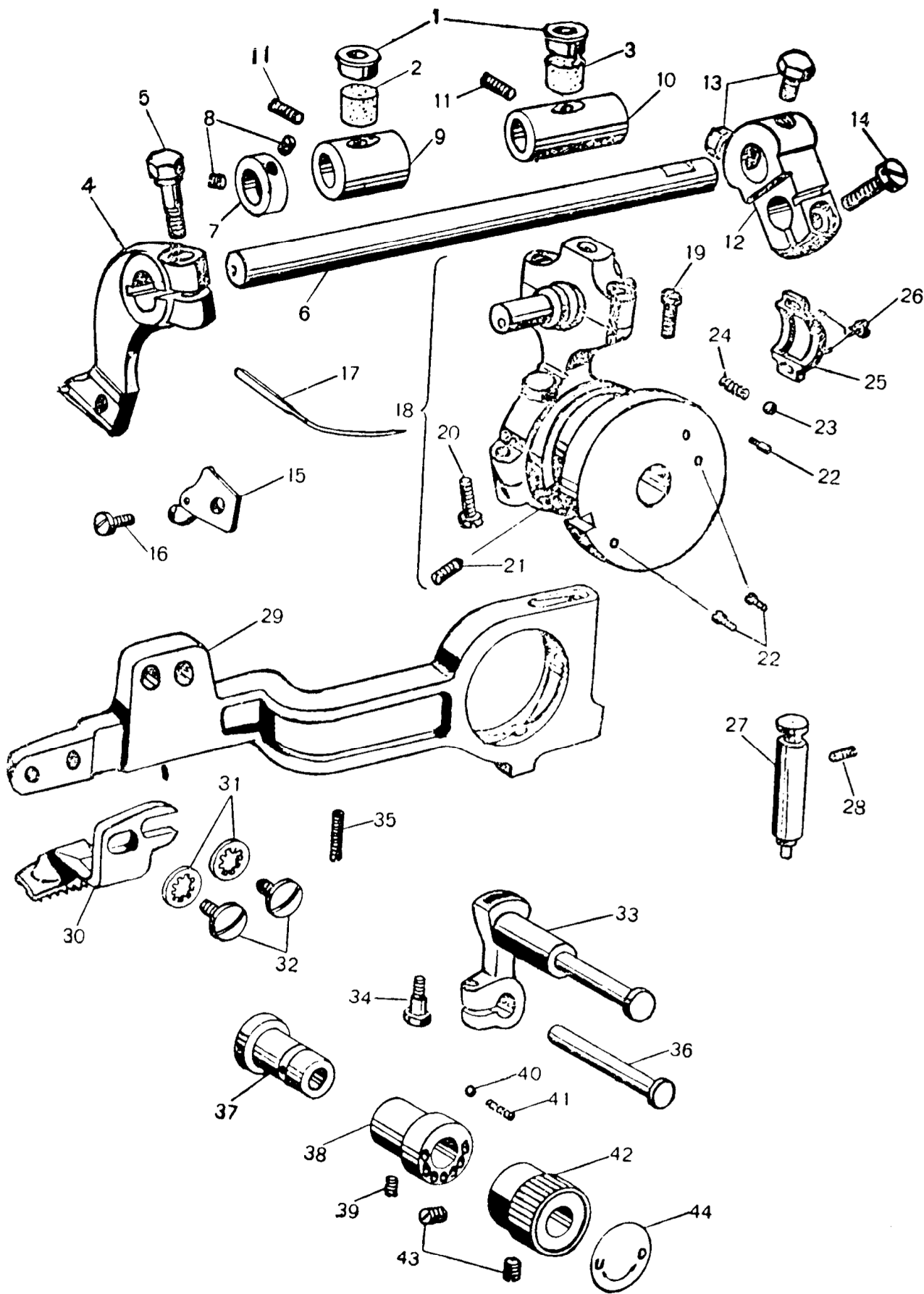
序号	件号	名称	数量
Ref. No.	Part. No.	Description	Amt.
1	GO1-2	主轴左轴套····· Main shaft bushing (left)·····	1
2	GS37	紧钉螺钉····· Set screw·····	2
3	GR4-2	主轴油毡····· Main shaft oil flet·····	2
4	GR1-2	主轴油塞····· Main shaft oil plug·····	1
5	GO3-2	平衡套····· Balance sleeve·····	1
6	GS8-2	锥端紧定螺钉····· Set screw with cone point·····	1
7	GS9-2	紧定螺钉····· Set screw·····	1
8	GO7-2	主轴右轴套····· Main shaft busing(right)·····	1
9	GZ2-2	主轴····· Main shaft·····	1
10	GO4-2	偏心轴套····· Eccentric bushing·····	1
11	GS50	紧定螺钉····· Set screw·····	1
12	GS50	紧定螺钉····· Set screw·····	1
13	GH1-2	连杆····· Connecting rod·····	1
14	GX3-2	连杆销····· Connecting rod pin·····	1
15	GO5-2	偏心衬套····· Eccentric sleeve·····	1
16	GX2-2	滑销····· Slide pin·····	1
17	GO6-2	主轴大齿轮衬套····· Main shaft large gear sleeve·····	1
	GC1-2	主轴大齿轮····· Main shaft large gear·····	1
	GX102-2	主轴大齿轮铆钉····· Main shaft large gear rivet·····	3
18	GC2-2	主轴小齿轮····· Main shaft pinion gear·····	1
19	GS43	紧定螺钉····· Set screw·····	2
20	GC4-2	惰性小齿轮····· Idler pinion gear·····	1
	GC3-2	惰性大齿轮····· Idler gear (large)·····	1
	GO10-2	惰性齿轮衬套····· Idler gear sleeve·····	1
	GZ3-2	惰性齿轮轴····· Idler gear shaft·····	1
	GX103-2	惰性齿轮铆钉····· Idler gear rivet·····	3
21	GO9-2	惰性齿轮偏心轴套····· Idler gear eccentric bushing·····	1
22	GS37	紧定螺钉····· Set screw·····	1
23	GO8-2	挡圈····· Retainer ring·····	1
24	GS43	紧定螺钉····· Set screw·····	2
25	GP1-2	手轮····· Handwheel·····	1
26	GS37	紧定螺钉····· Set screw·····	2



3. 送 牙和针轴组件

Feed dogs and needle shaft componets

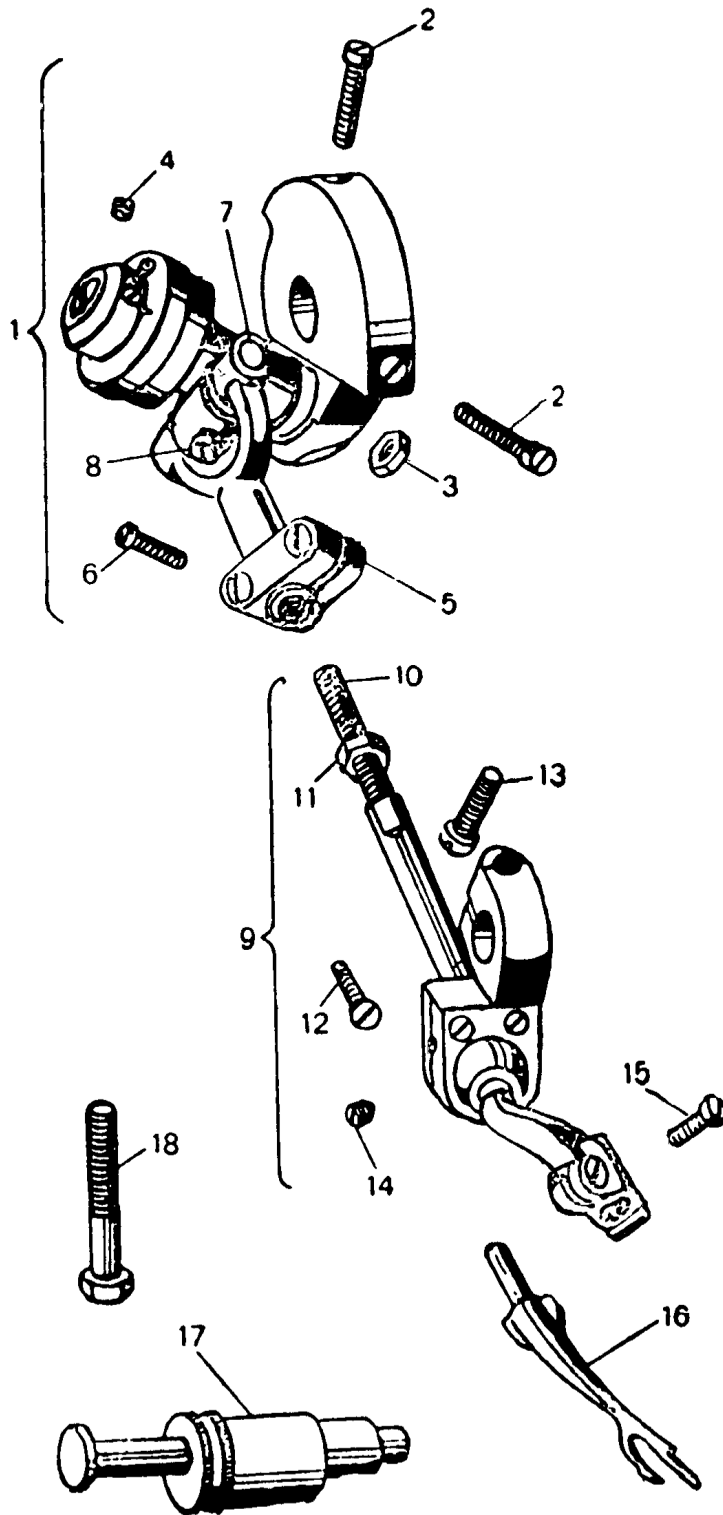
序号 Ref. No.	件号 Part. No.	名 称	Description	Amt.
1	GR164	油杯	Needle shaft oil cup	2
2	GR11-2	油毡	Needle shaft oil felt	1
3	GR11-2	油毡	Needle shaft oil felt	1
4	GR30-2	夹	Needle carrier	1
5	CS15-2	锁紧 钉	Lock screw	1
6	GZ6-2	针轴	Needle shaft	1
7	GO19-2	针轴挡	Needle shaft retainer ring	1
8	GS43	紧定螺钉	Set screw	2
9	GO18-2	针轴前轴套	Needle shaft bushing (front)	1
10	GO17-2	针轴后轴套	Needle shaft bushing (rear)	1
11	GS8	轴套紧定	Bushing set screw	2
12	GH4-2	针轴曲柄	Needle shaft crank	1
13	GS61	曲柄固定	Set screw on the crank	1
14	GS55	锁紧	Lock screw	1
15	GR31-2	针夹板	Needle carrier plate	1
	GR32-2	过线环	Thread guide ring	1
16	GS16-2	夹针	Needle carrier screw	1
17	GV1-2	机针	Needle	1
18	GR29-2	心球	Eccentric ball shaft pin	1
	GR25-2	连杆上盖	Upper cover of connecting rod	1
	GR26-2	连杆体	Connecting rod	1
	GR27-2	连杆下盖	Lower cover of connecting rod	1
	GO15-2	球偏心套	Ball eccentric sleeve	1
	GO14-2	送料偏心滑套	Feed eccentric sliding sleeve	1
	GO13-2	线迹长度调节 心套	Stitch length regulating eccentric sleeve	1
19	GS14-2		Screw	2
20	GS55		Screw	2
21	GS13-2	内六角锥端紧定 钉	Hexagon socket screw with cone point	1
22	GS12-2	限位 钉	Limit screw	2
23	GR21-2	钢球	Steel ball	1
24	GW3-2	弹	Spring	1
25	GR28-2	偏心球轴销护	Protecting cover	1
26	GS44	钉	Screw	2
27	GO16-2	线迹长度调节插套	Regulating latch sleeve	1
	GW5-2	插销弹簧	Latch spring	1
	GX4-2	线迹长度调节插销	Stitch length regulating latch	1
	GR24-2	线迹长度调节按钮	Stitch length regulating press-botton	1
28	GS45	插套紧定 钉	Latch sleeve set screw	1
29	GH2-2	送料杆	Feed lever	1
30	GM1-2	送料牙	Feed dog	1
31	GR202-2	内齿弹性垫圈	Spring washer with internal teeth	2
32	GS10-2	钉	Screw	2
33	GH3-2	送料摆杆	Feed swing link	1
	GZ5-2	摆杆销轴	Swing link pin rod	1
34	GS037	锁紧 钉	Lock screw	1
35	GS11-2	内六角凹端紧定 钉	Hexagon socked set screw with cup point	1
36	GZ4-2	销轴	Pin rod	1
37	GO12-2	心衬套	Eccentric sleeve	1
38	GO11-2	轴套	Bushing	1
39	GS45	紧定	Set screw	2
40	GR21-2	钢球	Steel ball	1
41	GW2-2		Spring	1
42	GR20-2	送料牙高度调节旋钮	Feed dog height adjusting knob	1
43	GS58	紧定	Set screw	2
44	GR19-2	送料牙高度调节指示片	Adjusting indicator plate	1



4. 钩线叉部件

Thread hook components

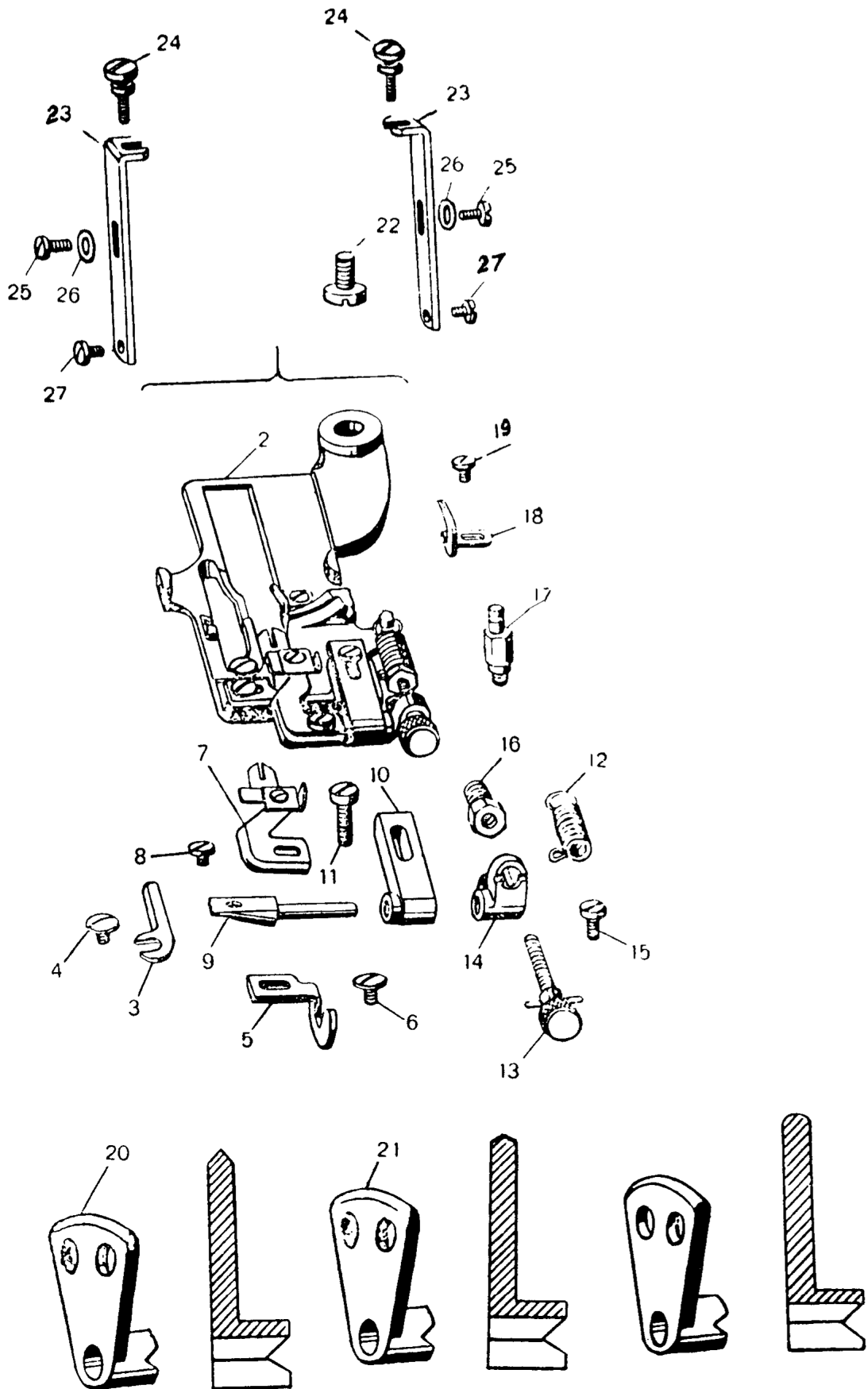
序号	件号	名称	数量
Ref. No.	Part. No.	Description	Amt.
1	GO20-2	驱动轴定位环…… Positioning ring of driving shaft……	1
	GZ7-2	钩线叉驱动轴…… Driving shaft of thread hook……	1
	GR33-2	油毛毡…… Oil felt……	1
	GR34-2	油毡盖…… Oil felt cover……	1
	GR35-2	万向接头(后)…… Universal joint(rear) ……	1
2	GS19-2	曲柄柱头螺钉…… Crank cheese head screw ……	2
3	L3	驱动轴螺母…… Driving shaft nut ……	1
4	GS43	柱头螺钉…… Cheese head screw ……	2
5	GR36-2	万向接头(前)…… Universal joint(front)……	1
6	GS20-2	螺钉…… Screw ……	2
7	GX5-2	万向接头销…… Universal joint pin ……	1
8	GS18-2	螺钉…… Screw ……	1
	GH5-2	钩线叉曲柄…… Thread hook crank ……	1
9	GR39-2	摆臂(前)…… Swing arm(front)……	1
	GR38-2	摆臂(后)…… Swing arm(rear) ……	1
	GR37-2	球体…… Ball element……	1
10	GZ8-2	钩线叉杆…… Thread hook lever ……	1
11	GL1-2	钩线叉杆螺母…… Thread hook lever nut ……	1
12	GS22-2	摆臂螺钉…… Swing arm screw ……	2
13	GS21-2	摆臂紧固螺钉…… Swing arm clamp screw ……	1
14	GS25-2	球体紧定螺钉…… Ball set screw……	1
15	GS23-2	钩线叉紧固螺钉…… Thread hook clamp screw ……	1
16	GN1-2	钩线叉…… Thread hook ……	1
17	GZ9-2	摆臂轴…… Swing arm shaft ……	1
	GO21-2	偏心支承套…… Eccentric supporting sleeve ……	1
18	GS17-2	紧固螺栓…… Clamp bolt……	1



5. 针板组件

Needle plate components

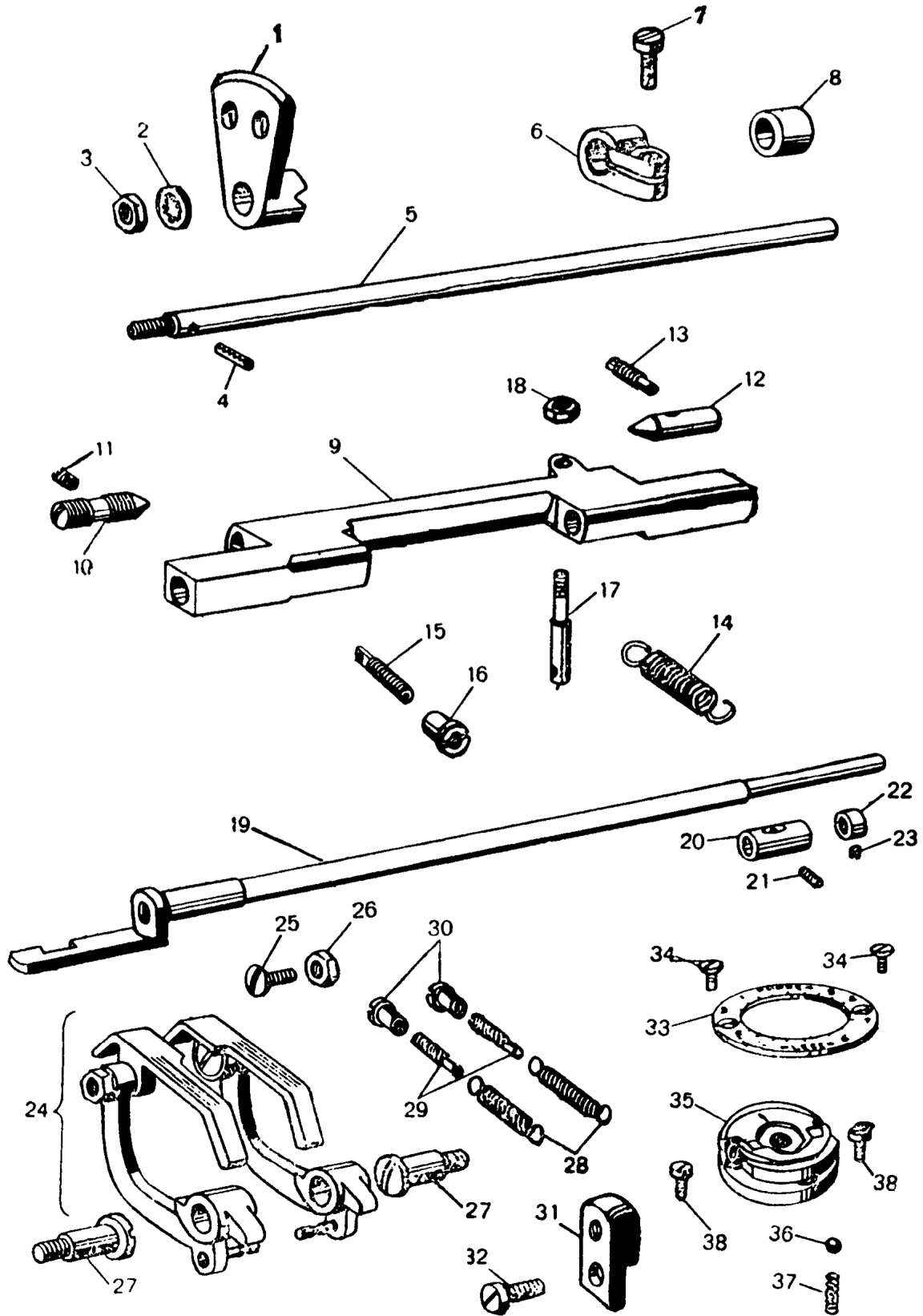
序号	件号	名称	数量
Ret. No.	Part. No.	Description	Amt.
1		针板组件..... Needle plate component	1
2	GM2-2	针板..... Needle plate	1
3	GR46-2	机针护板..... Needle guard	1
4	S16	机针护板螺钉..... Needle guard screw	1
5	GR47-2	导料板..... Material guide plate	1
6	GR34-2	导料板螺钉..... Material guide plate screw	1
7	GR43-2	压料板..... Material retainer.....	1
8	GS31-2	压料板螺钉..... Material retainer screw.....	1
9	GZ10-2	架轴..... Frame shaft.....	1
10	GR42-2	托架..... Bracket.....	1
11	S40	镀铬螺钉..... Chromium-plating screw.....	1
12	GW6-2	压料拉簧..... Material retainer extension spring.....	1
13	GS28-2	调节螺钉..... Adjusting screw.....	1
	GX6-2	销..... Pin.....	1
14	GR48-2	支承架..... Supporting frame	1
15	S40	镀铬螺钉..... Chromium-plating screw	1
16	GL2-2	调节螺母..... Adjusting nut.....	1
17	GR45-2	拉簧柱..... Extension spring pillar.....	1
18	GR44-2	挡线块..... Retaining block.....	1
19	GS33-2	挡线块螺钉..... Retaining block screw.....	1
20	GR49-2	抬料轮(90°)..... Ridge forming disc(90°)	1
21	GR50-2	抬料轮(120°)..... Ridge forming disc(120°)	1
	GR51-2	抬料轮(圆头)..... Ridge forming disc(round head)	1
22	GS27-2	针板固定大螺钉... Needle plate clamping screw (large).....	1
23	GR40-2	针板支架..... Needle plate support	2
24	GS26-2	支架调节螺钉..... Support regulating screw	2
25	GS29-2	支架固定螺钉..... Support clamping screw	2
26	GR203-2	平垫..... Washer	2
27	GS30-2	针板固定螺钉..... Needle plate clamping screw.....	2



6. 抬料轮和抬压脚组件

Ridge forming disc and lifting presser components

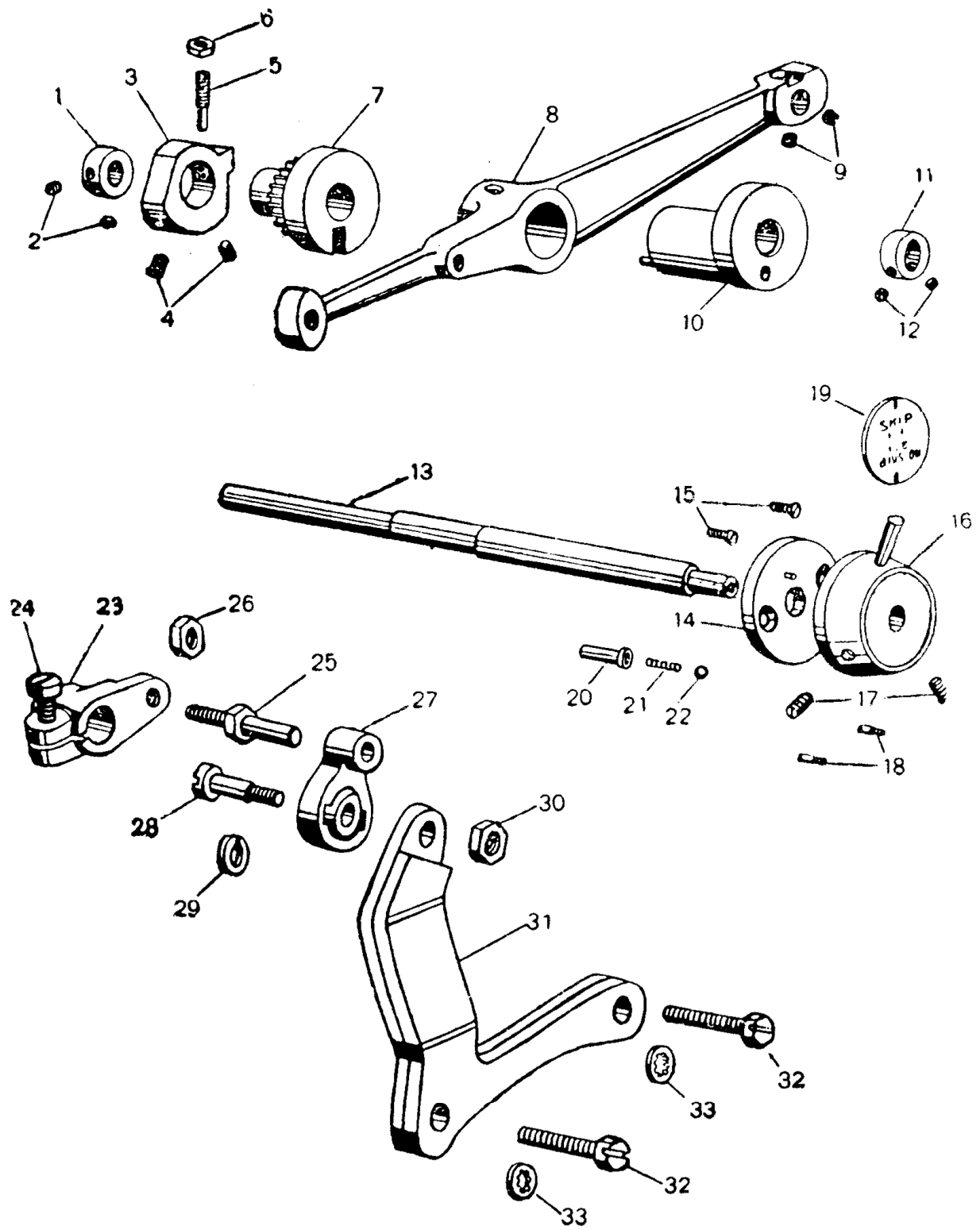
序号	件号	名称	数量
Ret. No.	Part. No.	Description	Amt.
1		抬料轮…(90°,20°前头) Ridge forming disc(90°,120°, round head……………	1
2	GR204-2	内齿弹性垫圈…… Spring washer with internal teeth……	1
3	GL3-2	六角螺母…… Hexagon nut ……	1
4	GX106-2	弹性圆柱销…… Spring-type straight pin……	1
5	GZ11-2	抬料轴…… Ridge forming disc shaft……	1
6	GR53-2	卡圈…… Collar……	1
7	GS037	锁紧螺钉…… Lock screw……	1
8	GO22-2	垫圈…… Washer……	1
9	GR52-2	抬料调节杆…… Adjusting rod ……	1
10	GS35-2	顶尖螺钉…… Pointed screw ……	1
11	GS48	紧定螺钉…… Set screw ……	1
12	GR54-2	小顶尖…… Small point ……	1
13	S3	圆柱端紧定螺钉… Set screw with dog point……	1
14	GW7-2	弹簧…… Sping ……	1
15	GS36-2	弹簧吊挂螺钉…… Screw ……	1
16	GL5-2	弹簧调节螺母…… Adjusting nut ……	1
17	GX7-2	弹簧挂销…… Pin ……	1
18	GL4-2	六角螺母…… Hexagon nut ……	1
19	GZ12-2	抬压脚轴…… Lifting presser shaft ……	1
20	GO24-2	轴套…… Bushing ……	1
21	GS48	紧定螺钉…… Set screw ……	2
22	GO23-2	挡圈…… Retainer ring ……	2
23	GS43	紧定螺钉…… Set screw ……	1
24	GM3-2	压脚板(左)…… Presser plate(left) ……	1
	GM4-2	压脚板(右)…… Presser plate(right)……	1
	GR59-2	抬压脚杠杆(左)… Lifting presser lever(left) ……	1
	GR60-2	抬压脚杠杆(右)… Lifting presser lever(right)……	1
	GX9-2	小弹簧挂销…… Pin ……	2
25	GS45-2	圆锥螺钉…… Taper screw ……	2
26	GL8-2	六角螺母…… Hexagon nut ……	2
27	GS43-2	轴位螺钉…… Screw with shoulder ……	2
28	GW9-2	小弹簧…… Small spring……	2
29	GS44-2	小弹簧吊挂螺钉… Screw ……	2
30	GL7-2	小弹簧调节螺母… Adjusting nut ……	2
31	GR61-2	支板…… Support plate ……	2
32	GS030	圆柱头螺钉…… Cheese head screw ……	1
33	GR55-2	指示圈…… Indicator ring……	1
34	GS38-2	沉头螺钉…… Countersunk head screw……	1
35	GR58-2	旋扭…… Knob……	2
36	GR21-2	钢球…… Steel ball……	1
37	GW8-2	弹簧…… Spring……	1
38	GS66	圆柱头螺钉…… Cheese head screw ……	2



7. 抬料轮传动及跳针组件

Disc oscillating and skip stitch components

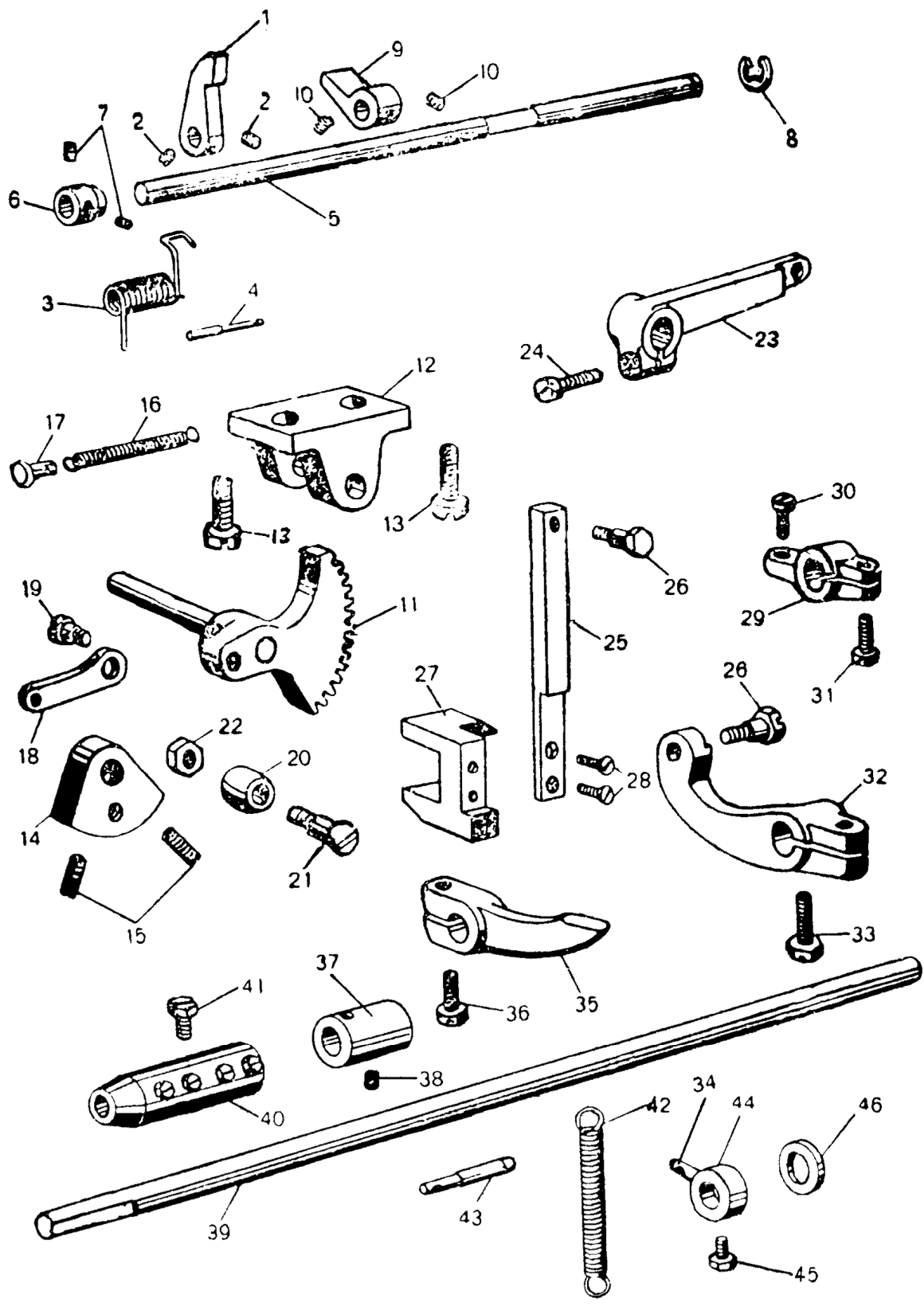
序号	件号	名称		数量
Ref. No.	Part. No.	Description		Amt.
1	GO28-2	左挡圈·····	Retainer ring(left)·····	1
2	GS50	紧定螺钉·····	Set screw·····	2
3	GT1-2	止动凸轮·····	Stopping cam ·····	1
4	GS48	紧定螺钉·····	Set screw·····	2
5	GS47-2	限位螺钉·····	Limit screw·····	1
6	L1	六角螺母·····	Hexagon nut·····	1
7	GO27-2	衬套·····	Bushing·····	1
	GS5-2	齿轮·····	Gear ·····	1
8	GX13-2	摆杆·····	Swing link ·····	1
9	GS48	紧定螺钉·····	Set screw·····	2
10	GO26-2	偏心套·····	Eccentric sleeve ·····	1
	GX107-2	拨销·····	Pin·····	1
11	GO25-2	右挡圈·····	Retainer ring(right) ·····	1
12	GS50	紧定螺钉·····	Set screw·····	2
13	GZ14-2	偏心轴·····	Eccentric shaft·····	1
14	GR65-2	支承圈·····	Supporting ring·····	1
	GX104-2	定位销·····	Positioning pin·····	1
15	GS47	沉头螺钉·····	Countersunk head screw ·····	2
16	GR66-2	手柄·····	Handle ·····	1
	GR67-2	手柄座·····	Base of handle ·····	1
17	GS48	紧定螺钉·····	Set screw·····	2
18	GS12-2	限位螺钉·····	Limit screw·····	2
19	GR68-2	指示片·····	Indicator plate·····	1
20	GR64-2	弹簧支承套·····	Supporting sleeve·····	1
21	GW3-2	小弹簧·····	Small spring ·····	1
22	GR21-2	钢球·····	Steel ball ·····	1
23	GH7-2	曲柄·····	Crank·····	1
24	GS037	锁紧螺钉·····	Lock screw ·····	1
25	GX10-2	连杆销·····	Connecting lever pin ·····	1
26	GL8-2	六角螺母·····	Hexagon nut·····	1
27	GR63-2	球轴节·····	Ball joint ·····	1
	GH6-2	球连杆·····	Ball connecting lever·····	1
28	GS46-2	轴位螺钉·····	Shoulder screw ·····	1
29	GR206-2	弹簧垫圈·····	Spring washer·····	1
30	GL8-2	六角螺母·····	Hexagon nut·····	1
31	GR62-2	撬板·····	Prizing plate·····	1
32	GS58-2	摆杆螺钉·····	Screw of swing link·····	2
33	GR205-2	内齿弹性垫圈·····	Spring washer with internal teeth·····	2



8. 膝提压脚及止动组件

Disc locking mechanism and Knee lifting presser shaft parts

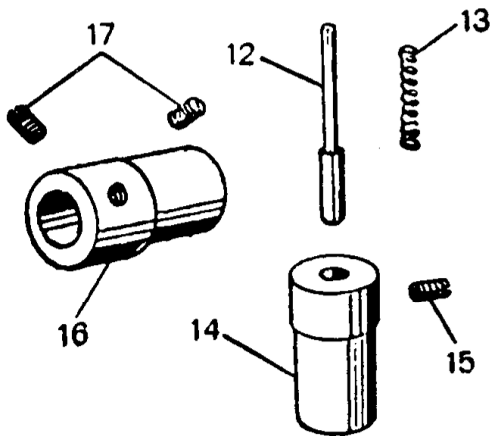
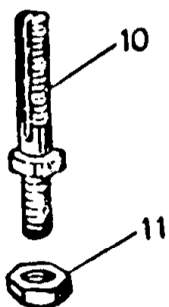
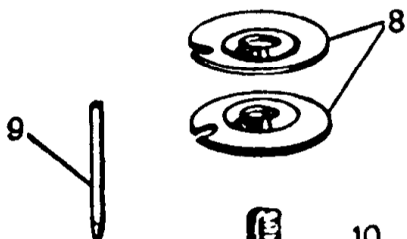
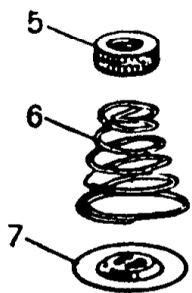
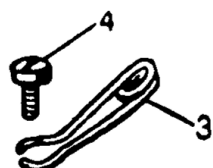
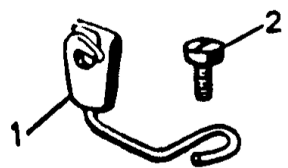
序号	件号	名称	数量
Ref. No.	Part. No.	Description	Amt.
1	GR72-2 Stop dog.....	1
2	GS43 Cheese head screw	2
3	GW11-2 Torsional spring.....	1
4	GX12-2 Torsional spring pin.....	1
5	GZ17-2 Thin shaft.....	1
6	GO29-2 Limit sleeve.....	1
7	GS45 Cheese head screw	2
8	GR207-2 Circlip for shaft	1
9	GR76-2 Stop dog.....	1
10	GS43 Cheese head screw	2
11	GZ15-2 Gear shaft.....	1
	GC6-2 Sector gear	1
12	GR70-2 Bearing bracket	1
13	GS50-2 Screw	2
14	GT2-2 Cam.....	1
15	GS55-2 Set screw with cup point.....	2
16	GW12-2 Extension spring of cam	1
17	GX13-2 Extension spring pin of cam	1
18	GH9-2 Thin connecting rod	1
19	GS27 Short hinge screw	1
20	GR77-2 Roller.....	1
21	GS53-2 Roller screw.....	1
22	GL9-2 Nut	1
23	GH8-2 Connecting rod.....	1
24	GS05 Screw	1
25	GZ16-2 Lever	1
26	GS52-2 Hinge screw	1
27	GR69-2 Balance weight.....	1
28	GS54-2 Countersunk head screw.....	2
29	GR75-2 Limit dog	1
30	GS037 Screw	1
31	GS55 Screw	1
32	GH10-2 Bending connecting lever.....	1
33	GS56-2 Hexagon screw	1
34	GS51-2 Extension spring screw.....	1
35	GR74-2 Bending stop dog.....	1
36	GS05 Screw	1
37	GO31-2 Bearing sleeve.....	1
38	GS45 Cheese head screw	1
39	GZ18-2 Long shaft.....	1
40	GR71-2 Sleeve.....	1
41	GS49-2 Screw	4
42	GW10-2 Spring.....	1
43	GX11-2 Pin	1
44	GR73-2 Sleeve.....	1
45	GS48-2 Sleeve clamp screw.....	1
46	GO30-2 Washer.....	1



9. 夹线器及锁线组件

Thread tension and nipper parts components

序号	件号	名称	数量
Ref. No.	Part. No.	Description	Amt.
1	GR12-2	过线环·····Thread guide·····	1
2	GS4-2	螺钉·····Screw ·····	1
3	GR13-2	过线环·····Thread guide·····	2
4	GS4-2	螺钉·····Screw ·····	2
5	L5	夹线螺母·····Thread tension nut·····	1
6	GW15-2	夹线簧·····Thread tension spring ·····	2
7	R57	松线板·····Thread tension releasing disc·····	1
8	GR013	夹线板·····Thread tension disc ·····	1
9	GX1-2	定位销·····Positioning pin ·····	1
10	GS3-2	夹线螺钉·····Thread tension screw stud·····	1
11	L1	螺母·····Nut ·····	1
12	GZ1-2	顶杆·····Pushing bar ·····	1
13	GW1-2	松线簧·····Thread tension releasing spring ·····	1
14	GR2-2	夹线柱套·····Thread tension sleeve ·····	1
15	GS48	紧定螺钉·····Set screw ·····	1
16	GO2-2	松紧线偏心套·····Eccentric sleeve·····	1
17	S18	紧定螺钉·····Set screw ·····	2



10 托板组件

Work plate components

序号	件号	名称		数量
Ref. No.	Part. No.	Description		Amt.
1	GR80-2	托板·····	Work plate·····	1
2	GX15-2	定位销·····	Positioning pin ·····	1
3	GS49-2	螺钉·····	Screw ·····	1
4	GZ20-2	托架轴·····	Work plate shaft·····	1
5	GS104-2	轴肩螺钉·····	Shoulder screw·····	1
6	GO32-2	挡圈·····	Retainer ring ·····	1
7	S18	挡圈螺钉·····	Retainer ring screw ·····	2
8	GS58-2	螺钉·····	Screw ·····	2
9	GR78-2	支座·····	Bracket ·····	1
10	GS105-2	支座螺钉·····	Bracket screw ·····	2
11	GX14-2	顶销·····	Pin ·····	1
12	GW14-2	长弹簧片·····	Spring leaf(long) ·····	1
13	GW13-2	短弹簧片·····	Spring leaf(short)·····	1
14	GS49-2	螺钉·····	Screw ·····	1
15	GZ19-2	膝操纵杆·····	Knee lifter control lever ·····	1
16	GR83-2	膝靠板·····	Knee lifter press plate ·····	1
17	GS49-2	螺钉·····	Screw ·····	1
18	GR84-2	膝靠垫·····	Knee lifter press pad ·····	1

