



# 高速电子套结机

ZJ1900  
ZJ1901 ZJ1903  
ZJ1902 ZJ1904F

COMPUTER-CONTROLLED HIGH SPEED LOCKSTITCH BAR TACKING MACHINE

## 零件手册

PARTS BOOK

中国·中捷缝纫机股份有限公司  
ZOJE SEWING MACHINE CO., LTD.

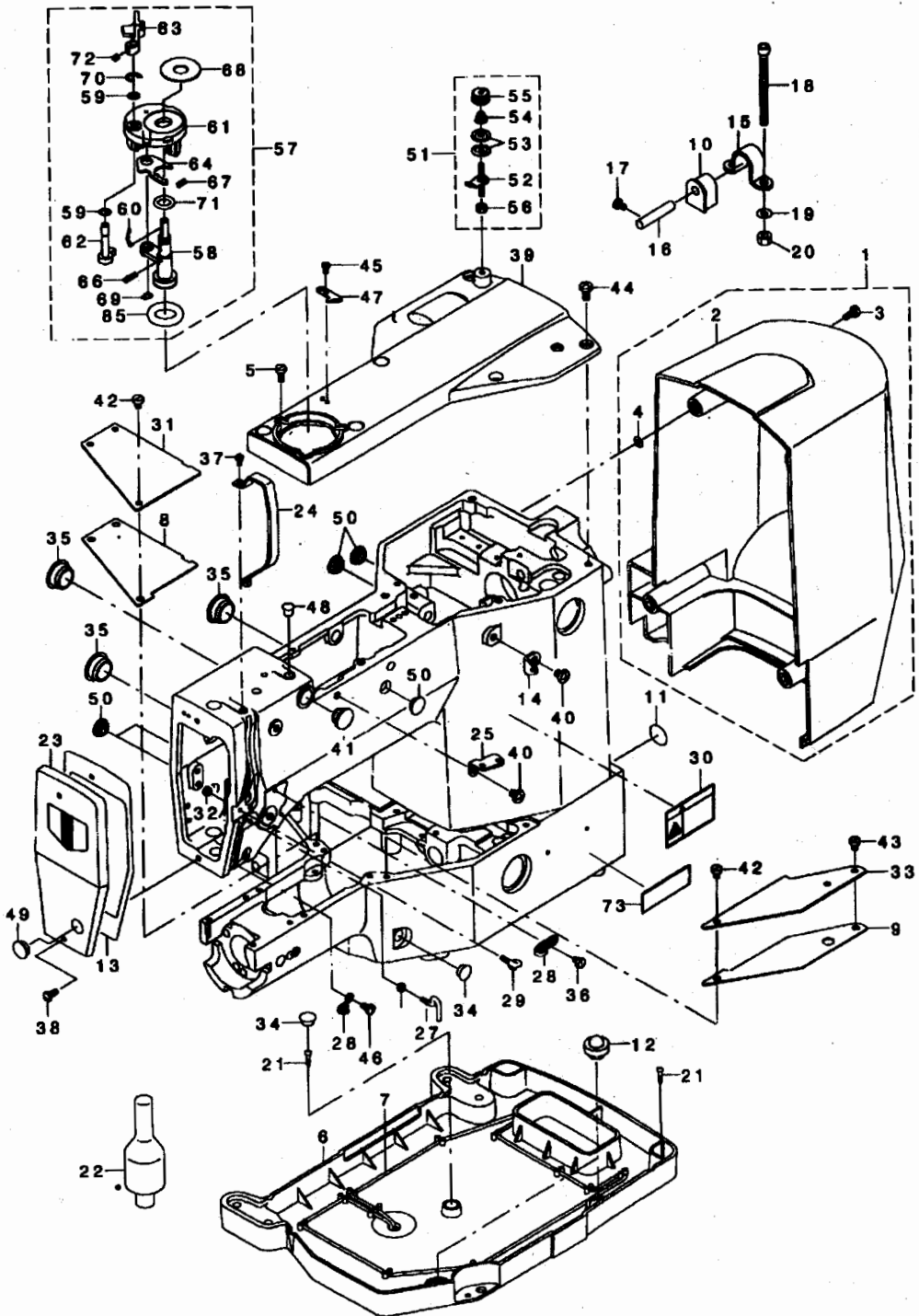
# CONTENTS

## 目 录

1. FRAME&MISCELLANEOUS COMPONENTS.....	1
机壳部件	
2. MAIM SHAFT&NEEDLE BAR COMPONENTS.....	3
挑线刺布部件	
3. PRESSER LIFTER COMPONENTS.....	5
电磁铁部件	
4. SHUTTLE DRIVER SHAFT COMPONENTS.....	7
下轴部件	
5. WIPER MECHANISM COMPONENTS.....	9
扫线部件	
6. TENSION RELEASE&THREAD TENSION COMPONENTS.....	10
松线部件	
7. TENSION RELEASE&THREAD TRIMMER MECHANISM COMPONENTS.....	11
剪线部件	
8. FEED MECHANISM COMPONENTS.....	13
送料部件	
9. LUBRICATION COMPONENTS.....	15
供油部件	
10. SENSOR&EXTENSION CABLE COMPONENTS.....	17
传感器部件	
11. THREAD STAND COMPONENTS.....	18
线架部件	
12. CONTROL BOX COMPONENTS.....	19
电控部件	
13. OPERATION BOX&PEDAL COMPONENTS.....	20
操作箱与踏脚部件	
14. ACCESSORIE PART COMPONENTS.....	21
附件	

# 1. FRAME & MISCELLANEOUS COVER COMPONENTS

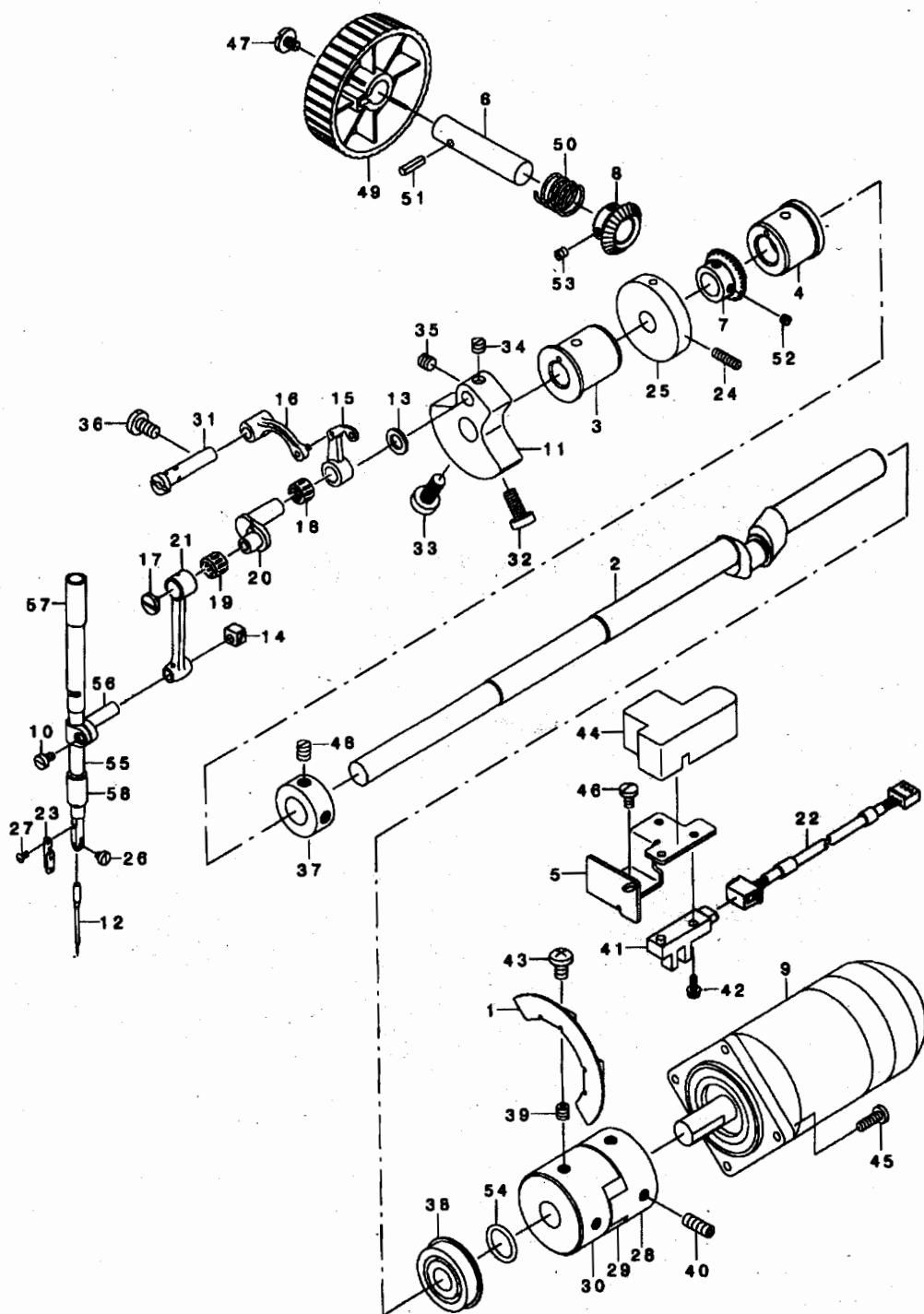
## 机壳部件



序号	件号	名称	DESCRIPTION	数量
1	501BJ105	后罩组件	MOTOR COVER ASM.	1
2	501GR106	后罩	MOTOR COVER	1
3	501GS108	后罩螺钉	SCREW	4
4	501GK106	后罩垫片	STOPPER	4
5	501GS108	绕线器固定螺钉	SCREW	3
6	501GR103	底座	OIL PAN	1
7	501GB101	底座回油线	OIL WICK	1
8	501GF106	左盖板垫	BED COVER PACKING A	1
9	501GF107	右盖板垫	BED COVER PACKING B	1
10	501GF109	机头胶垫	HINGE RUBBER	2
11	GQ239-8	机头接地指示牌	GROUND MARK	2
12	GR683-8	底板支垫	FRAME SUPPORT RUBBER	2
13	501GF108	面板垫	FACE PACKING	1
14	501GB102	单眼过线板	THREAD GUIDE NO.1	1
15	501GB108	支承固定架	BED HINGE	2
16	501GX101	支承销	HINGE STUD	2
17	501GS104	支承销固定螺钉	SCREW	2
18	501GS107	支承固定架螺钉	HEXAGONAL-HOLE BOLT	4
19	501GK101	垫片	WASHER	4
20	501GL102	螺母	NUT	8
21	501GS105	底座木螺钉	SCREW	4
22	501GA106	机头支承杆	HEAD SUPPORT BAR	1
23	501GR107	面板垫	FACE COVER ASM.	1
24	501GR102	绕线杆防护罩	BALANCE COVER	1
25	501GB103	上过线板	THREAD GUIDE PLATE	1
26	501GB104	下线钩	ARM THREAD GUIDE B	1
27	501GB105	拦线钩	L-SHAPED THREAD GUIDE A	1
28	GR603-8	过线钩	ARM THREAD GUIDE A	1
29	501GB106	中线钩	THREAD GRIDE	1
30	GQ196-8	安全指示牌	SAFETY LABEL	1
31	501GR104	底板左盖板	BED COVER A	1
32	501GL101	拦线钩螺母	NUT	2
33	501GR105	底板右盖板	BED COVER B	1
34	501GF105	油塞	RUBBER PLUG	2
35	501GF102	左侧面大油塞	RUBBER PLUG	3
36	GS313	过线钩螺钉	SCREW	1
37	501GS102	防护罩螺钉	SCREW	2
38	501GS104	面板螺钉	SCREW	2
39	501GR101	上盖	TOP COVER	1
40	501GS101	单眼过线钩螺钉	SCREW	2
41	501GF103	硅油过线器大油塞	RUBBER PLUG	1
42	501GS103	左盖板螺钉	SCREW	4
43	501GS178	右盖板螺钉	SCREW	1
44	501GS106	上盖螺钉	SCREW	6
45	501GS102	切刀螺钉	SCREW	1
46	501GS124	下线钩螺钉	SCREW	1
47	501GB107	绕线切刀	THREAD CUTTER	1
48	501GF104	硅油过线器小油塞	RUBBER PLUG	1
49	501GF101	面板油塞	RUBBER PLUG	1
50	501GF101	油塞	RUBBER PLUG	5
51	501BJ103	绕线夹线器	BOBBIN THREAD TENSION ASM.	1
52	501BJ104	中过线板组件	BOBBIN THREAD TENSION ROD ASM.	1
53	501GB114	夹线板	THEAD TENSION DISK	2
54	501GW104	夹线簧	CONNECTING ROD SPRING	1
55	501GL103	塑料夹线螺母	THREAD TENSION NUT	1
56	501GL104	夹线螺母	NUT	1
57	501BJ101	绕线器	BOBBIN WINDER ASM.	1
58	501GB113	摆动板	BOBBIN WINDER SHAFT COMPL.	1
59	501GK104	薄垫片	WASHER	2
60	501GW103	梭芯弹簧	LATCH SPRING	1
61	501BJ102	梭心卷绕体组件	BOBBIN FITTING BASIS COMPL	1
62	501GB111	绕线定位块	BOBBIN WINDER REGULATOR	1
63	501GB110	卷线手柄	BOBBIN LEVER	1
64	501GB112	控制板	ADJUSTING PLATE	1
65	501GF118	橡胶轮	RUBBER RING	1
66	501GW101	复位长弹簧	SPRING	1
67	501GW102	复位短弹簧	SPRING	1
68	501GK102	卷线轴垫	CUSHING	1
69	501GK103	绕线器摆动板轴挡圈	RETAINING RING	1
70	501GK105	绕线器绕线凸轮轴挡圈	E-RING	1
71	501GF110	卷线轴O形圈	RUBBER RING	1
72	501GS109	螺钉	SCREW	1
73	501GB109	型号牌	MACHINE COVER	1

## 2. MAIN SHAFT & NEEDLE BAR COMPONENTS

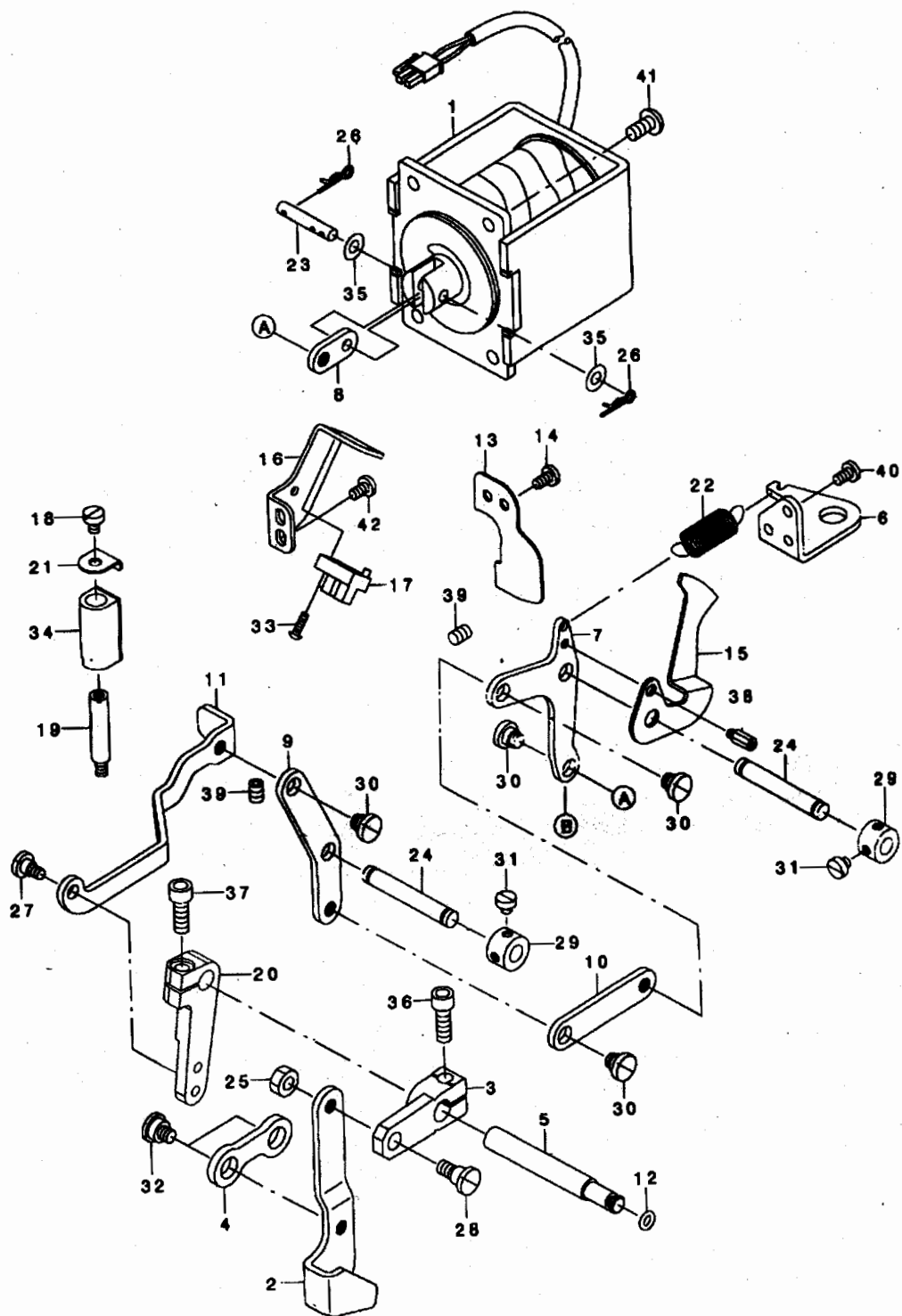
挑线刺布部件



序号	件号	名称	DESCRIPTION	数量
1	501GB119	上轴传感器挡光片	MAIN SHAFT SLIT PLATE	1
2	501GZ105	上轴	MAIN SHAFT	1
3	501GO105	上轴前轴套	MAIN SHAFT BUSHING, FRONT	1
4	501GO106	上轴中轴套	MAIN SHAFT BUSHING, MIDDLE	1
5	501GB120	传感器固定架	SENSOR INSTALLING BASE	1
6	501GZ104	手轮轴	HAND PULLEY SHAFT	1
7	501GC101	上轴零度弧齿圆锥齿轮	HAND PULLEY GEAR A	1
8	501GC102	手轮轴零度弧齿圆锥齿轮	HAND PULLEY GEAR B	1
9	501GD102	上轴电机	MAIN MOTOR	1
10	GS311-8	针杆连接柱螺钉	SCREW	1
11	501GH104	针杆曲柄	COUNTER WEIGHT	1
12	501GV101	机针	NEEDLE DPX5 #16	1
13	501GK107	针杆曲柄垫圈	NEEDLE ROD CRANK WASHER	1
14	501GU101	针杆连接轴滑块	SQUARE BLOCK	1
15	501BJ107	挑线杆组件	THREAD TAKE-UP LEVER	1
16	501GH101	挑线连杆	THREAD TAKE-UP CRANK	1
17	GS309-8	挑线连杆左旋螺钉	LEFT SCREW	1
18	501GU103	挑线杆滚针轴承	NEEDLE BUSHING	1
19	501GU102	小连杆滚针轴承	NEEDLE DRIVING LEVER BEARING	1
20	501GH103	挑线曲柄	NEEDLE ROD CRANK	1
21	501GH102	小连杆	NEEDLE BAR CRANK ROD	1
22	501GD101	上轴传感器接线	UPPER SHAFT SENSOR CABLE ASM.	1
23	501GB117	针杆过线板	NEEDLE BAR THREAD GUIDE	1
24	501GS119	主动轮螺钉	SCREW	2
25	501GP102	绕线主动轮	BOBBIN WINDER DRIVING WHEEL	1
26	501GS113	机针螺钉	SCREW	1
27	501GS112	针杆过线板螺钉	SCREW	1
28	501GU106	传动连接后块	COUPLING, BACK	1
29	501GB118	传动连接橡胶块	RELAX	1
30	501GU107	传动连接前块	COUPLING, FRONT	1
31	501GX103	挑线连杆销	BALANCE CRANK PIN	1
32	501GS116	针杆曲柄紧固螺钉	SCREW	1
33	501GS115	针杆曲柄定位螺钉	SCREW	1
34	501GS117	挑线曲柄短螺钉	SCREW	1
35	501GS118	挑线曲柄长螺钉	SCREW	1
36	501GS114	挑线连杆销螺钉	SCREW	1
37	501GK108	凸轮挡圈	THRUST COLLAR ASM.	1
38	501GU104	上轴轴承	UPPER SHAFT REAR BEARING	1
39	501GS122	传动连接前块螺钉	SCREW	2
40	501GS123	传动连接后块螺钉	SCREW	2
41	501GD110	上轴传感器外壳组件	PHOTO SENSOR	1
42	501BJ111	上轴传感器外壳螺钉组件	SCREW	1
43	501BJ110	上轴挡光片螺钉组件	SCREW	2
44	501GR108	传感器防护盖	MAIN SHAFT SENSOR COVER	1
45	501GS125	上轴电机螺钉	SCREW	4
46	501GS124	传感器固定架螺钉	SCREW	1
47	501GS120	手轮轴螺钉	SCREW	1
48	501GS118	螺钉	SCREW	2
49	501GP103	手轮	PULLEY	1
50	501GW105	手轮弹簧	SPRING	1
51	501GX104	手轮轴弹簧销	SPRING PIN	1
52	501GS121	弧齿锥齿轮螺钉	SCREW	2
53	501GS121	弧齿锥齿轮螺钉	SCREW	2
54	501GF112	上轴O形圈	RUBBER RING	1
55	501GO102	针杆	NEEDLE BAR	1
56	GR598-8	针杆连接柱	NEEDLE BAR	1
57	501GO101	针杆上套筒	NEEDLE ROD METAL	1
58	501GO103	针杆下套筒	NEEDLE LOWER METAL	1

### 3. PRESSER LIFTER COMPONENTS

电磁体部件

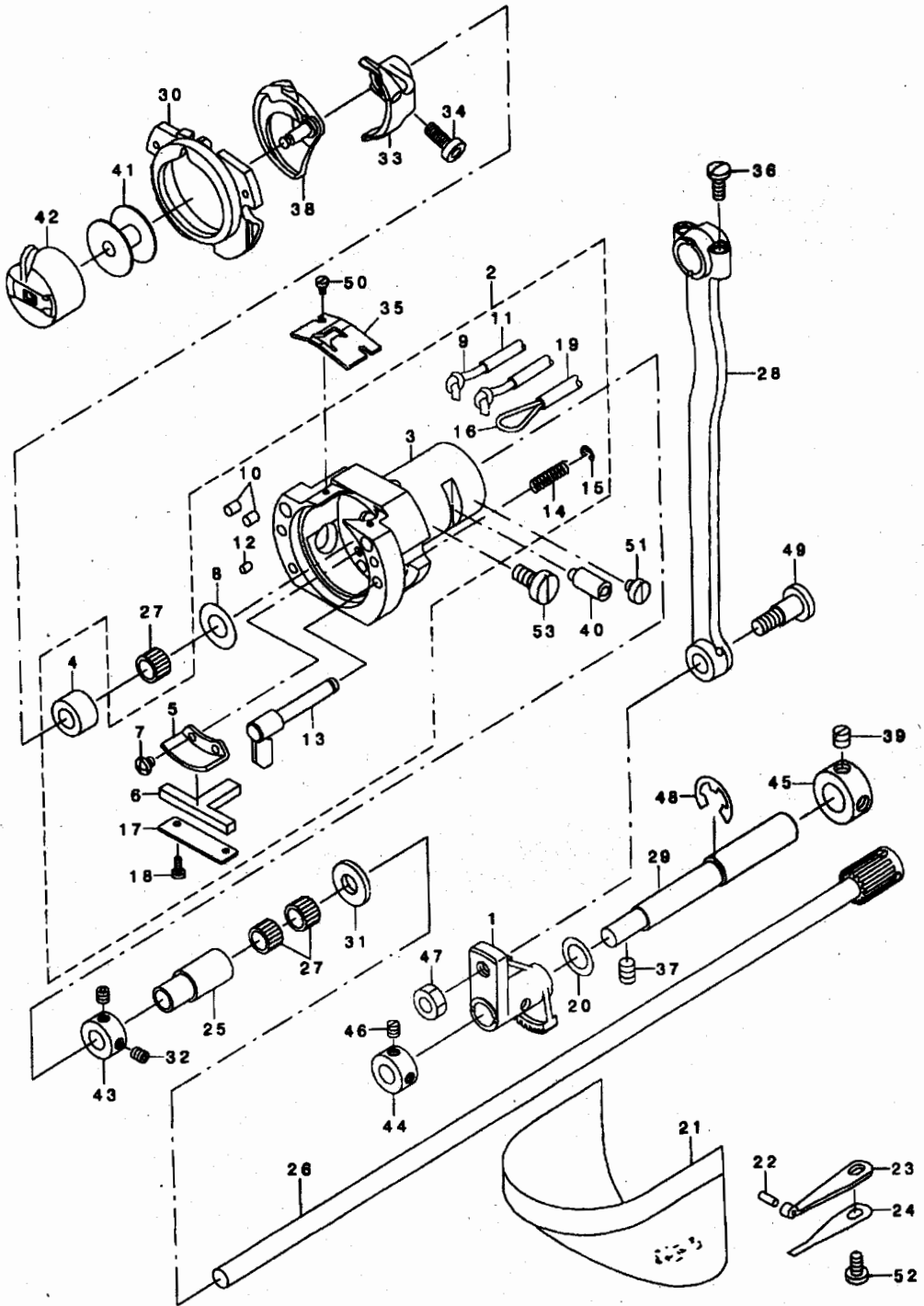


序号	件号	名称	DESCRIPTION	数量
1	501GD104	电磁铁主体	PRESSER LIFTING SOLENOID ASM.	1
2	501GH110	抬压脚传动杆	LOWERING FOOT	1
3	501GH111	抬压脚夹头	LOWERING ARM	1
4	501GH109	抬压脚定位连杆	CONNECTING LINK	1
5	501GZ108	曲柄轴	CONNECTING SHAFT	1
6	501GB126	调节弹簧钩	RETURN SPRING HOOK	1
7	501GB124	驱动板 I	LINK I	1
8	501GB123	传动板	SOLENOID LINK	1
9	501GH107	驱动板 II	LINK II	1
10	501GH106	连杆	LINK	1
11	501GH108	驱动板 III	LINK III	1
12	501GF113	曲柄轴O形圈	RUBBER RING	1
13	501GB128	挡板	PLATE	1
14	501GS124	挡板螺钉	SCREW	2
15	501GB125	松压板	PRESSER SENSOR SLIT	1
16	501GB129	感应器固定架	SENSOR INSTSLING PLATE	1
17	501GD103	传感器	PHOTO SINSOR	1
18	501GS103	端面板固定螺钉	SCREW	1
19	501GS133	缓冲块紧固钉	OIL PUMP SUPPORT	1
20	501GH112	拨线曲柄	CONNECTING ARM	1
21	501GB127	缓冲块端面板	STOPPER RUBBER SET WASHER	1
22	501GW106	拨线连杆拉簧	SPRING	1
23	501GZ106	传动销轴	MAGNET PIN	1
24	501GZ107	驱动板 I 轴	SHAFT BLOCK SHAFT	2
25	501GL105	传动杆螺钉紧固螺母	NUT	1
26	501GX105	开口销	PIN	2
27	501GS135	拨线曲柄连接螺钉	HINGD SCREW	1
28	501GS136	抬压脚传动连杆螺钉	HINGD SCREW	1
29	501GK114	驱动板 I 轴挡圈	THRUST COLLAR ASM.	2
30	501GS129	驱动板螺钉	HINGD SCREW	4
31	501GS131	驱动板 I 轴挡圈螺钉	SCREW	4
32	501GS134	抬压脚定位连杆螺钉	HINGD SCREW	2
33	501BJ114	传感器螺钉组件	SCREW	1
34	501BJ113	缓冲块组件	PRESSER LIFTING STOPPER RUBBER	1
35	501GK113	传动销轴垫圈	WASHER	2
36	501GS137	挑线曲柄内六角螺钉	SCREW	1
37	501GS137	抬压脚夹头内六角螺钉	SCREW	1
38	501GS132	松压板螺钉	SCREW	1
39	501GS130	驱动板 I 轴紧定螺钉	SCREW	2
40	501GS124	调节弹簧钩螺钉	SCREW	2
41	501GS128	电磁铁紧固螺钉	SCREW	4
42	501GS124	传感器固定架螺钉	SCREW	2



# 4. SHUTTLE DRIVER SHAFT COMPONENTS

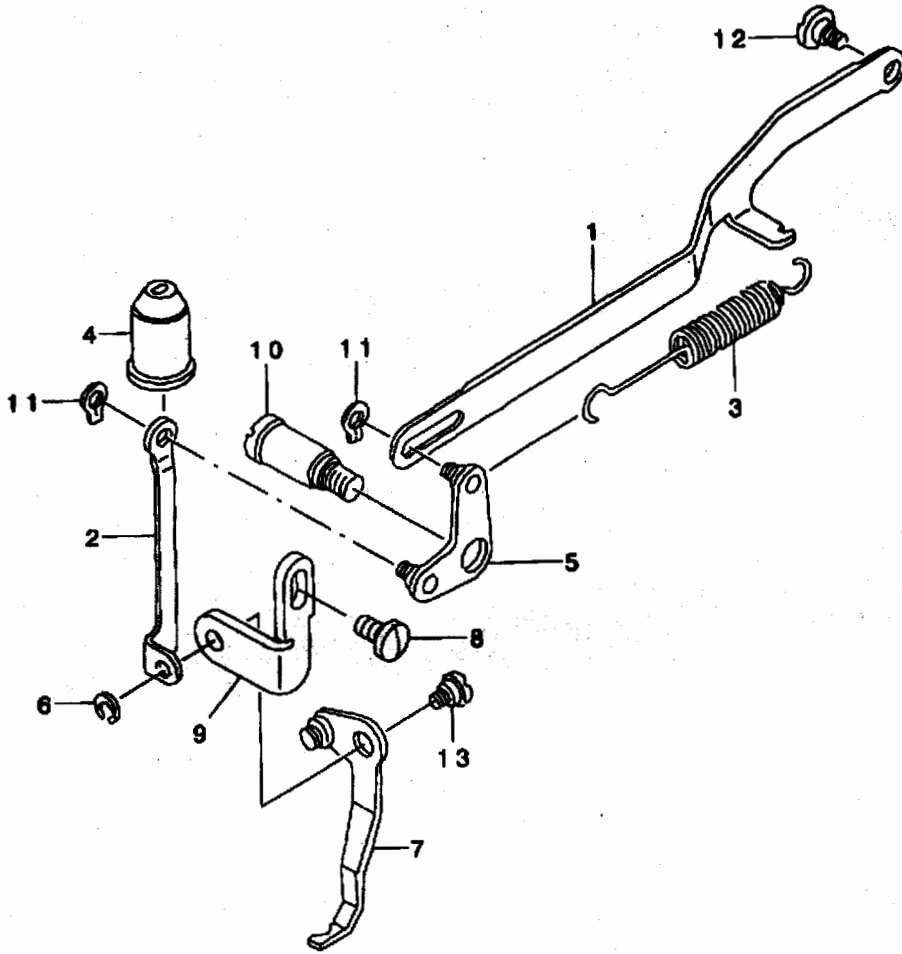
下轴部件



序号	件号	名称	DESCRIPTION	数量
1	501GC103	扇形齿轮	OSCILLATOR	1
2	501BJ115	梭床组件	SHUTTLE ASM.	1
3	501GN105	梭床	SHUTTLE	1
4	501GO108	梭床轴套	SHUTTLE NEEDLE OUTER RING	1
5	501GB133	油线夹板	SHUTTLE LUBRICATING PLATE	1
6	501GB132	油毡	SHUTTLE ONCE THROUGH OIL FELT	1
7	501GS147	油线夹板固定螺钉	SCREW	2
8	501GK128	梭床垫圈	WASHER	1
9	501GB139	梭床轴套供油线	OILWICK	1
10	501GB135	梭床边毛毡	SHUTTLE OIL FELT	2
11	501BJ118	梭床轴套供油管	VINYL PIPE	2
12	501GB134	梭床轴套圆油毡	SHUTTLE OIL FELT	1
13	501BJ116	梭床盖锁紧钩组件	INNER HOOK PRESSER ASM.	2
14	501GW109	锁紧钩弹簧	INNER HOOK PRESSER SPRING	2
15	501GK127	锁紧钩挡圈	E-RING	2
16	501GK137	回油管油线	OILWICK	1
17	501GB131	油毡压板	ONCE THROUGH OIL LFELT PRESSER	1
18	501GS146	油毡压板螺钉	SCREW	2
19	501GB138	回油油管	OIL TUBE	1
20	501GK124	扇形齿轮垫片	WASHER	1
21	501GN107	梭床罩	CYLINDER ARM CAP	1
22	501GX109	梭床罩销	HOOK COVER PRESSER SPRING PIN	1
23	501GW110	梭床罩弹簧A	HOOK COVER PRESSER SPRING	1
24	501GW108	梭床罩弹簧B	HOOK COVER PRESSER SPRING	1
25	501GO107	下轴后轴套	LOWER SHAFT REAR METAL	1
26	501BJ120	下轴组件	LOWER SHAFT GEAR A ASM.	1
27	501GU102	下轴滚针轴承	BEARING	3
28	501GH113	大连杆组件	CRANK ROD	1
29	501GZ110	偏心轴	OSCILLATING ECCENTRIC SHAFT	1
30	501BJ119	梭床盖组件	SHUTTLE RACE RING ASM.	1
31	501GK122	下轴后轴套垫片	LOWER SHAFT THRUST WASHER	1
32	501GS140	下轴后轴套挡圈螺钉	SCREW	2
33	501GN104	摆梭托	SHUTTLE DRIVER	1
34	501GS139	摆梭托螺钉	SCREW	1
35	501GW107	梭床簧	SHUTTLE UPPER SPRING	1
36	501GS141	大连杆组件螺钉	SCREW	2
37	501GS130	偏心轴紧固螺钉	SCREW	2
38	501GN103	摆梭	INNER HOOK	1
39	501GS118	偏心轴后挡圈螺钉	SCREW	2
40	501GX106	梭床调节销	SHUTTLE RACE ADJUSTING SHAFT	1
41	501GN102	梭心	BOBBIN	1
42	501GN101	梭壳	BOBBIN CASE ASM. (TACING PREVE)	1
43	501GK121	下轴后轴套挡圈	THRUST COLLAR	1
44	501GK123	偏心轴前挡圈	THRUST COLLAR	1
45	501GK126	偏心轴后挡圈	THRUST COLLAR	1
46	GS619-8	偏心轴前挡圈螺钉	SCREW	2
47	501GL106	螺母	NUT	1
48	501GK125	开口挡圈	E-RING	1
49	501GS142	扇形齿轮螺钉销	HINGE SCREW	1
50	501GS146	梭床簧螺钉	SCREW	2
51	501GS145	梭床调节销紧固螺钉	SCREW	1
52	501GS143	梭床罩紧固螺钉	SCREW	1
53	501GS144	梭床紧固螺钉	SCREW	1

## 5. WIPER MECHANISM COMPONENTS

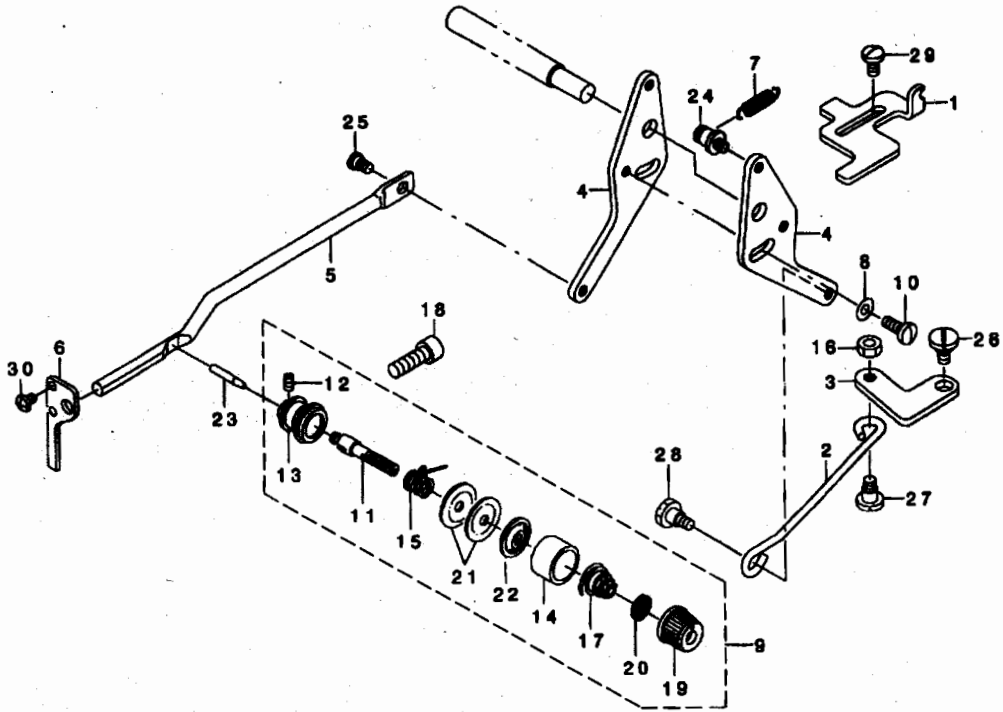
### 扫线部件



序号	件号	名称	DESCRIPTION	数量
1	501GH114	扫线调节杆	WIPER CONNECTING LINK	1
2	501GB142	扫线拉板	WIPER CONNECTING PLATE	1
3	501GW111	扫线连接板拉簧	SPRING	1
4	501GR109	扫线拉板橡胶罩	OIL SHIELD CAP	1
5	501BJ124	扫线连接板组件	WIPER CONNECTING ARM ASM	1
6	501GK129	扫线杆开口挡圈	SNAP RING	1
7	501BJ123	扫线杆组件	WIPER ASM	1
8	501GS124	扫线杆固定架螺钉	SCREW	1
9	501GB143	扫线杆固定架	WIPER BASE PLATE	1
10	501GS150	扫线连接板螺钉销	WIPER CONNECTING SCREW	1
11	501GK130	扫线连接板销挡圈	RETAINING RING	2
12	501GS151	扫线调节杆螺钉	HINGE SCREW	1
13	501GS149	扫线杆螺钉	HINGE SCREW	1

## 6. TENSION RELEASE & THREAD TENSION COMPONENTS

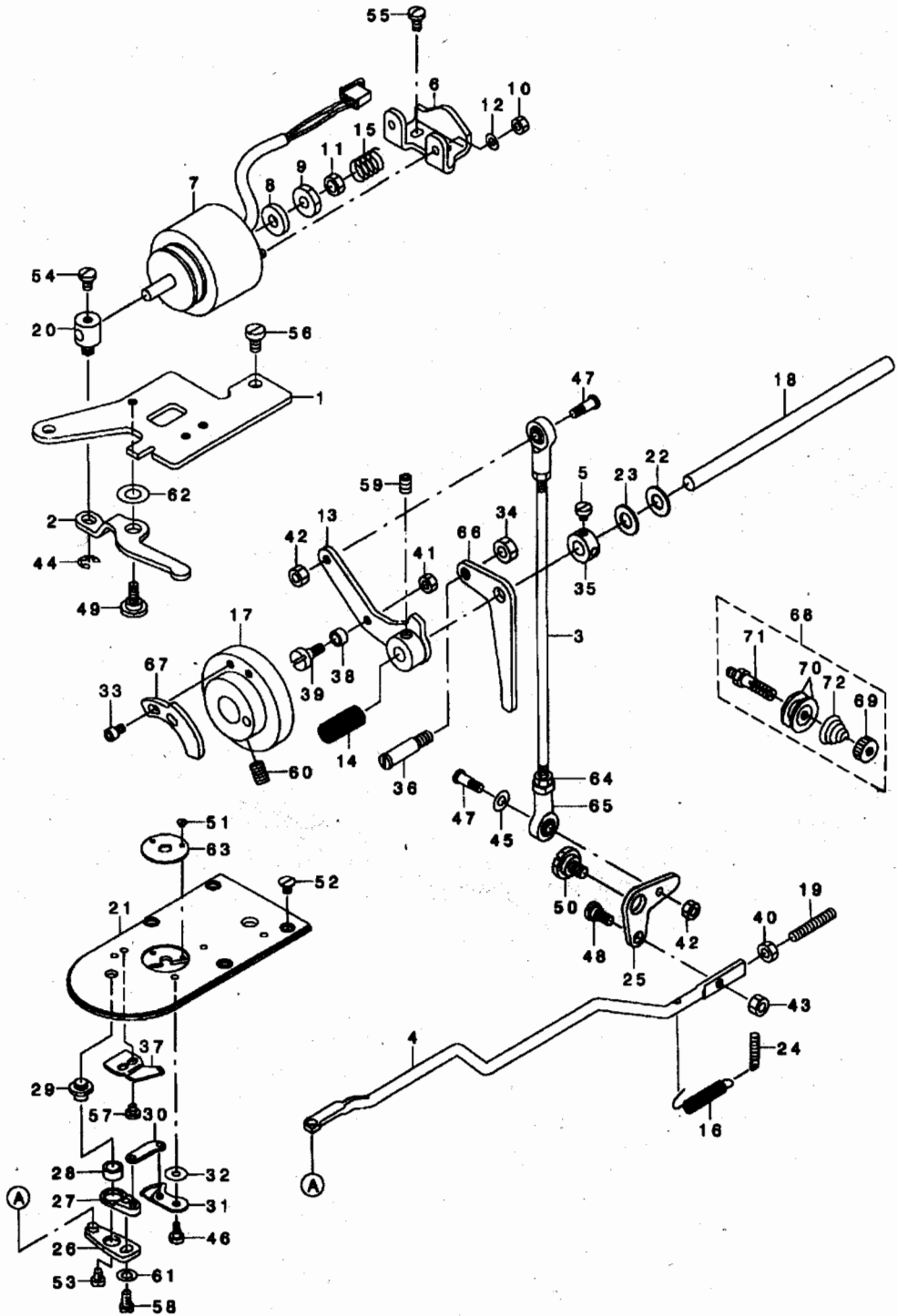
### 松线部件



序号	件号	名称	DESCRIPTION	数量
1	501GB150	复位弹簧拉板	STOPPER	1
2	501GH115	松线传动板连杆	CONNECTING BAR	1
3	501GB149	松线传动板	TENSION RELEASE LINK	1
4	501GB146	松线调节板	TENSION RELEASE ADJUSTING ARM	2
5	501GB147	松线杆	TENSION RELEASE BAR	1
6	501GB148	松线杆支架	THREAD TENSION ARM	1
7	501GW112	松线调节板复位弹簧	PRESSURE SPING	1
8	501GK131	松线调节板垫片	WASHER	1
9	501BJ125	夹线器组件	SECOND THREAD TENSION ASM	1
10	501GS152	松线调节板夹紧螺钉	SCREW	1
11	501GS159	夹线总螺钉	SECOND THREAD TENSION ROD	1
12	501GS160	夹线螺钉紧固螺钉	SCREW	1
13	501GB151	夹线器座	THREAD TENSION ROD, LARGE	1
14	501GB153	夹线簧座	THREAD TENSION DISK PRESSER	1
15	501GW113	挑线簧	THREAD TAKE-UP SPRING	1
16	501GL107	松线传动板螺母	NUT	1
17	501GW114	夹线簧	THREAD TENSION SPRING	1
18	501GS158	夹线器紧固螺钉	SCREW	1
19	501BJ126	夹线螺母	THREAD TENSION NUT	1
20	501GB154	夹线制动板	ROTATING STOPPER	1
21	501GB114	夹线板	THREAD TENSION DISK	2
22	501GB152	松线板	THREAD TENSION DISK PRESSER	1
23	501GX112	松线钉	TENSION RELEASE PIN	1
24	501GS153	松线调节板螺钉销	SUSPENSION SCREW	1
25	501GS151	松线杆螺钉	HINGE SCREW	1
26	501GS154	松线传动板紧固螺钉	HINGE SCREW	1
27	501GS155	松线传动板连接螺钉	HINGE SCREW	1
28	501GS156	松线传动板连杆螺钉	HINGE SCREW	1
29	501GS157	复位弹簧拉板螺钉	SCREW	2
30	SS-4090540	松线杆支架螺钉	SCREW	2

# 7. TENSION RELEASE & THREAD TRIMMER MECHANISM COMPONENTS

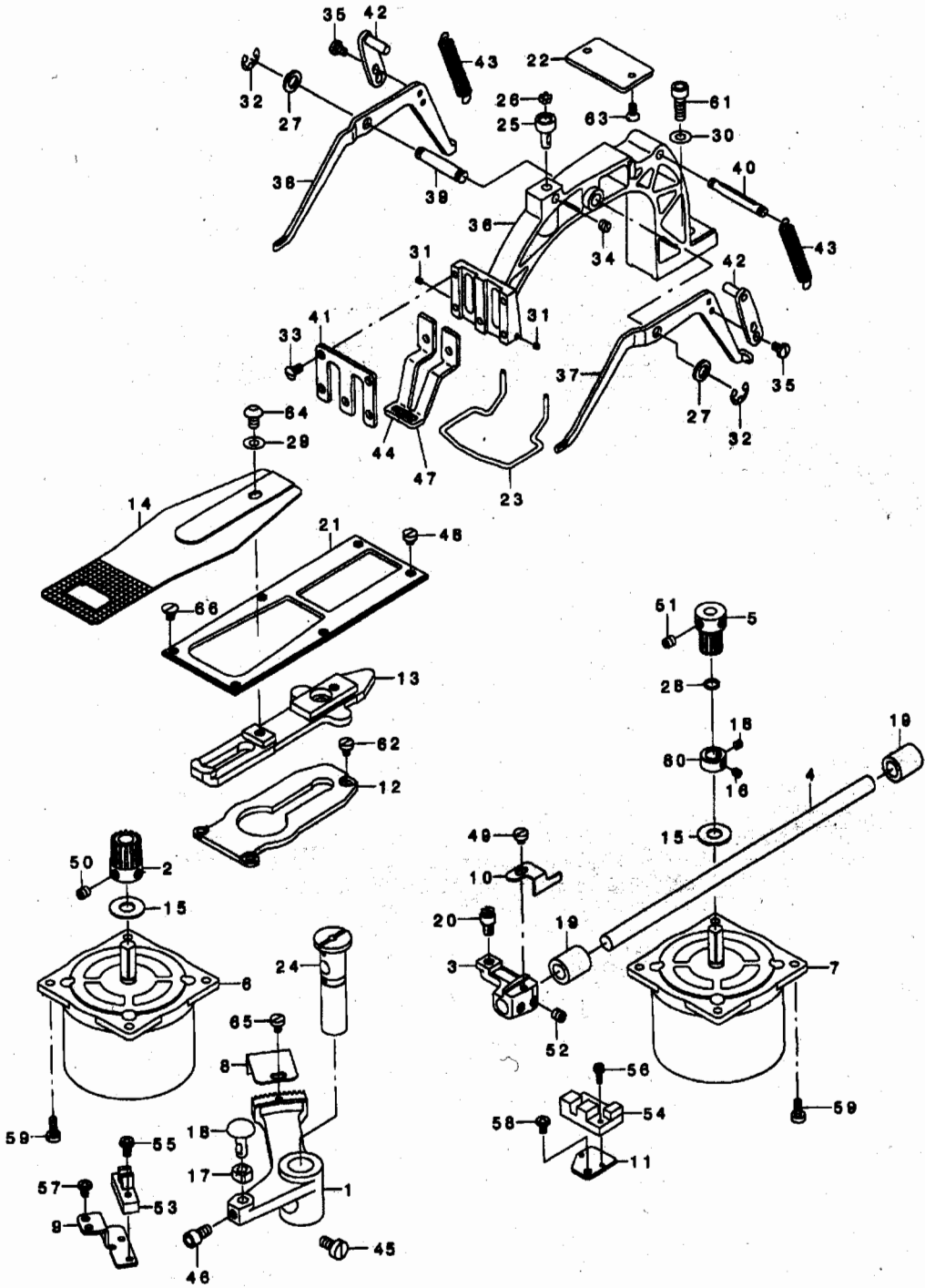
## 剪线部件



序号	件号	名称	DESCRIPTION	数量
1	501GB156	曲柄杆加油板	CAM FOLLOWER STOPPER	1
2	501GB159	剪线推动板	SOLENOID ARM	1
3	501GH116	剪线连杆	CONNECTING ROD	1
4	501GH118	剪线刀传动杆	CONNECTING BAR	1
5	501GS131	剪线轴轴套螺钉	SCREW	2
6	501GB161	内电磁铁固定板	SOLENOID INSTALLING BASE	1
7	501GD105	内电磁铁	SOLENOID FOR THREAD TRIMMING	1
8	501GK141	内电磁铁垫圈A	SOLENOID RUBBER	1
9	501GL112	内电磁铁止动螺母A	NUT	1
10	501GL114	内电磁铁螺母	NUT	2
11	501GL113	内电磁铁止动螺母B	NUT	1
12	501GK141	内电磁铁垫圈	WASHER	2
13	501BJ128	凸轮从动器组件	CAM FOLLOWER ASM	1
14	501GW115	剪线弹簧	TAIPPING LEVER TENSION SPRING	2
15	501GW118	内电磁铁弹簧	SPRING	1
16	501GW116	剪线刀传动杆拉簧	THREAD TRIM LINK SPRING	1
17	501GT101	凸轮	THREAD TRIMMER CAM	1
18	501GZ113	剪线轴	THREAD TRIMMER SHAFT	1
19	501GS169	剪线刀传动杆止动螺钉	SCREW	1
20	501GB158	电磁铁传动块	SOLENOID PIN	1
21	501GM101	针板	NEEDLE PLATE	1
22	501GK132	剪线轴垫圈A	NEEDLE ROD CRANK WASHER	1
23	501GK133	剪线轴垫圈B	CLOTH PLATE WASHER	1
24	501GS168	拉簧调节螺钉	TENSION SPRING ADJUSTING SCREW	1
25	501GH117	剪线连杆	THREAD TRIMMER LINK	1
26	501BJ131	动刀传动杆分组件	THREAD CUTTER LEVER ASM., LARG	1
27	501BJ132	动刀曲柄分组件	THREAD CUTTER LEVER ASM., SMAL	1
28	501GO109	动刀杆销衬套	THREAD CUTTING LEVER RING	1
29	501GS173	动刀杆定位螺钉	THREAD CUTTERLEVER SHAFT	1
30	501GH119	动刀连杆	MOVING KNIFE LINK	1
31	501BJ133	动刀分组件	MOVING KNIFE ASM.	1
32	501GK139	动刀调整垫圈	MOVING KNIFE WSHER A	1
33	501GS163	松线卡头固定螺钉	SCREW	2
34	501GL105	松线销螺母	NUT	1
35	501GK134	剪线轴挡圈	THRUST COLLAR ASM.	1
36	501GX113	松线销	TENSION RELEASE ARM PIN	1
37	501GB160	定刀	FIXING KNIFE	1
38	501GU108	剪线凸轮滚柱	ROLLER	1
39	501GS161	滚柱螺钉	ROLLER SHAFT	1
40	501GL110	剪线刀传动杆止动螺母	NUT	1
41	GL216-8	滚柱螺母	NUT	1
42	GL216-8	剪线连杆螺母	NUT	2
43	501GL107	剪线传动杆连接螺母	NUT	1
44	501GK135	电磁铁传动块挡圈	E-RING	1
45	501GK137	剪线连杆垫圈	WASHER	1
46	501GS174	动刀定位螺钉	HINGE SCREW	1
47	501GS165	剪线连杆螺钉	HINGE SCREW	2
48	501GS166	剪线刀传动杆螺钉	HINGE SCREW	1
49	501GS164	剪线推动板螺钉	HINGE SCREW	1
50	501GS193	剪线曲柄螺钉	HINGE SCREW	1
51	501GS175	小针板螺钉	SCREW	2
52	501GS170	针板固定螺钉	SCREW	4
53	501GS172	传动杆螺钉	SCREW	1
54	GS540-8	电磁铁传动块紧固螺钉	SCREW	1
55	501GS177	内电磁铁固定板螺钉	SCREW	2
56	501GS162	曲柄加油板固定螺钉	SCREW	2
57	501GS171	定刀定位螺钉	SCREW	2
58	GS540-8	动刀传动杆固定螺钉	SCREW	1
59	501GS130	偏心轴紧固螺钉	SCREW	1
60	SS-7161040	凸轮螺钉	SCREW	2
61	501GK138	动刀传动杆垫圈	WASHER	1
62	501GK136	剪线推动板垫圈	WASHER	1
63	501GM102	小针板	NEEDLE HOLE GUIDE	1
64	501GL109	剪线连杆螺母	NUT	1
65	501BJ130	万能接头组件	TIE-IN ASM.	2
66	501GB155	剪线曲柄板手	THREAD RELEASE ARM	1
67	501GB157	松线卡头	TENSION RELEASE NOTCH	1
68	501BJ127	夹线组件	FIRST THREAD TENSION ASM	1
69	501GL111	夹线螺母	TENSION NUT, NO.1	1
70	501GB114	夹线板	THREAD TENSION DISK	2
71	501GS176	夹线器螺钉	THREAD TENSION ROD	1
72	501GW117	夹线器簧	FIRST THREAD TENSION SPRING	1

# 8. FEED MECHANISM COMPONENTS

送料部件

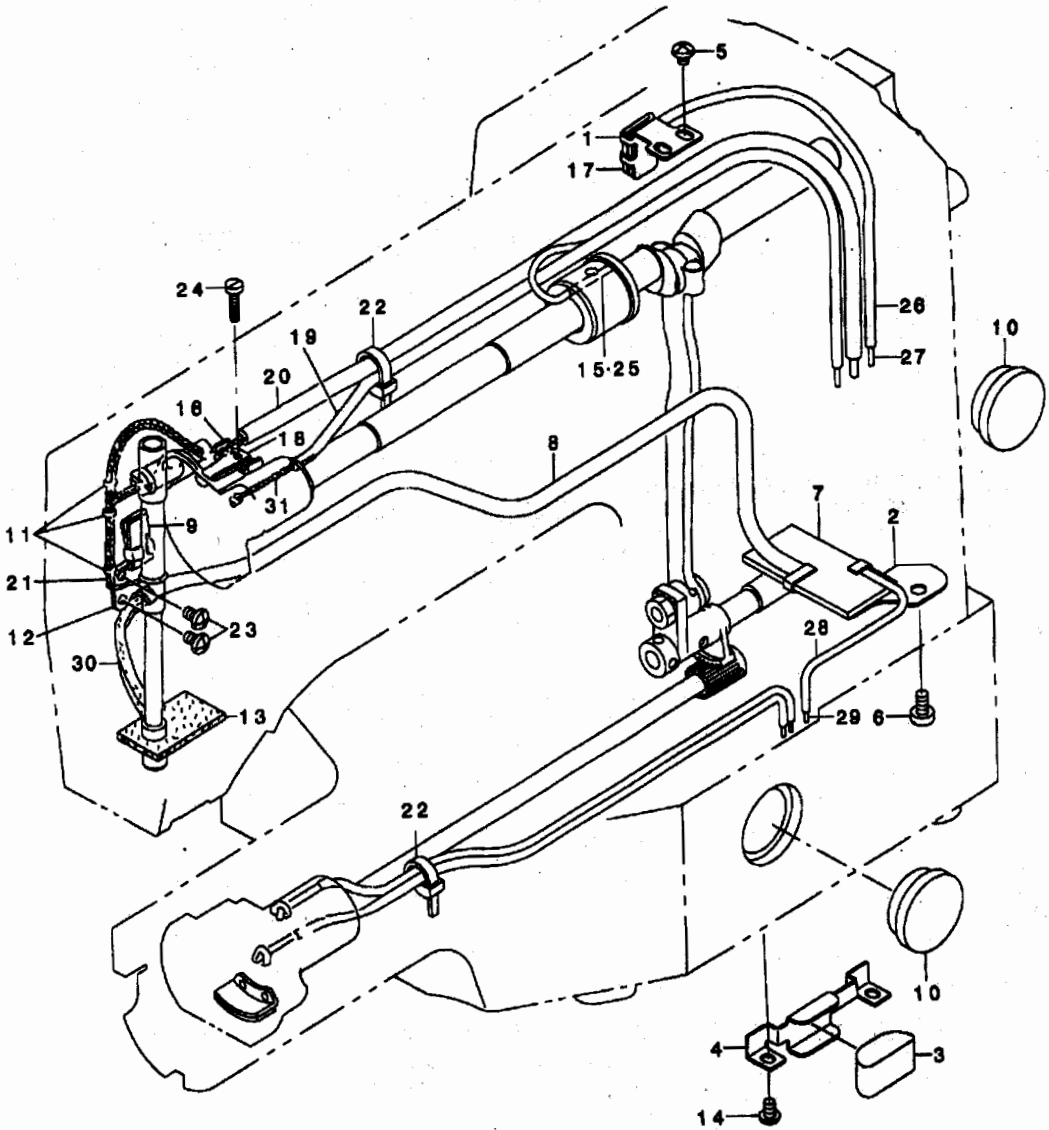


序号	件号	名称	DESCRIPTION	数量
1	501GC105	X向杠杆齿轮	CROSSFEED ARM	1
2	501GC106	X轴电机齿轮	CROSSFEED GEAR	1
3	501GB170	Y向驱动轴夹头	LENGTHWISE FEED ARM	1
4	501GZ114	Y向驱动轴	LENGTHWISE FEED SHAFT	1
5	501GC107	Y向电机齿轮	LENGTHWISE FEED GEAR	1
6	501GD106	X轴步进电机	X FEED STEPPING MOTOR	1
7	501GD107	Y轴步进电机	Y FEED STEPPING MOTOR	1
8	501GD108	X向传感片	CROSSFEED SENSOR SLIT	1
9	501GB171	X轴传感器固定架	SENSOR INSTALING BASE	1
10	501GD109	Y向传感片	LENGTHWISE FEED SENSOR SLIT	1
11	501GB165	Y向传感器固定架	SENSOR INSTALLING BASE	1
12	501GB168	送料托架支承板	CLOTH FEED SUPPORT PLATE	1
13	501GB169	送料托架	CLOTH FEED PLATE	1
14	501GM117	送料板	FEED PLATE A	1
15	501GF114	电机橡胶垫	RUBBER WASHER	2
16	501GS185	Y电机挡圈螺钉	SCREW	2
17	501GU101	X向滑块	SQUARE BLOCK	1
18	501GZ117	X向滑块轴	SLIDE BLOCK STUD	1
19	501GO111	Y向驱动轴轴套	BUSHING, REAR	2
20	501GS180	Y向轴夹头铰轴	HINGE STUD	1
21	501GR110	盖板	CLOTH FEED PRESSER PLATE	1
22	501GB168	送料架支承板	SUPPORT PLATE	1
23	501GB175	护手圈	FINGER GUARDE	1
24	501GZ115	X向铰轴	FEED DRIVING ARM SHAFT	1
25	501GZ116	钢球座	BALL RETAINER	1
26	501GB166	钢球	WORK CLAMP FOOT MONTING BASE	7
27	501GK144	提升架轴垫圈	WASHER FOR DRIVING ARM	2
28	501GF115	Y电机O形圈	RUBBER RING	1
29	501GK142	送料板紧固螺钉垫圈	WASHER	1
30	501GK142	送料架紧固螺钉垫圈	WASHER	1
31	GS380-8	护手圈螺钉	SCREW	2
32	501GK145	提升轴挡圈	E-RING	2
33	501GS188	面板螺钉	SCREW	5
34	501GS182	钢球座螺钉	SCREW	1
35	GS540-8	压脚提升导板螺钉	SCREW	4
36	501GB172	送料架	FEED BRACKET	1
37	501GB173	右压脚提升架	LIFTING LEVER, RIGHT	1
38	501GB174	左压脚提升架	LIFTING LEVER, LEFT	1
39	501GZ119	提升架轴	LIFTING LEVER SHAFT	1
40	501GZ118	拉簧支轴柱	SPRING SUSPENSION	1
41	501GB176	压脚面板	WORK CLAMP FOOT FACE PLATE	1
42	501BJ135	压脚提升导板组件	LEVER DRIVING PLATE ASM	2
43	501GW119	提升架拉簧	CLOTH PRESSER SPRING	2
44	501GM104	右压脚	WORK CLAMP FOOT, RIGHT	1
45	501GS144	X向铰轴螺钉	SCREW	1
46	501GS181	X向滑块轴螺钉	SCREW	1
47	501GM103	左压脚	WORK CLAMP FOOT, LEFT	1
48	501GS178	盖板螺钉	SCREW	1
49	501GS186	Y向传感片螺钉	SCREW	1
50	501GS122	X向电机齿轮螺钉	SCREW	2
51	501GS122	Y向电机齿轮螺钉	SCREW	2
52	501GS187	Y向驱动轴夹头螺钉	SCREW	2
53	501GD110	X轴传感器	PHOTO SENSOR	1
54	501GD103	Y轴传感器	PHOTO SENSOR	1
55	501BJ111	X轴传感器螺钉组件	SCREW	1
56	501BJ114	Y轴传感器螺钉组件	SCREW	1
57	501GS178	X轴传感器固定架螺钉	SCREW	2
58	501GS178	Y轴传感器固定架螺钉	SCREW	1
59	501GS108	步进电机螺钉	SCREW	8
60	501GK143	Y电机挡圈	THRUST COLLAR	1
61	501GS137	送料架固定螺钉	SCREW	1
62	501GS103	送料托架支承板螺钉	SCREW	3
63	501GS183	送料架支承板螺钉	SCREW	2
64	501GS184	送料架架紧固螺钉	SCREW	1
65	501GS103	X向传感片螺钉	SCREW	1
66	501GS179	盖板螺钉	SCREW	4



# 9. LUBRICATION COMPONENTS

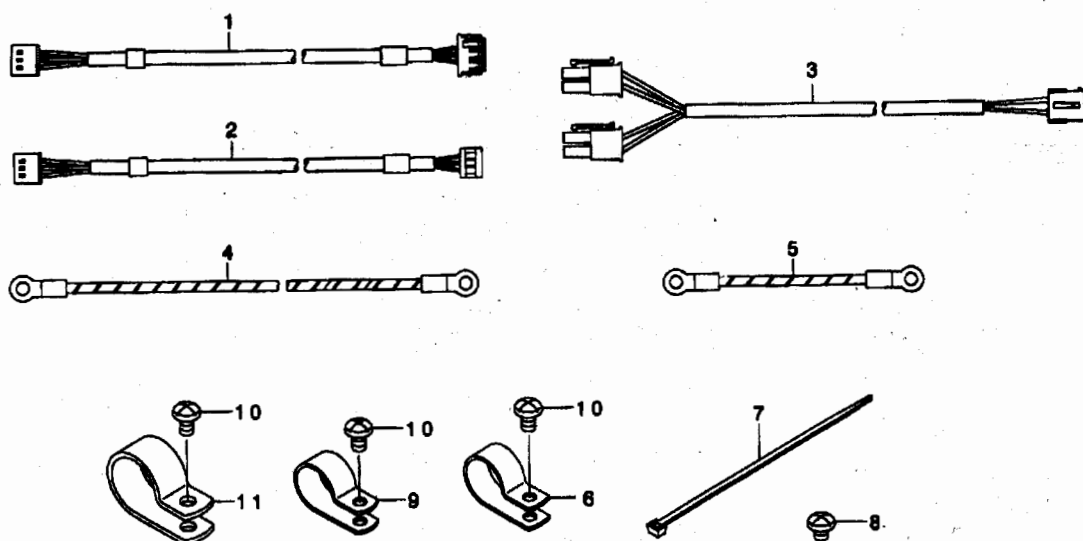
供油部件



序号	件号	名称	DESCRIPTION	数量
1	501GB190	连杆供油安装板	OIL SHIELD	1
2	501GB186	回油油毡固定板	OIL SHIELD	1
3	501GB178	底板防漏油油毡	OIL FELT	1
4	501GB179	底板防漏油油毡安装板	FELT PRESSER	1
5	501GS178	连杆供油安装板螺钉	SCREW	2
6	501GS178	回油油毡固定板螺钉	SCREW	1
7	501GB185	下轴大油毡	OIL FELT	1
8	501GB184	回油大油管	ONCE THROUGH OIL FELT	1
9	501GB196	小连杆供油油毡	OIL SPONGE	1
10	501BJ139	油窗组件	OIL GAUGE	2
11	501GB201	油线夹头	OIL WICK PRESSER	3
12	501GB197	机头供油安装板	OIL WICK PRESSER	1
13	501GB180	针杆轴套油毡	FACE FELT	1
14	501GS178	底板防漏油油毡安装板螺钉	SCREW	2
15	501GB194	中轴套供油油管	OIL WICK	1
16	501GB199	曲柄供油安装板	BALANCE LLUBRICATING PLATE	1
17	501GB189	连杆供油油毡	NEEDLE ROD CRANK LUBRICATIN	1
18	501GB200	曲柄供油油毡	BALANCE LLUBRICATING	1
19	501GB181	前轴套供油油管	VINYL TUBE	1
20	501GB184	回油大油管	VINYL PIPE	1
21	501GB202	机头供油油线	OIL WICK	1
22	501GA109	电线自锁夹	CABLE BAND	2
23	501GS178	机头供油安装板螺钉	SCREW	2
24	501GS189	油毡固定板螺钉	SCREW	1
25	501GB193	中轴套供油油线	OIL WICK	1
26	501GB192	连杆供油油管	VINYL TUBE	1
27	501GB191	连杆供油油线	OIL WICK	1
28	501GB187	下轴轴套供油油管	VINYL TUBE	1
29	501GB188	下轴轴套供油油线	OIL WICK	1
30	501GB185	下轴大油毡	OIL FELT	1
31	501GB182	前轴套供油油线	OIL WICK	1

## 10. SENSOR&EXTENSION CABLE COMPONENTS

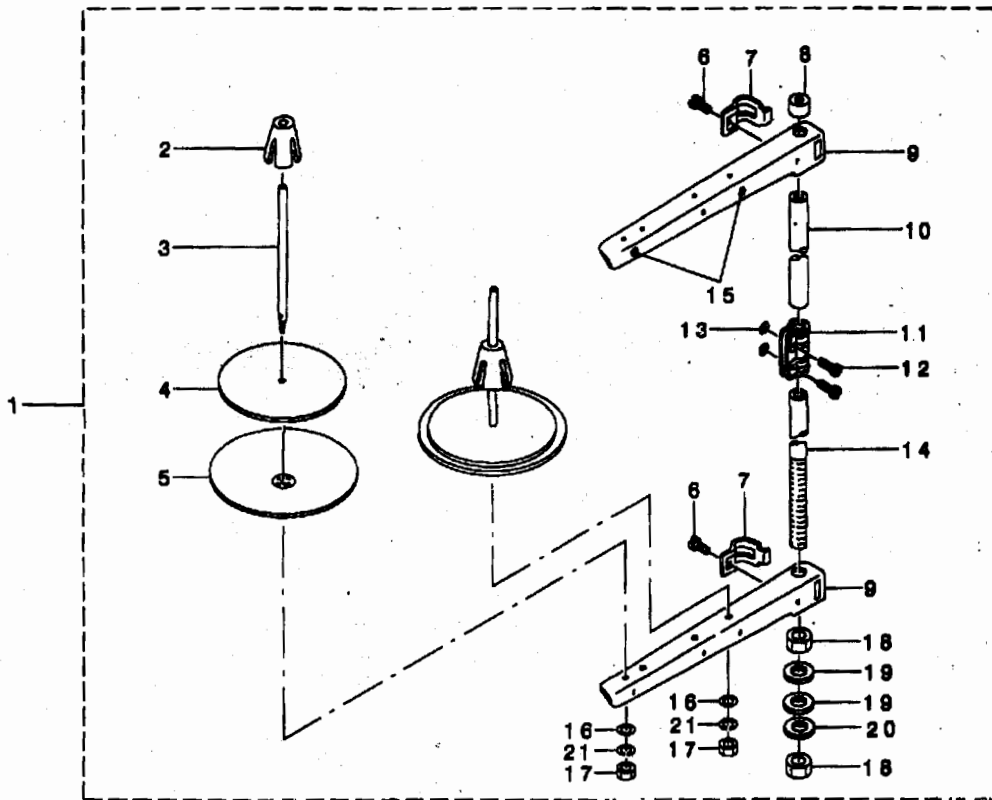
### 传感器部件



序号	件号	名称	DESCRIPTION	数量
1	501GD101	上轴传感器接线	UPPER SHAFT SENSOR CABLE ASM.	1
2	501GD113	电磁铁传感器接线	OUTER PRESSER SENSOR CABLE ASM.	1
3	501GD111	XY轴传感器接线	XY SENSOR CABLE ASM.	1
4	501GD114	长接地电线	HEAD GROUND CABLE A ASM.	1
5	501GD115	短接地电线	HEAD GROUND CABLE B ASM.	1
6	501GB204	夹头	CABLE CLIP	1
7	501GA109	电线自锁夹	CABLE BAND	1
8	501GS178	接地电线螺钉	SCREW	3
9	501GB204	夹头	CABLE CLIP	1
10	501GS178	夹头螺钉	SCREW	3
11	501GB204	夹头	CABLE CLIP	1

# 11. THREAD STAND COMPONENTS

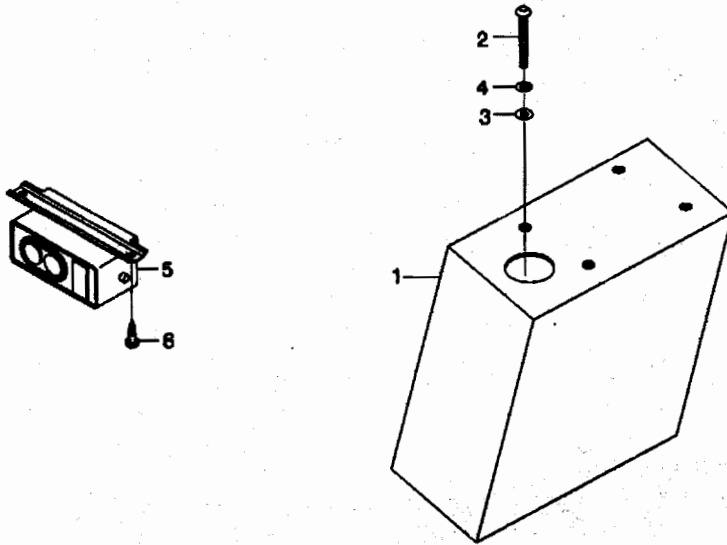
## 线架部件



序号	件号	名称	DESCRIPTION	数量
1	GR760/35-8	过线架部件	THREAD STAND ASM	1
2	GR721-8	线团防松垫	SPOOL RETAINER	2
3	GS370-8	线盘钉	SPOOL PIN	2
4	GR750-8	线盘软垫	SPOOL REST CUSHION	2
5	GR720-8	线盘	SPOOL REST	2
6	GS369-8	线架过线夹螺钉	SCREW	2
7	GR716-8	线架过线夹	THREAD GUIDE ARM JOINT	2
8	GR713-8	线架杆顶防护橡皮	SPOOL REST ROD RUBBER CAP	1
9	GR715-8	线架过线杆	SPOOL REST ARM	2
10	GZ241-8	线架杆上节	SPOOL REST ROD, UPPER	1
11	GR714-8	接架杆接头	SPOOL REST ROD JOINT	1
12	GS401-8	接架杆接头螺钉	SCREW	2
13	GL134-8	接架杆接头螺母	NUT	2
14	GZ240-8	线架杆下节	SPOOL REST ROD, LOWER	1
15	GR717-8	过线圈	THREAD GUIDE	2
16	GR718-8	线盘钉弹簧垫	SPRING WASHER	2
17	GL172-8	线盘钉螺母	NUT	2
18	GL173-8	线架杆紧固螺母	NUT	2
19	GR722-8	线架杆紧固螺母垫圈	WASHER	2
20	GR723-8	紧固螺母弹簧垫圈	SPRING WASHER	1
21	GR719-8	线盘钉垫圈	WASHER	2

## 12. CONTROL BOX COMPONENTS

电控部件

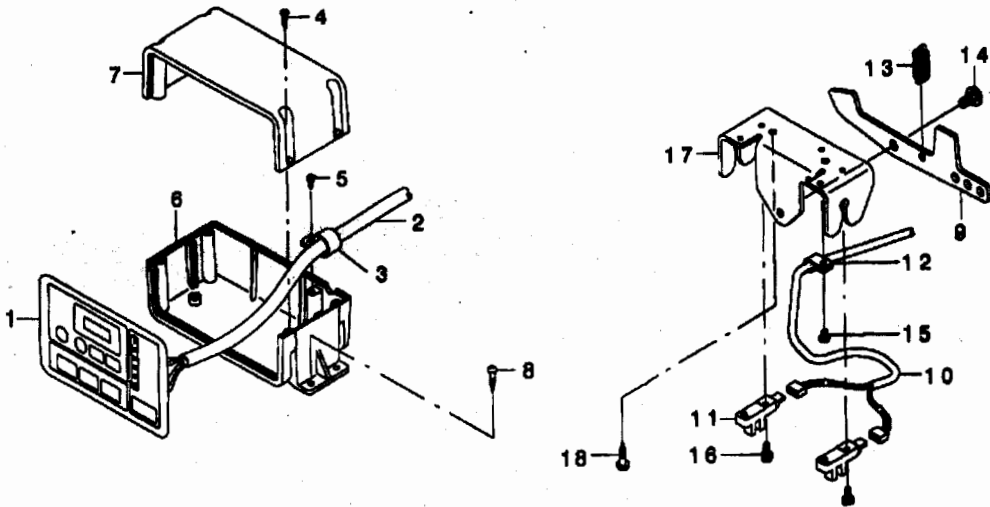


序号	件号	名称	DESCRIPTION	数量
1	501GD121	电控箱	CONTROL BOX	1
2	501GS194	电控箱螺钉	SCREW	4
3	501GK148	电控箱螺钉垫片	WASHER	4
4	501GK149	电控箱螺钉弹簧垫片	SPRING WASHER	4
5	501GD122	开关	SWITCH	1
6	501GS105	开关木螺钉	WOOD SCREW	2

注：电控箱零件目录见附本。

### 13. OPERATION BOX & PEDAL COMPONENTS

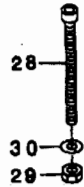
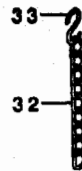
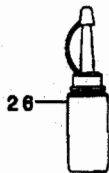
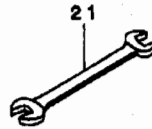
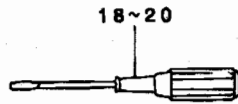
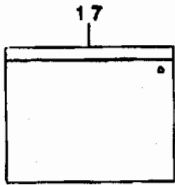
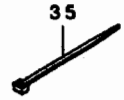
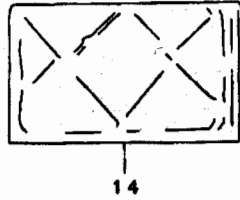
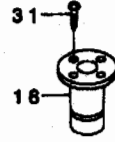
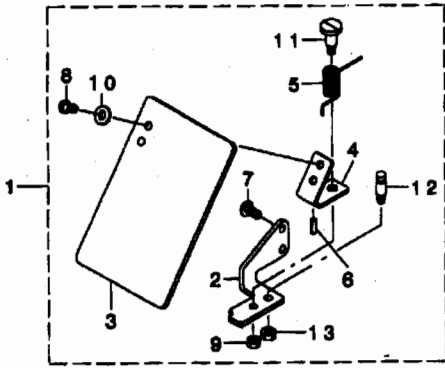
#### 操作箱与踏脚部件



序号	件号	名称	DESCRIPTION	数量
1	501GD119	操作板	OPERATION PANEL PLATE	1
2	501GD120	操作箱电线	OPERATION BOX CABLE ASM.	1
3	501GB204	夹头	CABLE CLIP	1
4	501GS167	操作箱配合螺钉	SCREW	4
5	501GS167	操作箱电线紧固螺钉	SCREW	1
6	501GD118	操作箱下	OPEARTION BOX UP	1
7	501GD117	操作箱上	OPEARTION BOX DOWN	1
8	501GS105	操作箱定位螺钉	SCREW	4
9	501GB205	踏脚开关	PEDAL SWITCH FRAME	1
10	501GD117	踏脚部分传感器接线	PEDAL SWITCH CABLE ASM.	1
11	501GD110	传感器	PHOTO SENSOR	2
12	501GB204	夹头	CABLE CLIP	1
13	501GW120	踏脚开关弹簧	SPRING	1
14	501GS191	踏脚开关螺钉	HINGE SCREW	1
15	501GS178	SL型夹头螺钉	SCREW	1
16	501BJ111	传感器螺钉组件	SCREW ASM.	2
17	501GB206	踏脚开关架	PEDAL SWITCH FRAME	1
18	501GS105	踏脚开关木螺钉	SCREW	2

# 14. ACCESSORIE PART COMPONENTS

附件

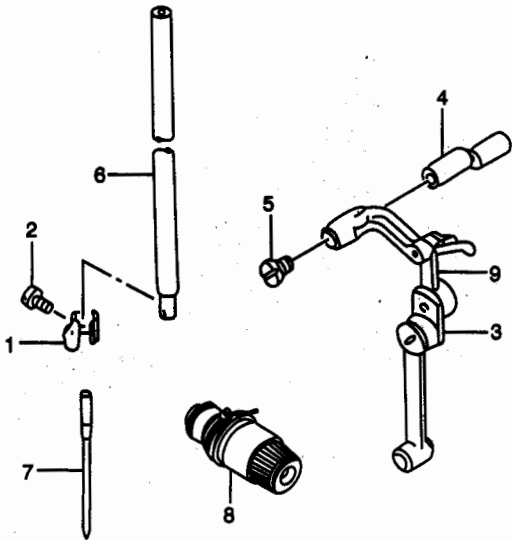


序号	件号	名称	DESCRIPTION	数量
1	501BJ141	眼睛防护罩组件	SAFETY PLATE ASM.	1
2	501GB207	安全座板	SAFETY PLATE INSTALLING BASE	1
3	501GB208	安全板	SAFETY PLATE	1
4	501GB209	安全板架	SAFETY PLATE INSTALLING PLATE	1
5	501GW121	弹簧	SAFETY PLATE RETURN SPRING	1
6	501GX118	弹性圆形销	SPRING PIN	1
7	501GS178	螺钉	SCREW	2
8	501GS178	螺钉	SCREW	2
9	501GL104	螺母	NUT	1
10	501GK147	垫片	WASHER	2
11	501GS192	螺钉轴	HINGE SCREW	1
12	501GX117	弹簧复位销	TENSION SPRING RACK	1
13	501GL115	螺母	NUT	1
14	501GR111	机头罩	VINYL COVER	1
15	501GN102	梭心	BOBBIN	1
16	501GA103	油杯座	OIL MANAGEMENT	1
17	501GA101	机头塑料膜	ACCESSORY BOX	1
18	GR700-8	大螺丝刀	SCREW DRIVER, LARGE	1
19	GR701-8	中螺丝刀	SCREW DRIVER, MIDDLE	1
20	GR702-8	小螺丝刀	SCREW DRIVER, SMALL	1
21	501GA107	呆扳手 (9x10)	WRENCH	1
22	501GA102	油杯	OIL CAN	1
23	501GA108	内六角螺钉 3	HEXAGONAL WRENCH, SMALL	1
24	501GA108	内六角螺钉 4	HEXAGONAL WRENCH, LARGE	1
25	501GA108	内六角螺钉 5	HEXAGONAL SPANNER	1
26	B.10-52	油瓶	OILER	1
27	501GV101	机针	NEEDLE DPX5 (#16)	4
28	501GS107	固定架螺钉	HEXAGONAL-HOLE BOLT	1
29	501GL102	螺母	NUT	1
30	501GK104	垫片	WASHER	1
31	501GS167	油杯座木螺钉	SCREW	4
32	B.10-47	链条	CHAIN	1
33	B.10-48	链钩	S SHAPED HOIOK	1
34	501GX107	电线固定钉	CORD STAPLE	7
35	501GA109	电线自锁夹	CABLE BAND	4



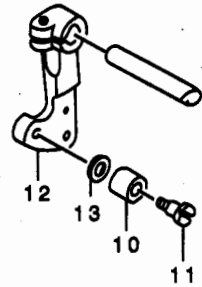
### MAIM SHAFT & NEEDLE BAR COMPONENTS

ZJ1903-301: 挑线刺布部件



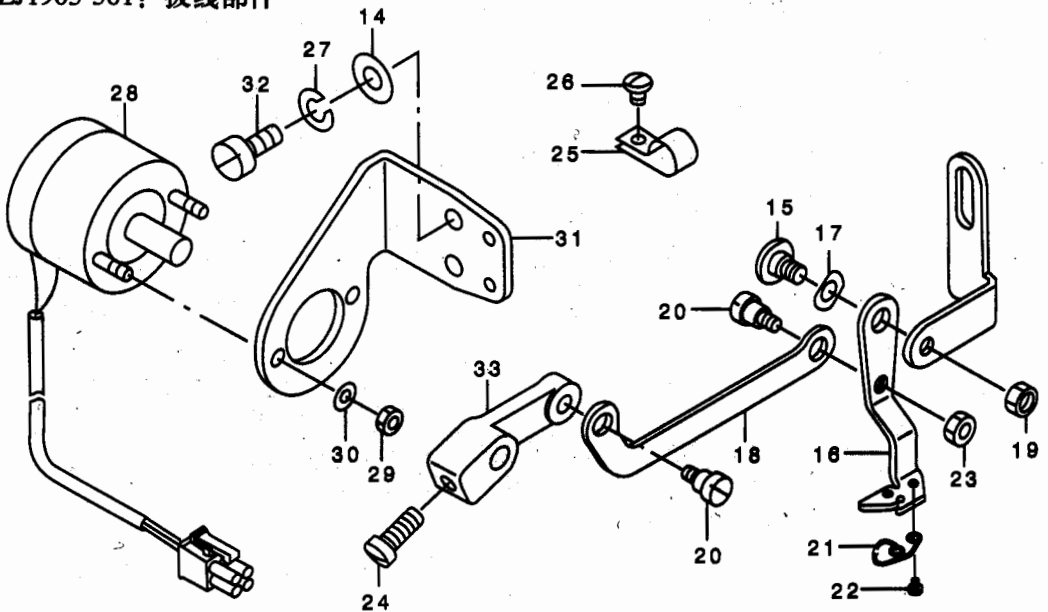
### PRESSER LIFTER COMPONENTS

ZJ1903-301: 电磁铁部件



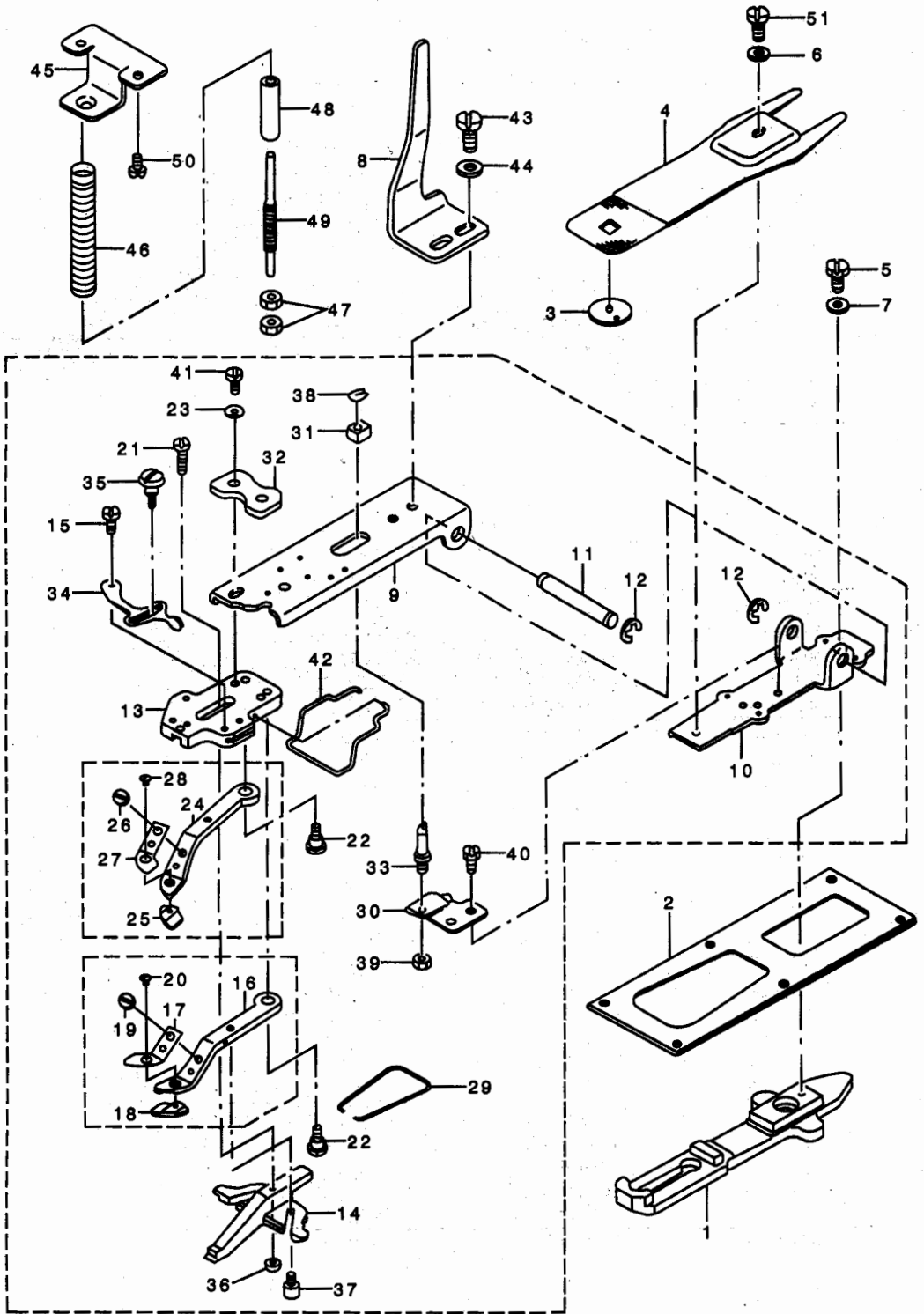
### WIPER MECHANISM COMPONENTS

ZJ1903-301: 拨线部件



序号	件号	名称	DESCRIPTION	数量
1	502GB102	针杆线勾	NEEDLE BAR THREAD GUIDE	1
2	502GS101	机针螺钉	SCREW	1
3	502GH101	挑线曲柄	NEEDLE ROD CRANK	1
4	502GZ101	偏心轴	LINK TAKE-UP LEVER PIN, HEAV	1
5	502GS102	偏心轴螺钉	SET SCREW	1
6	502GO101	针杆	NEEDLE BAR	1
7	502GV101	机针	NEEDLE	1
8	502BJ102	夹线器组件	TENSION CONTROLLER ASM	1
9	502BJ101	挑线杆组件	THREAD TAKE-UP LEVER	1
10	502GK102	拨线曲柄滚子	STOP MOTION TRIPPING LEVER CA	1
11	502GS103	拨线曲柄螺钉	HINGE SCREW	1
12	502GH103	拨线曲柄	CONNECTING ARM	1
13	502GK101	拨线曲柄垫片	HOOK SHARFT WASHER	2
14	501GK147	扫线电磁铁固定板垫片	WASHERR	2
15	502GS106	扫线杆螺钉	HINGE SCREW	1
16	502GB103	扫线杆	WIPER	1
17	502GK111	扫线杆垫圈	WAAVE WASHER	1
18	502GH104	扫线连杆	WIPER LINK	1
19	501GL107	扫线杆螺母	NUT	1
20	502GS105	扫线连杆螺钉	HINGE SCREW	2
21	502GW101	扫线杆弹簧	SPRING	1
22	502GS104	扫线杆弹簧螺钉	SCREW	2
23	502GL104	扫线连杆螺母	NUT	1
24	GS340-8	扫线曲柄螺钉	SCREW	1
25	502GD102	电线夹头	CABLE CLIP	3
26	101GS174	电线夹头螺钉	SCREW	3
27	502GK103	扫线电磁铁固定板开口垫片	SPING WASHER	1
28	502GD101	扫线电磁铁	SOLENOID FOR WIPER ASM.	1
29	502GL101	扫线电磁铁螺母	NUT	2
30	502GK104	扫线电磁铁垫片	SPRING WASHER	2
31	502GB104	扫线电磁铁固定板	SOLENOID FITTING PLATE	1
32	GS328-8	扫线电磁铁固定板螺钉	SCREW	2
33	502GH105	扫线曲柄	WIPER ARM	1
34	502GW102	Y轴驱动轴弹簧	SPRING	1

**FEED MECHANISM COMPONENTS**  
**ZJ1903-301: 送料部件**



序号	件号	名称	DESCRIPTION	数量
1	502GB105	送料托架	CLOTH FEED PLATE	1
2	502GR101	盖板	FEED PLATE PRESSER PLATE	1
3	502GM101	小针板	GUIDE	1
4	502GM102	送料板	PRESSURE PLATE	1
5	502GS108	送料板座螺钉	SCREW	1
6	502GK105	送料牙螺钉垫圈	WASHER	1
7	502GK142	送料板座螺钉垫片	WASHER	1
8	502GB109	抬压挡板	MOVING PLATE	1
9	502GB107	抬压挡板座	PICK-UP FOOT INSTALLING BASE	1
10	502GB106	送料板座	PICK-UP INSTALLING BASE	1
11	502GZ102	压脚导板轴	INSTALLING SHAFT	1
12	502GK106	开口挡圈	E-RING	2
13	502GB111	压脚连接座	PICK-UP FOOT INSTALLING BASE	1
14	502GB118	压脚导向座	BUTTON CLAMP SLIDE	1
15	502GS113	压脚调节扳手定位螺钉	HINGE SCREW	1
16	502GB116	右压脚座	SMALL CLAMP JAW LEVER ASM.L	1
17	502GB117	纽扣右定位板	SPRING,RIGHT	1
18	502GM104	右压脚	PLATE K,R	1
19	502GS114	纽扣定位板螺钉	SCREW	1
20	502GS115	压脚螺钉	SCREW	1
21	502GS112	压脚导向螺钉	HINGE SCREW	1
22	502GS116	压脚座螺钉	HINGE SCREW	2
23	502GK110	抬压挡板座螺钉垫片	WASHER	2
24	502GB114	左压脚座	SMALL CLAMP JAW LEVER,L	1
25	502GM103	左压脚	PLATE K,L	1
26	502GS114	纽扣定位板螺钉	SCREW	1
27	502GB115	纽扣左定位板	SPRING,LEFT	1
28	502GS115	压脚螺钉	SCREW	1
29	502GW105	压脚座复位簧	BUTTON CLAMP JAW LEVER SPRING	1
30	502GB108	压脚导向块座	SUPPORT PLATE	1
31	502GK108	压脚导向块	SLIDE BLOCK	1
32	502GB110	抬压挡板座压板	PRESSER PLATE	1
33	502GZ103	压脚导向轴	STATIONING BLOCK SHAFT	1
34	502GB112	压脚调节扳手	SNAP FASTENER CLAMP STOP LEVER	1
35	502GS117	压脚调节扳手紧定螺钉	CLAMP SCREW	1
36	502GL103	压脚导向螺钉螺母	NUT	1
37	502GS118	压脚座导向柱	BUTTON CLAMP STOP PIN	2
38	502GK107	压脚导向块挡圈	SNAP RING, FOR CONNECTING ROD	1
39	502GL102	压脚导向块轴螺母	NUT	1
40	502GS109	压脚导向块座螺钉	SCREW	2
41	502GS111	抬压挡板座螺钉	SCREW	2
42	502GB113	手指保护器	FINGER GUARD	1
43	502GS110	抬压挡板螺钉	SCREW	2
44	502GK109	抬压挡板螺钉垫片	WASHER	2
45	502GB119	压脚导杆导板	ACCEPT PLATE,UPPER	1
46	502GW105	压脚导杆弹簧	PREWWURE SPRING	1
47	502GL104	压脚导杆螺母	THREAD TENSION NUT	2
48	502GO102	压脚导杆套	SLEEVE	1
49	502GS119	压脚导杆	ADJUSTING SHAFT	1
50	GS336-8	压脚导杆导板螺钉	SCREW	2
51	502GS107	送料牙螺钉	SCREW	1