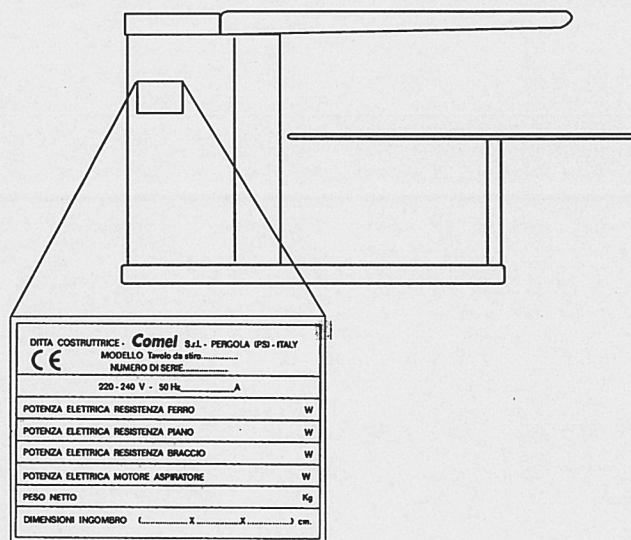


## HOW TO IDENTIFY THE UNIT



SERIAL NUMBER.....

IN0009

Data, descriptions and drawings in this manual are not binding.  
The company reserves the right to make any change if necessary.

CO.M.E.L. SRL

COSTR. ELETTROMECCANICHE MACCHINE DA STIRO

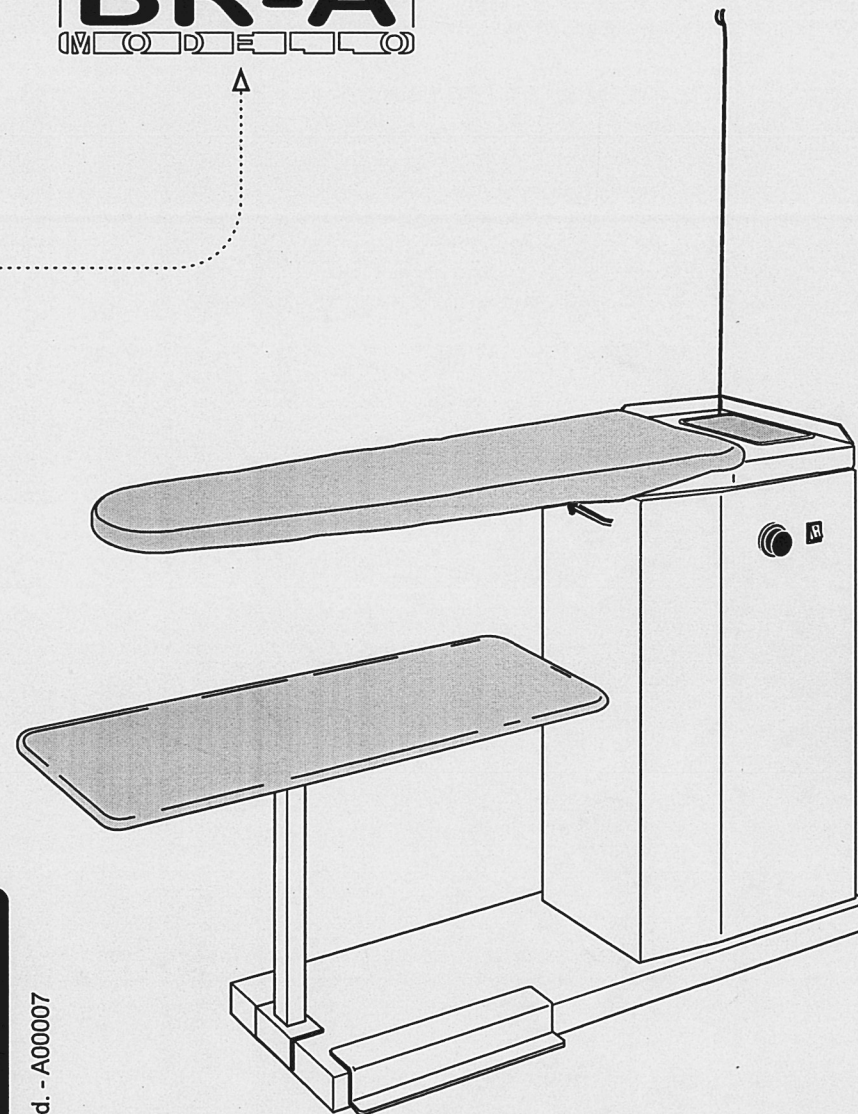
61045 PERGOLA (PS) - ITALIA  
VIA DELL' INDUSTRIA, 40  
ZONA INDUSTRIALE SUD

TEL. 0721/735110 - 735111  
FAX 0721/735114  
P.O. Box 62 P.IVA 0045639 041 8

## INSTRUCTION MANUAL

USE  
AND  
SERVICE

**BR-A**



cod. - A00007

**Comel**

Please read carefully

# INSTRUCTION MANUAL

## A T T E N T I O N

Please read carefully the overall instruction manual before carrying out any operation on the unit, in order to protect the operator and avoid any damages.

SIGNS ON THE UNIT



**ATTENTION-HEAT SOURCE-THERE MAY BE HIGH TEMPERATURE**



**STOP TENSION BEFORE CARRYING OUT ANY OPERATION ON THE UNIT**



**EARTH**

WARNING SIGNS



**DO NOT REMOVE ANY SAFETY DEVICE**



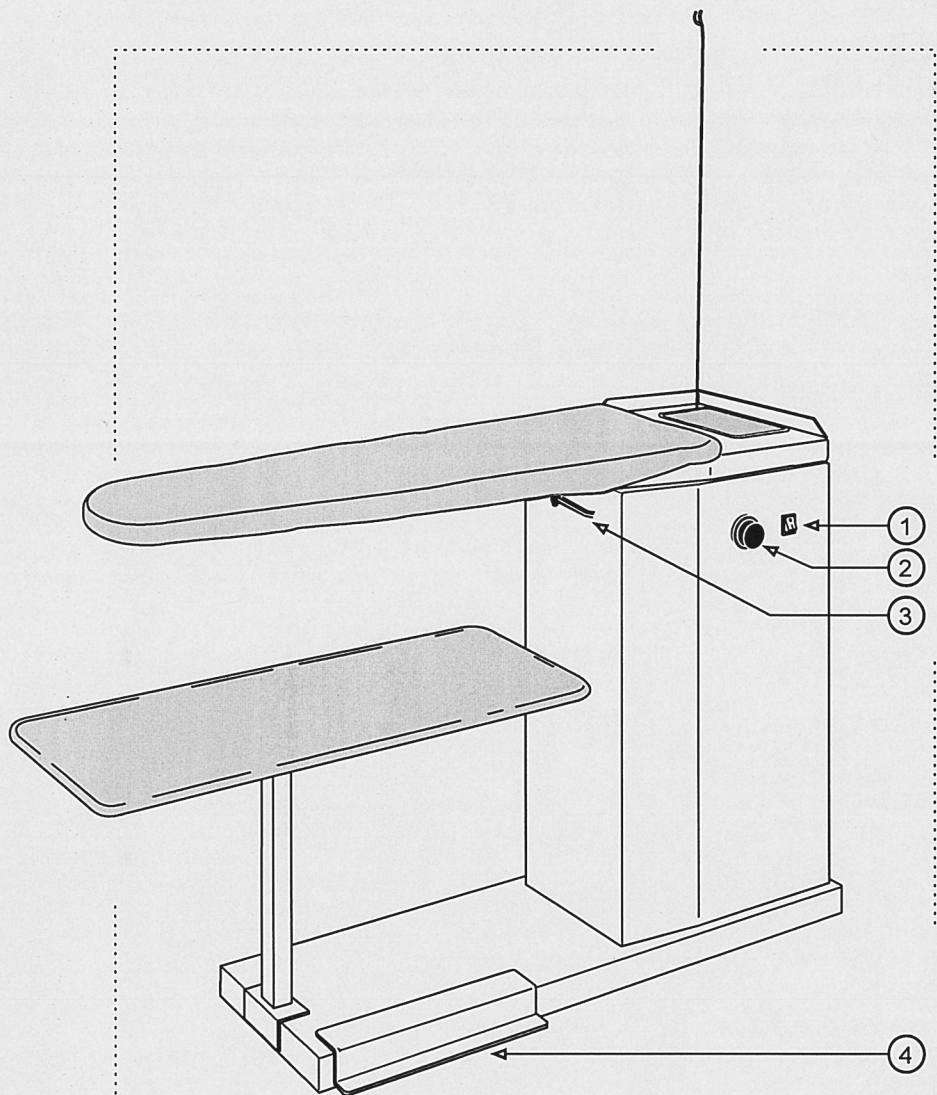
**DO NOT CARRY OUT ANY OPERATION ON THE UNIT WHEN IT IS ON**

# SAFETY WARNINGS:

- \* The unit is electrically safe under the condition that it is duly earthed, as provided for by the current regulations for electrical safety.  
The manufacturer can not be held responsible for any damage from the electrical mains not being duly earthed. If in doubt, please contact a qualified technician.
- \* The manufacturer can not be held responsible for any possible damage arising from the unit being used inadequately or irreasonably and/or serviced by unqualified staff.
- \* Please do not touch the unit with wet hands or wet feet.
- \* Please do not leave the unit plugged in. If it is unattended, this may turn dangerous.
- \* Before servicing or cleaning the unit in any way, please make sure that the unit is disconnected from the mains: the plug has to be off the socket.
- \* Should the unit fail or work poorly, please disconnect it and do not break it open. If service is needed, please contact only service centres authorized by the manufacturer and ask for original parts to be used. Whether the above warnings are disregarded, the safety of the unit may be undermined.
- \* Please disconnect the plug when the unit is not used. You are kindly recommended not to leave it plugged in if not necessary.

This unit complies with EEC directives 89/392





## REFERENCES

- 1\_\_BOARD SWITCH
- 2\_\_BOARD THERMOSTAT
- 3\_\_SUCTION ADJUSTMENT
- 4\_\_SUCTION PEDAL

## HOW TO OPERATE THE UNIT:

### HOW TO CONNECT THE UNIT:

- 1) The electrical cable of the unit has to be connected single-phased. A wall switch with a 10Amp safety fuse is required.
- Please let the suctioned air out through a 125 mm exhausting pipe.

### HOW TO SWITCH ON THE UNIT:

- a) Please turn on the main safety switch.
- b) Please turn on the switch (1), which powers the unit and the board.
- c) Please adjust the board temperature through the board thermostat (2).
- d) Please use the pedal (4) to suction; the lever (3) serves to adjust the suction power.

### HOW TO SWITCH OFF THE UNIT:

- a) A few minutes before your daily work is over, please turn the board switch (1) off.
- b) Please turn the main safety switch off.

## Troubles of the IRONING BOARD

The board is cold or overheated	- The thermostat is not duly set or works poorly.	- Replace the thermostat, or set it to 90°C
The board suction has failed or is reduced.	- The felt must be clogged.	- Replace the felt.
The suction unit has failed	- The suctioning motor must have burnt out. - The motor condenser must have burnt out. - The pedal microswitch must have broken down. - The electric cable must have broken off.	- Replace the suctioning motor. - Replace the motor condenser. - Replace the the pedal microswitch. - Replace the electrical cable.

N.B. SHOULD THE UNIT FAIL OR WORK POORLY, PLEASE DISCONNECT IT. DO NOT BREAK IT OPEN.

IF SERVICE IS NEEDED, PLEASE CONTACT ONLY SERVICE CENTRES AUTHORIZED BY THE MANUFACTURER AND ASK FOR ORIGINAL PARTS TO BE USED. WHETHER THE ABOVE WARNINGS ARE DISREGARDED, THE SAFETY OF THE UNIT MAY BE UNDERMINED.

PLEASE DISCONNECT THE UNIT FROM THE MAINS AND PLUG IT OFF, BEFORE SERVICING OR CLEANING THE UNIT.





MANUFACTURER'S  
**SPARE PARTS**

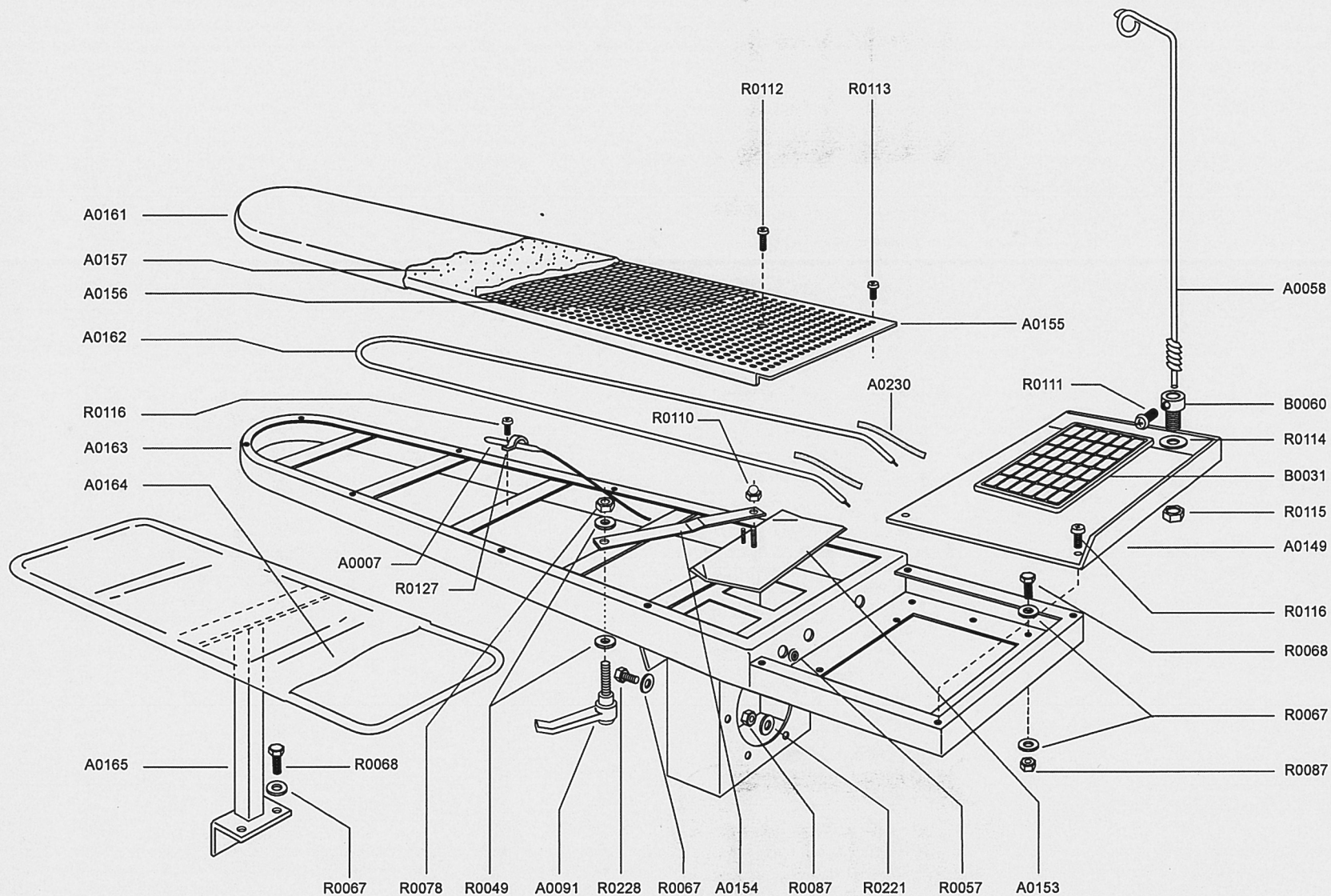
If service is needed, please contact service centres authorized

by the manufacturer and ask for original spare parts to be used.

Whether this warning is disregarded, the safety of the unit

may be undermined.





REF.	DESCRIPTION	Q*
A0007	BOARD THERMOSTAT	1
A0058	FLEX STAND	1
A0091	LEVER	1
A0149	IRON RESTING BRACKET	1
A0153	FLAP	1
A0154	FLAP ROD	1
A0155	PUNCHED PLATE	1
A0156	BOARD NET	1
A0157	FELT	1
A0161	COVER	1
A0162	BOARD HEATING ELEMENT	1
A0163	BOARD FRAMEWORK	1
A0164	UNDERCOVER	1
A0165	TRAY FRAMEWORK	1
A0230	SHEATH	2
B0031	IRON MAT	1
B0060	FLEX STAND SUPPORT	1
R0049	WASHER	2
R0057	RUBBER EYELET	1
R0067	WASHER	13
R0068	SCREW	7
R0078	NUT	1
R0087	NUT	10
R0110	CAP NUT	1
R0111	SCREW	1
R0114	SCREW	1
R0112	SCREW	5
R0113	SCREW	11
R0114	WASHER	1
R0115	NUT	1
R0116	SCREW	6
R0127	PROBE-TIGHTENING DEVICE	1
R0221	WASHER	6
R0228	SCREW	2

\*PIECES PER UNIT (IN THIS VIEW)

N.B. The above view is intended as a pure indication. It serves to show all the component parts of the unit to make any service easier.

**Cornel** R I C A M B I

UNIT UPPER PART  
(BOARD)

(STANDARD VERSION)  
BR/A-FR/F

24/03/2003

ITAV-0724

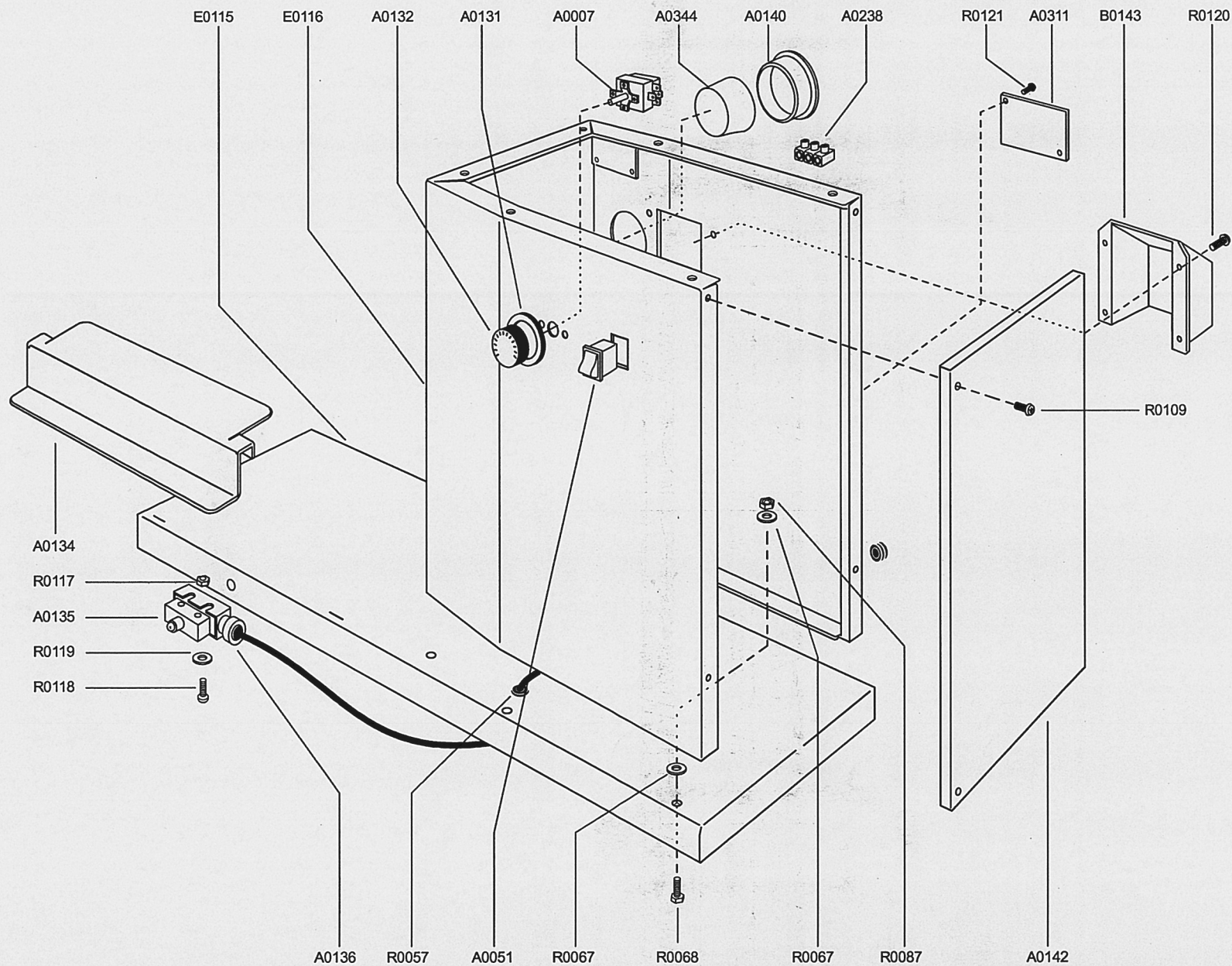
DESCRIPTION

TYPE

LAST CHANGE DATE

VIEW REF.





REF.	DESCRIPTION	Q*
A0007	BOARD THERMOSTAT	1
A0051	SWITCH	1
A0131	THERMOSTAT RING	1
A0132	THERMOSTAT KNOB	1
A0134	PEDAL	1
A0135	MICROSWITCH	1
A0136	MICROSWITCH CASE	1
A0140	ARM LID	1
A0142	PANEL	1
A0238	ELECTRICAL TERMINAL	1
A0311	IDENTIFICATION TAG	1
A0344	CORK CAP	1
B0143	SUCTION PROTECTION	1
E0115	UNIT BASE	1
E0116	UNIT FRAMEWORK	1
R0057	RUBBER EYELET	2
R0067	WASHER	12
R0068	SCREW	6
R0087	NUT	6
R0109	SCREW	4
R0117	NUT	2
R0118	SCREW	2
R0119	WASHER	2
R0120	SCREW	4
R0121	SCREW	2

\*PIECES PER UNIT (IN THIS VIEW)

N.B. The above view is a pure indication. It serves to show all the component parts of the unit to make any service easier.

**Cornel** R I C A M B I

UNIT LOWER PART  
(BASE AND FRAMEWORK)

BR/A  
(STANDARD VERSION)

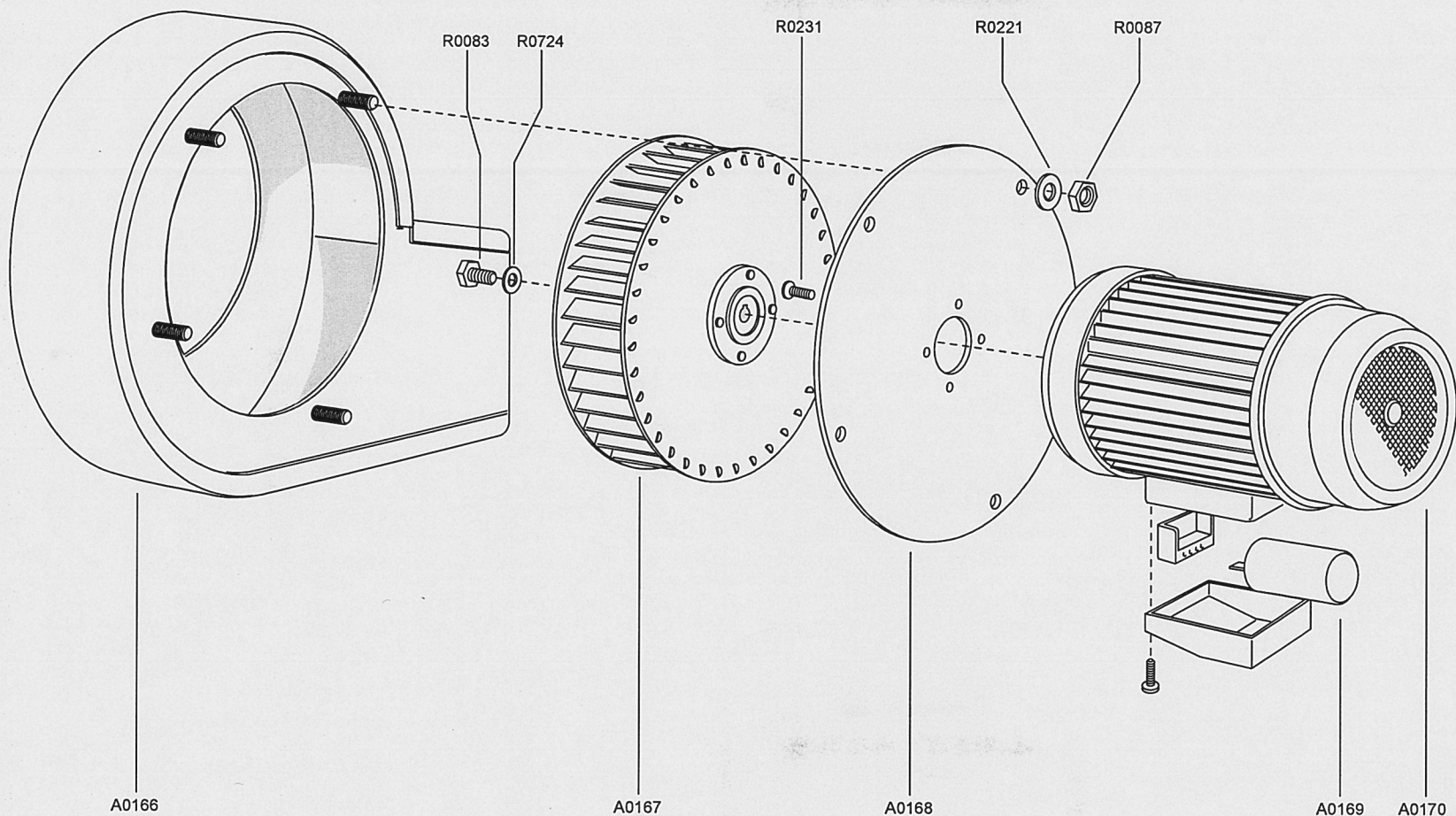
19/05/1999 ITAV-0031

DESCRIPTION

UNIT

LAST CHANGE DATE

VIEW REF.



REF.	DESCRIPTION	Q**
A0166	CASE	1
A0167	FAN	1
A0168	MOTOR FLANGE	1
A0169*	CONDENSER	1
A0170	SUCTIONING MOTOR	1
R0083	SCREW	1
R0087	NUT	4
R0221	WASHER	4
R0231	SCREW	4
R0724	WASHER	1

\*NB: PLEASE GIVE THE THECNICAL DATA PUNCHED ON THE MOTOR WHEN ORDERING THE PART REF.A0169

\*\*PIECES PER UNIT (IN THIS VIEW)

N.B. The above view is a pure indication. It serves to show all the component parts of the unit to make any service easier.

**Cornel RICAMBI**

INDUSTRIAL SUCTION MOTOR AND  
CASE (STANDARD VERSION)

BR/A - FR/F - FR/F/PV  
(STANDARD)

21/05/2010 ITAV-0005A

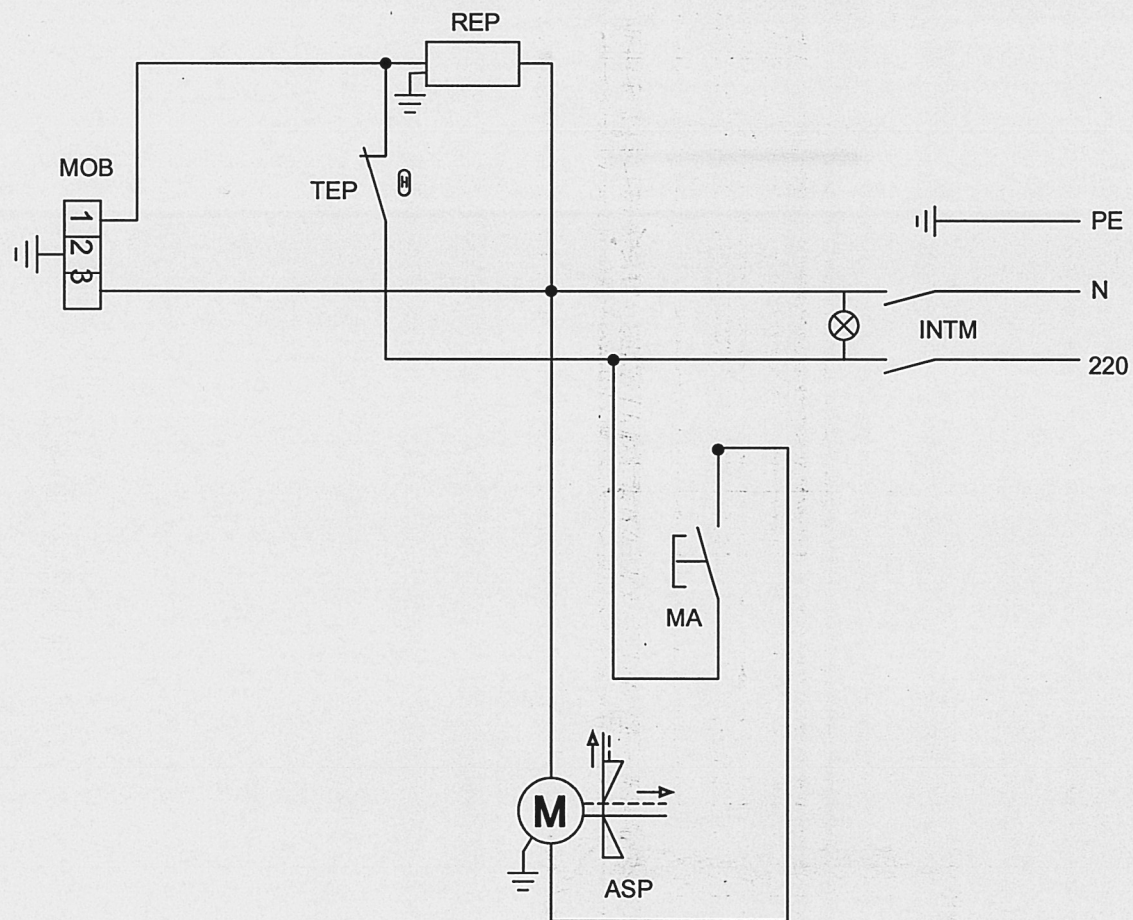
DESCRIPTION

TYPE

LAST CHANGE DATE

VIEW REF.





# REF. DESCRIPTION

INTM	MAIN SWITCH
REP	BOARD HEATING ELEMENTT
MOB	SLEEVE ARM THERMINAL BOARD
MA	MICROSWITCH
ASP	SUCTION UNIT
TEP	BOARD THERMOSTAT
PE	EARTH
N	NEUTRAL

**Comel**ELETTTRICO

WIRING DIAGRAM

BR/A  
(STANDARD VERSION)

19/05/1999

ISE-0007

DESCRIPTION

TYPE

LAST CHANGE DATE

VIEW REF.