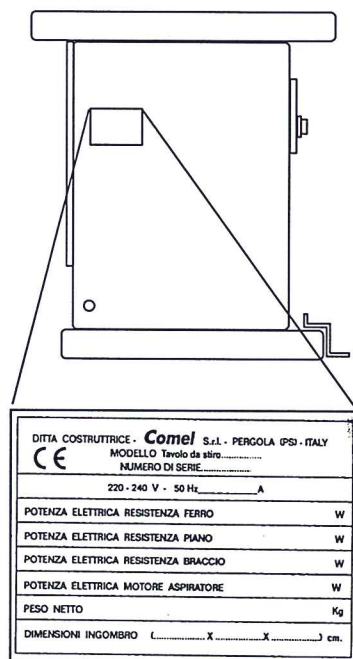


How to identify the unit



Serial number.....

IN0001

Data, descriptions and drawings in this manual are not binding.
The company reserves the right to make any changes if necessary.

CO.M.E.L. SRL

COSTR. ELETTROMECCANICHE MACCHINE DA STIRO

61045 PERGOLA (PS) - ITALIA
VIA DELL' INDUSTRIA, 40
ZONA INDUSTRIALE SUD

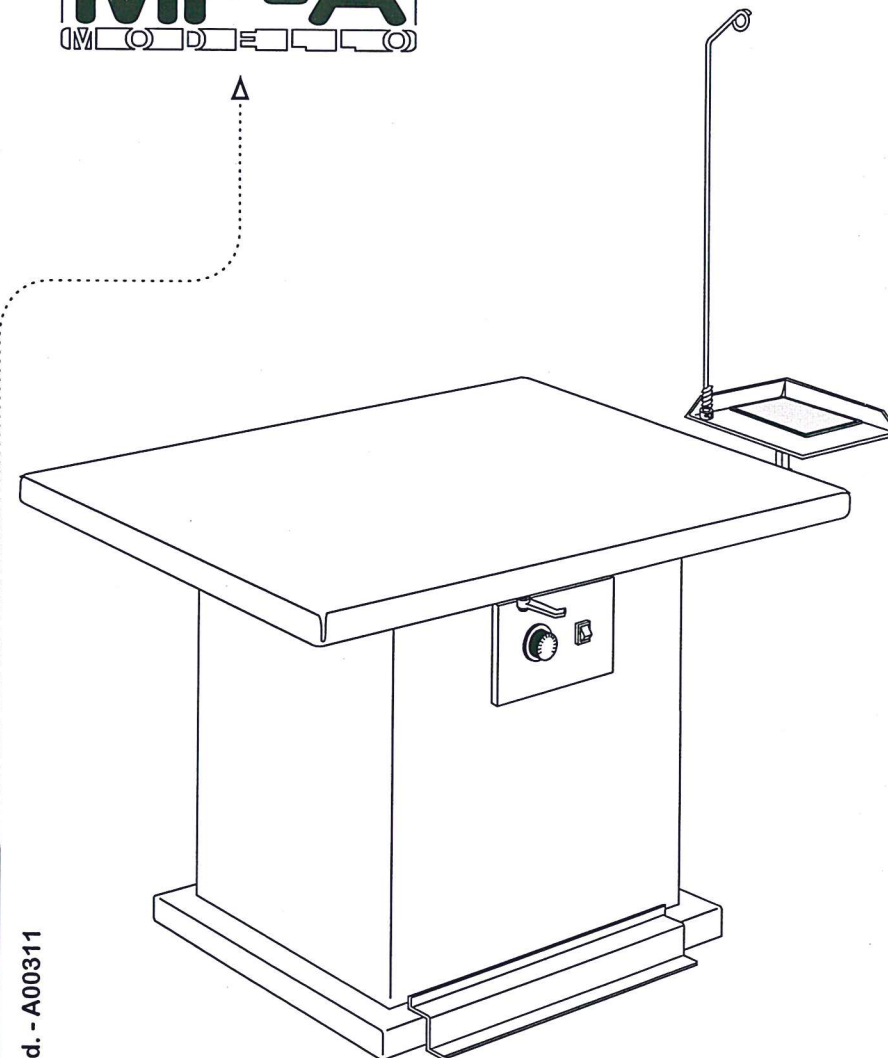
TEL. 0721/735110 - 735111
FAX 0721/735114
P.O. Box 62 P.IVA 0045639 041 8

Service and use instruction manual

Comel

cod. - A00311

MP-A



Please read carefully


INSTRUCTION MANUAL

A T T E N T I O N

Please read carefully the overall instruction manual before carrying out any operation on the unit, in order to protect the operator and avoid any damage.


SIGNS ON THE UNIT

ATTENZIONE
TEMPERATURE
PERICOLOSE




ATTENTION
DANGEROUS
TEMPERATURES

**- ATTENTION - HEAT SOURCE - THERE MAY BE
HIGH TEMPERATURE**



220/380
(...)

- STOP TENSION BEFORE DOING ANY OPERATION ON THE UNIT




- THE EARTH

WARNING SIGNS



- DO NOT REMOVE ANY SAFETY DEVICE



- DO NOT CARRY OUT ANY OPERATION ON THE UNIT WHEN IT IS ON

SAFETY WARNINGS

This unit is electrically safe under the condition that it is duly earthed, as provided for by the current regulations for electrical safety.

The manufacturer can not be held responsible for any damage from the electrical mains not being duly earthed. If in doubt, please call in a qualified technician.

The manufacturer can not be held responsible for any possible damage arising from the unit being used inadequately or irreasonably and/or serviced by unqualified staff. Please do not touch the unit with wet hands or wet feet.

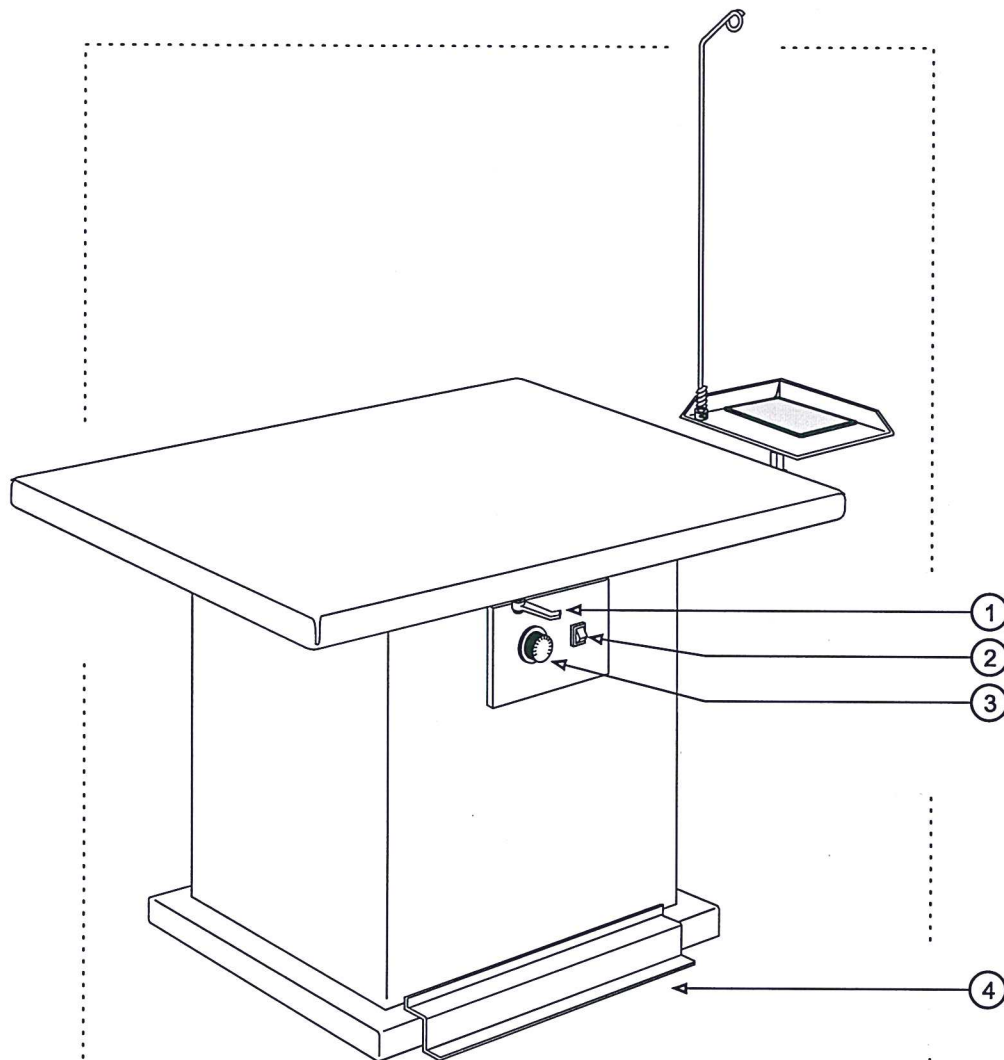
Please do not leave the unit plugged in. If it is unattended, this may turn dangerous.

Before servicing or cleaning the unit in any way, please make sure that the unit is disconnected from the mains: the plug has to be off the socket.

Should the unit fail or work badly, please disconnect it and do not break it open. If service is needed, please contact service centres authorized by the manufacturer and ask for original parts to be used. Whether the above warnings are disregarded, the safety of the unit is undermined.

Please disconnect the plug when the unit is not used. You are kindly recommended not to leave it plugged in if not necessary.

This unit complies with EEC directives 89/592



REFERENCES

- 1__Board suction adjustment
- 2__Main switch
- 3__Knob of the board thermostat
- 4__Suction pedal

INSTRUCTIONS TO OPERATE THE UNIT

HOW TO CONNECT THE UNIT

The electrical cable of the unit has to be connected single-phased. A wall switch with a 16Amp safety fuse is required.

Please let the suctioned air out through a 125mm exhausting pipe.

HOW TO SWITCH THE UNIT ON:

- A) Turn on the main safety switch.
- B) Turn on the switch (2) which powers the unit and gets the board heated.
- C) Adjust the board temperature through the thermostat knob (3).
- D) Use the foot pedal (4) to suction; the lever (1) serves to adjust the suctioning power. (If the unit is fitted with a sleeve arm, diverting all the suctioning power from the board to the arm helps improving the performance of the arm)

HOW TO SWITCH THE UNIT OFF:

- A) Turn off the switches of the unit and make sure that all the lights are off.
- B) Turn off the main safety switch.

TROUBLES OF THE IRONING BOARD:

FAULTS:	CAUSES:	SUGGESTIONS:
The board is cold or overheated	The thermostat must not be duly set or must work poorly	Replace the thermostat or set it to 90° C
The board suction has failed or is reduced	The felt must be clogged	Replace the felt
The suction unit has failed	The suctioning motor must have burn out The motor condenser must have failed The electrical cable must have broken off	Replace the suction motor Replace the motor condenser Replace the electrical cable

NB: Should the unit fail or work poorly, please disconnect it.

Do not break it open. If service is needed, please contact service centres authorized by the manufacturer and ask for original parts being used. Whether the above warnings are disregarded, the safety of the unit is compromised.

Please disconnect the unit from the mains and plug it off before servicing or cleaning the unit or doing any operation on it.

MANUFACTURER'S SPARE PARTS

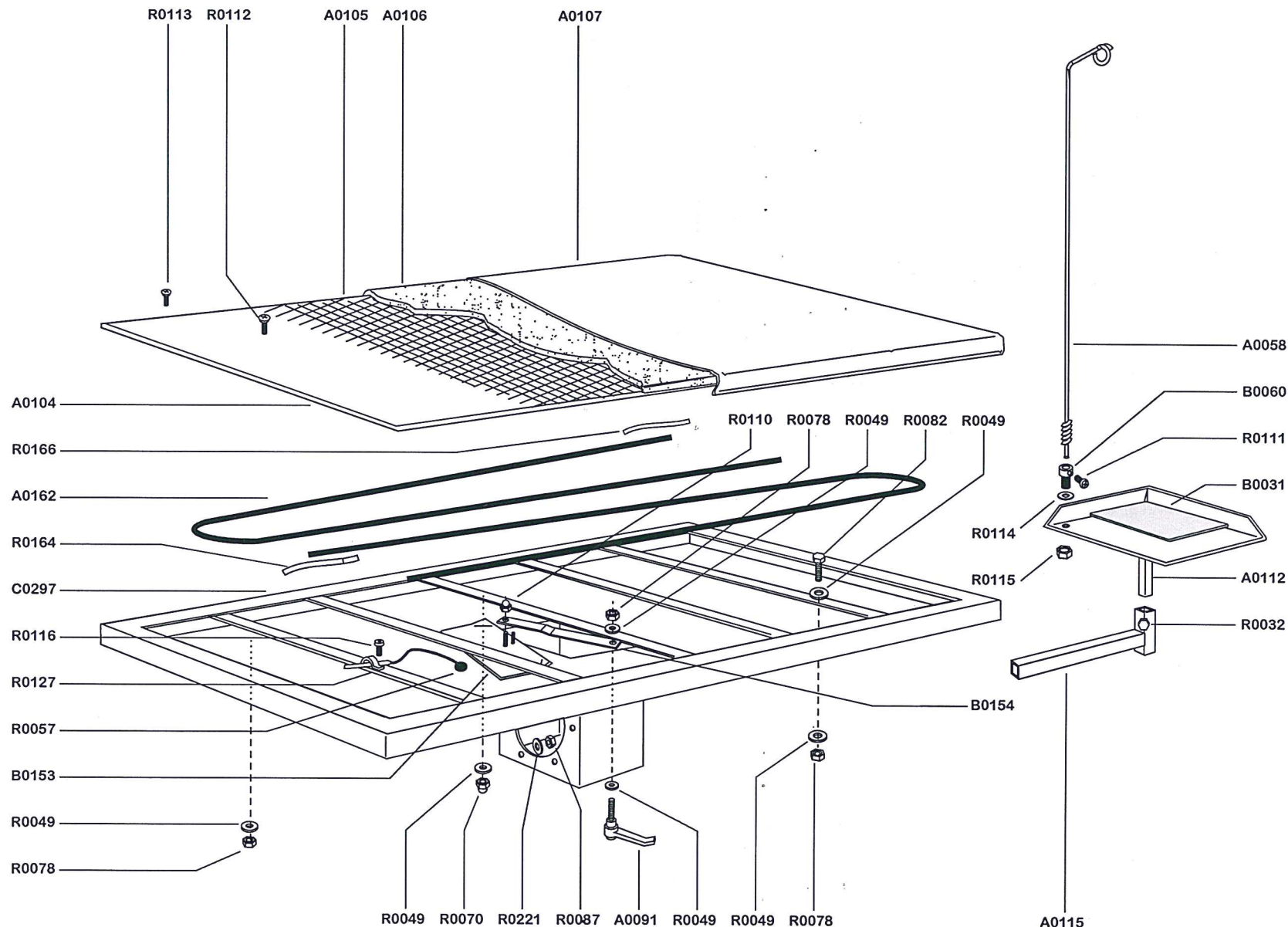
If service is needed, please contact service centres authorized

by the manufacturer and ask for original spare parts to be used.

Whether this warning is disregarded, the safety of the unit

may be undermined.





Ref.	Description	Q.*
A0058	Flex stand	1
A0091	Lever	1
A0104	Punched plate	1
A0105	Board net	1
A0106	Felt	1
A0107	Cover	1
A0112	Bracket	1
A0115	Support	1
A0162	Heating element	1
B0031	Iron mat	1
B0060	Flex stand support	1
B0153	Flap	1
B0154	Flap rod	1
C0297	Board framework	1
R0032	Screw	2
R0049	Washer	8
R0057	Rubber eyelet	1
R0070	Nut	1
R0078	Nut	6
R0082	Screw	4
R0111	Nut	6
R0110	Nut	1
R0111	Screw	1
R0112	Screw	15
R0113	Screw	24
R0114	Washer	1
R0115	Nut	1
R0116	Screw	1
R0127	Probe-tightening device	1
R0164	Sheath	1
R0166	Sheath	4
R0221	Washer	6

*PIECES PER UNIT (IN THIS VIEW)

The above view is intended as a pure indication. It serves to show all the component parts of the unit to make any service easier.

Cornel R I C A M B I

UNIT UPPER PART
(BOARD DETAILED VIEW)

MP/A and MP/F
(standard version)

19/05/1999

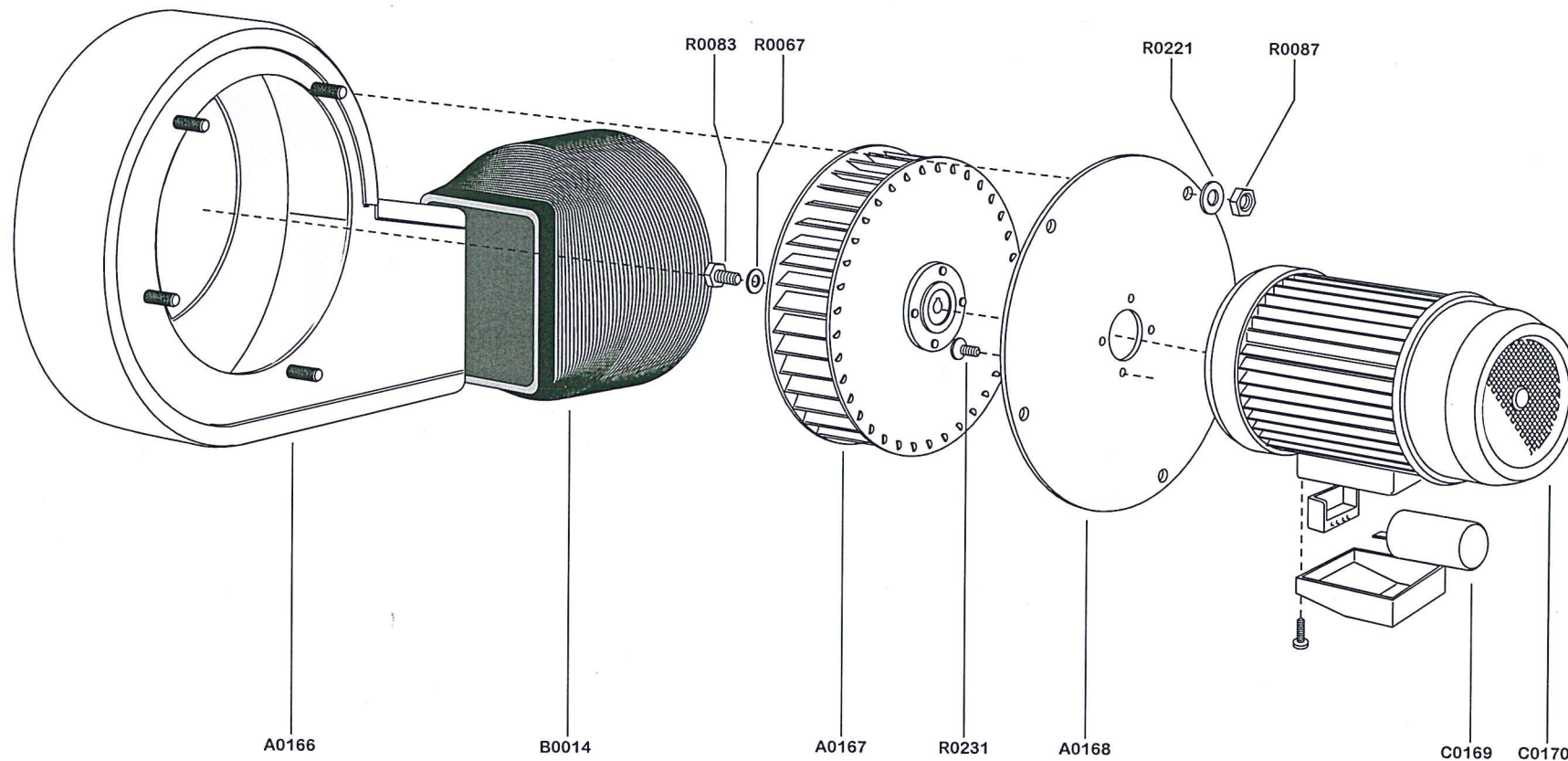
ITAV-0112

DESCRIPTION

TYPE

LAST CHANGE DATE

VIEW REF.



Ref.	Description	Q*
A0166	Shell	1
A0167	Fan	1
A0168	Motor flange	1
B0014	Exhausting pipe	1
C0169	Condenser	1
C0170	Suctioning motor	1
R0067	Washer	1
R0083	Screw	1
R0087	Nut	4
R0221	Washer	4
R0231	Screw	4

*NB: PLEASE GIVE THE THECNICAL DATA PUNCHED ON THE MOTOR WHEN ORDERING THE PART REF.C0169

*PIECES PER UNIT (IN THIS VIEW)

The above view is intended as apure indication. It serves to show all the component parts of the unit to make any service easier.

CornelR I C A M B I

INDUSTRIAL SUCTION UNIT
(HP 0,8 SINGLE-PHASED)

MP

13/01/2011

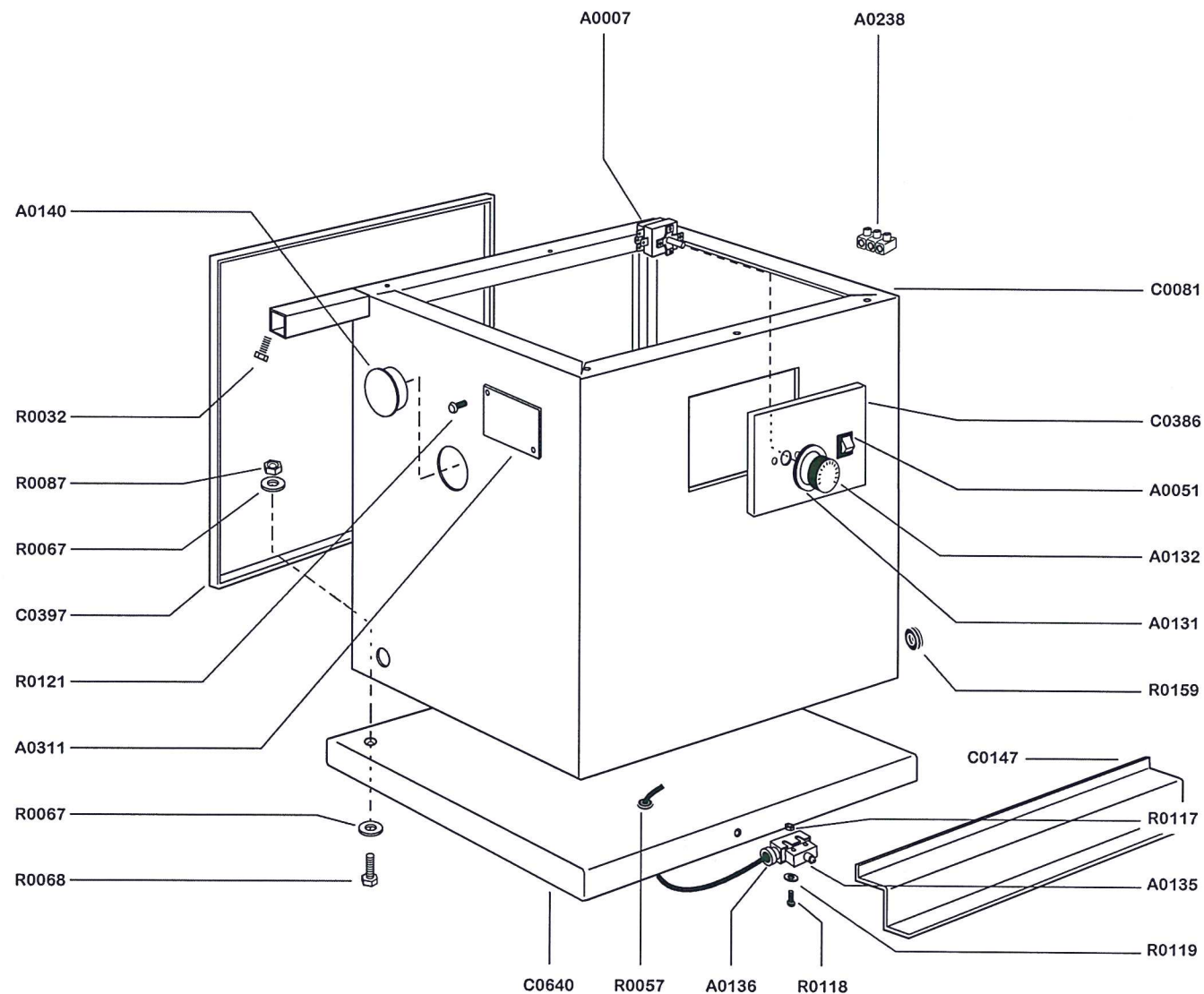
ITAV-0239A

DESCRIPTION

TYPE

LAST CHANGE DATE

VIEW REF.



Ref.	Description	Q*
A0007	Thermostat	1
A0051	Switch	1
A0131	Thermostat ring	1
A0132	Thermostat knob	1
A0135	Micro-switch	1
A0136	Micro switch case	1
A0140	Arm lid	1
A0238	Electrical terminal	1
A0311	Identification tag	1
C0081	Framework	1
C0147	Pedal	1
C0386	Control panel	1
C0397	Panel	1
C0640	Base	1
R0032	Screw	2
R0057	Rubber eyelet	2
R0067	Washer	14
R0068	Screw	7
R0087	Nut	7
R0117	Nut	4
R0118	Screw	4
R0119	Washer	4
R0121	Screw	2
R0159	Rubber eyelet	1

*PIECES PER UNIT (IN THIS VIEW)

The above drawing is intended as a pure indication. It serves to show all the parts of the unit to make any service easier.

Cornel R I C A M B I

UNIT LOWER PART
(BASE AND FRAMEWORK)

MP-A
(STANDARD VERSION)

19/05/1999

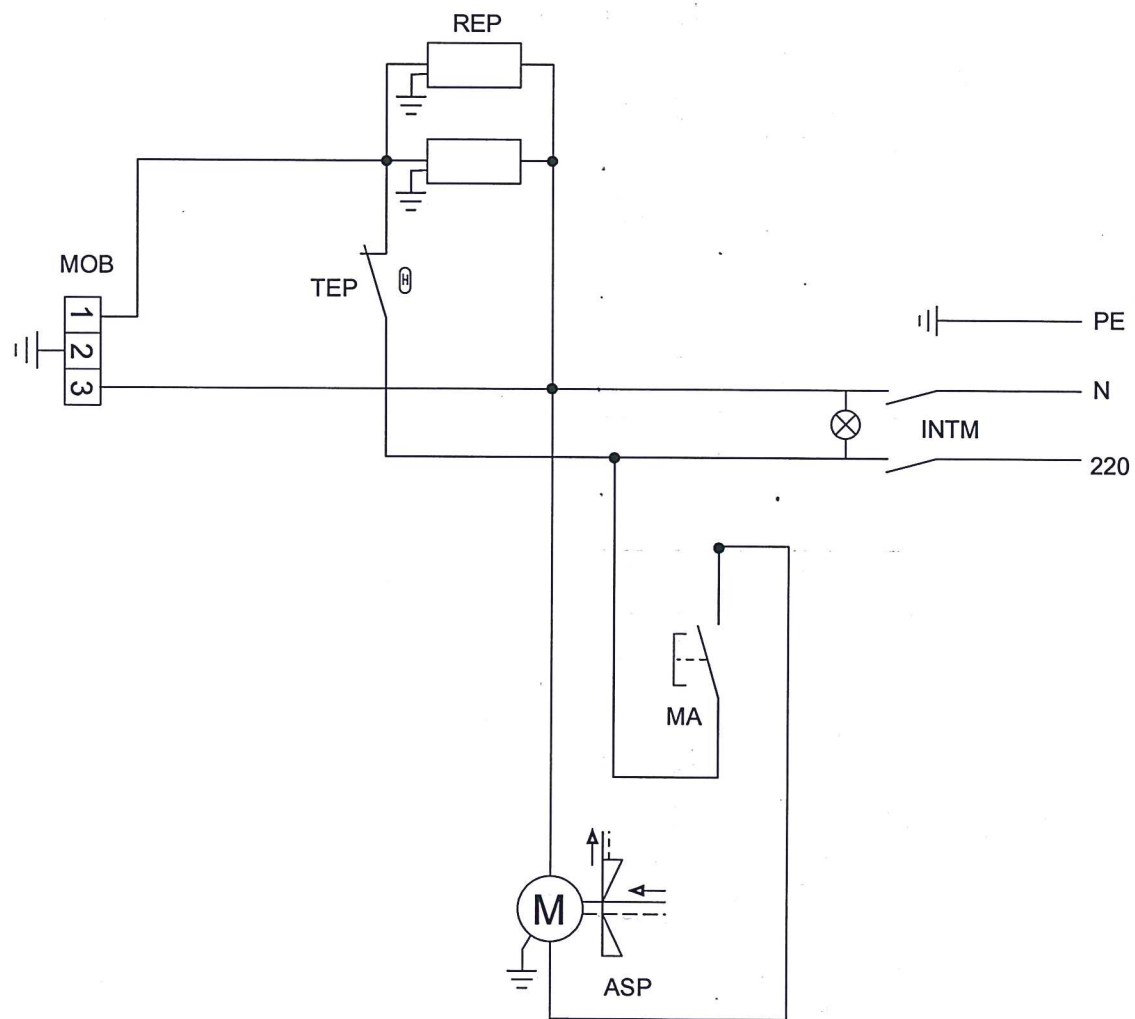
ITAV-0158

DESCRIPTION

TYPE

LAST CHANGE DATE

VIEW REF.



REF. DESCRIPTION

INTM	Main switch
REP	Board heating elements
MOB	Sleeve arm terminal board
MA	Micro-switch
ASP	Suction unit
TEP	Board thermostat
PE	Earth
N	Neutral

CornelELETTTRICO

WIRING DIAGRAM

MP/A
(STANDARD VERSION)

19/05/1999

ISE-0044

DESCRIPTION

TYPE

LAST CHANGE DATE

VIEW REF.