

LSW two needle series (angular stitch)

High speed, Large vertical axis hook, Compound feed and walking foot, Reverse stitch and split needle bar, Lockstitch machine



Variety

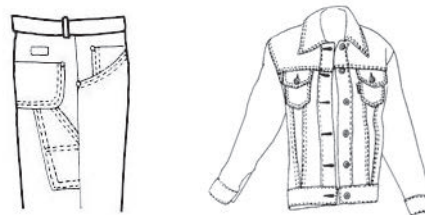
LSW-28BLK



Angular stitching and/or straight stitching can be made by simplified operation

Applications

- For sewing medium to heavy materials such as leather, coats, jackets and jeans which require decorative or functional angular stitching.



LSW two needle series (angular stitch)

Features

- Semi-automatic lubrication system.
- Large vertical axis hook (2.0 times).
- Automatic hook lubrication.
- Safety clutch prevents the hook from being damaged.
- Reverse stitching.
- Easy to operation of disengageable right and left needle bars by use of finger touch lever.

Specifications

Variety	LSW-28BLK	
Number of needle	Two needle	
Max. sewing speed	2,400 s.p.m.	
Max. stitch length	1/4" (6.5 mm)	
Clearance under presser foot	by knee	33/64" (13 mm)
	by hand	21/64" (8.5 mm)
Needle bar stroke	1-9/32" (32.6 mm)	
Needle(standard)	DPx17 (#22) , 135x17 (#140)	
Thread	#8 (standard)	
Hook	Large vertical axis hook (2.0 times)	
Amount of lift of walking foot	1/8"-15/64" standard 5/32" (3 - 6 mm) (standard 4 mm)	
Thread take up lever	Slide type	
Lubrication	Semi-automatic lubrication type	
Bed size	20-25/64"x 7" (518 x 177 mm)	
Working space	10-5/32"x 4-21/64" (258 x 110 mm)	
Motor	Clutch motor	
Net weight(Head only)	35Kg	

NOTE: (1) Speed depends on threads, materials and type of operation
(2) Specifications subject to change without notice

Needle gauge list

Variety	Needle gauge size	
LSW-28BLK	3/16"(4.8 mm), 1/4"(6.4 mm), 5/16"(7.9mm), 3/8"(9.5mm)	standard : 1/4"(6.4 mm)

Note: Other needle gauges are available within 1/8" to 1" at extra cost.



SEIKO SEWING MACHINE CO., LTD.

2-13-6, Sakaecho, Funabashi-shi
Chiba Prefecture, 273-0018, Japan

Phone : +81-47-420-3561 (Overseas dept.)

Fax : +81-47-420-3560

E-mail : export@seiko-sewing.co.jp

Printed in Japan 2015.08

<http://www.seiko-sewing.co.jp/>