

# MERROW®

SEWING MACHINE COMPANY

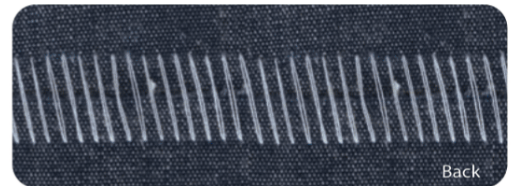
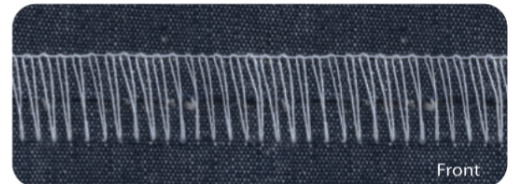
A SOLUTION FOR:

## CONTINUOUS PROCESSING



### MERROW 70-D3B-2 SPECIFICATIONS

OPERATING SPEED:	2250 rpm
STANDARD STITCH ECCENTRIC :	6 spi
STITCH ECCENTRIC RANGE :	4-12 spi
STANDARD NEEDLE :	8SDT
NEEDLE RANGE:	3SDT - 8SDT
STITCH TYPE	501
STITCH WIDTH :	5/8" (16mm)
NUMBER OF THREADS	1



BUTTED  
SEAM



WOVENS

## 70-D3B-2 | BUTTED SEAM MACHINE

The Industry Standard Sewing Machine for End-to-End Seaming of Piece Goods

- Table or Railway Mountable
- Single Thread Machine with Cutters
- Ideal for Seaming Dry Wovens
- Sews a Wide Variety of Materials

Hobkirk Sewing Machines Ltd  
118-130 Darwen Street | Blackburn  
Lancashire | BB2 2AJ | United Kingdom

01254 693555 | [www.hobkirk.co.uk](http://www.hobkirk.co.uk) | [info@hobkirk.co.uk](mailto:info@hobkirk.co.uk)



# MERROW

CLASS

MODEL

OPTION

70 - D3B - 2

STYLE

## MERROW has the Widest Variety of Sewing Machines for End-to-End Seaming.

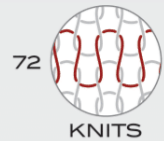
CLASS

STYLE

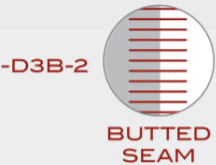
OPTION



70



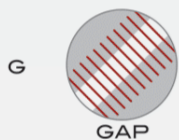
72



Machine produces a flat, one-thread butted seam (standard configuration).



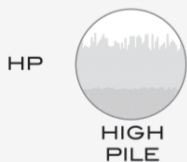
Machine is designed with a non-differential mechanism for increasing the stitch count, particularly at selvages.



Machine creates a gap between the joined ends of the fabric.



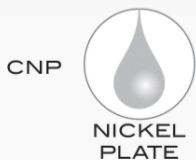
Machine creates a rolled seam at joined ends of fabric.



Machine is engineered for use on high pile fabric.



Two-thread locked stitch machine.



Machine is chemically nickel plated for use in wet and harsh environments; extreme corrosion resistance.



Machine is designed to be mounted on a railway sewing system.



Hobkirk Sewing Machines Ltd

118-130 Darwen Street | Blackburn | BB2 2AJ | United Kingdom

01254 693555 | [www.hobkirk.co.uk](http://www.hobkirk.co.uk) | [info@hobkirk.co.uk](mailto:info@hobkirk.co.uk)

- Denotes Styles/Options that are INCLUDED on this Model
- Denotes Styles/Options that are AVAILABLE for each Machine Class