



自动高速平缝机 ZJ8800A-D3 ZJ8800系列

AUTOMATIC HIGH-SPEED LOCKSTITCH SEWING MACHINE

零件手册

PARTS BOOK

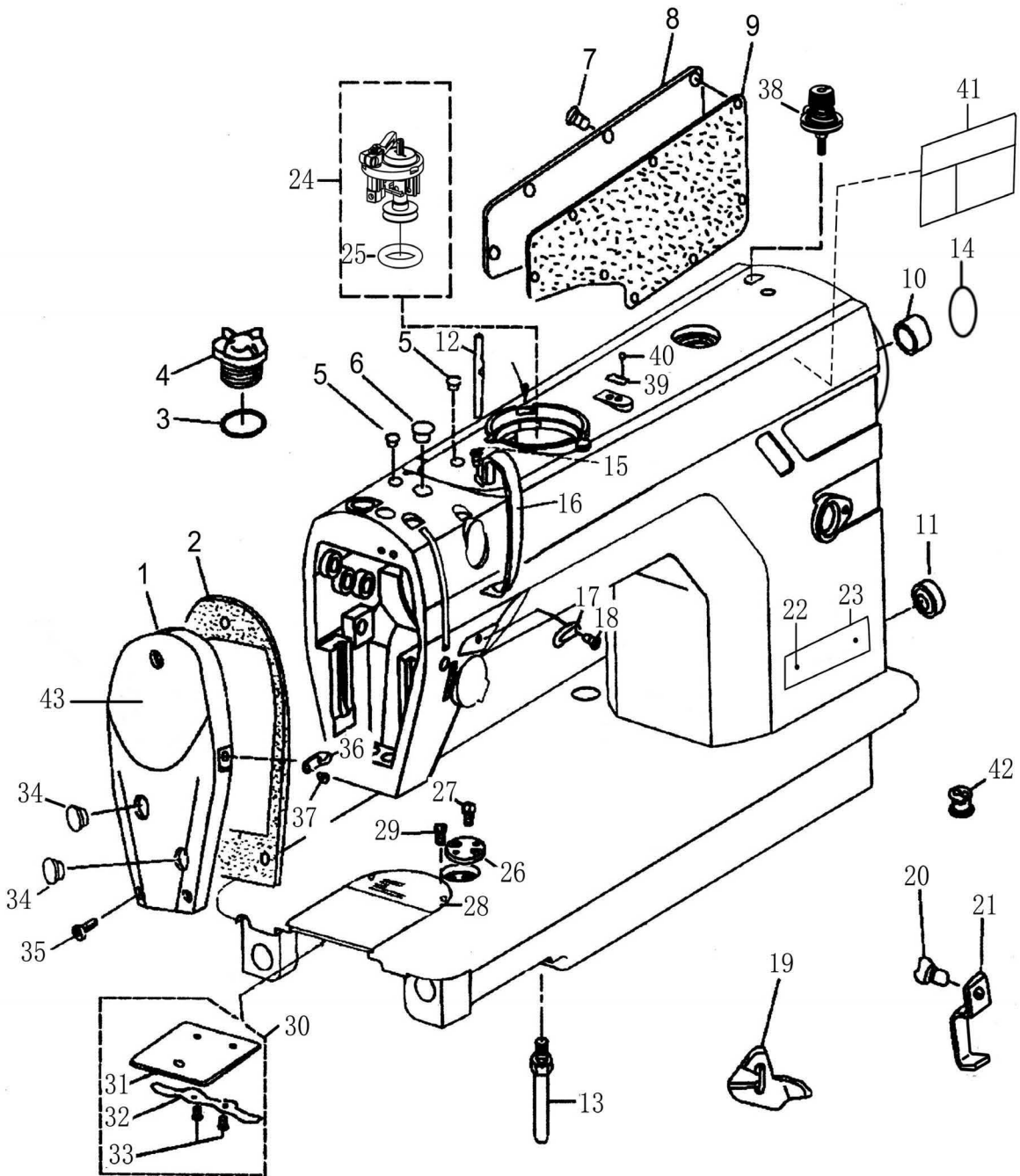
中国·中捷缝纫机股份有限公司
ZOJE SEWING MACHINE CO., LTD.

目录

CONTENTS

1. 机壳分组件 Machine frame&miscellaneous cover components	36
2. 上轴、挑线分组件 Main shaft&thread take-up components	39
3. 针杆、夹线分组件 Needle bar&thread tension components	41
4. 压料、松线分组件 Presser bar&tension release components	43
5. 勾线分组件 Hook of driving shaft components	46
6. 送料分组件 Feed mechanism components.....	48
7. 送料、调节分组件 Feed regulating components	51
8.1 剪线分组件(旋刀组件) Thread trimmer components (Round knife components)	54
8.2 剪线分组件(平刀组件) Thread trimmer components (Straight knife components)	57
9. 拨线分组件 Wiper components	60
10. 润滑分组件 Lubrication components	62
11. 油盘、膝抬压脚分组件 Presser foot components of oil plate knee Lift	64
12. 过线架分组件 Components of thread-running stand	66
13. 附件 Accessories	68

1. 机壳分组件 MACHINE MACHINE FRAME & MISCELLANEOUS COVER COMPONENTS



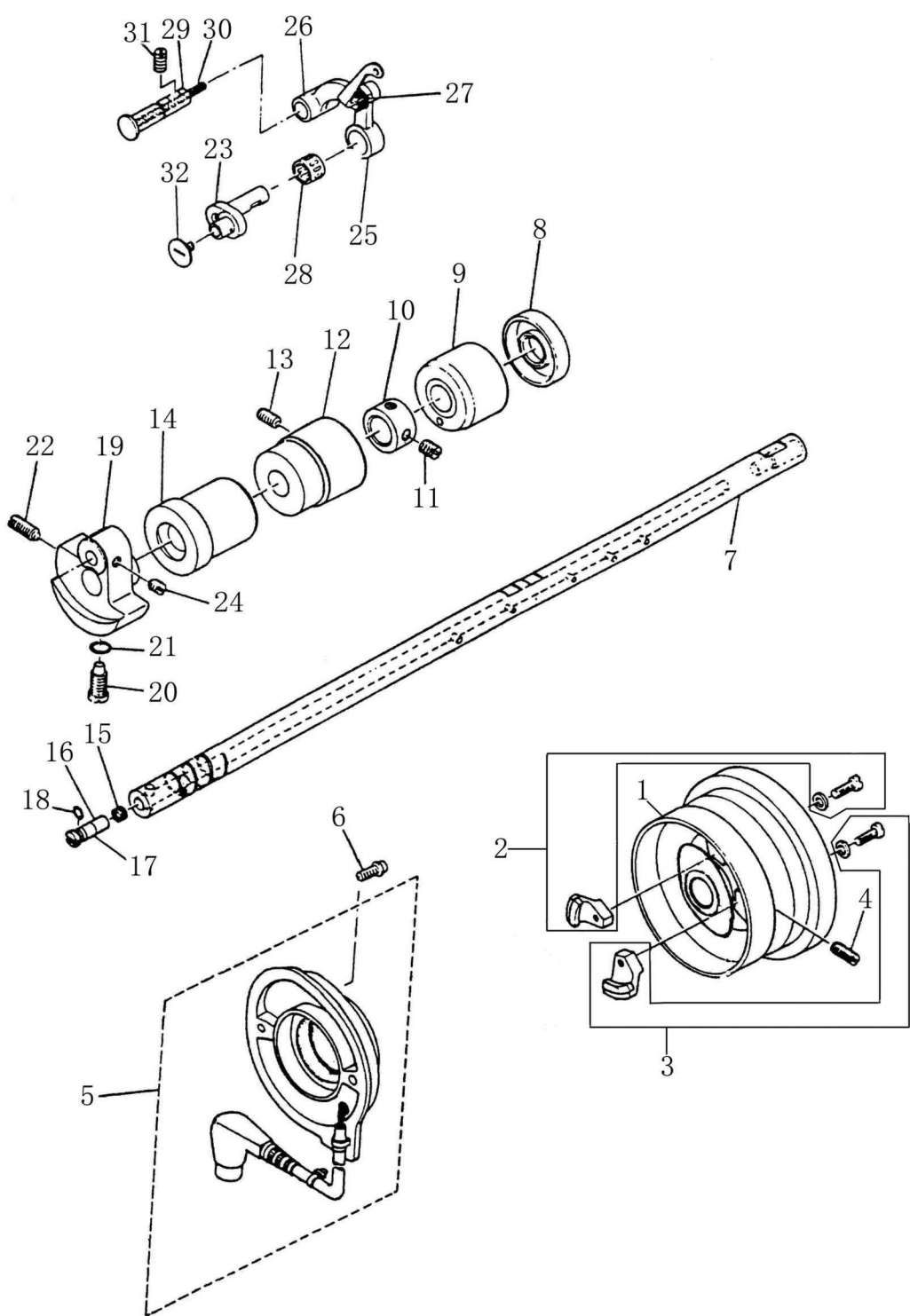
1. 机壳分组件 MACHINE FACHINE FRAME & MISCELLANEOUS COVER COMPONENTS

序号 Ref. No.	物料号 Part. No.	名称	Description	数量 Amt.
1	20003700	面板	FACE PLATE	1
2	10010896	面板垫	FACE PLATE GASKET	1
3	10008939	O形圈	O-RING	1
4	10012438	油窗	OIL WINDOW	1
5	10008943	橡胶塞	RUBBER PLUG	2
6	10008942	橡胶塞	RUBBER PLUG	1
7	10008972	螺钉	SCREW	8
8	20003525	后窗板	SIDE PLATE	1
9	10008976	后窗板垫	SIDE PLATE GASKET	1
10	10008975	送料调节器孔塞	RUBBER PLUG	1
11	10008941	下轴盲孔塞	RUBBER PLUG	1
12	10005639	过线柱	NEEDLE THREAD GUIDE PIN	1
13	10002577	底板支柱	BED SCREW STUD	4
14	10008974	接地指示牌	EARTHING INDICATION PLAT	1
15	10008934	挑线杆防护罩螺钉	SCREW	1
16	10014082	挑线杆防护罩	THREAD TAKE-UP LEVER COVER	1
17	10008940	右线钩	ARM THEAD GUIDE-RIGNT	1
18	10008973	右线钩螺钉	SCREW	1
19	10012471	电线压板	CORD HOLDER	1
20	10008972	电线螺钉	SCREW	1
21	10012464	电线夹	CORD HOLDER	1
22	10002840	型号牌铆钉	POLE	2
24	10013967	绕线器组件	BOBBIN WIND ASM.	1
25	10004500	O形圈	O-RING	1
26	10004373	限位挡片	RULER PLATE	1
27	10004374	限位挡片螺钉	SCREW	2
29	10009005	针板螺钉	SCREW	2
30	10013706	推板部件	BED SLIDE ASM	1
31	10003960	推板	SLIDE PLATE	1
32	10003963	推板簧	SPRING OF SLIDE PLATE	1
33	10010080	推板螺钉	SCREW	2
34	10008977	面板调节螺孔塞	RUBBER PLUG	2
35	10008972	面板螺钉	SCREW	3
36	10008937	左线钩	ARM THEAD GUIDE-LEFT	1
37	10008973	左线钩螺钉	SCREW	1
38	10010949	绕线夹线器	BOBBIN THREAD TENSION ASM.	1
39	10011149	绕线切刀	THREAD CUTTER	1
40	10010197	绕线切刀固定螺钉	SCREW	1
41	10008936	安全指示牌	SAFETY-INDICATING PLATE	1
42	10012439	电线过线套	NEEDLE BEARING	1
43	10005468	面板装饰牌	REFLECTOR PLATE	1

1. 机壳分组件 MACHINE FACHINE FRAME & MISCELLANEOUS COVER COMPONENTS

序号 Ref.No.	物料号 Part.No.	名称	Description	数量 Amt.
标准型 Typical model				
23	10005932	型号牌	NUMBER PLATE	1
28	10012470	针板	NEEDLE PLATE	1
小旋梭厚料 Heavy weight material (small rotating hook)				
23	10006741	型号牌	NUMBER PLATE	1
28	10014459	针板	NEEDLE PLATE	1

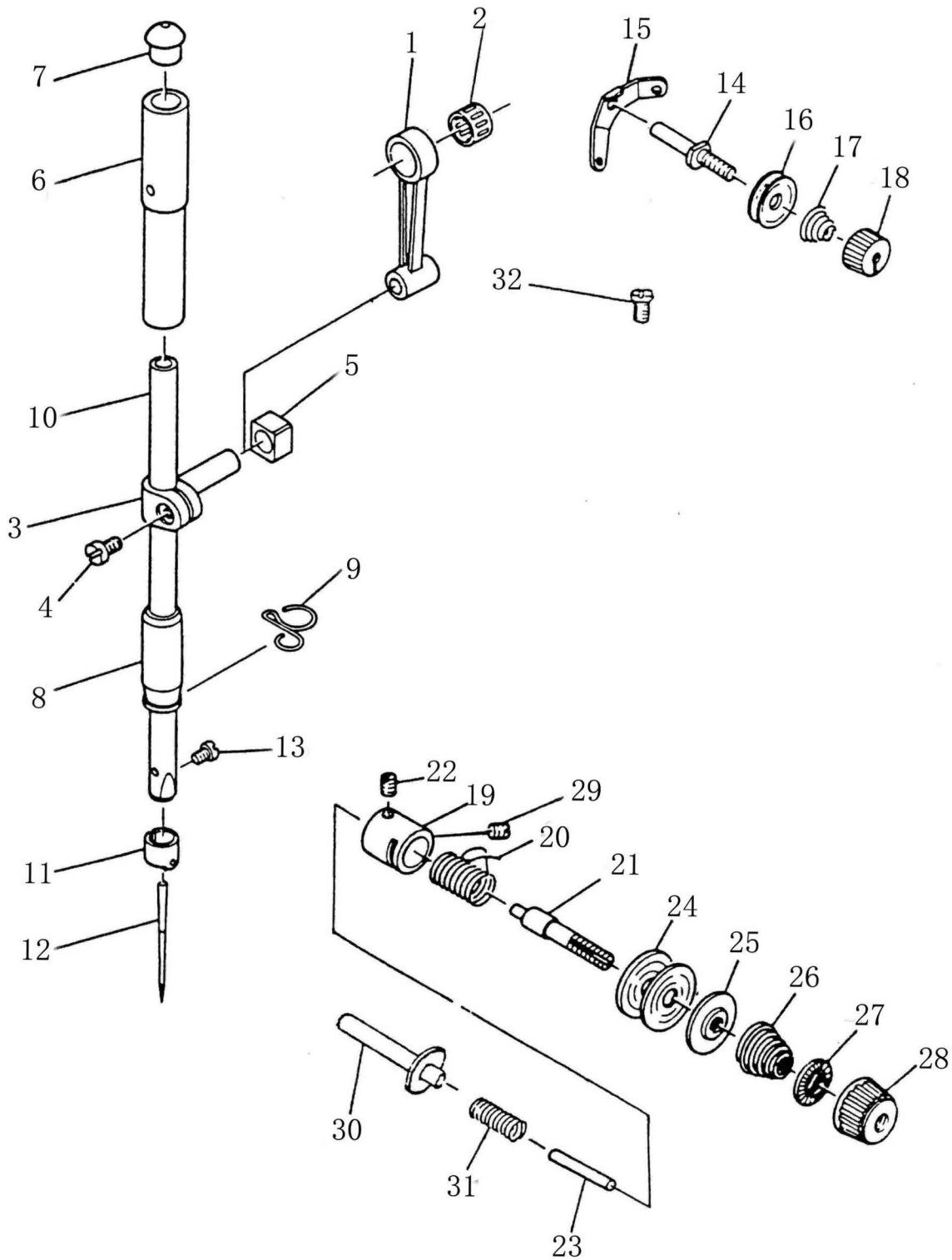
2. 上轴、挑线分组件 Main shaft & thread take-up components



2. 上轴、挑线分组件 Main shaft & thread take-up components

序号 Ref. No.	物料号 Part. No.	名称	Description	数量 Amt.
1	20003811	上 轮	Hand wheel	1
2	10005650	磁 钢	Magnet	2
3	10005648	磁钢支承架	Magnet support	2
4	10010536	上轮螺钉	Screw 15/64"×28 L=15	2
5	10005652	上轴传感器部件	Dynamo stator	1
6	10014482	上轴传感器安装螺钉	Screw	2
7	10010544	上 轴	Main shaft	1
8	10010507	上轴油封	Oil seal	1
9	10014499	上轴后轴套	Main shaft bushing, rear asm.	1
10	10010542	上轴挡圈	Thrust collar asm.	1
11	10005020	上轴挡圈螺钉	Screw 1/4"×40 L=6	2
12	10007239	上轴中轴套	Bushing, intermediate	1
13	10010593	上轴中轴套螺钉	Screw 15/64"×28 L=9	1
14	10007233	上轴前轴套	Main shaft bushing, front asm.	1
15	10010541	曲柄油量限制毡	Roller felt	1
16	10010504	曲柄油量调节销	Oil amount adjusting pin asm.	1
17	10010540	曲柄油量调节销套	Rubber pushing	1
18	10010538	曲柄油量调节销O形圈	Rubber ring	1
20	10010545	针杆曲柄定位螺钉	Screw	1
21	10010534	针杆曲柄定位螺钉O形圈	Rubber ring	1
22	10010082	针杆曲柄紧固螺钉	Screw 9/32"×28 L=16	1
24	10010065	挑线曲柄定位螺钉	Screw 1/4"×40 L=6	2
27	10010539	挑线杆防油套	Rubber	1
28	10014106	挑线杆滚针轴承	Needle bearing	1
29	10010543	挑线连杆销	Thread take-up crank shaft	1
30	10008067	挑线连杆销油线	Oiling wick	1
31	10010083	挑线连杆销螺钉	Screw 15/64"×28 L=10.5	1
32	10010537	挑线曲柄左旋螺钉	Screw(left) 9/64"×40 L=4.8	1
标准型 Typical model				
19	10012203	针杆曲柄	Counterweight	1
23	10006844	挑线曲柄	Needle bar crank asm.	1
25	10004158	挑线杆分部件	Thread take-up lever asm.	1
26	10010535	挑线连杆	Sitich-swaying staff	1
小旋梭厚料 Heavy weight material (small rotating hook)				
19	10012858	针杆曲柄	Counterweight	1
23	10005936	挑线连杆	Sitich-swaying staff	1
25	10005940	挑线曲柄	Needle bar crank asm.	1
26	10005939	挑线杆分部件	Thread take-up lever asm.	1

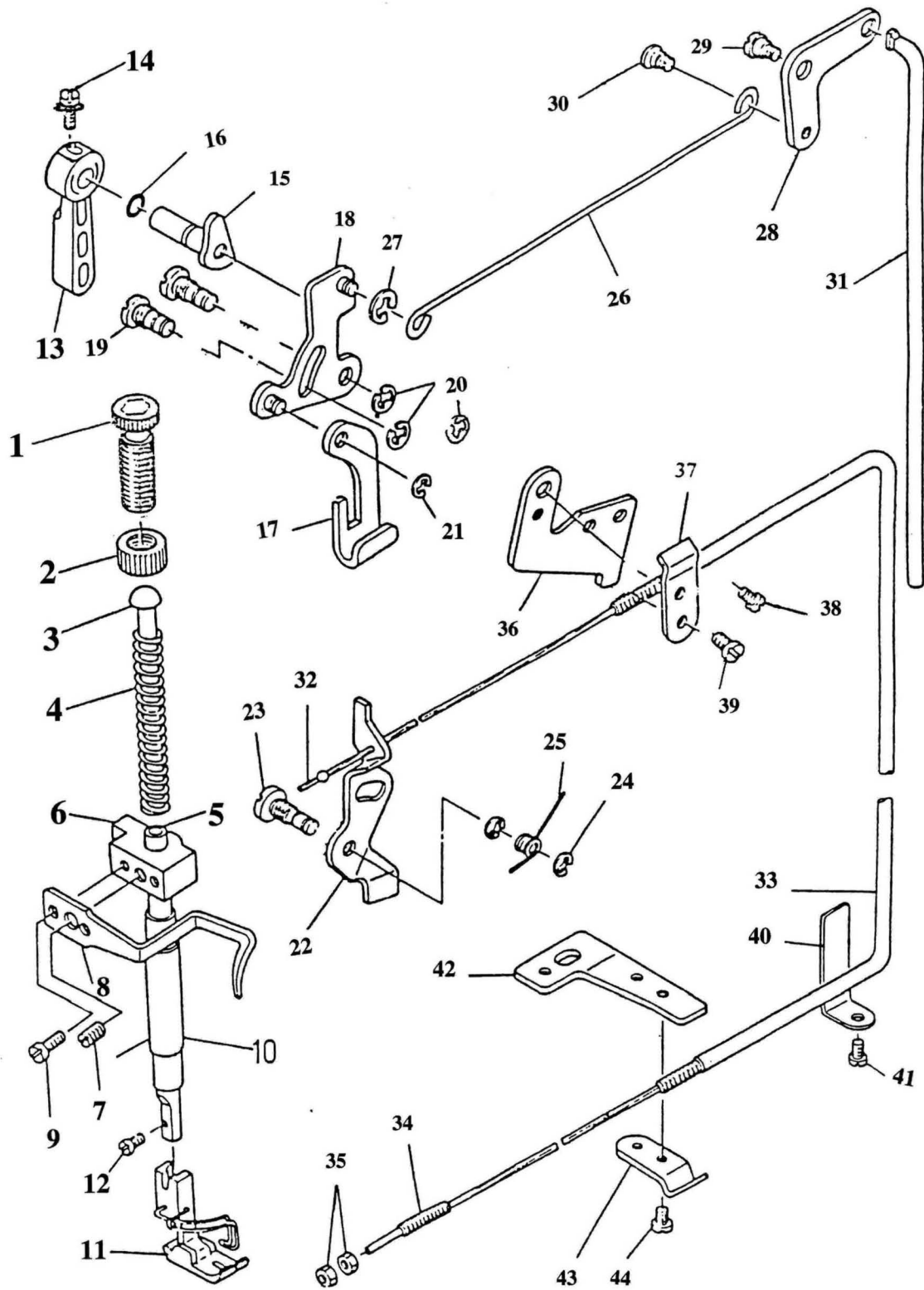
3. 针杆、夹线分组件 Needle bar & thread tension components



3. 针杆、夹线分组件 Needle bar & thread tension components

序号 Ref. No.	物料号 Part. No.	名称	Description	数量 Amt.
1	10010592	针杆连杆	Needle bar crank rod	1
2	10014106	针杆连杆滚针轴承	Needle bearing	1
3	10010590	针杆连接柱	Needle bar connection asm.	1
4	10010643	针杆连接柱螺钉	Screw 9/64"×40 L=6	1
5	10010586	针杆连接柱滑块	Slide block	1
6	10010589	针杆上轴套	Needle bar bushing, upper	1
7	10010587	针杆上轴套孔塞	Cap	1
13	10010588	机针螺钉	Screw 1/8"×44 L=4.5	1
14	10005841	上夹线螺钉	First tension post	1
15	10012589	上过线板	Thread tension guide	1
16	10005839	上夹线板	Bobbin winder tension disc	2
17	10005838	上夹线簧	Thread tension spring	1
18	10006003	上夹线螺母	Thread tension nut	1
19	10010639	挑线簧调节座	Tension post socket	1
20	10004201	挑线簧	Take-up spring	1
21	10004177	夹线螺钉	Screw	1
22	10004200	夹线螺钉紧固螺钉	Set screw 9/64"×40 L=5.5	1
23	10004184	松线钉	Thread release pin	1
24	10004180	夹线板	Tension disc	2
25	10004179	松线板	Tension disc holder	1
27	10004199	夹线制动板	Tension disc stopper	1
28	10004178	夹线螺母	Tension nut	1
29	10006264	夹线器螺钉	Screw 15/64"×28 L=7	1
30	10010641	松线辅钉	Tension release supporting pin	1
31	10010642	松线辅钉弹簧	Tension release pin spring	1
32	10008934	上夹线器螺钉	Screw 3/16"×28 L=6	1
标准型 Typical model				
8	10014117	针杆下轴套	Needle bar bushing, lower	1
9	10010638	针杆下轴套线钩	Needle bar thread guide	1
10	10004182	针杆	Needle bar asm.	1
11	10010591	针杆线钩	Needle bar thread guide	1
12	10004898	机针	Needle (DBX1#14)	1
26	10004176	夹线簧	Tension spring	1
小旋梭厚料 Heavy weight material (small rotating hook)				
8	10005916	针杆下轴套	Needle bar bushing, lower	1
9	10005943	针杆下轴套线钩	Needle bar thread guide	1
10	10014469	针杆	Needle bar asm.	1
11	10005945	针杆线钩	Needle bar thread guide	1
12	10004868	机针	Needle	1
26	10005941	夹线簧	Tension spring	1

4. 压料、松线分组件 Presser bar & tension release components



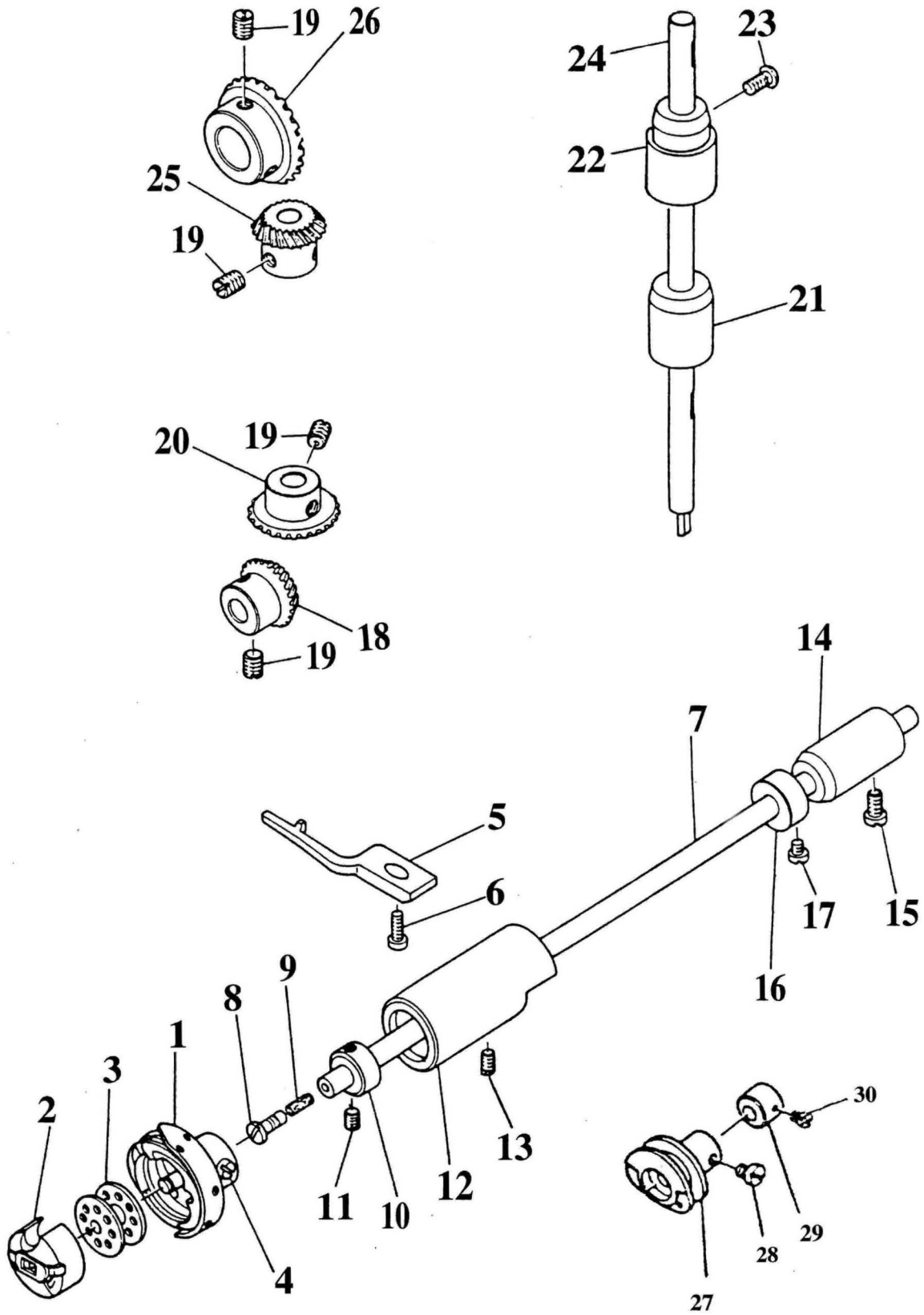
4. 压料、松线分组件 Presser bar & tension release components

序号 Ref. No.	物料号 Part. No.	名称	Description	数量 Amt.
1	10011022	调压螺钉	Presser spring regulator	1
2	10011023	调压螺母	Nut 1/2"×28	1
3	10004439	调压导杆	Presser guide bar	1
5	10010646	压 杆	Presser bar	1
6	10010024	压杆导架	Needle bar guide bracket	1
7	10003921	压杆导架螺钉	Screw 1/4"×40 L=8	1
8	10010021	缓线调节钩	Presser bar thread guide	1
9	10010018	缓线调节钩螺钉	Screw 9/64"×40 L=8.5	2
12	10010650	活压脚螺钉	Screw 9/64"×40 L=10.5	1
14	10010016	压脚扳手螺钉	Screw 9/64"×40 L=9.5	1
16	10010027	压脚扳手O形圈	Rubber ring	1
17	10010648	压脚升降板	Lifting lever	1
18	10008945	抬压脚前杠杆部件	Hand lifter link asm.	1
19	10010653	前杠杆螺纹销	Link shaft	2
20	10010026	螺纹销开口挡圈	Snap ring	3
21	10010026	升降板连接特制开口挡圈	Lifting lever ring	1
22	10010019	松线顶板	Tension release plate	1
23	10010022	松线顶板螺纹销	Tension release shaft	1
24	10010026	螺纹销开口挡圈	Snap ring	2
25	10010647	松线顶板复位簧	Tension release return spring	1
26	10010025	抬压脚拉杆	Lifting lever connecting rod	1
27	10010649	拉杆开口挡圈	Snap ring	1
28	10010017	抬压脚后杠杆	Lifting lever link	1
29	10010652	后杠杆轴位螺钉	Hinge screw	1
30	10010651	抬压脚拉杆螺钉	Hinge screw	1
31	10010020	抬压脚顶杆	Connecting rod vertical	1
32	10005702	钢 丝 绳	Wire cable	1
33	10005701	松线钢丝软管	Wire tube	1
34	10012362	松线钢丝调节螺钉	Set screw	1
35	10005697	松线钢丝调节螺母	Nut	2
36	10012448	软管支承板	Wire holder bracket (upper)	1
37	10012445	软管压板	Wire holder	1
38	10012446	软管支承板螺钉 SM3/16"X28 L=6	Screw 3/16"×28 L=6	1
39	10010074	软管压板螺钉	Screw 11/64"×40 L=7	1
40	10012447	软管下挡板	Wire holder bracket (lower)	1
41	10008934	软管下挡板螺钉	Screw	1
42	10012443	软管下支承板	Wire holder bracket (lower)	1
43	10012445	软管下支承板压板	Wire holder	1
44	10010074	软管下支承板压板螺钉	Screw 11/64"×40 L=5	1

4. 压料、松线分组件 Presser bar & tension release components

序号 Ref.No.	物料号 Part.No.	名称	Description	数量 Amt.
标准型 Typical model				
4	10004473	调压簧	Presser spring	1
10	10014118	压杆轴套	Presser bar bushing lower	1
11	10012449	活压脚部件	Presser foot asm.	1
13	10011064	压脚扳手	Hand lifter	1
15	10010023	压脚扳手凸轮部件	Hand lifter cam asm.	1
小旋梭厚料 Heavy weight material (small rotating hook)				
4	10012994	调压簧	Presser spring	1
10	10005915	压杆轴套	Presser bar bushing lower	1
11	10006112	活压脚部件	Presser foot asm.	1
13	10003922	压脚扳手	Hand lifter	1
15	10005981	压脚扳手凸轮部件	Hand lifter cam asm.	1

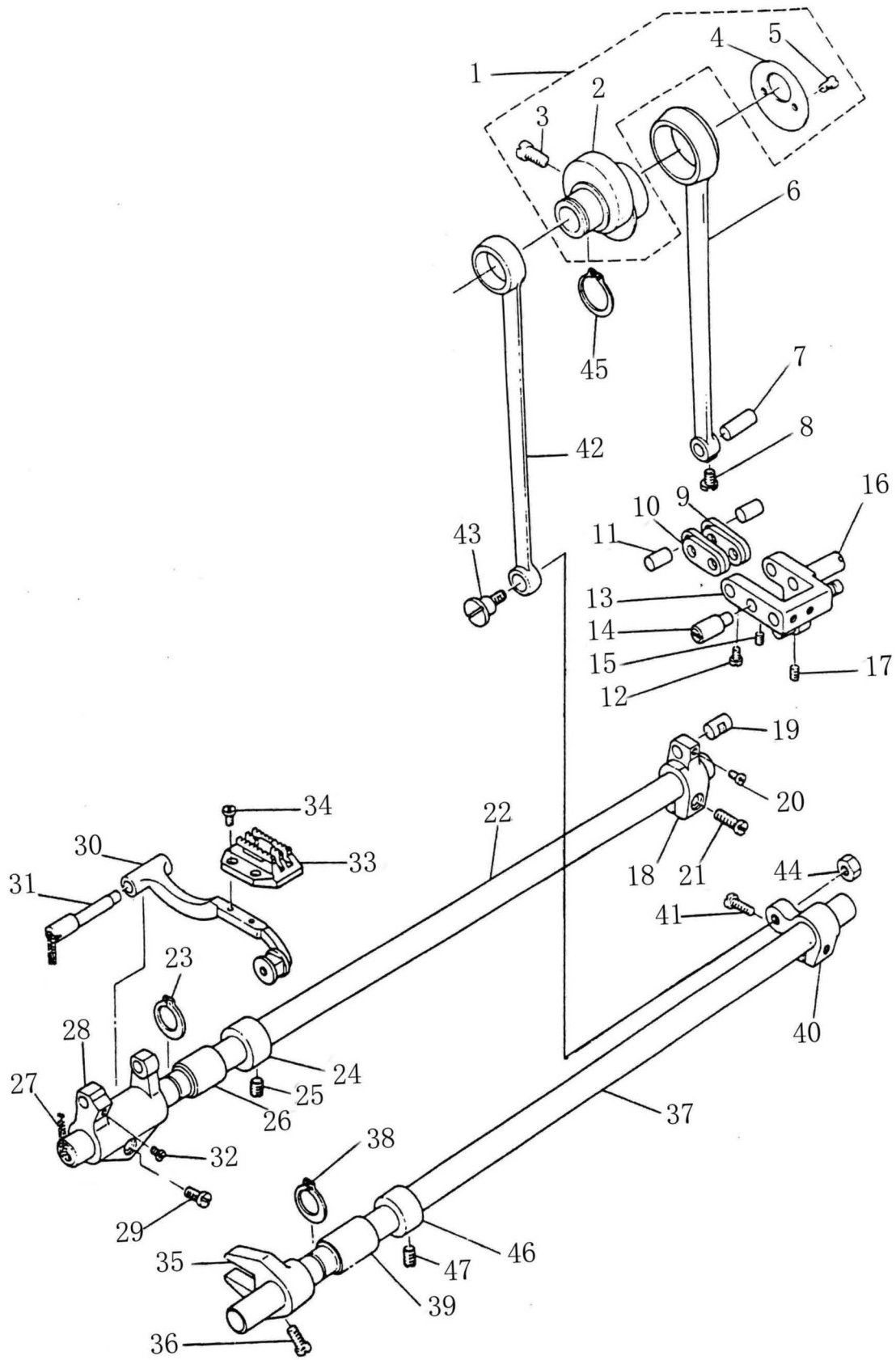
5. 勾线分组件 Hook driving shaft components



5. 勾线分组件 Hook driving shaft components

序号 Ref. No.	物料号 Part. No.	名称	Description	数量 Amt.
3	10010060	梭 芯	Bobbin	1
4		旋梭紧固螺钉	Screw	3
5	10010067	旋梭定位勾	Positioning finger	1
6	10010066	旋梭定位勾螺钉	Screw 11/64"×40 L=9.5	1
7	10010061	下轴	Hook driving shaft	1
8	10010064	下轴限油螺钉	Oil seal screw asm	1
9	10010063	下轴限油芯	Oil wick	1
10	10010058	下轴挡油圈	Thrust collar	1
11	10010059	下轴挡油圈螺钉	Screw 11/64"×40 L=3.5	2
12	10007234	下轴前轴套	Bushing asm. front	1
13	10010593	下轴前轴套螺钉	Screw 15/64"×28 L=4.7	1
14	10007268	下轴后轴套	Bushing rear	1
15	10010030	下轴后轴套螺钉	Screw 3/16"×28 L=15	1
16	10010058	下轴挡圈	Thrust collar asm.	1
17	10010059	下轴挡圈螺钉	Screw 11/64"×40 L=4.8	2
18	10003937	下轴伞齿轮 (小)	Pinion asm.	1
19	10010065	伞齿轮螺钉	Screw 1/4"×40 L=8	8
20	10010029	竖轴下伞齿轮 (大)	Gear asm. large	1
21	10007235	竖轴下轴套	Upright shaft bushing, lower	1
22	10003961	竖轴上轴套	Bushing, upper	1
23	10008972	竖轴上轴套螺钉	Screw 3/64"×28 L=9	1
24	10010057	竖 轴	Upright shaft	1
25	10010062	竖轴上伞齿轮 (小)	Pinion asm.	1
26	10010056	上轴伞齿轮 (大)	Gear asm.	1
27	10012451	剪线凸轮	Thread trmmer cam asm	1
28	10012472	剪线凸轮螺钉	Screw 1/4"×40 L=6	1
29	10010058	剪线凸轮挡圈	Can collar asm	1
30	10010055	剪线凸轮挡圈螺钉	Screw 11/64"×40 L=4.5	1
标准型 Typical model				
1	10013965	旋 梭	Hook asm.	1
2	10006924	梭 子	Bobbin case asm.	1
小旋梭厚料 Heavy weight material (small rotating hook)				
1	10013981	旋 梭	Hook asm.	1
2		梭 子	Bobbin case asm.	1

6. 送料分组件 Feed mechanism components



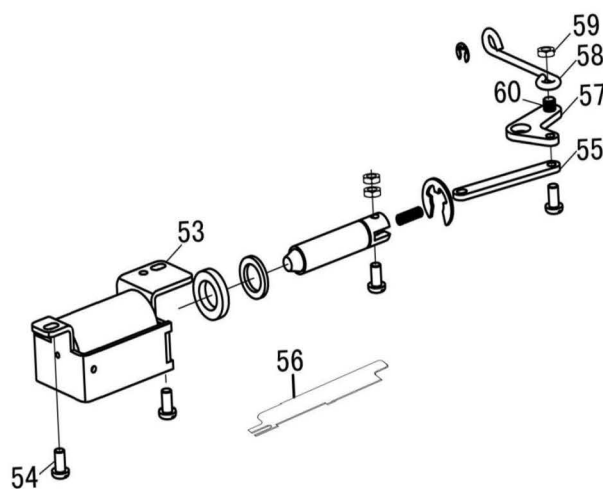
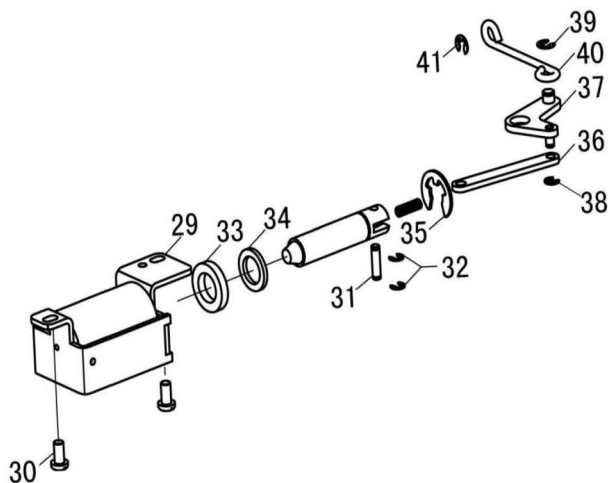
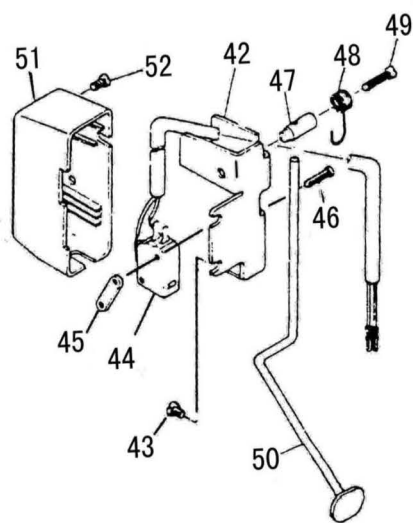
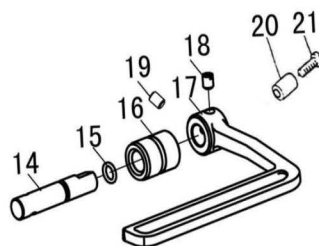
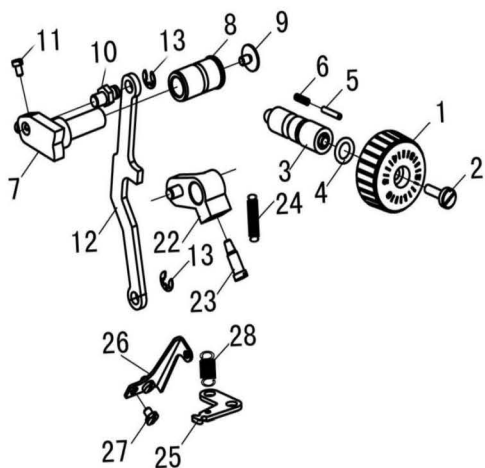
6. 送料分组件 Feed mechanism components

序号 Ref. No.	物料号 Part. No.	名称	Description	数量 Amt.
1	20004564	送料偏心轮部件	Feed drive eccentric cam asm.	1
2	10010115	送料偏心轮	Feed drive eccentric cam	1
3	10010092	送料偏心轮螺钉	Screw 1/4"X40 L=11	2
4	10010098	送料偏心轮盖板	Thrust collar	1
5	10010643	送料偏心轮盖板螺钉	Screw 9/64"X40 L=6	2
6	10010072	送料连杆	Rocker shaft connecting rod	1
7	10010069	送料连杆销	Walking foot pin	1
8	10010071	送料连杆销螺钉	Screw 9/64"X40 L=6	1
9	10010068	送料长摆动板	Walking foot link	2
10	10010075	送料短摆动板	Connecting link	2
11	10010087	短摆动板连接销	Walking foot pin	2
12	10010071	连接螺钉	Screw 9/64"X40 L=6	2
13	10012775	送料摆动板座部件	Walking foot adjust link	1
14	10010102	送料摆动板座右销	Adgusting link fulcrum shaft	1
15	10010506	左销螺钉	Screw 15/64"X40 L=7	1
16	10010102	送料摆动板座右销	Adgusting link fulcrum shaft	1
17	10010506	右销螺钉	Screw 15/64"X40 L=7	1
18	10010076	送料曲柄	Feed rocker shaft crank asm	1
19	10010096	送料曲柄销	Walking foot pin	1
20	10010071	曲柄销螺钉	Screw 9/64"X40 L=6	1
21	10010095	送料曲柄螺钉	Screw 3/16"X28 L=14	1
22	10028389	送料轴	Feed rocker shaft	1
23	10010090	送料轴轴用挡圈	Retaining ring	1
24	10010542	送料轴挡圈	Thrust collar asm.	1
25	10005020	送料轴挡圈螺钉	Screw 1/4"X40 L=6	2
26	10014116	送料轴前轴套	Feed rocker shaft bushing	1
27	10008067	送料轴油线	Oil wick	1
28	10004474	牙架座	Feed rocker asm.	1
29	10004993	牙架座螺钉	Screw 3/16"X28 L=14	1
30	20002335	牙架部件	Feed bar asm.	1
31	10004440	牙架销	Feed bar shaft	1
32	10010074	牙架销螺钉	Screw 11/64"X40 L=7	1
34	10010099	送料牙螺钉	Screw 1/8"X44 L=6	2
35	10010100	拾牙叉形曲柄	Driving shaft crank asm. front	1
36	10010093	拾牙叉形曲柄螺钉	Screw 11/64"X40 L=10.5	1
37	10010097	拾牙轴	Feed driving shaft	1
38	10010090	拾牙轴轴用挡圈	Retaining ring	1
39	10014116	拾牙轴前轴套	Feed rocker shaft bushing	1
40	10010086	拾牙后曲柄	Rear crank asm.	1
41	10010095	拾牙后曲柄螺钉	Screw 3/16"X28 L=12	1

6. 送料分组件 Feed mechanism components

序号 Ref.No.	物料号 Part.No.	名称	Description	数量 Amt.
42	10010084	拾牙连杆	Connecting rod	1
43	10010091	拾牙连杆轴位螺钉	Hinge screw	1
44	10004475	拾牙连杆轴位螺母	Nut 9/32"X28	1
45	10010089	拾牙连杆轴用挡圈	Snap ring	1
46	10010542	拾牙轴挡圈	Thrust collar asm.	1
47	10005020	拾牙轴挡圈螺钉	Screw 1/4"X40 L=6	2
标准型 Typical model				
33	10011066	送料牙	Feed dog	1
小旋梭厚料 Heavy weight material (small rotating hook)				
33	10007322	送料牙	Feed dog	1

7. 送料调节分组件 Feed regulating components

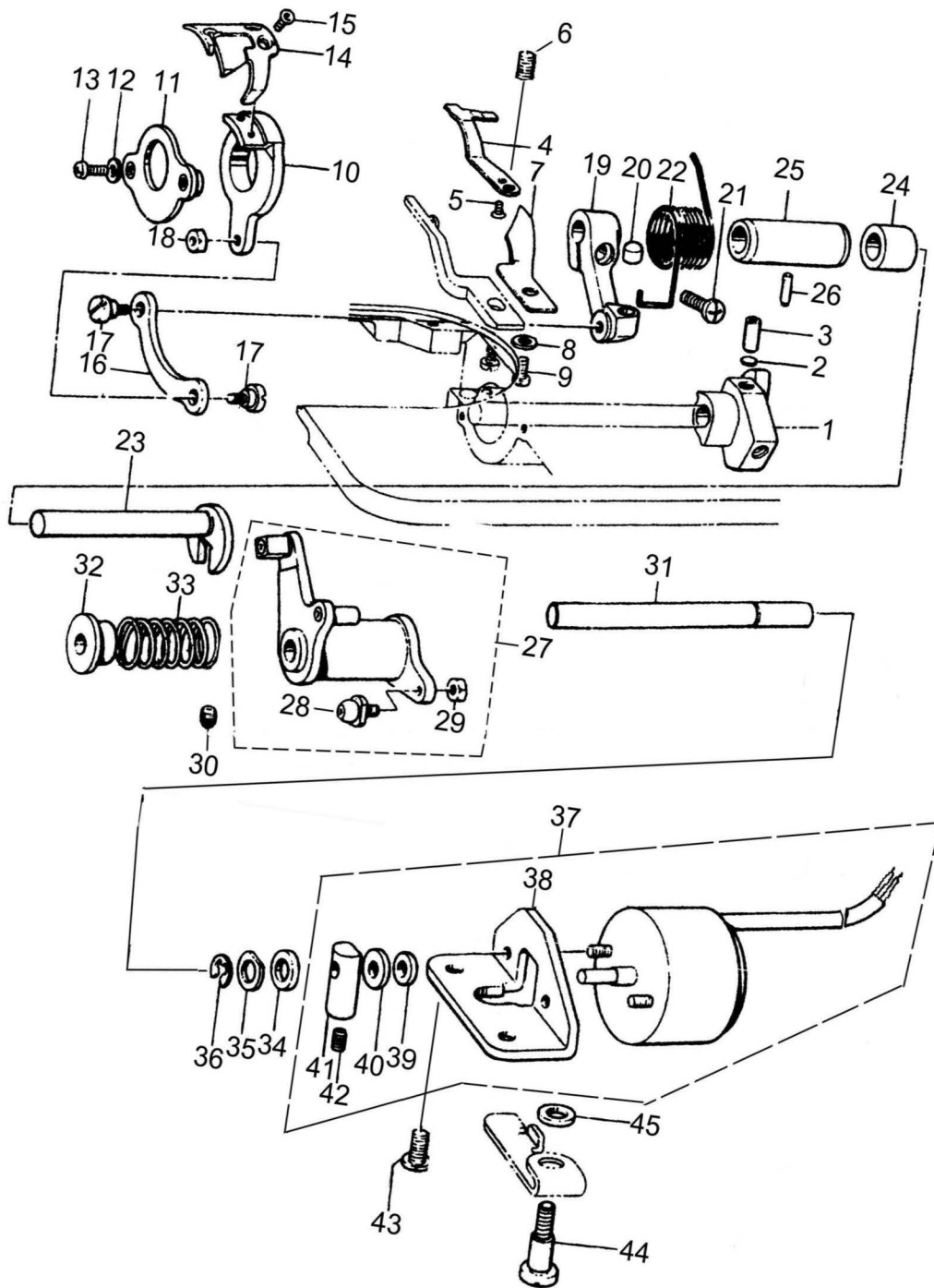


7. 送料调节分组件 Feed regulating components

序号 Ref. No.	物料号 Part. No.	名称	Description	数量 Amt.
2	10010281	送料距旋钮螺钉	Screw 3/16"X28 L=9	1
3	10010286	送料调节螺柱	Feed regulator screw	1
4	10010240	送料调节螺柱O形圈	Rubber ring	1
5	10013870	送料距锁合销	Pin	1
6	10013869	送料距锁合簧	Spring	1
7	10010242	送料调节器	Feed regulator	1
8	10014120	送料调节器轴套	Feed regulator bushing	1
9	10010238	送料调节器轴套螺钉	Screw	1
10	10010288	倒送料连杆销	Feed regulator pin	1
11	10010643	连杆销螺钉	Screw 9/64"X40 L=6	1
12	10012800	倒送料连杆	Feed regulator connecting rod	1
13	10010649	倒送料连杆挡圈	Snap ring	2
14	10010241	倒送料轴	Feed reverse shaft	1
15	10010243	倒送料轴O形圈	Rubber ring	1
16	10014119	倒送料轴轴套	Feed lever metal	1
17	20005704	倒送料扳手	Reverse feed control lever	1
18	10003921	倒送料扳手定位螺钉	Screw 1/4"X40 L=8	1
19	10003921	倒送料扳手螺钉	Screw 1/4"X40 L=8	1
22	20001767	倒送料曲柄部件	Feed reverse arm asm.	1
23	10010236	倒送料曲柄螺钉	Feed reverse arm screw	1
26	10010282	摆动板座复位板	Addgusting link spring guide	1
27	10010285	复位板螺钉	Screw 11/16"X40 L=5	2
标准型 Typical model				
1	10014418	送料距旋钮	Fdde dial	1
20	10003921	倒送料扳手挡圈	Reverse feed lever stopper	1
21	10012799	挡圈螺钉	Screw 3/16"X28 L=18	1
24	10010237	倒送料拉簧	Feed reverse spring	1
25	10010235	拉簧固定板	Feed spring hook	1
28	10012796	摆动板座复位簧	Addgusting link spring	1
小旋梭厚料 Heavy weight material (small rotating hook)				
1	10014418	送料距旋钮	Feed dial	1
20	10012984	扳手限位架	Reverse feed lever stopper	1
21	10012992	螺钉	Screw	1
24	10012991	倒送料拉簧	Adgusting link spring	1
25	10012987	拉簧固定板	Feed spring hook	1
28	10012990	摆动板座复位簧	Feed reverse spring	1

标准型 Typical model				
序号 Ref. No.	物料号 Part. No.	名称	Description	数量 Amt.
29	10005994	倒送料电磁铁	Reverse feed magnet asm.	1
30	10012473	安装螺钉	Screw 15/64"X28 L=12	2
31	10005993	铁芯连接销	Plunger arm pin	1
32	10012795	连接销挡圈	Snap ring	2
33	10005961	铁芯橡胶垫	Rubber plunger	1
34	10005966	铁芯垫	Washer	1
35	10003232	铁芯挡圈	Snap ring	1
36	10005964	铁芯连杆	Reverse feed connecting link	1
37	10012824	自动倒送料曲柄部件	Connecting arm asm.	1
38	10012795	曲柄短销挡圈	Snap ring	1
39	10007895	曲柄长销挡圈	Snap ring	1
40	10012797	自动倒送料拉杆	Reverse feed connecting shaft	1
41	10010649	拉杆挡圈	Snap ring	1
42	10005949	开关支承架	Reverse feed switch plate	1
43	10006285	支承架安装螺钉	Screw 3/16"X28 L=9	2
44	10005956	微动开关	Reverse feed switch	1
45	10005955	微动开关安装板	Reverse feed switch plate	1
46	10003033	开关螺钉	Screw M3X16	2
47	10005960	开关杆销	Reverse feed switch shaft	1
48	10005962	开关复位簧	Reverse feed switch spring	1
49	10006285	开关杆定位螺钉	Screw	1
50	10005963	开关杆部件	Reverse feed switch lever	1
51	10005965	手触倒送料开关罩	Reverse feed switch lever	1
52	10010074	开关罩安装螺钉	Screw 11/64"X40 L=6	1
小旋梭厚料 Heavy weight material (small rotating hook)				
53	10006110	倒送料电磁铁	Reverse feed magnet asm.	
54	10006108	铁芯连杆	Reverse feed connecting link	
55	10006109	电磁铁支撑板		
56	10012989	自动倒送料曲柄部件	Connecting arm	
57	10012797	自动倒送料拉杆	Reverse feed connecting shaft	1
58	10012985	螺母	Nut	
59	10012983	螺钉	Screw	1
42	10005949	开关支承架	Reverse feed switch plate	1
43	10006285	支承架安装螺钉	Screw 3/16"X28 L=9	2
44	10005956	微动开关	Reverse feed switch	1
45	10005955	微动开关安装板	Reverse feed switch plate	1
46	10003033	开关螺钉	Screw M3X16	2
47	10005960	开关杆销	Reverse feed switch shaft	1
48	10005962	开关复位簧	Reverse feed switch spring	1
49	10006285	开关杆定位螺钉	Screw	1
50	10005963	开关杆部件	Reverse feed switch lever	1
51	10005965	手触倒送料开关罩	Reverse feed switch lever	1
52	10010074	开关罩安装螺钉	Screw 11/64"X40 L=6	1

8. 1剪线分组件(旋刀) Thread trimmer components
 (旋刀组件 Round knife components)



8.1剪线分组件(旋刀) Thread trimmer components

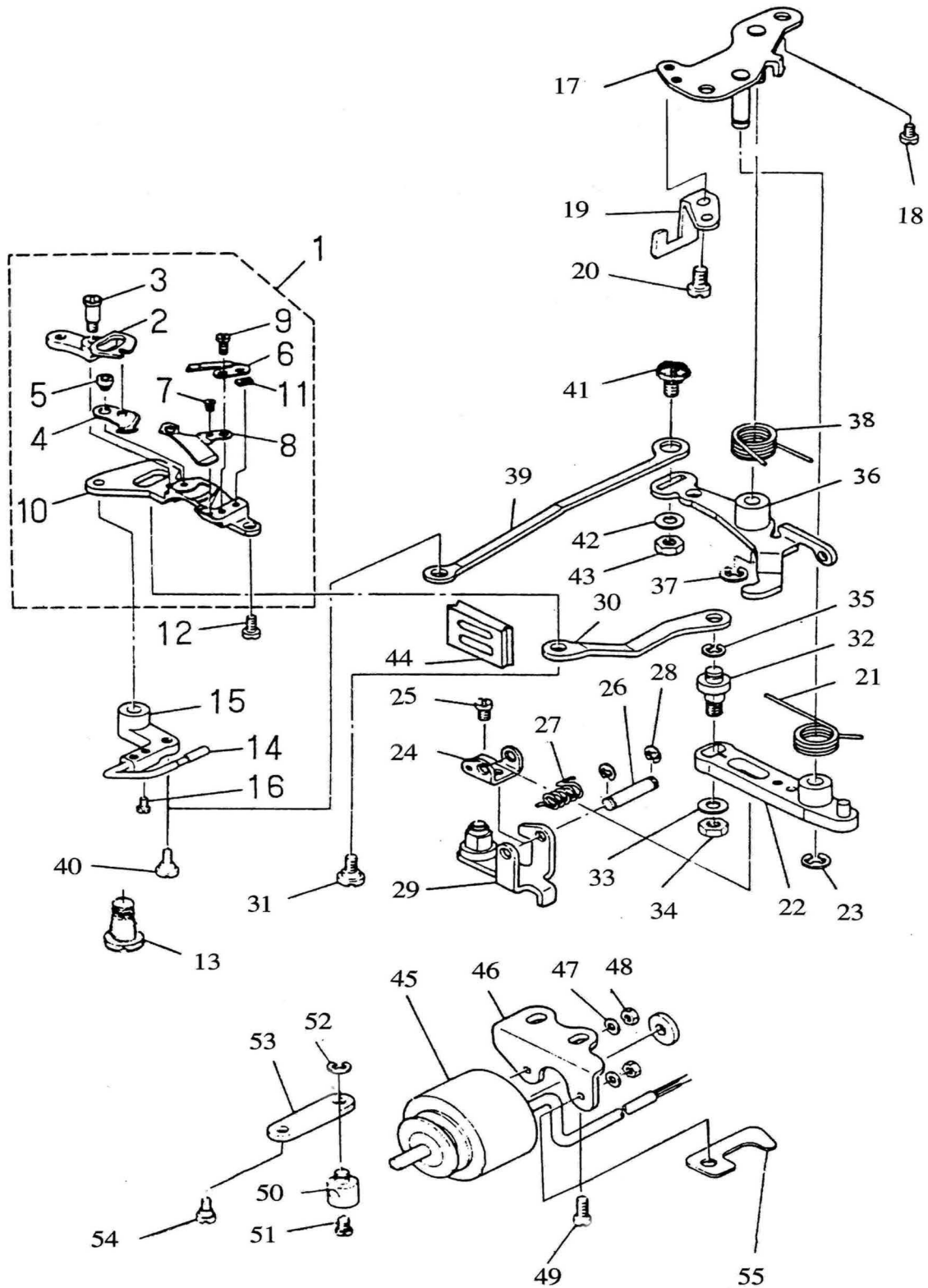
(旋刀组件 Round knife components)

序号 Ref. No.	物料号 Part. No.	名称	Description	数量 Amt.
1	10010736	剪线凸轮	THREAD TRIMMER CAM	1
2	10023739	剪线凸轮垫	CAM COLLER	2
3	10013465	剪线凸轮螺钉	SCREW	2
4	10011421	定刀	CONNTER KNIFE	1
5	10011422	定刀固定螺钉	SCREW	1
6	10024496	定刀调压螺钉	SCREW	1
7	10011584	分线器	DISPART THREAD SHUTTLE	1
8	10013154	分线器固定螺钉垫圈	WASHER	1
9	10011497	分线器固定螺钉	SCREW	1
10	10004640	动刀架	ROUND KNIFE BRACKET	1
11	10008856	刀架压板组件	KNIFE HOLDER ASM.	1
12	10013154	刀架压板垫圈	WASHER	2
13	10013541	刀架压板螺钉	SCREW	2
14	10011494	动刀	ROUND KNIFE	1
15	10011588	动刀固定螺钉	SCREW	2
16	10011577	刀轴连杆	KNIFE SHAFT CRACK ROD	1
17	10011514	刀轴连杆螺钉	SCREW	1
18	10011578	刀轴连杆螺母	NUT	1
19	10011579	切线驱动曲柄	TRIMMING CRANK	1
20	10011580	切线驱动曲柄止动块	BLOCK	1
21	10008863	切线驱动曲柄螺钉	SCREW	1
22	10011649	复位弹簧	REPLACE SPRING	1
23	10008866	切线驱动曲柄轴	TRIMMING CRANK SHAFT	1
24	10011630	驱动曲柄轴短套	SHORT BUSHING	1
25	10012454	切线轴套	BUSHING	1
26	10012062	切线轴套紧定螺钉	SCREW	1
27	10011686	切线凸轮曲柄组件	TRIMMING CRANK CRANK CAM	1
28	10004650	滚柱轴分组件	ROLLER BEARING SHAFT ASM.	
29	10011578	螺母	NUT	1
30	10008862	切线凸轮曲柄紧定螺钉	SCREW	1
31	10011697	切刀驱动轴	TRIMMING SHAFT	1
32	10014196	扭簧端盖	SPRING CVER	1
33	10008812	剪线电磁铁复位弹簧	SPRING	1
34	10011650	切线磁铁垫圈	WASHER	1
35	10003020	切线驱动轴垫圈	CLIP	1
36	10009654	切线驱动轴卡圈	WASHER	1
37	10008838	剪线电磁铁组件	THREAD TRIMMER SOLENOID ASM.	1
38	10008854	剪线电磁铁安装座	SOLENOID BASE	1
39	10011606	电磁铁缓冲垫	WASHER	1
40	10011845	垫圈	WASHER	1

8.1剪线分组件(旋刀) Thread trimmer components
(旋刀组件 Round knife components)

序号 Ref. No.	物料号 Part. No.	名称	Description	数量 Amt.
41	10011607	切线电磁铁连接体	SOLENOID CONNECTING SHAFT	1
42	10013590	固定螺钉	SCREW	1
43	10011605	剪线电磁铁固定螺钉	SCREW	1
44	10012467	松线座螺钉	SCREW	1
45	10008865	切线电磁铁架垫圈	WASHER	1

8.2、剪线分组件 Thread trimmer components
 (平刀组件 Straight knife components)



8.2、剪线分组件 Thread trimmer components

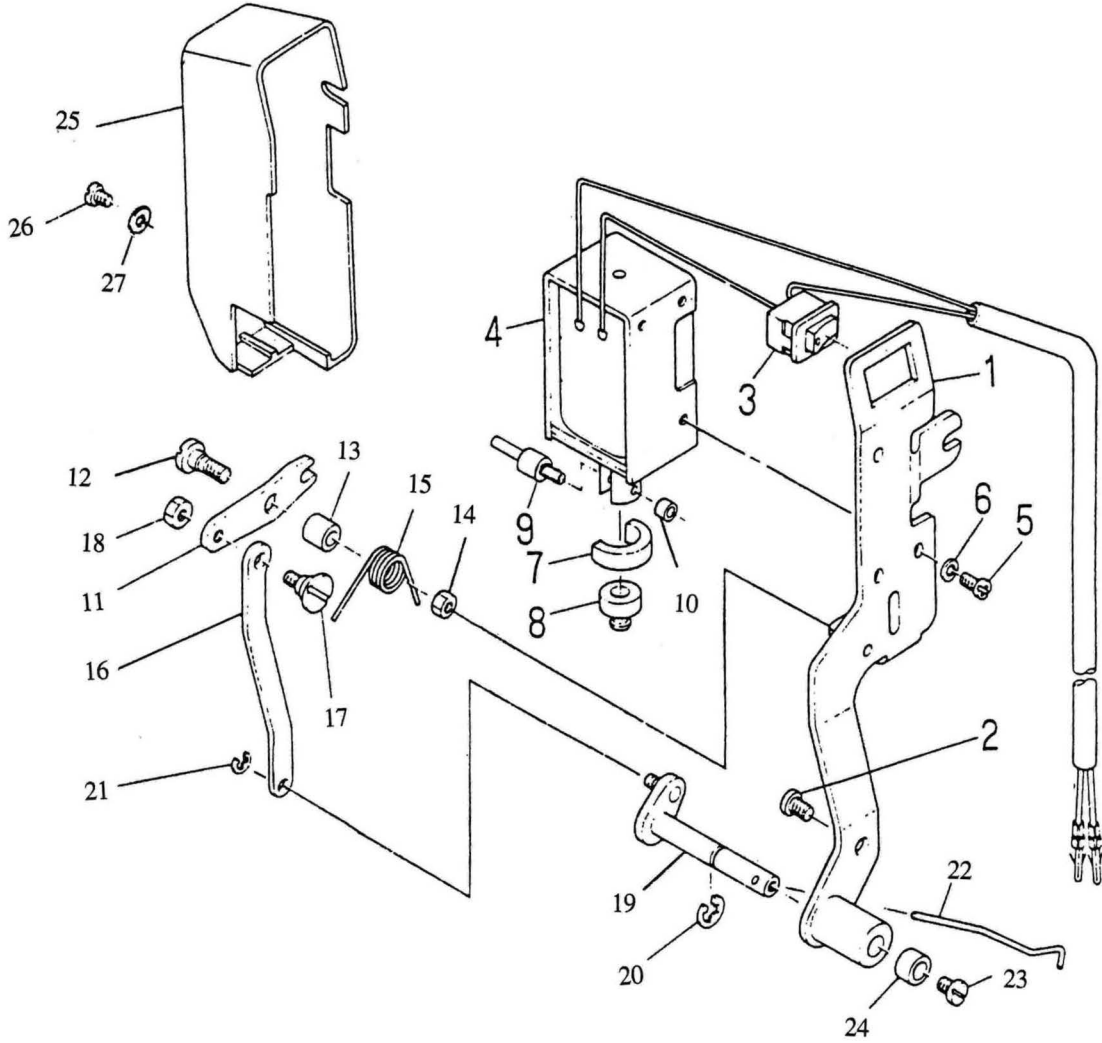
(平刀组件 Straight knife components)

序号 Ref. No.	物料号 Part. No.	名称	Description	数量 Amt.
12	10010093	剪线刀座螺钉	Screw 11/64"X40 L=7	1
13	10014481	挡线器座轴位螺钉	Thread take-up screw	1
14	10012415	挡线器部件	Thread take-up picker asm.	1
16	10012732	挡线器螺钉	Screw 9/64"X40 L=5	2
17	10014478	剪线驱动座部件	Base plate asm.	1
18	10012473	驱动座安装螺钉	Screw 15/64"X28 L=9	2
19	10005804	剪线驱动部件	Driving arm stopper asm.	1
20	10010074	螺钉	Screw 11/64"X40 L=7	1
21	10005846	剪线驱动曲柄复位簧	Clutch spring	1
22	10005655	剪线驱动曲柄部件	Clutch plate asm.	1
23	10007859	剪线曲柄定位挡圈	Snap ring	1
24	10005636	托板支承架	Roller arm bracker	1
25	10010016	托板支承架螺钉	Screw 9/64"X40 L=6	1
26	10005668	托板支承架销	Roller fulcrum shaft	1
27	10005676	托板复位簧	Roller return spring	1
28	10012795	托板支承架销挡圈	Snap ring	2
29	10005805	凸轮滚柱托板部件	Roller arm asm.	1
30	10005660	动力驱动拉杆	Moving knife link	1
31	10012450	摆动叉驱动轴位螺钉	Screw	1
32	10005628	拉杆连接销	Moving knife link pin	1
33	10005637	连接销垫圈	Washer	1
34	10005808	连接销螺母	Nut	1
35	10010649	连接销挡圈	Snap ring	1
36	10012569	剪线离合架部件	Clutch plate asm.	1
37	10007859	离合架挡圈	Snap ring	1
38	10005670	离合架复位簧	Clutch spring	1
39	10005657	挡线器拉杆	Picker link	1
40	10012733	挡线器拉杆轴位螺钉	Hinge screw	1
41	10005659	挡线器拉杆连接销	Picker link pin	1
42	10005637	垫圈	Washer	1
43	10005808	垫圈螺母	Nut	1
44	10005630	挡油块	Oil shield plate	1
45	10012414	剪线电磁铁	Thread trimmer solenoid	1
46	10005667	剪线电磁铁支架	Solenoid base	1
47	10002949	支架连接垫圈	Washer	2
48	10005297	支架连接螺母	Nut	2
49	10012473	支架安装螺钉	Screw 15/64"X40 L=12	2
50	10012413	剪线电磁铁节头	Solenoid pin	1
51	10010074	节头螺钉	Screw 11/64"X40 L=7	1
52	10010649	节头挡圈	Snap ring	1
53	10012601	剪线电磁铁拉杆	Clutch link	1
54	10012774	离合架拉杆轴位螺钉	Hinge screw	1
55	10010295	压板	Tube holder	1

8. 剪线分组件 Thread trimmer components

序号 Ref. No.	物料号 Part. No.	名称	Description	数量 Amt.
标准型 Typical model				
1	10013183	剪线刀部件	Knife unit	1
2	10006025	动力摆动叉	Forked base for knife	1
3	10012600	摆动叉轴位螺钉	Hinge screw	1
4	10005968	动力部件	Moving knife asm.	1
5	10005806	动力轴位螺钉	Moving knife hinge screw	1
6	10005671	定 刀	Counter knife	1
7	10006242	定刀螺钉	Screw 1/8"X44 L=6	2
8	10005669	剪线导线钩	Thread guide for knife	1
9	10005664	剪线导线钩螺钉	Screw 3/32"X56 L=2.3	1
10	10006021	剪线刀座	Knife mounting base	1
11	10005665	定刀安装板	Counter knife spacer	1
15	10012442	挡线器座	Picker arm	1
小旋梭厚料 Heavy weight material (small rotating hook)				
1	10006124	剪线刀部件	Knife unit	1
2	10006122	动力摆动叉	Forked base for knife	1
3	10012600	摆动叉轴位螺钉	Hinge screw	1
4	10006129	动力部件	Moving knife asm.	1
5	10006120	动力轴位螺钉	Moving knife hinge screw	1
6	10006128	定 刀	Counter knife	1
7	10006242	定刀螺钉	Screw 1/8"X44 L=6	2
8	10006127	剪线导线钩	Thread guide for knife	1
9	10005664	剪线导线钩螺钉	Screw 3/32"X56 L=2.3	1
10	10006130	剪线刀座	Knife mounting base	1
11	10005665	定刀安装板	Counter knife spacer	1
15	10012442	挡线器座	Picker arm	1

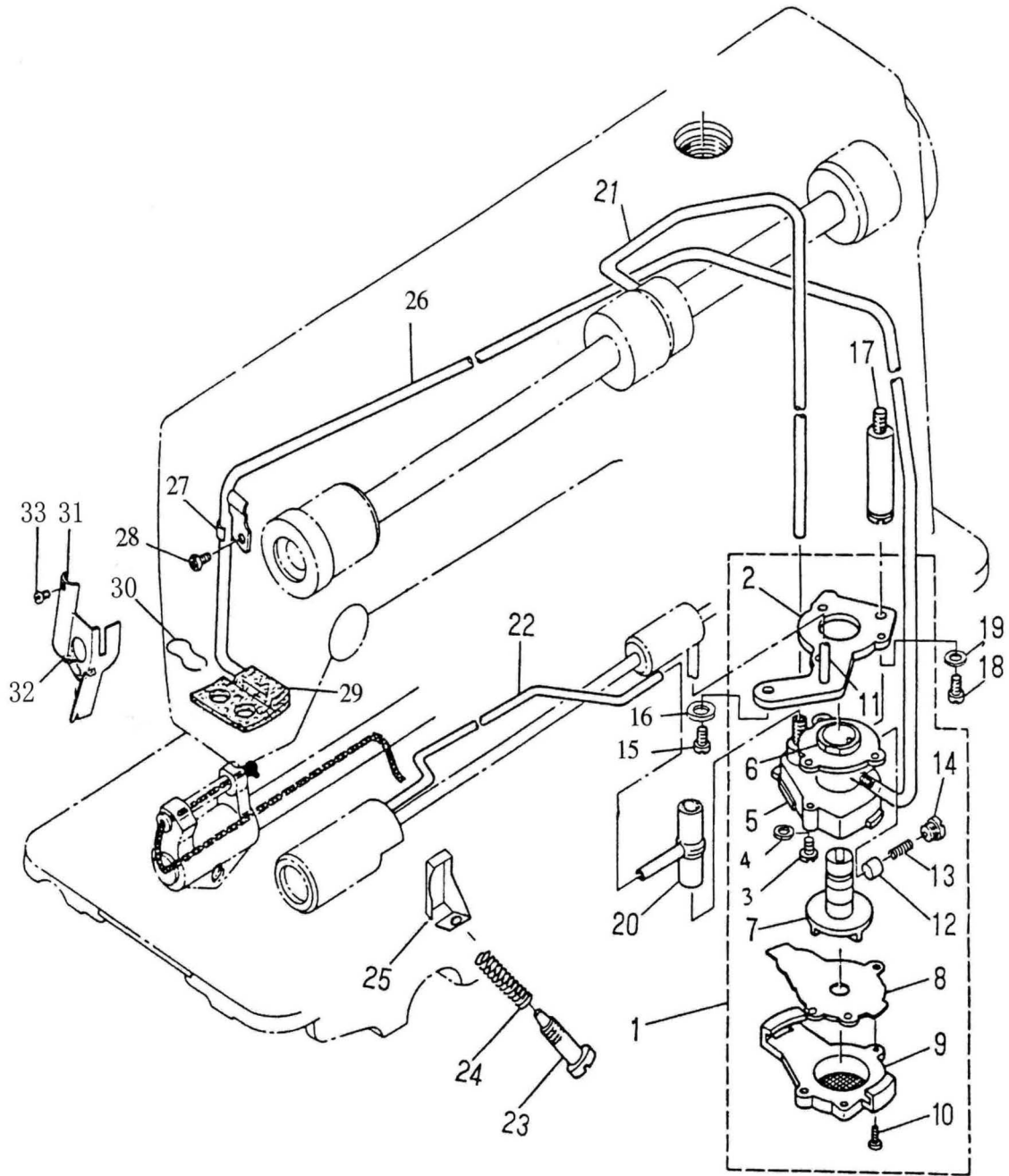
9. 拨线分组件 Wiper components



9. 拨线分组件 Wiper components

序号 Ref. No.	物料号 Part. No.	名称	Description	数量 Amt.
1	10005723	拨线电磁铁支架部件	Wiper base asm.	1
2	10008972	支架安装螺钉	Screw 3/16"X28 L=9	1
3	10005731	拨线器开关	Power source switch asm.	1
4	10005736	拨线电磁铁	Wiper solenoid	1
5	10003036	拨线电磁铁安装螺钉	Screw M3X0.5 L=6	3
6	10003082	安装螺钉垫圈	Spring washer	3
7	10005739	铁芯橡皮垫	Wiper rubber	1
8	10012488	铁芯复位垫	Wiper rubber	1
9	10005719	铁芯传动销	Wiper solenoid pin	1
10	10005769	传动销滚柱	Wiper link collar	1
11	10005728	拨线传动板	Wiper link	1
12	10005726	传动板轴位螺钉	Hinge screw	1
13	10005767	轴位螺钉定位轴套	Wiper hinge screw collar	1
14	10005735	轴位螺钉螺母	Nut	1
15	10005770	传动板复位簧	Wiper spring	1
16	10005727	拨线拉杆	Connecting link	1
17	10005738	拉杆轴位螺钉	Wiper link hinge screw	1
18	10005766	拉杆轴位螺钉螺母	Nut	1
19	10005730	拨线驱动轴部件	Wiper driving shaft asm.	1
20	10010649	拨线驱动轴挡圈	Snap ring	1
21	10024749	拨线拉杆轴挡圈	Snap ring	1
22	10005765	拨线杆	Wiper	1
23	10005734	拨线杆紧固螺钉	Screw 9/64"X40 L=5	1
24	10005725	螺钉套圈	Bracket installing collar	1
25	10005724	拨线器罩	Wiper cover	1
26	10003036	拨线器罩螺钉	Screw M3X0.5 L=6	1
27	10003017	拨线器罩螺钉垫圈	Wiper cover spring washer	1

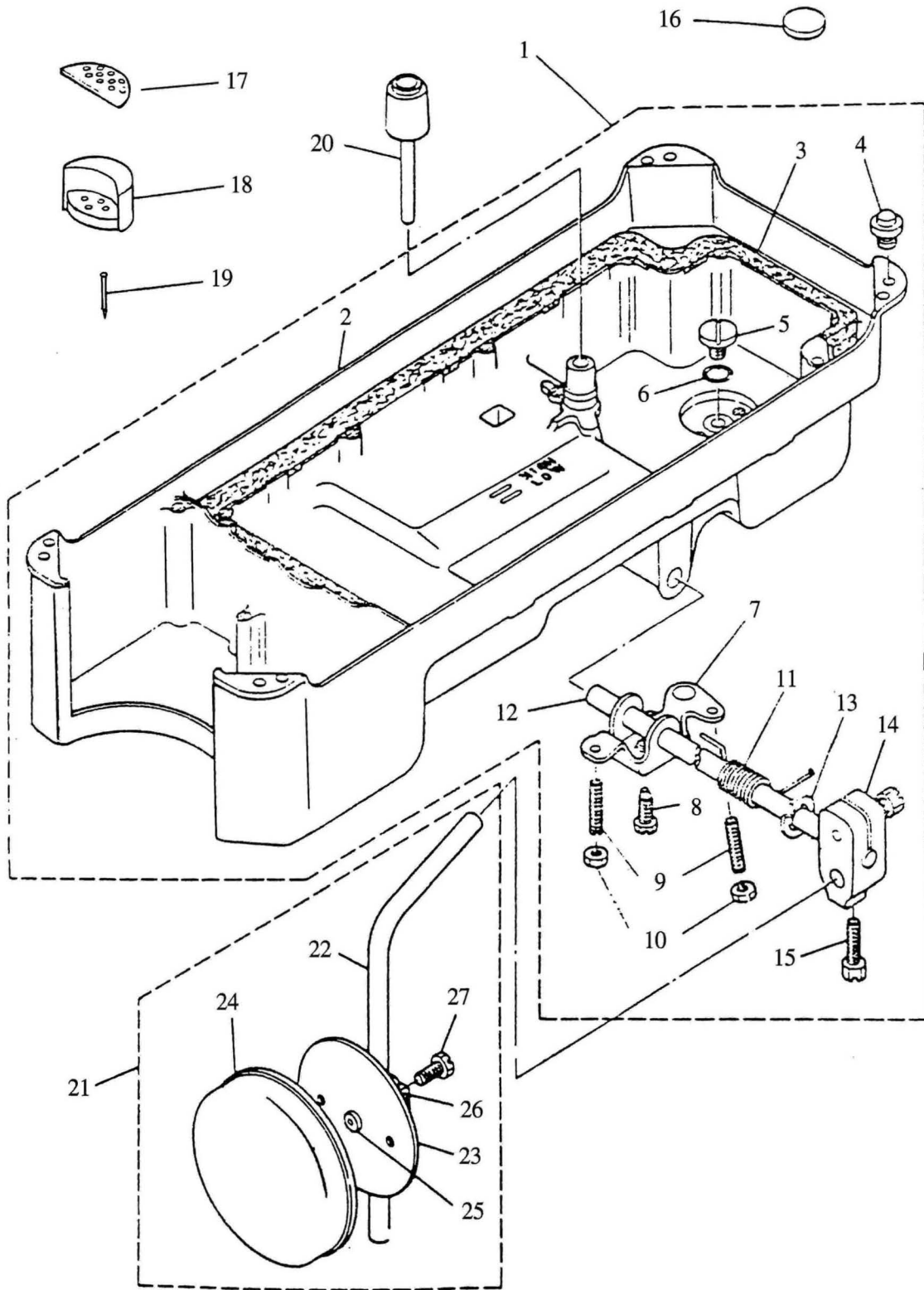
10、润滑分组件 Lubrication components



10、润滑分组件 Lubrication components

序号 Ref.No.	物料号 Part.No.	名称	Description	数量 Amt.
1	10008817	油泵部件	Lubricating oil pump asm.	1
2	10004046	油泵安装板	Oil pump installing base	1
3	10004062	油泵安装螺钉	Screw 15/64"X28 L=9	3
4	10004057	安装止退垫圈	Washer	3
5	10002476	油泵体分部件	Oil pump	1
6	10004061	油泵体衬套	Oil pump bushing	1
7	10004063	油泵叶轮	Oil pump impeller	1
8	10004066	油泵叶轮托板	Oil pump impeller cover	1
9	10004058	油泵盖部件	Lubricating oil pump cover	1
10	10004064	油泵盖螺钉	Screw	3
11	10004060	下轴供油管	Hook driving shaft oil tube	1
12	10004056	回油柱塞	Plunger	1
13	10004059	柱塞簧	Plunger spring	1
14	10004043	柱塞螺钉	Plunger screw	1
15	10011161	油泵螺钉	Screw	1
17	10012505	油泵连接螺柱	Oil pump support	1
18	10010066	螺柱连接螺钉	Screw 11/64"X40 L=9.5	1
19	10003281	螺柱连接螺钉垫圈	Washer	1
20	10010340	供油管接头	Rubber joint	1
21	10010343	上轴供油管	Main shaft oil tube	1
22	10010345	旋梭供油管	Oil tube	1
23	10010344	旋梭油量调节螺钉	Oil adjusting screw	1
24	10010341	旋梭油量调节簧	Spring	1
25	10012506	下轴前轴套挡油罩	Oil shield guard	1
26	10007795	回油管	Oil return tube	1
27	10004476	回油管夹	Oil return tube holder	1
28	10008934	回油管夹螺钉	Screw 3/16"X28 L=6	1
29	10010342	回油除尘毡	Anti-dust oil felt	1
30	10010294	回油毡夹	Oil felt presser	1
31	10004065	面部防油板	Arm oil shield	1
32	10004045	防油板油线	Oil wick	1
33	10005558	防油板螺钉	Screw 1/8"X44 L=4	1

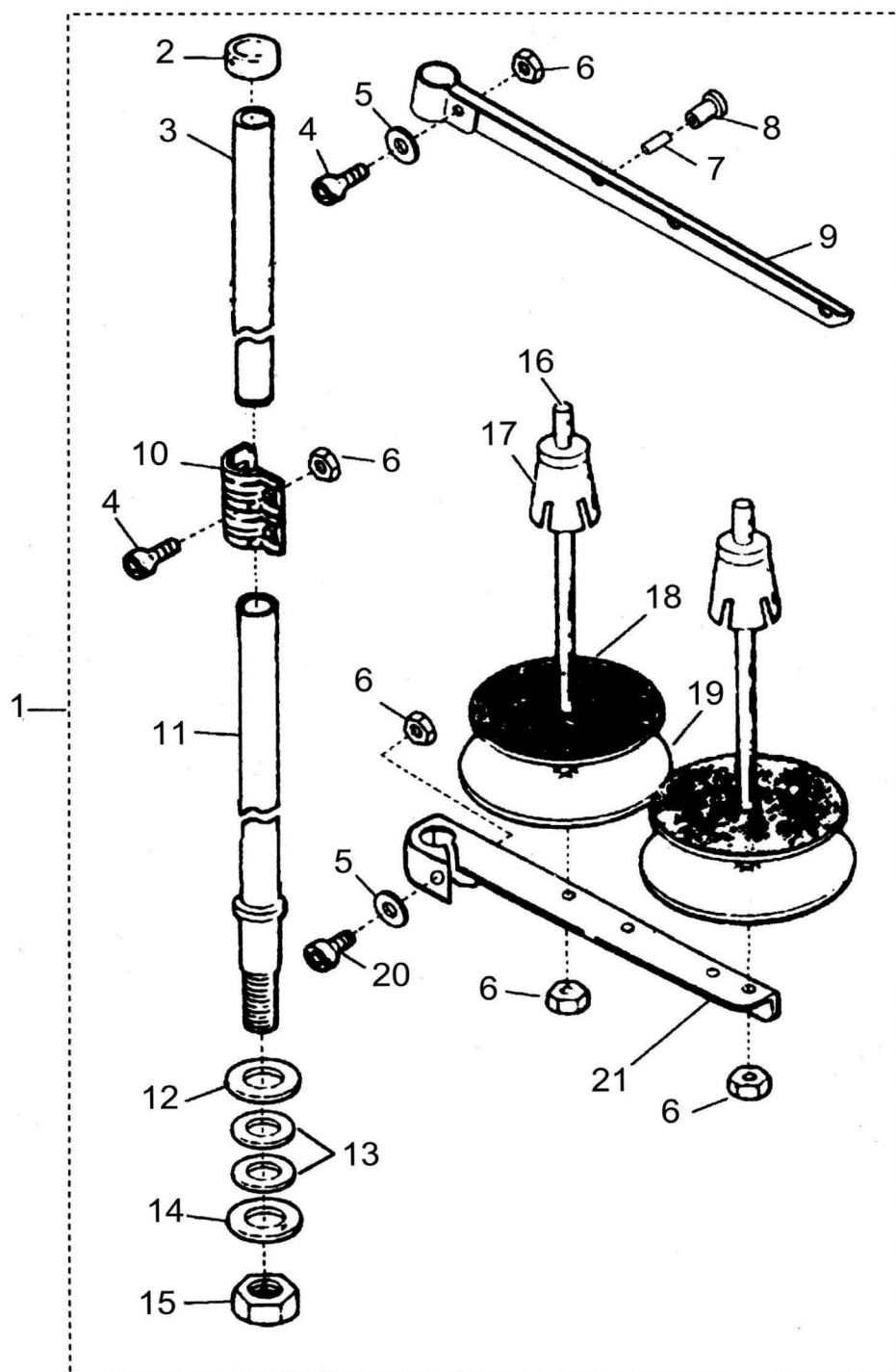
11、油盘膝抬压脚分组件 Pressor foot components of oil plate knee lift



11、油盘膝拾压脚分组件 Pressor foot components of oil plate knee lift

序号 Ref. No.	物料号 Part. No.	名称	Description	数量 Amt.
1	20002951	油盘部件	Oil plate components	1
2	10008313	油 盘	Oil plate	1
3	10014194	油 盘 垫	Oil plate bed	1
4	10009993	机头座垫	Machine head bed	1
5	10009991	排油孔螺钉	Oil extraction hole screw	1
6	10009988	排油孔螺钉O形圈	"O"ring	1
7	10009987	拾压脚双向曲柄	Two-way crank	1
8	10003898	双向曲柄螺钉	Screw of two-way crank	1
9	10003895	双向曲柄限位调节螺钉	Banking screw of two-way crank	2
10	10003890	双向曲柄限位调节螺母	Banking nut of two-way crank	2
11	10003893	双向曲柄扭簧	Twisting spring of two-way	1
12	10003899	拾压脚轴	Lifting pressor foot shaft	1
13	10002559	拾压脚轴开口挡圈	Snap ring	1
14	10003896	拾压脚操纵杆节头	Bracket	1
15	10003894	操纵杆节头螺钉	Operating bar head screw	2
16	10003892	油盘磁铁	Oil plate magnet	1
17	10009993	油盘座垫	Oil plate bed	2
18	10009986	油盘支座	Oil plate seat	2
19	10003889	油盘座钉	Oil plate seat nail	4
20	10004222	拾压脚顶销	Top pin of lifting pressor foot	1
21	10009985	操纵杆部件	Components of operating bar	1
22	10003901	操 纵 杆	Operating bar	1
23	10003891	操 纵 板	Operating plate	1
24	10004223	操纵板软垫	Soft cushion of operating bar	1
25	10003900	操纵杆垫	Operating bar bed	1
26	10003897	操纵杆节头	Operating bar tip	1
27	10003894	节头螺钉	Tip screw	1

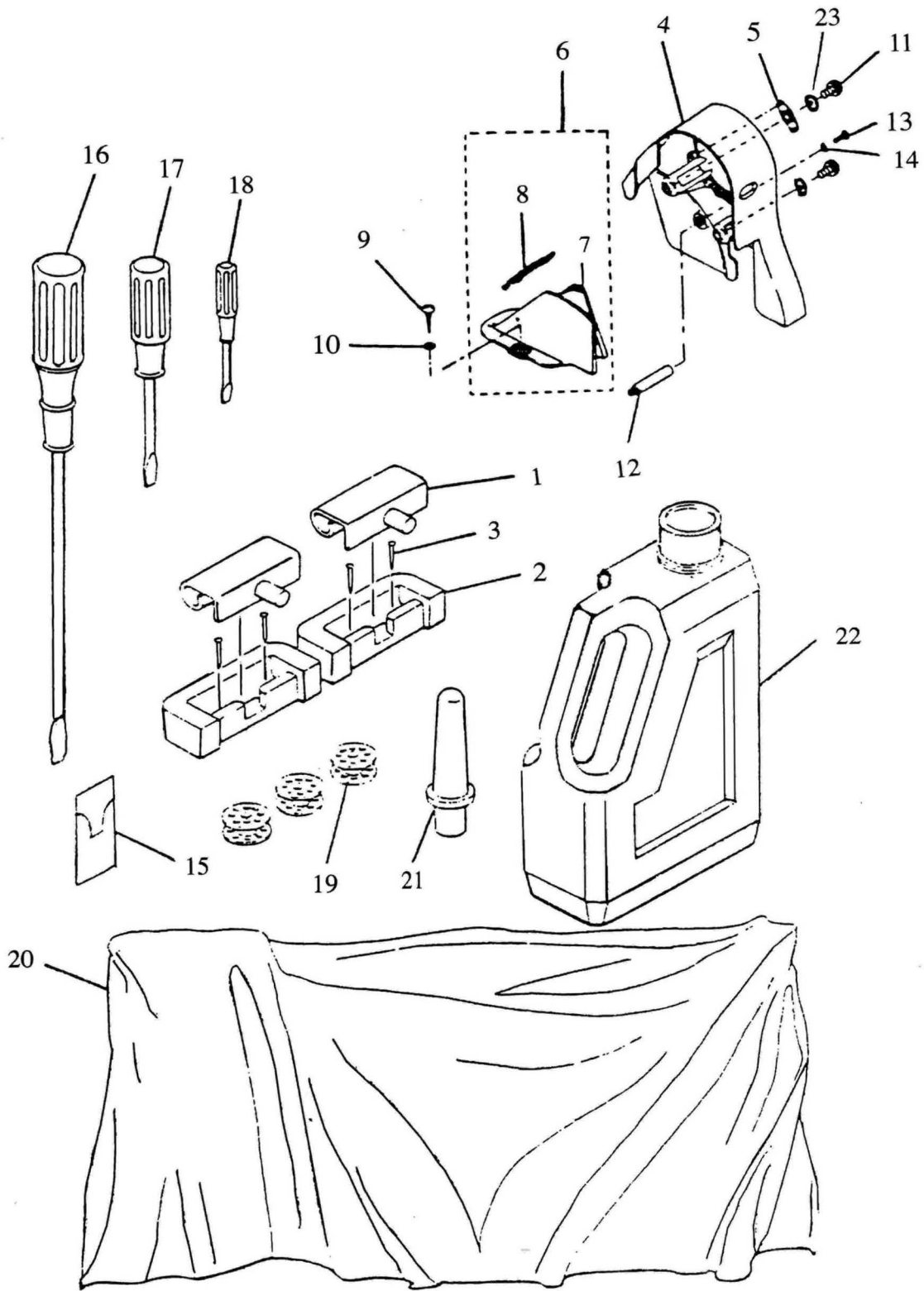
12、过线架分组件 Components of thread-running stand



12、过线架分组件 Components of thread-running stand

序号 Ref. No.	物料号 Part. No.	名称	Description	数量 Amt.
1	10007130	二线架组件	THREAD STAND ASM	
2	10004282	撑管套	COLUMN CAP	1
3	10004293	线架上撑管	COLUMN PIPE (UPPER)	2
4	10003301	上过线架螺钉	SCREW	2
5	10003022	上过线架垫圈	WASHER	5
6	10002953	上过线架螺母	NUT	1
7	10004289	过线管	THREAD GUIDE PIPE	1
8	10004285	过线管套	THREAD GUIDE BUSHING	1
9	10004298	上过线架	THREAD HANGER (2SPOOLS TUPE)	1
10	10004286	撑管夹	COLUMN PIPE CONNECTOR	1
11	10004291	线架下撑管	COLUMN PIPE (LOWER)	1
12	10004295	线架下撑管垫圈2	WASHER	1
13	10004290	线架下撑管垫圈1	WASHER	1
14	10004295	垫圈	WASHER	2
15	10002953	下过线架螺母	NUT	1
16	10004288	线轴	SPOOL PIN	2
17	10004287	线盘塑料压块	SPOOL CUSHION	2
18	10004281	线盘软垫	SOFT CUSHION OF THREAD PLATE	2
19	10004299	线盘	THREAD PLATE	2
20	10003312	下过线架螺钉	SCREW	1
21	10004284	下过线架	THREAD HANGER (LOWER)	1

13、附件 Accessories



13. 附件 Accessories

序号 Ref. No.	物料号 Part. No.	名称	Description	数量 Amt.
1	10004466	机头连接钩部件	Head Connecting Hook	2
2	10011041	机头连接钩座	Head Connecting Hook Socket	2
3	10003889	机头连接钩座钉	Head Connecting Hook Nail	4
4	10004400	上轮前罩壳	Front cover of upper wheel	1
5	10004460	前罩壳安装架	Fixing bracket of front cover	1
6		上轮后罩壳部件	Rear Belt Cover ASM	1
7	10004402	上轮后罩壳	Back cover of upper wheel	1
8	10004513	后罩壳盖部件	Components of back cover	1
9	10008323	后罩壳安装木螺钉	Wood screw of back cover fixing	2
10	10003083	木螺钉垫圈	Wood screw washer	2
11	10010842	前罩壳紧固螺钉	Fastening screw of upper cover	2
12	10011153	后罩壳支柱	Back cover pole	1
13	10010993	支柱螺钉	Pole screw	1
14	10012318	螺钉垫圈	Screw washer	1
16	10010994	螺丝刀(大)	Screw driver(L)	1
17	10010995	螺丝刀(中)	Screw driver(M)	1
18	10013185	螺丝刀(小)	Screw driver(S)	1
19	10010060	梭 芯	Shuttle	3
20	10004399	机 头 罩	Machine head cover	1
21	10004514	机头支柱	Machine head pole	1
22	10004455	油箱部件	Oil case components	1
标准型 Typical model				
15	10004898	机针	Maching needle	1包
小旋梭厚料 Heavy weight material (small rotating hook)				
15	10004868	机针	Maching needle	1包